

EARLY AUTUMN 2024

BUILDING ON EXCELLENCE

# ELEVATE OLATHE

*Comprehensive Plan*

## EXPRESS YOUR VISION FOR OLATHE'S FUTURE

You have a unique perspective on your community as residents and business owners. The City of Olathe wants this perspective as it continues efforts to update the Comprehensive Plan to prepare for the next 15 years of growth and development.

The plan will build upon the City's reputation for excellence, while continuing to elevate the services and infrastructure you receive.

Join us now and throughout the fall to share your ideas and input. Our Comprehensive Plan engager team

will be at upcoming events including Fourth Fridays, Johnson County Old Settlers, Farmers Markets, and Olathe Live!

Visit [OlatheKS.gov/ElevateOlathe](https://OlatheKS.gov/ElevateOlathe) to share your feedback, learn about upcoming events, and contribute to the virtual map.

Questions about the Elevate Olathe Comprehensive Plan may be directed to [PlanningContact@OlatheKS.gov](mailto:PlanningContact@OlatheKS.gov).

We look forward to the impact you will make on the Olathe community through your participation.

## INSIDE THIS ISSUE

- Mayor's Message 2
- Be Alert for New School Zone Times 3
- Get a Limited Edition Library Card 4
- Enjoy a Taste of Literacy 4
- Saving a Place for You 5
- Properly Dispose of Grill and Firepit Ashes 6
- Know When You Need a Construction Permit 7

## Watch City Council Meetings on Your Terms

See live streamed Olathe City Council meetings at 7 p.m. the first and third Tuesdays, at [OlatheKS.gov](https://OlatheKS.gov). Watch at your convenience within 24 hours of their conclusion at [OlatheKS.gov/OGN](https://OlatheKS.gov/OGN)

Trilogy Cultural Arts Centre performers return to Kidtopia at the Olathe Arts Festival in Downtown Olathe Sept. 27-28.



Visit [OlatheKS.gov](https://OlatheKS.gov) and click on **NEWS** for additional Olathe news.



## MAYOR'S MESSAGE

In an age when so much of our time may be spent in front of a screen, it's more important than ever to get up and move and connect with others for our health's sake. Technology certainly offers social support for some, but for others it only increases isolation and depression.\*

During my time on the City Council, we've added outstanding new library facilities, rental venues, the Olathe Community Center, the Heritage Center at Mahaffie, and enhanced activities at our parks and at Mahaffie Stagecoach Stop and Farm Historic Site. All contribute to our community's well-being by connecting people and solidifying a healthy sense of community.

The Olathe Public Library brings people of all ages and interests together through a wide range of programming, resources, and welcoming spaces. It's a hub for educational workshops, cultural celebrations, adult book discussions, and children's story times.

Nearly 300,000 people come through the doors of our beautiful Olathe Community Center each year. Some come for fitness classes, sports leagues or the pool. Others come for birthday parties, community meetings, and city celebrations. If you've never visited your Olathe Community Center, I strongly encourage you to take a tour.

Spending time at Mahaffie strengthens

## TOGETHER, WE STRENGTHEN OUR WELL-BEING



*The Makerspace at the Indian Creek Library is a collaborative environment for creativity and innovation, allowing community members to explore new skills and connect with other makers.*

an understanding of Olathe's rich history through hands-on activities for families. Youth can volunteer, visit with their class, or participate in one-of-a-kind events. Admission is free Thursday nights each June and July with a different weekly theme.

We strive to serve and connect people of all ages and abilities with our parks, trails, and aquatics. Sports leagues saw 6,230 signups in the past year, and there have been more than 25,000 visits to our outdoor pools as of July 1.

We're always looking for ways to better support our community's well-being. In 2024, 92 City events have been scheduled for Downtown Olathe. Additional day camp locations are providing more school-age children enriching places to go in the summer. We're hosting kids' birthday parties at the Beach at Lake Olathe and Black Bob Bay, and Book Cooks classes for preschoolers at the Olathe Community Center. We've added pickleball classes

for ages 5 to 95 and Miracle League basketball, bocce, soccer, and bowling programs.

Our goal is to make our recreation programs available to all residents. Those who need financial assistance may apply for recreation scholarships.

Scan to apply.



Olathe offers so many opportunities to boost our well-being. Visit your library. Attend a concert. Join a sports team. Volunteer. The doors are open in Olathe and we welcome you. Together, we strengthen our community's mental and physical health.

Be well,

John Bacon  
Mayor



*Kids Bash attendees enjoy Mad Science in Downtown Olathe.*

\*National Institutes of Health: [newsinhealth.nih.gov/2022/09/healthy-social-media-habits](https://www.newsinhealth.nih.gov/2022/09/healthy-social-media-habits)

## NEW SCHOOL ZONE SIGNS



**Olathe traffic crews have changed out approximately 155 school zone signs to reflect the new school start and end times beginning in the 2024-25 school year.**

- High schools and Prairie Learning Center: 7:40 a.m.-2:40 p.m.
- Middle schools and Heartland Early Childhood Center: 8:20 a.m.-3:20 p.m.
- Elementary schools and Harmony Early Childhood Center: 8:55 a.m.-3:55 p.m.

The Olathe Police Department reminds citizens to always be vigilant when driving by schools and obey school zone speed limits. The safety of students is always a top priority and the Police Department wants to ensure safety traveling to and from school.

## IMPORTANT CITY PHONE NUMBERS

Regular Business Hours: Monday - Friday, 8 a.m. - 5 p.m.

[OlatheKS.gov/Government/Facilities-Directory](https://www.olatheks.gov/Government/Facilities-Directory)

**EMERGENCY** .....911

**Emergency TDD/TTY Calls** .....911

**GENERAL INFORMATION**  
(TDD/Voice) .....971-8600

**CUSTOMER SERVICE**  
(Billing, Trash, Water & Sewer)  
100 E. Santa Fe St. ....971-9311

**FIRE ADMINISTRATION**  
(Non-Emergency)  
1225 S. Hamilton Circle .....971-7900

**OLATHE PUBLIC LIBRARY**  
**Indian Creek**  
16100 W. 135th St. ....971-6850

**Downtown**  
260 E. Santa Fe St. ....971-6850

**OLATHE PARKS & RECREATION**  
**/COMMUNITY CENTER (TDD/Voice)**  
1205 E. Kansas City Rd. ....971-8563

**POLICE DEPARTMENT**  
501 E. 56 Highway .....971-7500

**HUMAN RESOURCES**  
100 E. Santa Fe St. ....971-8735



Eliminating traffic fatalities and severe injuries for all road users is the goal of a City of Olathe Safety Action Plan now in development for all road users — drivers, walkers, bikers, and others. The plan will be developed with a safe system approach, using a holistic view of the road system and all road users. It not only considers transportation infrastructure and engineering experts but includes the community in developing safer streets.

The Olathe Safety Action Plan seeks to understand where and why crashes occur and prioritize improvements to reduce crashes. Ultimately, enhancements will shape streets where everyone feels safe walking, biking, riding, rolling, or driving in Olathe.

Help inform the Safety Action Plan and project priorities by sharing your areas of concern and opportunity for Olathe's streets, trails, and sidewalks. This will ultimately determine where funding should be applied.

**Scan the QR code to share comments and concerns.**

While there, take 10 minutes to complete the Olathe Safe Streets community feedback survey.

Check here for community events and project updates.



## OLATHE CITY COUNCIL

**John Bacon**  
Mayor  
913-971-8500  
(City office)  
JBacon@OlatheKS.gov

**Matthew Schoonover**  
At-Large  
913-971-8797  
MSchoonover@OlatheKS.gov

**Kevin Gilmore**  
At-Large  
913-768-8285  
KPGilmore@OlatheKS.gov

**Robyn Essex**  
Ward 1  
913-971-6368  
RREssex@OlatheKS.gov

**Dean Vakas**  
Ward 2  
913-971-8773  
DVakas@OlatheKS.gov

**LeEtta Felter**  
Ward 3  
913-971-6995  
LFelter@OlatheKS.gov

**Marge Vogt**  
Ward 4  
Mayor Pro Tem  
913-269-0625  
MVogt@OlatheKS.gov

# CELEBRATE NATIONAL LIBRARY CARD MONTH WITH LIMITED-EDITION LIBRARY CARDS

This September, celebrate National Library Card Month by getting one of two exclusive, limited-edition Olathe Public Library cards. These special designs are available for a limited time, each supporting unique aspects of our community and heritage.

## Deaf Awareness Month Card

The special edition card honors Deaf Awareness Month in partnership with the Kansas School for the Deaf. A unique design features "OPL" (Olathe Public Library) finger spelled in American Sign Language.

## Local History, Flora, and Fauna Card

This stunning card showcases a verbena flower alongside our state bird. The design celebrates our rich local history and the natural splendor of our region.

## How to Get Your Limited-Edition Card

Visit either library location this September and sign up for a new library card or renew your existing one to choose your favorite design. Supplies are limited, so don't miss out.

## Library Card Signup Outreach Events

Can't make it to the library?

Join us at one of our offsite card signup events:

### Wednesday, Sept. 4

Black Bob Park Farmers Market, 7:30 a.m.–12 p.m.

### Saturday, Sept. 7

Downtown Olathe Farmer's Market, 7:30 a.m.–12 p.m.

### Wednesday, Sept. 11

Downtown Olathe Sip and Shop, 5 p.m.–7 p.m.

### Saturday, Sept. 14

Olathe Community Center, 12 p.m.–2 p.m.

### Friday, Sept. 20

Olathe Community Center, 10 a.m.–12 p.m.



## FRIENDS OF THE LIBRARY BOOK SALE

Adult, teen and children's books, DVDs, CDs, and audiobooks sell for \$1 or less.

**Aug. 16: 9 a.m.–5 p.m.**

**Aug. 17: 10 a.m.–4 p.m.**

**Aug. 18: 1–4 p.m.**

**Book Sack Sale**

Purchase a sack for \$6 and fill it up with items.

Indian Creek Library  
16100 W. 135th St.



# A Taste of Literacy

Olathe Public Library Foundation

## LAURA MORIARTY

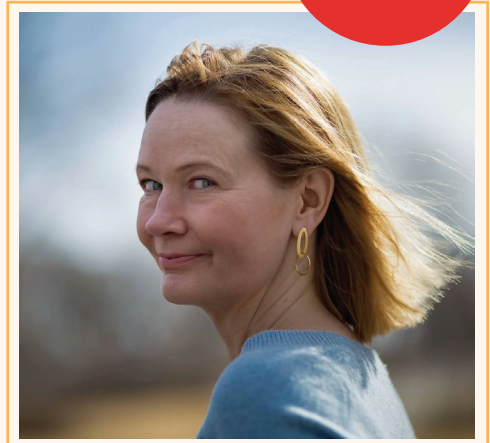
**Saturday, Sept. 14**

**6 p.m.**

**Indian Creek Library**

**Dinner will be catered by the Olathe North High School Culinary Arts Program.**

Individual tickets are \$75 with sponsorships available.



**Laura Moriarty**, the author of five novels including *The Chaperone*, *American Heart*, and *While I'm Falling*, earned a degree in social work before returning for her Master of Arts degree in creative writing at the University of Kansas. She is now a professor of creative writing at the University of Kansas and is working on her next novel.

Purchase tickets and sponsorships at [OlatheLibrary.org/ATasteofLiteracy](https://OlatheLibrary.org/ATasteofLiteracy)



*The Olathe Historic Preservation Board members were instrumental in the City of Olathe's decision to reuse and repurpose the building at 200 S. Kansas Ave. for commercial/retail use in Downtown Olathe. The building was constructed in the 1960s and originally served as a Phillips 66 station. Pictured at the building from left: Rick Babson, Ken Roberts, Lexi Selvig, Tom Kearney, Bob Courtney, and Lynn Gentry.*

## SAVING A PLACE FOR YOU: OLATHE'S HISTORIC PRESERVATION BOARD

The Olathe Historic Preservation Board plays a vital role in safeguarding the rich history and cultural heritage of our community. This dedicated group of volunteers works tirelessly to ensure that Olathe's historical landmarks, buildings, and sites are preserved for future generations.

Historic preservation is more than just maintaining old buildings; it's about keeping the stories and memories of our past alive. By protecting these physical reminders, we honor the people and events that shaped our community. Preservation efforts also enhance our city's character, attract tourism, and can even boost property values.

The Olathe Historic Preservation Board oversees a variety of activities, including the designation of historic landmarks, the review of renovation projects to ensure they meet preservation standards, and the promotion of heritage education and awareness. Their work ensures that our history is not lost to time and continues to be a vibrant part of our community's identity.

Did you know that historic preservation is a fundamental form of sustainability? By rehabilitating and repurposing existing structures, we reduce the need for new construction, which in turn minimizes waste and conserves resources. This approach supports green development by lowering the carbon footprint associated with demolition and new building materials. Preserving and updating historic buildings often involves making them more energy-efficient, which contributes to long-term environmental sustainability.

### **Community involvement vital to historic preservation success**

Whether through volunteering, attending public meetings, or simply taking an interest in local history, every resident can contribute to this important cause. Together, we can ensure that Olathe's unique heritage is preserved and cherished for years to come.

For more information on how you can get involved, visit [OlatheKS.gov/Preservation](https://OlatheKS.gov/Preservation)

# SAFELY DISPOSE OF GRILL AND FIREPIT ASHES

Each year, there are thousands of fires nationwide – and several in Olathe – caused by discarded ashes and coals in containers like plastic trash or yard waste bins. These ashes come from firepits, charcoal and pellet grills, fireplaces, and woodstoves. Ashes and coals can hold enough heat for several days to ignite a plastic bin, paper or plastic bag, or cardboard box.



This house fire was caused by the improper disposal of ashes.




## Discard ashes safely

1. Allow ashes to cool before disposing of them.
2. Place ashes in a tightly covered metal container and keep the container at least 10 feet away from anything that can burn (home, deck, shed, etc.).
3. Pour water on the ashes.
4. Never empty the ashes directly into a trash can.

Please call the Olathe Fire Department with any questions: 913-971-7900.

## TEMPORARY SIGNS

Permits are required for all businesses. Noncommercial signs, such as election signs, are exempt from permitting. All requirements are in Unified Development Ordinance 18.50.190.0 at [OlatheKS.gov/Planning](https://www.olatheks.gov/Planning)

-  One sign is allowed per street frontage or tenant space. Must be at least 10 feet from all property lines and cannot be placed in right-of-ways.
-  Freestanding Signs: Maximum 10 feet in height and 32 square feet sign face. Wall-Mounted: Maximum 10% of the wall area in which it is placed.
-  Maximum of four 30-day periods per year. No 30-day period can carry over from month to month.

Scan the QR code to apply or visit [OlatheKS.gov/Permits](https://www.olatheks.gov/Permits)

Include a site plan with labeled setbacks, sign dimensions, and design with the sign application.



## WAYS TO MANAGE LEAVES

Leaves that drift down to your lawn can be used to help maintain a healthy lawn and landscape.



Recycle leaves by:

- Mulch mowing leaves back into the lawn. This requires more frequent mowing, although it can be easier than raking and bagging. When done correctly, this provides an excellent source of organic matter for the lawn.
- Using chopped leaves as mulch for your garden. They can also be added around trees and shrubs to help retain moisture and control weeds.

Too many leaves? You can place them in compostable paper bags or an Olathe Yard Cart for collection. Or, drop them off free of charge at the Olathe Community Recycling Center, 1100 Hedge Lane. Leaves will be composted and will be available later for residents' use.

**Remember, it is illegal to blow or rake leaves into the street or storm drains.**

Visit [OlatheKS.gov/YardWaste](https://www.olatheks.gov/YardWaste) to learn more and purchase a Yard Cart.

## CONSTRUCTION PERMITS FOR YOUR NEXT PROJECT MADE EASY!



*Building Inspector Scott Stephens measures the height of handrails and guardrails on a final residential inspection.*

If you're planning a construction project – whether renovating an existing space, adding a deck, or building your dream home – don't forget to apply for a permit.

Remember, a permit may be required\* for projects at your primary residence, even if there is no general contractor. The City of Olathe's award-winning staff are here to help!

To ensure safety, quality, and meet community standards, permits are required for:

- New homes
- Decks
- Basement finishes
- Water heaters
- Furnaces and air conditioners
- Swimming pools
- And many more

\* Olathe Municipal Code Title 15

Visit [OlatheKS.gov/Permit](https://www.OlatheKS.gov/Permit) for more details. Permit applications can be made entirely online. Or, email questions to [BuildingCodesContact@OlatheKS.gov](mailto:BuildingCodesContact@OlatheKS.gov).

## WHAT'S BEING BUILT IN OLATHE

### Evergreen Community

Evergreen Community Senior Living is currently under construction southeast of Ridgeview Road and College Boulevard. The 183-unit community will include assisted living, hospice services, independent living apartments, and townhomes. The community will be relocating from the current location near Ridgeview and 119th Street. Planned amenities for residents include outdoor courtyards, walking paths, accessible swings, indoor activity areas, and chapel services. The new development is anticipated to open in early 2026.



Evergreen Community will maintain a partnership with Midland PACE, which will be constructed nearby southeast of Ambassador Street and College Boulevard. Midland Care Connection, Inc. will provide the Program of All-Inclusive Care for the Elderly (PACE), hospice, home health, meals on wheels, palliative care, and counseling services. The health care program assists individuals at risk of needing nursing care to stay in their own homes and community.

### Olathe Senior Villas

Olathe Senior Villas is under construction west of Parker Street and north of Dennis Avenue. The development includes 48 independent living units along with many planned amenities for residents, including: community gardens, walking trails, fitness center, outdoor picnic areas, and a community room. Kansas Housing awarded project funding to provide affordable units within the development.



# OlatheLINK

P.O. Box 768  
Olathe, Kansas 66051-0768  
913-971-8700

### OlatheConnect

Look up information or submit a service request 24/7.  
[OlatheKS.gov/OlatheConnect](https://OlatheKS.gov/OlatheConnect)

### Stay Informed

Visit [OlatheKS.gov](https://OlatheKS.gov) and sign up for Olathe news and updates by email or text messages.

PRSR STD  
U.S. POSTAGE  
PAID  
Permit No. 323  
Olathe, KS

CONNECT WITH US



App available  
on the App Store  
and Google Play

OLATHE  
TrashDay



**Friday, Sept. 27, 3-8 p.m.**  
**Saturday, Sept. 28, 10 a.m.-7 p.m.**

Join us in Downtown Olathe for live music and performances, 60 fine artists with original artwork available for purchase, and food & beverage vendors. The children's area, "Kidtopia," will be returning with several fun free activities!

[OlatheKS.gov/ArtsFestival](https://OlatheKS.gov/ArtsFestival)