

SUMMER 2024



Visitors enjoy Sip & Shop in Downtown Olathe the second Wednesday of the month through Oct. 9

## SANTA FE AND I-35 INTERCHANGE AREA IMPROVEMENTS MOVING FORWARD

Work is progressing on critical I-35 and Santa Fe area traffic improvements with land acquisition starting this year.

The improvements will enhance safety and mobility, and ease traffic congestion. Traffic flow and its management are top priorities for Olathe residents.

“For many residents, this project can’t come too soon,” says City Manager Michael Wilkes. “We’re fortunate that collaborating with our partner the Kansas Department of Transportation (KDOT) has provided significant funding to bring forth this important project.”

Improvements will occur on the Santa Fe corridor from Ridgeview Road to Mur-Len Road, which currently impacts east-west traffic flow times throughout

the city. A reconstructed I-35 and Santa Fe Interchange and auxiliary lanes on I-35, from Santa Fe to 119 Street, will help alleviate its congestion and traffic backups onto I-35. The current crash rate at the interchange is approximately six times the national average.

Improvements will include new bridges, pavement widening/reconstruction, roadway realignments/extensions, access control, signal installation, median construction, streetlights, sidewalks, and all other work necessary to complete the project.

Recently, the City secured \$159,277,738 in KDOT funding for the project. It is anticipated that construction will take three years.

## INSIDE THIS ISSUE

- Mayor’s Message 2

---

- Kickin’ It With The Cops 3

---

- Fourth Fridays Return to Downtown Olathe 4

---

- Join A Summer Reading Adventure 4

---

- New Parks Coming Soon 5

---

- Shop the Re-Use Store 6

---

- Be Water Wise - See Our Tips 7

---

### Santa Fe & I-35 Area Improvements Timeline

Land acquisition	2024-2025
Utility relocation	2025-2026
Construction begins	2027



**I-35 & Santa Fe Corridor**  
[OlatheKS.gov/SantaFe](http://OlatheKS.gov/SantaFe)

Visit [OlatheKS.gov](http://OlatheKS.gov) and click on **NEWS** for additional Olathe news.



## MAYOR'S MESSAGE

Planning for the future is probably the most important element in the success of any community. In fact, an old saying puts it this way: Where there is no vision, the people perish. The City of Olathe is beginning the important planning review of our Comprehensive Plan. The current Plan Olathe Comprehensive Plan, which guides Olathe's growth and development, was originally adopted in 2010. Since then, our community has experienced growth, changes in industries and population shifts, prompting the need for a review and update.

The updated Comprehensive Plan will provide a community-driven vision for development and redevelopment for the next 10 to 15 years, including key policy recommendations and actions. Its direction for critical infrastructure decisions will ensure the community is growing in an efficient and fiscally responsible manner.

The plan's guidance on land use, transportation, natural resources, and economic development are key elements, along with an embrace of Olathe's rich culture and heritage. Additionally, several community subareas have been selected for a more detailed approach with specific recommendations, including Downtown Olathe and the Santa Fe and Interstate 35 interchange area.

Our focus for a thriving Downtown Olathe not only continues with the Comprehensive Plan, but it's also

## REFRESHING OLATHE'S PLANNING VISION



*Downtown Olathe will be among several city subareas to receive specific planning recommendations in the updated Comprehensive Plan.*

supported by our development efforts and exciting community activities. In 2024, a record number of family-friendly events will happen downtown, many at the new Downtown Library and Johnson County Square. Visit [OlatheKS.gov/SpecialEvents](https://OlatheKS.gov/SpecialEvents) for details.

### Crafting the Community's Comprehensive Plan


A Comprehensive Plan Steering Committee, composed of elected officials, Planning Commissioners, community members and representatives, plus the Olathe Chamber of Commerce and Olathe Public Schools, will advise and provide direction. This is a significant time commitment, and we're grateful to all for their dedication.

It's important that this Comprehensive Plan reflects your preferences for Olathe. Please consider participating in community engagement opportunities

throughout the plan update at a visioning open house, stakeholder group meetings, and online. Look for City staff during future Olathe Live! events, Olathe Farmers Markets, Johnson County Old Settlers, Fourth Fridays, and other events this summer and fall. Updates will be provided on these events and other ways to stay involved at [OlatheKS.gov](https://OlatheKS.gov) and on our social media.

Building upon Olathe's solid foundation of excellent public services and setting new planning directions are activities we can all take part in. We look forward to your involvement and feedback to ensure Olathe remains a future-ready and thriving community for generations to come.

Have a fantastic summer!

  
John Bacon  
Mayor

### JOIN THE CITY OF OLATHE 2025 BUDGET DEVELOPMENT | KEY DATES

JUNE  
25

Budget Workshop 1  
5:30 p.m.  
Olathe Police Dept.  
Community Room  
501 E. 56 Highway

JUNE  
28

City Budget Team  
at Fourth Friday  
6-9 p.m.  
Downtown  
Olathe

JULY  
16

Budget Workshop 2  
7 p.m.  
Olathe City Hall  
100 E. Santa Fe

Take the survey to share how you'd like to learn about Olathe's budget!

AUGUST  
6

Budget Workshop 3  
7 p.m.  
Olathe City Hall  
100 E. Santa Fe

AUGUST  
27

Budget Public Hearing  
5:30 p.m.  
Olathe City Hall  
100 E. Santa Fe

SEPTEMBER  
3

Budget Adoption  
7 p.m.  
Olathe City Hall  
100 E. Santa Fe



Visit [OlatheKS.gov/Budget](https://OlatheKS.gov/Budget) for more information about the 2025 budget development.

# COME KICK IT WITH OLATHE POLICE THIS SUMMER

All events are free to the public.

## JUNE 27: 8 – 9:30 P.M.

### Mini Golf & Batting Cages at Black Bob Park

14570 W. 151st St. This event is only for middle school students.

## JULY 9: 10 – 11 A.M.

### Rainbow of the Heartland

307 N. Burch St.

## JULY 20: 9 – 10 A.M.

### Donuts in the Park – Frontier Park

15501 Indian Creek Pkwy.

## JULY 24: 10 – 11:30 A.M.

### Main Event – Olathe | Bowling

11950 N. Kansas City Rd.

## AUG. 8: 10 – 11:30 A.M.

### Shaved Ice at Two Trails Park

1000 N. Ridgeview Rd.



Follow us  
@olathepolice on



## IMPORTANT CITY PHONE NUMBERS

Regular Business Hours: Monday - Friday, 8 a.m. - 5 p.m.

[OlatheKS.gov/Government/Facilities-Directory](http://OlatheKS.gov/Government/Facilities-Directory)

**EMERGENCY** .....911

**Emergency TDD/TTY Calls** .....911

### GENERAL INFORMATION

(TDD/Voice) .....971-8600

### CUSTOMER SERVICE

(Billing, Trash, Water & Sewer)

100 E. Santa Fe St. ....971-9311

### FIRE ADMINISTRATION

(Non-Emergency)

1225 S. Hamilton Circle .....971-7900

### OLATHE PUBLIC LIBRARY

**Indian Creek**

16100 W. 135th St. ....971-6850

**Downtown**

260 E. Santa Fe St. ....971-6850

### OLATHE PARKS & RECREATION /COMMUNITY CENTER (TDD/Voice)

1205 E. Kansas City Rd. ....971-8563

### POLICE DEPARTMENT

501 E. 56 Highway .....971-7500

### HUMAN RESOURCES

100 E. Santa Fe St. ....971-8735

## OLATHE CITY COUNCIL

### John Bacon

Mayor

913-971-8500

(City office)

[jbacon@olatheks.gov](mailto:jbacon@olatheks.gov)

### Matthew Schoonover

At-Large

913-971-8797

[mschoonover@olatheks.gov](mailto:mschoonover@olatheks.gov)

### Kevin Gilmore

At-Large

913-768-8285

[kpgilmore@olatheks.gov](mailto:kpgilmore@olatheks.gov)

### Robyn Essex

Ward 1

913-971-6368

[rressex@olatheks.gov](mailto:rressex@olatheks.gov)

### Dean Vakas

Ward 2

913-971-8773

[dvakas@olatheks.gov](mailto:dvakas@olatheks.gov)

### LeEtta Felter

Ward 3

913-971-6995

[lfelter@olatheks.gov](mailto:lfelter@olatheks.gov)

### Marge Vogt

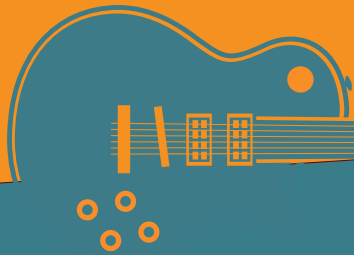
Ward 4

Mayor Pro Tem

913-269-0625

[mvogt@olatheks.gov](mailto:mvogt@olatheks.gov)

FOOD TRUCKS • BEER GARDEN • LIVE MUSIC • YARD GAMES • KIDS ACTIVITIES



# FOURTH FRIDAYS IN DOWNTOWN OLATHE



6 - 9 P.M.

[fourthfridays.olathe.org](http://fourthfridays.olathe.org)

PRESENTED BY HONDA  
AND SUBARU OF OLATHE

**JUNE 28**  
**THE STOLEN WINNEBAGOS**

**AUGUST 23**  
**JAM: JACKSON AND MARS**



## VISIT OTHER CITY POOLS DURING COMMUNITY CENTER POOL MAINTENANCE

The Olathe Community Center indoor pool is temporarily closed for maintenance through Aug. 11. In the meantime, community center members can use their Splash Passes at any City of Olathe outdoor aquatics facility:

- The Beach at Lake Olathe, 445 S. Ward Cliff Dr.
- Black Bob Bay, 14570 W. 151 St.
- Frontier Trail Pool, 15909 W. 127 St.
- Mill Creek Pool, 320 E. Poplar St.
- Oregon Trail Pool, 1750 W. Dennis Ave.

Olathe Community Center members also have access to extended morning hours at Mill Creek Pool, where morning programs normally at the community center, are offered.

Questions? Call 913-971-8563.



# ADVENTURE — BEGINS AT — YOUR LIBRARY™

There's Still Time to Join

**2024 Summer Reading  
Through Aug. 4**



[OlatheLibrary.org/SummerReading](http://OlatheLibrary.org/SummerReading)



*Future site of Pioneer Park*

# New Parks Boost Olathe's Quality of Life

## **PIONEER PARK**

More residents will soon be able to enjoy a neighborhood park with a natural area, walking trail, fishing pond, and shelter. Construction begins later this year on Pioneer Park, a 16.7-acre site located one quarter mile west of Woodland Road adjoining College Boulevard. The property will also have new Fire Station 9 on its southwest corner.

The Hoff Family, who are longtime residents here, donated the property to the City of Olathe. The Hoff's farmed in the area since before the Civil War, making them one of the oldest Kansas families on record to work on the land. In 2010, the Hoff family opened Stone Pillar Vineyard and Winery so they could continue to keep the farm productive, even as the neighboring land was being developed.

"The City is incredibly grateful to the Hoff family for donating this land that has been such an integral part of Olathe's rich history. We're excited to develop the land into Pioneer Park that will be enjoyed by families for generations to come," said Mike Sirna, City of Olathe Quality of Life director.

Pioneer Park will be Olathe's first park that reduces the carbon footprint using solar powered streetlights and shelter lights. In addition to the park's walkability for area residents, a small parking area will be accessed from adjoining neighborhoods.

## **LOULA PARK**

Construction for improvements at Loula Park, 1300 W. Loula St., is now underway. This four-acre park will offer a small children's playground, shelter, drinking fountain, and landscaping. It will also have a bike repair station equipped with tools. A path connects Loula Park to the Rolling Ridge Trail.



*Children's play equipment at Loula Park (area still in construction)*

## NEIGHBORHOOD LEADERSHIP SUMMIT

### Empowering Neighbors & Strengthening Communities



The City of Olathe partnered with the City of Overland Park to host its first-ever Neighborhood Leadership Summit on April 24, 2024, at the Olathe Community Center. The Summit aimed to empower community leaders with essential skills and knowledge for effective neighborhood organization. LaMonica Upton, MSOD, senior program manager for Neighborhood

Leadership at the UMKC Center for Neighborhoods, served as the keynote speaker, emphasizing the importance of community leadership through her extensive civic and social organizational roles over the years.

The inaugural event featured various workshops and sessions led by professional leaders, covering topics such as effective dialogue and conflict resolution, strategies for volunteer recruitment and retention, a legal clinic for homeowner's associations, and guidance on neighborhood advocacy.

More than 75 attending from both cities had the opportunity to network with neighbors, community leaders, several partner organizations, and City departments dedicated to improving neighborhoods every day.

The City of Olathe plans to continue the summit in the future. If you or your neighborhood would be interested in future educational, informational, or networking opportunities please be sure to register your neighborhood with the City's Healthy Neighborhoods Program, or check to see if your neighborhood is already registered!

[OlatheKS.gov/HealthyNeighborhoods](https://OlatheKS.gov/HealthyNeighborhoods)

## SAY NO TO BAGGING GRASS CLIPPINGS

With the average lawn generating about 1,500 pounds of grass clippings a season, consider using clippings to return nutrients to your lawn, save mowing time, and gain benefits for the landscape.

- Instead of bagging, let clippings fall on the lawn to return up to 25% of the nitrogen your lawn needs.
- Reduce mowing time by a third.
- Use clippings in vegetable gardens to help conserve moisture and suppress weeds.

Keeping the mower blade sharp and removing only a third of the grass leaf is key to letting clippings remain on the lawn.

For more tips, visit [OlatheKS.gov/YardWaste](https://OlatheKS.gov/YardWaste).

If you must collect clippings for City of Olathe pickup, consider purchasing a 95-gallon yard cart. They hold the equivalent of six yard waste bags. They are available for \$50 and can be purchased through your online utilities account, under "manage services" or call 913-971-9311.



## SHOP THE RE-USE STORE



The City of Olathe Re-Use Store may have products you're looking for at no cost. White, tan, and gray house paint, household cleaners, fertilizers, and many other products turned in at HHW drop-offs are often available. Last year, the Olathe facility collected more materials than any other facility in Kansas.

"Olathe residents are top-notch for bringing items to the HHW facility," says Grant Tarr, Olathe HHW supervisor.

Tarr reminds us that a vast variety of used or unused household items can be brought to Olathe's HHW facility: all types of light bulbs, pesticides, varnishes, and automotive products.

"It's especially important to bring in batteries. This spring one of our trash collection trucks caught fire from a lithium battery in its trash load," says Tarr.

HHW drop-off is available on the second Saturday each month, 8 a.m. to 2 p.m., or by appointment.

Learn more at [OlatheKS.gov/HHW](https://OlatheKS.gov/HHW).

# BE WATER WISE

BY ADOPTING A FEW SIMPLE WATERING TIPS, YOU CAN EASILY REDUCE YOUR OUTDOOR WATER!



Set your motor blade higher and allow grass clippings to decompose on the lawn, returning additional water and valuable nutrients to the soil.



Mulch conserves moisture and maintains cool soil, while compost can add in helpful nutrients at the same time. Interested in free compost or mulch? Visit our Olathe Community Recycling Center!



Avoid watering on windy days and water in the morning to avoid excess evaporation.



A properly programmed water controller helps to minimize water usage.



Plant drought-tolerant plants native to Olathe, as they will grow well with the amount of rain Olathe receives.



Ensure sprinkler heads aren't wasting water by spraying paved or unwanted areas.



Do a periodic check of your waterline pipes and your sprinkler system pipes to ensure they are in good condition.



Water collected in rain barrels can be used later to water plants.\*



\* Scan our QR code to check out a Cost Share Program that can help in purchasing a rain barrel.



## TRACK YOUR WATER USAGE

Having an online City of Olathe utility account lets you monitor your water usage. See your water usage monthly, daily, and hourly. Register at [BillPay.OlatheKS.org](http://BillPay.OlatheKS.org).

In addition:

- Sign up for e-bill and auto pay to save on postage and avoid late fees.
- Decrease paper coming in your mailbox and printing costs.
- Check your account balance.
- Schedule a bulk pick-up.



**OlatheConnect**

Look up information or submit a service request 24/7.  
[OlatheKS.gov/OlatheConnect](http://OlatheKS.gov/OlatheConnect)

**Stay Informed**

Visit [OlatheKS.gov](http://OlatheKS.gov) and sign up for Olathe news and updates by email or text messages.

PRSR STD  
 U.S. POSTAGE  
 PAID  
 Permit No. 323  
 Olathe, KS

CONNECT WITH US



App available on the App Store and Google Play



OLATHE

# RED WHITE & BLUE

**\*\* BEACH FEST**  
 JULY 4 • NOON • LAKE OLATHE

**\$30**  
 Includes sack lunch, Aqua Park use, boat rentals, open swim

**\*\* July 4th FIREWORKS**

JULY 4 • 9:45 PM • COLLEGE BOULEVARD ACTIVITY CENTER

**FREE**

**\*\* Mahaffies' INDEPENDENCE DAY CELEBRATION**

JULY 6 • 10AM • MAHAFFIE STAGECOACH STOP AND FARM

**\$9 Per Adult  
 \$7 Per Child**  
 (Ages 5-11)  
 \$2 Off For Olathe Residents  
 Free For Mahaffie Members



**\*\* Fireworks 1860s STYLE!**

JULY 11 • 6PM • MAHAFFIE STAGECOACH STOP AND FARM

**FREE**