

# 119<sup>TH</sup> & WOODLAND CORRIDOR

## WHY CLOSE THIS RAILROAD CROSSING?

- The City of Olathe (City) was awarded a \$17.9M grant from the Federal Railroad Administration (FRA) that will provide a reliable, consistent, safe, and guaranteed train-free route for north/south travel while improving east/west traffic flow in Olathe. In order for the City to accept the FRA funding, the City would need to agree to close the Woodland Road crossing.
- Eliminating an at-grade crossing at Woodland Road and adding a grade-separated crossing at 119th will improve safety.
- The at-grade crossing is blocked by an average of 78 trains per day. Its closure will decrease traffic wait times.
- Accepting the federal funding and closing the Woodland Road crossing will reduce the burden of local dollars on the 119<sup>th</sup> Street project and allow the City to fund other projects, such as the new fire station along College Blvd.

## WILL THIS AFFECT EMERGENCY RESPONSE TIMES?

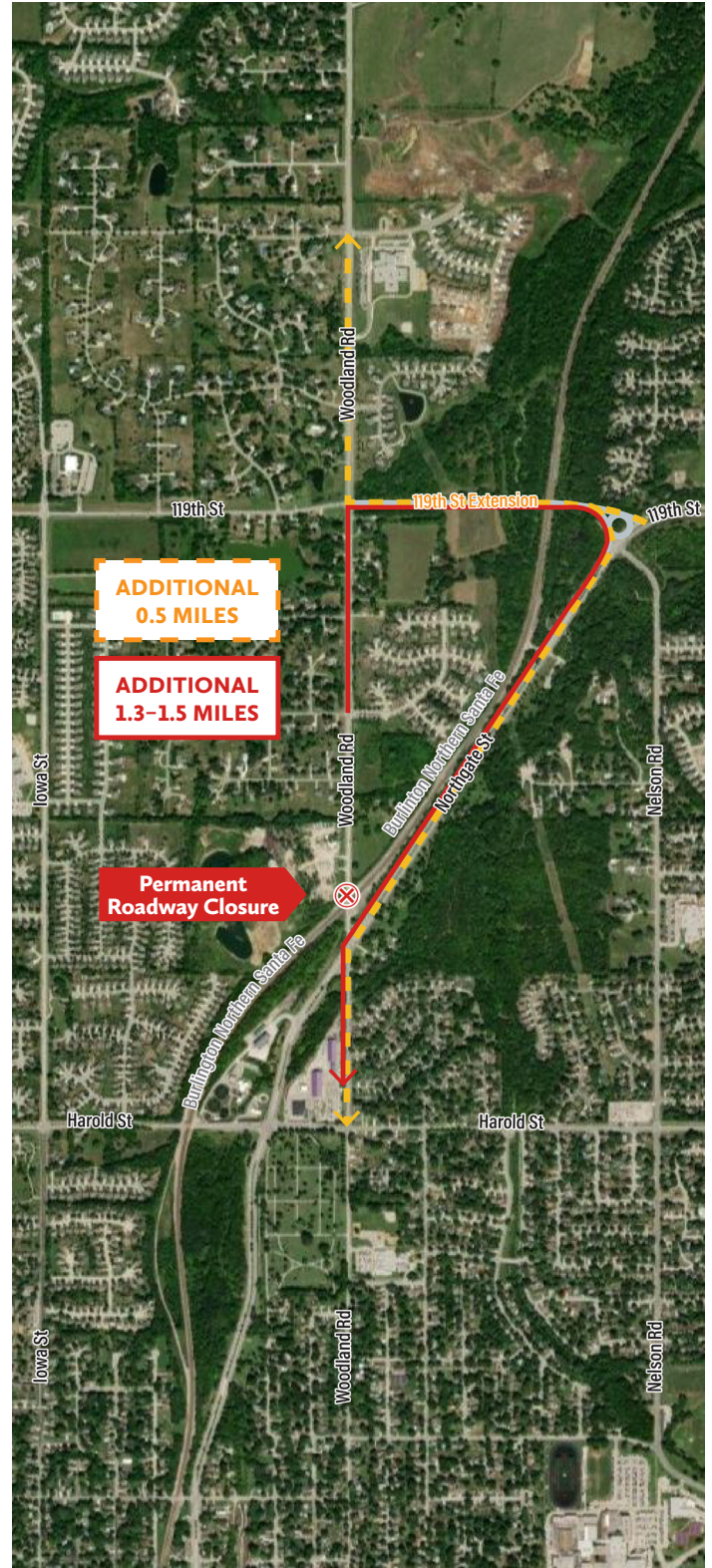
Both City Fire and Police Departments support this closure and believe there will be no long term impacts to emergency vehicle response times. For those who live and work on the west side of Olathe, the project will reduce response times. A new fire station near College and Woodland, tentatively planned to open in 2025, will be dedicated to serving the area and will not be impacted by the Woodland closure.

## HOW WILL THIS AFFECT MY TRAVEL ROUTES?

- Thru traffic on Woodland Road will have an additional 0.5 miles of travel (about 40 seconds of travel time).
- Local Woodland traffic (south of 119<sup>th</sup>) will have an additional 1.3-1.5 miles of travel (about 2 minutes of travel time).
- New pedestrian connectivity distances to the Gary L. Haller trailhead on Northgate are comparable.

## WHAT IS THE TIMELINE FOR THIS CLOSURE?

The timeline for this closure is reliant on the FRA and NEPA permitting processes. The crossing would not be closed until after the 119<sup>th</sup> Street extension opens to traffic, which is tentatively anticipated in late 2026. The City will continue to post project and schedule updates to the project website (scan the QR code below) as they are available.



## CONTACT US:

Neil Meredith, Senior Project Manager  
NRMeredith@OlatheKS.org | 913.971.9075  
[www.olatheks.org/119extension](http://www.olatheks.org/119extension)

