



119th Street, Woodland to Northgate

Federal Railroad Administration
(FRA) Railroad Crossing
Elimination Program

Nate Baldwin, City Engineer

June 20, 2023



Project Background/Need

- ▶ Project is listed as High priority in the Transportation Master Plan
- ▶ Missing link of a major/key arterial
 - ▶ Key connection from I-35 to K-7
- ▶ Improve traffic flow for northern Olathe
- ▶ Provide an above grade crossing at the BNSF Railroad
- ▶ Reduce congestion on adjacent arterials

ID	Segment	Description	Mobility	Safety	Rating	Priority
Inside Olathe						
15	Santa Fe, Lindenwood to Black Bob	6 lane	●	●	■	High
22	K-7 Hwy, Santa Fe to Old 56 Hwy	Add turn lanes; modify access	●	●	■	High
23	Lone Elm Rd, Old 56 Hwy to 151st	4 lane	●	○	■	High
25	Quivira Rd, 143rd to 151st	1/2 arterial	●	○	■	High
29	Santa Fe St, Ridgeview to Lindenwood	Intchg Reconfig	●	○	■	High
33	119th St, Woodland to Nelson	New 4 lane road	●	●	■	High
31	119th St, Renner to NB I-35 Ramps	Intchg Reconfig	●	●	■	High
2	Black Bob Rd, 159th to 167th	4 lane	●	○	■	Med
7	Harold St, Ridgeview to Kansas City Rd	4 lane	●	○	■	Med





Federal Railroad Administration (FRA) Railroad Crossing Elimination Program



- ▶ Provides funding for highway-rail or pathway-rail grade crossing improvement projects that focus on improving safety and mobility of people and goods
- ▶ Authorized in the Bipartisan Infrastructure Law
- ▶ Eligible projects include grade separation or closure



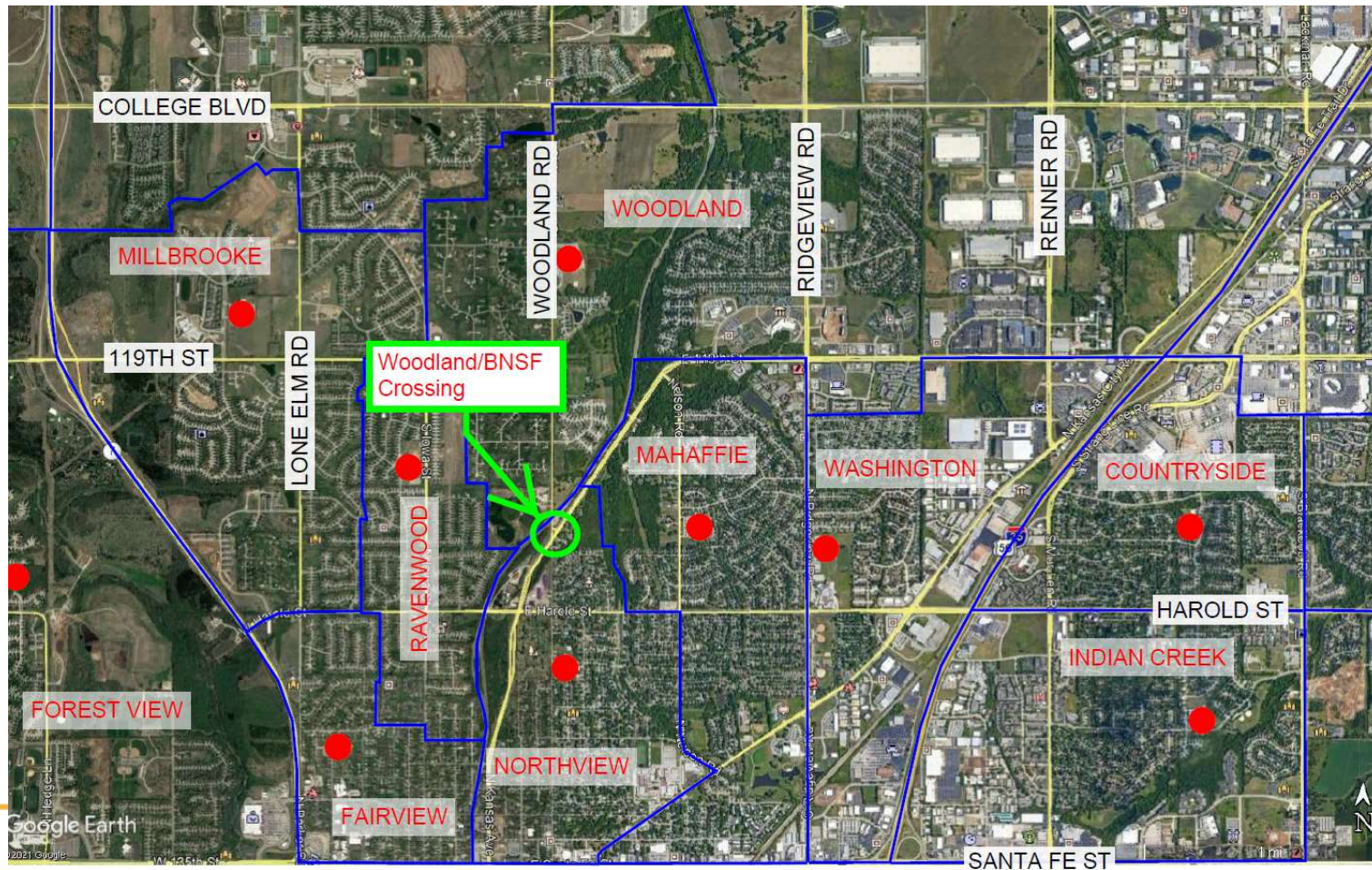
Project Benefits

- ▶ Safety
- ▶ Improves mobility
- ▶ Less air pollution
- ▶ Noise reduction
- ▶ Improves response times for emergency services
- ▶ Improves access to communities
- ▶ Pedestrian connectivity
- ▶ Provides economic benefit



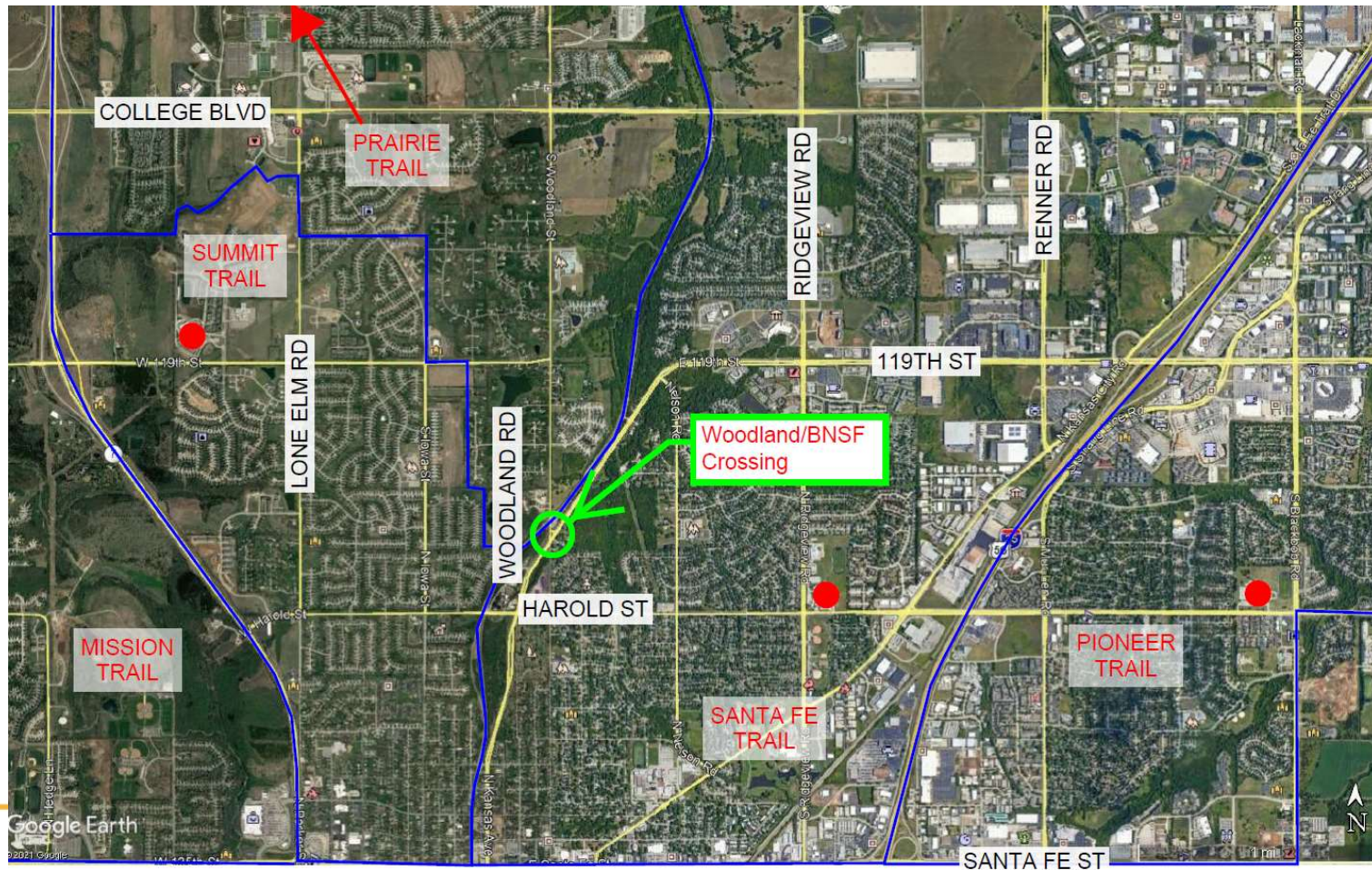


Elementary School Attendance Boundaries





Middle School Attendance Boundaries





High School Attendance Boundaries



Travel Impact





Grant Details

- ▶ \$17,987,495 FRA grant
- ▶ \$2,762,500 in additional project costs associated with grant
- ▶ Anticipate starting construction in 2024

