



**Street Maintenance Sales Tax
Finance Oversight Committee
2019 Annual Report**





City of Olathe

2019 Annual Report



Street Maintenance Sales Tax Finance Oversight Committee

Background

On November 12, 2013, the citizens of Olathe approved a 10-year, 3/8 cent Street Maintenance Sales Tax, which the City began collecting on April 1, 2014. The purpose of the sales tax revenue is to finance the cost of repairing, rebuilding, rehabilitating, upgrading, and improving streets in the City of Olathe.

Introduction

On February 18, 2014 the City Council enacted Resolution No. 14-1020 that adopted the charter creating the Street Maintenance Sales Tax Finance Oversight Committee. The Street Maintenance Sales Tax (SMST) Finance Oversight Committee is an advisory body tasked with the annual review of the 3/8 cent sales tax-related revenues and expenditures during its term. The Committee shall consist of seven members, all residents of the City of Olathe, appointed by the City Council. Generally, terms will be limited to four, consecutive two-year terms for a total of eight consecutive years. The Committee's specific duties are as follows:

- Annually review SMST income and expenditure to ensure the SMST revenues were expended consistently with the voter-approved street maintenance sales tax referendum.
- Annually, prepare an independent report to the City Council regarding the revenue and expenditures of the Street Maintenance Sales Tax.

The Committee's function is strictly that of oversight. It should be noted that it is not within the purview of the Committee to make decisions or recommendations on the use of SMST funds, direct staff, or define the scope of a project. These responsibilities remain under the authority of the City Council, City Manager, and professional staff.

Summary of 2019 SMST Revenues and Expenditures

In presenting this annual SMST report on the revenues and expenditures, the Committee undertook a review of documentation provided by the Director of Resource Management, Public Works Deputy Director, and Project Manager. The 2019 SMST fell slightly below the 2018 revenues (2.8%). To sustain a financially sound fund, actual expenditures were reduced from the original budget by 13.5%.

2019 Street Preservation Program Revenues & Expenditures Detail

AUTHORIZED SOURCES OF FUNDS SUMMARY	CIP CASH	SMST	Bonds	Grants	Street Excise	Other	TOTAL
Capital Improvement Cash	\$3,293,583.25						\$3,293,583.25
Overland Park						\$170,488.38	\$170,488.38
Bridge Rehab						\$310,450.00	\$310,450.00
Street Preservation						\$542,289.74	\$542,289.74
Stormwater						\$178,094.53	\$178,094.53
Street Maintenance Sales Tax		\$11,031,000.00					\$11,031,000.00
General Obligation Bonds			\$1,000,000.00				\$1,000,000.00
Total Sources	\$3,293,583.25	\$11,031,000.00	\$1,000,000.00	\$0.00	\$0.00	\$1,201,322.65	\$16,525,905.90

ACTUAL ALLOCATION OF FUNDS BY PROJECT								TOTAL
3-P-000-19	2019 Program							\$0.00
3-P-001-19								\$0.00
3-P-002-19	2019 151st Arterial Mill & Overlay (Ridgeview to OMC)	1,161,737.00	1,822,000.00			488,544.53		\$3,472,281.53
3-P-003-19	Lone Elm Rd Arterial Mill & Overlay	286,200.58	1,254,000.00					\$1,540,200.58
3-P-004-19	151st ST Arterial Mill & Overlay (Pflumm Rd to Quivira)	549,544.00	100,000.00			\$170,488.38		\$820,032.38
3-P-005-19	Santa Fe St Arterial Mill & Overlay	584,256.46	1,146,000.00			47,840.64		\$1,778,097.10
3-P-006-19	Local and Collector Mill & Overlay	168,624.35	2,402,000.00	\$1,000,000.00				\$3,570,624.35
3-P-007-19	MAQS Micro Surface Project	81,774.28	1,338,000.00			494,449.10		\$1,914,223.38
3-P-008-19	Heatherstone & Bradford Falls Mill & Overlay	24,560.31	2,570,000.00					\$2,594,560.31
3-P-009-19	Street Maintenance Curb Replacement	4,658.11	239,000.00					\$243,658.11
3-P-010-19	Street Maintenance Crack Sealing	7,056.16	160,000.00					\$167,056.16
3-P-001-20	Old 56 highway design	166,490.00						\$166,490.00
3-P-002-20	127th Street Arterial Mill & Overlay	72,000.00						\$72,000.00
3-P-003-20	Cedar Creek Parkway Arterial Mill & Overlay	99,682.00						\$99,682.00
3-P-004-20	Ridgeview Road Arterial Mill & Overlay	87,000.00						\$87,000.00
TOTAL ALLOCATION		\$3,293,583.25	\$11,031,000.00	\$1,000,000.00	\$0.00	\$0.00	\$1,201,322.65	\$16,525,905.90

2019 SMST Fund Balance Summary



STREET MAINTENANCE SALES TAX FUND BALANCE SUMMARY

	2014 Actual	2015 Actual	2016 Actual	2017 Actual	2018 Actual	2019 Actual*
Beginning Fund Balance	\$0	\$2,563,642	\$3,452,256	\$2,695,484	\$2,149,690	\$783,874
Revenue:						
Sales Tax	\$6,736,937	\$9,068,620	\$11,545,236	\$11,510,779	\$11,632,788	\$11,302,111
Interest Income	\$7,160	\$25,392	\$47,992	\$116,403	\$128,396	\$158,775
Transfer Revenue	\$669,545	\$1,209,550	\$0	\$0	\$0	\$0
Total Revenue	\$7,413,642	\$10,303,562	\$11,593,228	\$11,627,182	\$11,761,184	\$11,460,886
Funds Available	\$7,413,642	\$12,867,204	\$15,045,484	\$14,322,666	\$13,910,874	\$12,244,760
Expenditures:						
Transfer to Projects	\$4,850,000	\$9,414,948	\$12,350,000	\$12,172,976	\$13,127,000	\$11,031,000
Ending Fund Balance	\$2,563,642	\$3,452,256	\$2,695,484	\$2,149,690	\$783,874	\$1,213,760

*Unaudited

Conclusion

The Committee has concluded that:

- The revenue from SMST is being appropriately sequestered and routinely tracked, reported, and monitored.
- The expenditures of SMST funds were utilized in a manner consistent with the referendum passed by the Olathe voters.

- The City's funding of the Street Preservation Program is proceeding in a manner consistent with the commitments made to the voters of Olathe.

Further detailed information about the SMST Finance Oversight Committee's proceedings and the projects in the 2019 Street Preservation Program may be found in the appendix of this report. This report has been researched, assembled and presented in a manner the committee believes is consistent with the stated objectives of Resolution 14-1020.

In accordance with the directives of Resolution 14-1020, the 2019 Annual Report of the Street Maintenance Sales Tax Finance Oversight Committee is respectfully submitted:

Ms Anne Oswald, Chairperson

The Members of the SMST Finance Oversight Committee

Ms Carrie Rezac, Vice Chair

Mr Tom Grady

Mr Steve Smith

Mr Doug Svatos

Ms Becky Feller

Mr Gregg Herbert

City of Olathe
2019 Annual Report
Street Maintenance Sales Tax Finance Oversight Committee

Appendix

- I. SMST Finance Oversight Committee Activities

- II. Project Information
 - a. 151st Arterial Mill & Overlay (Ridgeview to OMC)
 - b. Lone Elm Rd Arterial Mill & Overlay
 - c. 151st Street Arterial Mill & Overlay (Pflumm Rd to Quivira)
 - d. Santa Fe Arterial Mill & Overlay
 - e. Local & Collector Mill & Overlay
 - f. MAQS Micro Surface Projects
 - g. Heatherstone & Bradford Falls Mill & Overlay
 - h. Street Maintenance Curb Replacement Projects
 - i. Street Maintenance Crack Sealing Projects
 - j. Design Old 56 Highway (2020 project)
 - k. Design 127th Street Arterial Mill & Overlay (2020 project)
 - l. Design Cedar Creek Parkway Arterial Mill & Overlay (2020 project)
 - m. Design Ridgeview Road Arterial Mill & Overlay (2020 project)
 - n. Map of 2019 projects

- III. Resolution No. 19-1007 authorizing the 2019 Street Preservation Program

- IV. Definitions of Street Preservation Project Categories

STREET MAINTENANCE SALES TAX
FINANCE OVERSIGHT COMMITTEE
ACTIVITIES

2019:

- ✓ March 5, 2019 Council reappoints Steve Smith and Tom Grady for their third 2-year consecutive term and upon completing an unexpired term Rebecca Feller was appointed to her first 2-year term.

- ✓ May 2, 2019 Committee reviewed the 2018 financial information and the draft 2018 SMST Finance Oversight Committee's annual report. Received presentation by staff on the 2019 Street Preservation Program. Members in attendance: Anne Oswald, Carrie Rezac, Tom Grady, Steve Smith, Becky Feller, and Gregg Herbert (Doug Svatos was absent). Also in attendance were staff members Director of Resource Management Dianna Wright; Deputy Public Works Director Beth Wright; Project Manager Jeff Beal; and Assistant City Clerk Brenda Long.

- ✓ June 4, 2019 Committee Chair Anne Oswald presented the 2018 Annual Financial Report to the City Council.

“151st Street Arterial Mill and Overlay Project, Ridgeview Road to Olathe Medical Center Access Road”

Project Number: 3-P-002-19	
Project: 151st Street Arterial Mill and Overlay	<p>Project Description: The project included asphalt base repair, 3.5” depth concrete milling and superpave asphalt overlay with a hybrid fiberglass paving mat to reduce future concrete joint reflection , median turn lane modifications, replacement of concrete bridge approaches, polymer modified bridge deck sealing, curb and sidewalk replacements, pavement markings, traffic signal detection, traffic signal improvements at Brougham, and stormwater rehabilitation to existing curb inlets and pipe crossings.</p> <p>Design process Revenues and Expenditures funded from 2018 Street Preservation and reported in 2018 - \$240,000.</p>
Lane Miles: 5.8	
Project Status: Complete	

Revenue Source(s)	Amount	% of Project	Expenditures	Amount	% of Project
CIP Cash	\$1,161,737.00	33.45%	Design/Engineering	\$224,258.34	6.46%
General Obligation Bonds			Acquisition		
CARS Program			Construction	\$3,198,957.17	92.13%
Street Maintenance Sales Tax	\$1,822,000.00	52.47%	Project Management - Inspection	\$33,198.62	0.95%
Storm Water Funds	\$178,094.53	5.13%	Utilities		
Other Revenue: Bridge Rehab	\$310.450.00	8.95%	Other: Testing, Publications, Streetlight Materials	\$15,867.40	0.46%
Total Revenues	\$3,472,281.53	100%	Total Expenditures	\$3,472,281.53	100%

Before Photo



After Photo



“Lone Elm Road Arterial Mill and Overlay Project”

Project Number: 3-P-003-19 Project: Lone Elm Road Arterial Mill and Overlay Project (119 th Street to the North End) Design Consultant: BHC Rhodes Lane Miles: 3.5 Project Status: Complete	Project Description: The project completed from 119 th Street to the north end of street (north of College Blvd) included asphalt base repair, 2" depth milling and superpave asphalt overlay, ADA ramps, curb and sidewalk replacements, installation of 8' concrete shared use path, pavement markings and traffic signal detection. Improvements were also made to Kansas City Road as part of this construction contract. Improvements included the removal of the existing street pavers and installation of an asphalt surface between Ridgeview Rd. and Mahaffie St., near the Mahaffie Stagecoach Stop & Farm Historic Site. Design Revenues and Expenditures funded from 2018 Street Preservation and reported in 2018 - \$96,000.00
--	--

Revenue Source(s)	Amount	% of Project		Expenditures	Amount	% of Project
CIP Cash	\$286,200.58	18.58%		Design/Engineering	\$76,567.85	4.97%
General Obligation Bonds				Acquisition		
CARS Program				Construction	\$1,422,665.15	92.37%
Street Maintenance Sales Tax	\$1,254,000.00	81.42%		Project Management - Inspection	\$30,902.08	2.01%
Storm Water Funds				Utilities:		
Other Revenue				Other: Testing, Gate Lock & Publications	\$10,065.50	0.65%
Total Revenues	\$1,540,200.58	100%		Total Expenditures	\$1,540,200.58	100%

Before Photo

After Photo



“151st Street Arterial Mill and Overlay Project”

Project Number: 3-P-004-19	
Project: 151 st Street Arterial Mill and Overlay Project (Pflumm Road to Quivira Road)	Project Description: This project from Pflumm Road to Quivira Road included asphalt base repair, 2" depth milling and superpave asphalt overlay, ADA ramps, curb and sidewalk replacements, pavement markings and traffic signal detection. The City of Overland Park through an inter-local agreement reimbursed the City of Olathe for the portions of this project which are within the Overland Park city limits.
Design Consultant: BHC Rhodes	
Lane Miles: 4.0	
Project Status: Complete	Design Revenues and Expenditures funded from 2018 Street Preservation and reported in 2018 - \$73,000.00

Revenue Source(s)	Amount	% of Project		Expenditures	Amount	% of Project
CIP Cash	\$549,544.00	67.01%		Design/Engineering	\$59,198.37	7.22%
General Obligation Bonds				Acquisition		
CARS Program				Construction	\$730,105.01	89.03%
Street Maintenance Sales Tax	\$100,000.00	12.19%		Project Management - Inspection	\$27,316.50	3.33%
Storm Water Funds				Utilities:		
Other Revenue: Overland Park Cost Share Reimbursement	\$170,488.38	20.80%		Other: Testing & Publications	\$3,412.50	0.42%
Total Revenues	\$820,032.38	100%		Total Expenditures	\$820,032.38	100%

Before Photo



After Photo



“Santa Fe Street Arterial Mill and Overlay Project”

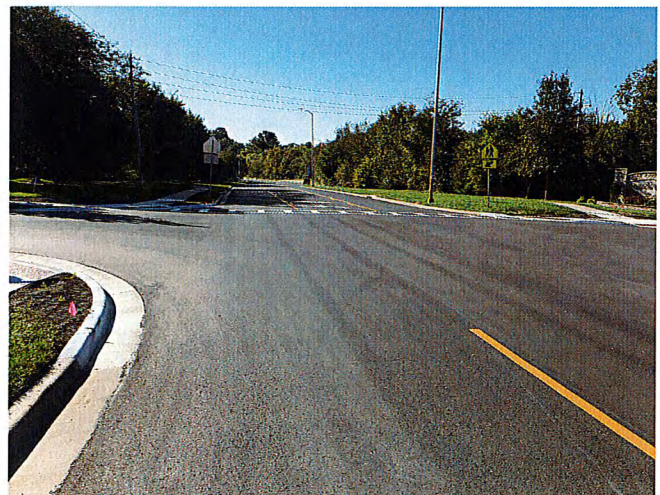
Project Number: 3-P-005-19 Project: Santa Fe Street Arterial Mill and Overlay Project Lane Miles: 8.5 Project Status: Complete	Project Description: The project included Santa Fe from Hedge Lane west to the Olathe city limit near lake Olathe, 127 th Street from Hedge Lane to Lakeshore Drive and Hedge Lane from Santa Fe to Dennis. The project completed a 2” depth mill and asphalt overlay, spot replacement of concrete curb and sidewalk, installation of ADA sidewalk ramps, removal and reconstruction of two retaining walls at Janell Drive, and replacement of pavement markings including additional striping added for bike lanes on SantaFe. Design Revenues and Expenditures funded from 2018 Street Preservation and reported in 2018 - \$200,000.00
---	---

Revenue Source(s)	Amount	% of Project		Expenditures	Amount	% of Project
CIP Cash	\$584,256.46	32.86%		Design/Engineering	\$162,143.99	9.12%
General Obligation Bonds				Acquisition		
CARS Program				Construction	\$1,574,767.17	88.56%
Street Maintenance Sales Tax	\$1,146,000.00	64.45%		Project Management - Inspection	\$33,199.94	1.87%
Storm Water Funds				Utilities:		
Other Revenue: Street Preservation Cash	\$47,840.64	2.69%		Other: Testing & Publication	\$7,986.00	0.45%
Total Revenues	\$1,778,097.10	100%		Total Expenditures	\$1,778,097.10	100%

Before Photo



After Photo



“2019 Local and Collector Street Mill and Overlay Project”

Project Number: 3-P-006-19	
Project: 2019 Local and Collector Street Mill and Overlay Project	Project Description: The project provided a 2” depth mill and asphalt overlay, full depth base repair, spot replacement of concrete curb and sidewalk, installation of ADA sidewalk ramps, LED streetlight fixture upgrades and replacement of pavement markings on forty-one (41) local and collector streets in the Sheridan Bridge, Peppermill and Olathe Industrial Tracts neighborhoods.
Lane Miles: 15.3	
Project Status: Complete	

Revenue Source(s)	Amount	% of Project		Expenditures	Amount	% of Project
CIP Cash	\$168,624.35	4.72%		Design/Engineering		
General Obligation Bonds	\$1,000,000.00	28.01%		Acquisition		
CARS Program				Construction	\$3,503,904.10	98.13%
Street Maintenance Sales Tax	\$2,402,000.00	67.27%		Project Management - Inspection	\$51,989.23	1.46%
Storm Water Funds				Utilities:		
Other Revenue				Other: Testing & Publications	\$14,731.02	0.41%
Total Revenues	\$3,570,624.35	100%		Total Expenditures	\$3,570,624.35	100%

Before Photo



After Photo



“2019 MAQS Micro Surface Project”

Project Number: 3-P-007-19	
Project: 2019 MAQS Micro Surface Project	Project Description: The project includes application of a Type II Modified Aggregate Quickset Surface (MAQS) Micro Surface on the existing street surface and replacement of pavement markings where required on approximately 174 streets.
Lane Miles: 61.0	
Project Status: Complete	

Revenue Source(s)	Amount	% of Project		Expenditures	Amount	% of Project
CIP Cash	\$81,774.28	4.27%		Design/Engineering		
General Obligation Bonds				Acquisition		
CARS Program				Construction	\$1,899,493.08	99.23%
Street Maintenance Sales Tax	\$1,338,000.00	69.90%		Project Management – Inspection	\$9,536.94	0.50%
Storm Water Funds				Utilities:		
Other Revenue: Street Preservation and CIP Cash Balances	\$494,449.10	25.83%		Other: Testing, Towing & Publications	\$5193.36	0.27%
Total Revenues	\$1,914,223.38	100%		Total Expenditures	\$1,914,223.38	100%

Before Photo



After Photo



“Heatherstone and Bradford Falls Local and Collector Street Mill and Overlay Project”

Project Number: 3-P-008-19	
Project: Heatherstone and Bradford Falls Local and Collector Street Mill and Overlay Project	Project Description: The project provided a 2” depth mill and asphalt overlay, spot replacement of concrete curb and sidewalk, installation of ADA sidewalk ramps and replacement of pavement markings on sixty-three (63) local and collector streets in the Heatherstone and Bradford Falls neighborhoods.
Lane Miles: 16.2	
Project Status: Complete	

Revenue Source(s)	Amount	% of Project	Expenditures	Amount	% of Project
CIP Cash	\$24,560.31	0.95%	Design/Engineering		
General Obligation Bonds			Acquisition		
CARS Program			Construction	\$2,544,698.11	98.08%
Street Maintenance Sales Tax	\$2,570,000.00	99.05%	Project Management - Inspection	\$45,627.63	1.76%
Storm Water Funds			Utilities:		
Other Revenue			Other: Testing & Publication	\$4,234.57	0.16%
Total Revenues	\$2,594,560.31	100%	Total Expenditures	\$2,594,560.31	100%

Before Photo



After Photo

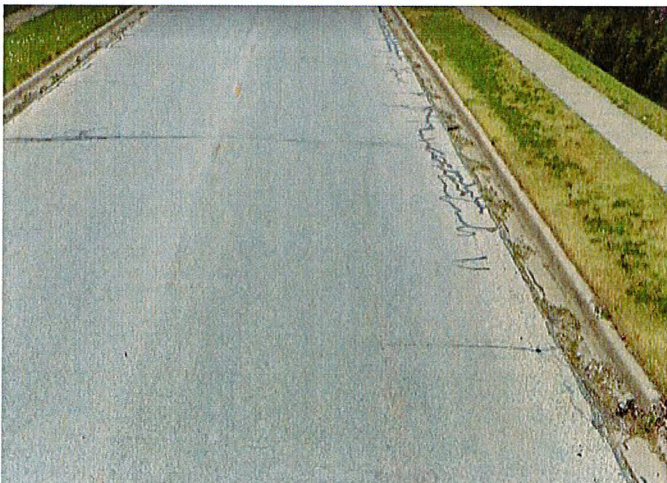


“Street Maintenance Curb Replacement”

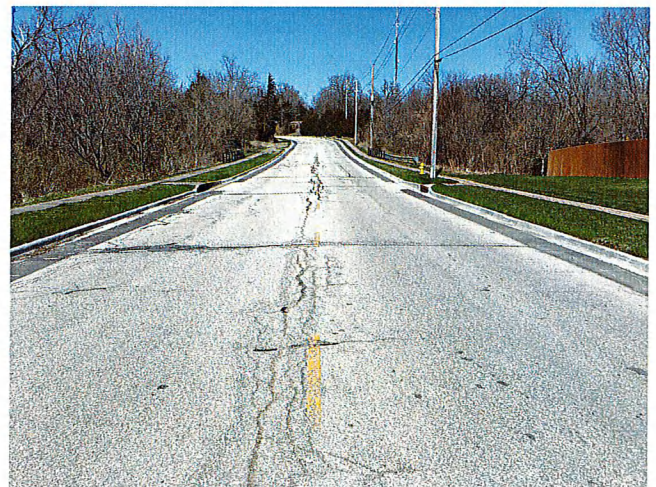
Project Number: 3-P-009-19	
Project: Street Maintenance Curb Replacement	<p>Project Description: Removal and replacement of existing concrete curb and gutter on local and collector streets. The project completed 19,922 linear feet equal to 3.77 miles of deteriorated and broken concrete curb spot location replacement throughout the city.</p> <p>Street Preservation funding is used to pay for all materials related to concrete curb replacement completed by the Street Maintenance Division of the Public Works Department.</p>
Contractor: Street Maintenance Division	
Linear Feet: 19,922	
Project Status: Complete	

Revenue Source(s)	Amount	% of Project	Expenditures	Amount	% of Project
CIP Cash	\$4,658.11	1.91%	Design/Engineering		
General Obligation Bonds			Acquisition		
CARS Program			Construction Materials	\$243,658.11	100%
Street Maintenance Sales Tax	\$239,000.00	98.09%	Project Management - Inspection		
Storm Water Funds			Utilities		
Other Revenue			Other: Testing & Publications		
Total Revenues	\$243,658.11	100%	Total Expenditures	\$243,658.11	100%

Before Photo



After Photo



“Street Maintenance Crack Sealing”

Project Number: 3-P-010-19	
Project: Street Maintenance Crack Sealing	<p>Project Description: Crack Sealing of pavement cracks up to a width of ¼ inch with rubberized asphalt sealant to prevent damage to base asphalt. The project also includes a wide crack sealant on cracks which have become wider than ¼ inch. Crack sealing is the first step of an efficient street preservation program and is a deterrent to potholes forming as a result of cracks in the asphalt pavement.</p> <p>SMST funding is used to pay for materials related to crack sealing completed by the Street Maintenance Division of the Public Works Department.</p>
Contractor: Street Maintenance Division	
Lane Miles: 234 Lane Miles Rubberized Crack Sealant & 3,671 Individual Wide Crack Patches	
Project Status: Complete	

Revenue Source(s)	Amount	% of Project		Expenditures	Amount	% of Project
CIP Cash	\$7,056.16	4.2%		Design/Engineering		
General Obligation Bonds				Acquisition		
CARS Program				Construction Materials	\$167,056.16	100%
Street Maintenance Sales Tax	\$160,000.00	95.8%		Project Management - Inspection		
Storm Water Funds				Utilities		
Other Revenue				Other: Testing & Publications		
Total Revenues	\$167,056.16	100%		Total Expenditures	\$167,056.16	100%

Rubberized Asphalt Crack Seal



Wide Asphalt Crack Seal



“Old 56 Highway Arterial Mill and Overlay”

Project Number: 3-P-001-20	
Project: Old 56 Highway	Project Description: This project from 151 st Street to Lone Elm Road includes partial depth base & crack repair, 2" depth mill and asphalt overlay, widening of existing pavement surface for roadway shoulder raveling, shoulder grading and aggregate surface placement, installation of turn lanes and entrance at the Robinson Campus Parks Facility entrance, along with replacement of pavement markings and traffic signal detection. This project is authorized as an alternate and will only be bid and constructed in 2020 if authorized funding allows once all primary project bids are contracted.
Lane Miles: 4.1	
Project Status: Design	

Revenue Source(s)	Amount	% of Project		Expenditures	Amount	% of Project
CIP Cash	\$166,490.00	100%		Design/Engineering	\$156,490.00	94.0%
General Obligation Bonds				Acquisition		
CARS Program				Construction	\$	%
Street Maintenance Sales Tax	\$0.00	0%		Project Management - Inspection	\$10,000.00	6.0%
Storm Water Funds				Utilities		
Other Revenue				Other: Testing & Publications	\$	%
Total Revenues	\$166,490.00	100%		Total Expenditures	\$166,490.00	100%

Before Photo



After Photo



“127th Street Arterial Mill and Overlay Project”

Project Number: 3-P-002-20	
Project: 127 th Street	Project Description: The project includes asphalt base repair, 2” depth mill and asphalt overlay, minor spot curb and sidewalk replacements, ADA ramp replacement, median crossing repair, pavement markings, and traffic signal detection.
Lane Miles: 5.9	
Project Status: Pre-Construction	

Revenue Source(s)	Amount	% of Project		Expenditures & Obligations	Amount	% of Project
CIP Cash	\$72,000.00	100%		Design/Engineering	\$61,768.00	85.8%
General Obligation Bonds				Acquisition		
CARS Program				Construction	\$	%
Street Maintenance Sales Tax	\$0.00	0%		Project Management - Inspection	\$10,232.00	14.2%
Storm Water Funds				Utilities		
Other Revenue				Other: Testing & Publications	\$	%
Total Revenues	\$72,000.00	100%		Total Expenditures	\$72,000.00	100%

Before Photo



After Photo



“Cedar Creek Parkway Arterial Mill and Overlay”

Project Number: 3-P-003-20	
Project: Cedar Creek Parkway	Project Description: The project includes 3.5” depth mill and asphalt overlay with fiberglass hybrid paving mat, curb replacement, ADA ramp replacement where required, stormwater curb inlet replacements and pavement markings. This project is authorized as an alternate street for 2020 construction, and will only be constructed if funding is available upon completion of primary contracts for 2020 construction.
Lane Miles: 3.0	
Project Status: Design	

Revenue Source(s)	Amount	% of Project		Expenditures & Obligations	Amount	% of Project
CIP Cash	\$99,682.00	100%		Design/Engineering	\$89,682.00	90.0%
General Obligation Bonds				Acquisition		
CARS Program				Construction		
Street Maintenance Sales Tax	\$0	0%		Project Management - Inspection	\$10,000.00	10.0%
Storm Water Funds				Utilities		
Other Revenue				Other: Testing & Publications		
Total Revenues	\$99,682.00	100%		Total Expenditures	\$99,682.00	100%

Before Photo

After Photo



“Ridgeview Road Arterial Mill and Overlay”

Project Number: 3-P-004-20	
Project: Ridgeview Road	Project Description: The project from 159 th Street north to 151 st Street include asphalt base and crack repair, 2” depth mill and asphalt overlay, curb replacement, ADA ramp installation, sidewalk replacement and installation of 8’ wide shared used path, traffic signal detection replacement and pavement markings.
Lane Miles: 3.0	
Project Status: Pre-Construction	

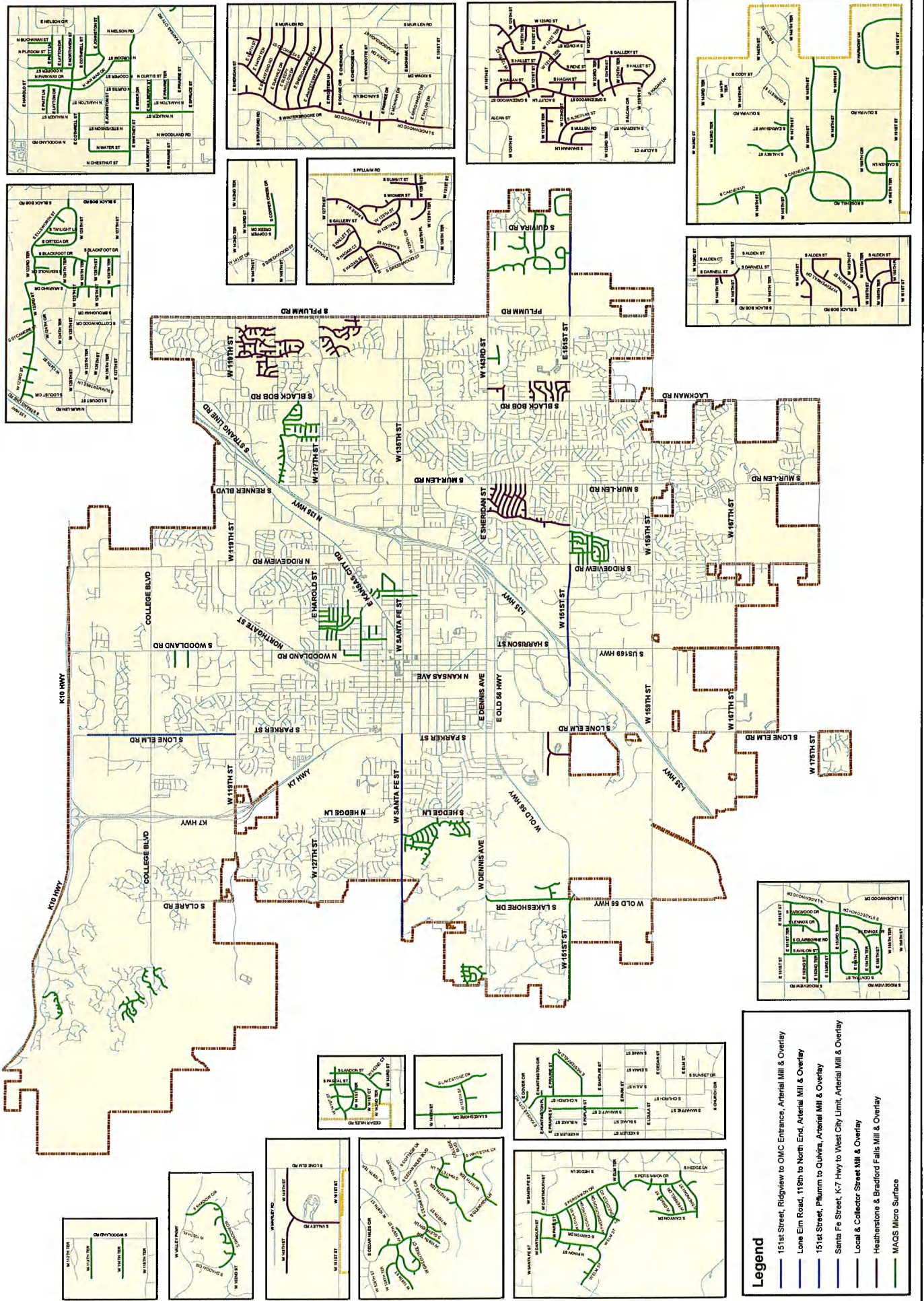
Revenue Source(s)	Amount	% of Project		Expenditures & Obligations	Amount	% of Project
CIP Cash	\$87,000.00	100%		Design/Engineering	\$76,264.00	%
General Obligation Bonds				Acquisition		
CARS Program				Construction		
<i>Street Maintenance Sales Tax</i>	\$0	0%		Project Management - Inspection	\$10,736.00	%
Storm Water Funds				Utilities		
Other Revenue				Other: Testing & Publications		
Total Revenues	\$87,000.00	100%		Total Expenditures	\$87,000.00	100%

Before Photo

After Photo



2019 Street Preservation Program Location Map



Legend

- 15th Street, Ridgeview to OMC Entrance, Arterial Mill & Overlay
- Lone Elm Road, 118th to North End, Arterial Mill & Overlay
- 151st Street, Plumm to Quivira, Arterial Mill & Overlay
- Santa Fe Street, K-7 Hwy to West City Limit, Arterial Mill & Overlay
- Local & Collector Street Mill & Overlay
- Heatherstone & Bradford Falls Mill & Overlay
- MACS Micro Surface

RESOLUTION NO. 19-1007

A RESOLUTION AUTHORIZING THE 2019 STREET PRESERVATION PROGRAM, PN 3-P-000-19.

BE IT RESOLVED BY THE GOVERNING BODY OF THE CITY OF OLATHE, KANSAS:

SECTION ONE: Pursuant to the authority of Charter Ordinance No. 74 of the City, the Governing Body hereby authorizes the 2019 Street Preservation Program. Such program shall rehabilitate the following streets in the City of Olathe:

151st Street Arterial Mill and Overlay Project – Ridgeview Road to OMC Access Road. The project funding consists of CIP Fund Cash and Street Maintenance Sales Tax Cash. The project will be bid and constructed along with the Ridgeview Road Intersection Improvements Project.

Lone Elm Road Arterial Mill and Overlay Project – 119th Street to the North End. The project funding consists of CIP Fund Cash and Street Maintenance Sales Tax Cash.

151st Street Arterial Mill and Overlay Project – Pflumm Road to Quivira Road. The project funding consists of CIP Fund Cash and Street Maintenance Sales Tax Cash.

Santa Fe Street Arterial Mill and Overlay Project – Parker Street to Lakeshore Drive. The project funding consists of CIP Fund Cash and Street Maintenance Sales Tax Cash.

Local & Collector Street Mill and Overlay Project – See street list exhibits (**Exhibit A**). The project includes 41 streets totaling 15 lane miles. The project funding consists of General Obligation (G.O.) Bonds, CIP Fund Cash and Street Maintenance Sales Tax Cash.

Heatherstone and Bradford Falls Local & Collector Street Mill and Overlay Project – See street list exhibits (**Exhibit B**). The project includes 63 streets totaling 16 lane miles. The project funding consists of G.O. Bonds, CIP Fund Cash and Street Maintenance Sales Tax Cash.

Micro Surface Project – See street list exhibits (**Exhibit C**). The project includes Type II Micro Surface on approximately 174 streets, totaling 61 lane miles. The project funding consists of CIP Fund Cash and Street Maintenance Sales Tax Cash.

Street Maintenance Curb Replacement Project – Removal and replacement of approximately 25,000 linear feet of deteriorated curb and gutter by Street Maintenance Concrete Crews in multiple locations throughout Olathe.

Street Maintenance Crack Sealing Project – Crack sealing materials for approximately 250 lane miles to be applied by Street Maintenance Crews.

Design of 2020 Arterial Mill and Overlay Projects – Design costs for 2020 Arterial Mill and Overlay Projects will utilize 2019 CIP Fund Cash and/or Street Maintenance Sales Tax Funds. The locations for the 2020 projects are to be determined.

Alternate Streets are included in the Street Listings for the Local & Collector Mill and Overlay and Micro Surface Projects. The alternate streets are not included in the total number of primary streets and lane miles listed above with each project. These alternate streets are authorized for construction but not currently scheduled for construction.

SECTION TWO: The cost for completing the projects listed in Section One is \$16,550,000. Funds to pay for the projects shall come from the following sources:

Street Maintenance Sales Tax	\$12,750,000
CIP Fund	\$ 2,800,000
General Obligation Bonds	<u>\$ 1,000,000</u>
TOTAL	\$16,550,000

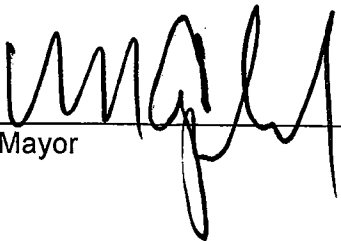
SECTION THREE: Pursuant to the authority of Charter Ordinance No. 74, the Governing Body hereby authorizes the issuance of not to exceed \$1,000,000 of general obligation bonds, all exclusive of issuance costs and interest on any temporary financing.

SECTION FOUR: The City intends to reimburse itself for capital expenditures made on or after the date which is 60 days before the date of this Resolution in connection with the project, pursuant to Treasury Regulation § 1.150-2, with the proceeds of bonds and/or notes in the maximum principal amount of \$1,000,000 exclusive of issuance costs and any interest costs for temporary financing.

SECTION FIVE: This Resolution shall take effect immediately.

ADOPTED by the Governing Body this 22nd day of January, 2019.

SIGNED by the Mayor this 22nd day of January, 2019.



Mayor

ATTEST:

Emil Venant
City Clerk

(SEAL)



APPROVED AS TO FORM:

[Signature]
City Attorney

**2019 LOCAL AND COLLECTOR STREET MILL AND OVERLAY PROJECT
PN 3-P-006-19**

STREET	FROM/TO
West 145th Street	Darnell to Black Bob
South Darnell Street	143rd Street to 145th Street
West 144th Terrace	Darnell to West End Cul-de-sac
South Alden Street	149th Terrace to 151st Street
West 147th Street	Black Bob to Alden
West 149th Street	Black Bob to Alden
West 149th Terrace	150th Street to Alden
West 149th Court	149th Street to East End Cul-de-sac
West 150th Street	Black Bob to 150th Place
West 150th Place	Alden to 150th Terrace
West 150th Terrace	Black Bob to 151st Street
South Alden Street	147th Street to 149th Street
West 149th Street	149th Street to North End Cul-de-sac
West 147th Street	147th Street to Northwest End Cul-de-sac
South Peppermill Court	147th Street to North End Cul-de-sac
West Peppermill Drive	Black Bob to Alden
West Peppermill Drive	Peppermill to Southeast End Cul-de-sac
East Jamestown Drive	Mur-Len to Lindenwood
East Sheridan Bridge Lane	Lindenwood to Mur-Len
East Sleepy Hollow Drive	Mur-Len to Lindenwood
East Stratford Road	Mur-Len to Lindenwood
East Sunvale Drive	Mur-Len to Lindenwood
East 144th Street	Mur-Len to Kenwood
East 144th Street	144th Street to North End Cul-de-sac
East 144th Terrace	Mur-Len to Kenwood
East Frontier Lane	Frontier to North End Cul-de-sac
East 144th Street	144th Street to North End Cul-de-sac
South Lindenwood Drive	Lindenwood to East End Cul-de-sac
South Lindenwood Drive	Lindenwood to East End Cul-de-sac
South Lindenwood Drive	Lindenwood to East End Cul-de-sac
South Lindenwood Drive	Lindenwood to East End Cul-de-sac
South Kenwood Street	Sheridan to Stratford
South Kenwood Street	Sleepy Hollow to Stratford
East Frontier Lane	Jamestown to Sleepy Hollow
South Lindenwood Drive	151st Street to 2681ft North
South Lindenwood Drive	2681 ft North of 151st Street to 143rd Street

East Frontier Lane
East Pawnee Drive
West 149th Street
South Valley Road
West 149th Street

Lindenwood to Jamestown
Lindenwood to West End Parking Lot
Lone Elm to Valley
151st Street to 149th Street
Valley to East End Dead End

2019 ALTERNATE STREETS

STREET	FROM/TO
West Sheridan Street	Parker to Troost
West Sheridan Street	Troost to Grant
South Sherman Avenue	Oak to Sheridan
South Sherman Avenue	Sheridan to Wabash
South Troost Street	Sheridan to Dennis
South Troost Street	Sheridan to Troost
West Larkspur Place	Honeysuckle to Troost
South Lee Avenue	Sheridan to Wabash
West Little Street	Grant to Lee
West Wabash Street	Troost to Grant
South Troost Street	Edgemere to Wabash
South Weaver Street	Oak to Dennis
South Weaver Street	Sheridan to Oak
South Edgemere Court	Honeysuckle to Southwest End Cul-de-sac
South Edgemere Drive	Sheridan to Edgemere Court
South Edgemere Drive	Sheridan to Wabash
South Edgemere Drive	Edgemere Court to Troost
West Oak Street	Troost to Grant
West Poor Street	Weaver to Grant
South Grant Street	Dennis to Sheridan
South Grant Street	Sheridan to Elm
South Grant Terrace	Sheridan to Grant
West Hershey Street	Troost to Lee
South Honeysuckle Drive	Sheridan to Troost
South Honeysuckle Drive	Troost to Sheridan
West 120th Terrace	Woodland to Cherry
West 121st Lane	Walnut to Woodland
West 122nd Terrace	Woodland to West End Cul-de-sac
South Cherry Lane	121st Lane to 120th Terrace
South Chestnut Street	121st Lane to 122nd Terrace
South Walnut Street	North End Cul-de-sac to South End Cul-de-sac
South Water Street	121st Lane to North End Cul-de-sac

**HEATHERSTONE AND BRADFORD FALLS
LOCAL AND COLLECTOR STREET MILL AND OVERLAY PROJECT STREETS
PN 3-P-008-19**

STREET	FROM/TO
South Shannan Lane	123rd Street to North End Dead End
West 123rd Street	Rene Street to South End Cul-de-sac
South Summit Street	123rd Street to East End Cul-de-sac
South Acuff Lane	121st Lane to North End Cul-de-sac
South Albervan Street	123rd Street to 122nd Street
South Alcan Street	122nd Street to North End Dead End
West 120th Street	Rene to Hagan
West 120th Street	123rd Street to East End Dead End
West 120th Street	120th Street to North End Cul-de-sac
West 120th Terrace	Hallet to West End Cul-de-sac
West 120th Terrace	123rd Street to West End Cul-de-sac
West 121st Street	Rene to Greenwood
West 121st Street	123rd Street to West End Cul-de-sac
West 121st Terrace	Shannan to Alcan
West 121st Terrace	Greenwood to Hagan
West 121st Terrace	Northwest End Cul-de-sac to Southeast End Cul-de-sac
West 121st Terrace	123rd Street to Northwest End Cul-de-sac
West 121st Lane	Greenwood to Acuff
West 122nd Street	Shannan to Greenwood
West 122nd Terrace	Hagan to West End Cul-de-sac
West 123rd Terrace	Gallery to West End Cul-de-sac
South Greenwood Street	Northeast End Cul-de-sac to Southwest End Cul-de-sac
West 124th Street	Gallery to West End Cul-de-sac
West 124th Terrace	Greenwood to East End Cul-de-sac
West 125th Street	Hallet to Gallery
South Summit Street	123rd Street to West End Cul-de-sac
South Hagan Street	Hagan Street to West End Cul-de-sac
West 121st Terrace	121st Terrace to South End Cul-de-sac
South Greenwood Street	Greenwood to West End Cul-de-sac
South Cottonwood Drive	119th Street to 120th Street
South Widmer Street	121st Terrace to 123rd Street
South Mullen Road	123rd Street to Shannan
South Gallery Street	125th Street to 123rd Street
South Greenwood Street	123rd Street to 125th Street
South Greenwood Street	119th Street to 123rd Street

South Hagan Street	Greenwood to Greenwood
South Hagan Street	123rd Street to North End
South Hallet Street	120th Street to 121st Street
South Hallet Street	120th Street to North End Cul-de-sac
South Hallet Street	125th Street to North End Cul-de-sac
South Rene Street	119th Street to 123rd Street
South Rene Street	Rene to Northwest End Cul-de-sac
South Summit Street	North End Cul-de-sac to South End Cul-de-sac
South Summit Street	131st Street to North End Cul-de-sac
South Summit Street	131st Street to South End Cul-de-sac
West 128th Street	Gallery to Greenwood
West 129th Street	Pflumm to Widmer
West 129th Street	Widmer to Rene
West 129th Terrace	Widmer to Northwest End Cul-de-sac
West 129th Circle	Widmer to West End Cul-de-sac
West 129th Place	129th Street to West End Cul-de-sac
West 131st Street	Pflumm to Widmer
West 127th Terrace	Gallery to West End Cul-de-sac
South Widmer Street	130th Terrace to 775' North
South Widmer Street	Widmer to West End Cul-de-sac
South Widmer Street	Widmer to Northeast End Cul-de-sac
South Widmer Street	Rene to 775' North of 130th Terrace
South Gallery Street	127th Street to 128th Street
South Hagan Street	128th Street to North End Cul-de-sac
South Hagan Street	128th to Greenwood
South Hallet Street	Gallery to Northwest End Cul-de-sac
South Hagan Court	Gallery to Northwest End Cul-de-sac
South Rene Street	127th Street to 129th Street

**2019 MAQS MICRO SURFACE PROJECT
PN 3-P-007-19**

STREET NAME	FROM/TO
South Seminole Drive	123rd Terrace to South End Cul-de-sac
South Shadow Circle	Valley Parkway to Pavement Change
South Shadow Circle	Shadow Circle to North End Cul-de-sac
South Shadow Circle	Shadow Circle to North End Cul-de-sac
South Shadow Circle	Shadow Circle to both North End Cul-de-sacs
South Shadow Circle	Shadow Circle to North End Cul-de-sac
South Shadow Circle	Shadow Circle to South End Cul-de-sac
West Sheridan Street	Hedge Lane to West End Dead End
South Stagecoach Drive	151st Street to 155th Street
East Johnston Street	Parkway to Nelson
East Johnston Circle	Nelson to East End Cul-de-sac
South Sycamore Street	123rd Street to North End Cul-de-sac
West 108th Terrace	109th Street to Northwest End Cul-de-sac
West 109th Street	Cedar Niles Circle to East End Cul-de-sac
West 109th Street	Cedar Niles Circle to West End Cul-de-sac
West 109th Terrace	Cedar Niles Circle to South End Cul-de-sac
West 110th Terrace	Cedar Niles to Southwest End Cul-de-sac
West 110th Terrace	110th Terrace to South End Cul-de-sac
West 111th Terrace	Cedar Niles Boulevard to Southwest Cul-de-sac
West 113th Terrace	Woodland to West End Cul-de-sac
West 114th Terrace	Woodland to West End Cul-de-sac
West 123rd Street	Strang Line to Arapaho
West 123rd Terrace	Arapaho to Ortega
West 124th Terrace	Blackfoot to West End Cul-de-sac
West 123rd Street	123rd Street to North End Cul-de-sac
West 123rd Street	123rd to North End Cul-de-sac
West 123rd Street	123rd to South End Cul-de-sac
West 123rd Street	123rd to South End Cul-de-sac
West 125th Street	Arapaho to West End Cul-de-sac
West 125th Street	Blackfoot to West End Cul-de-sac
West 125th Street	Black Bob to Ortega
West 123rd Street	123rd Street to North End Cul-de-sac
West 123rd Street	123rd Street to North End Cul-de-sac
West 123rd Street	123rd Street to South End Cul-de-sac
West 125th Terrace	Arapaho to East End Cul-de-sac
West 125th Terrace	Arapaho to West End Cul-de-sac

West 126th Street	Blackfoot to West End Cul-de-sac
West 126th Street	Arapaho to West End Cul-de-sac
South Arapaho Drive	127th Street to 123rd Street
West 126th Terrace	Blackfoot to West End Cul-de-sac
West 126th Terrace	Arapaho to West End Cul-de-sac
South Avalon Street	151st Street to South End Cul-de-sac
West 141st Street	Cedar Niles East End Dead End
West 141st Terrace	141st Street to Landon
West 141st Court	141st Terrace to 141st Terrace
West 142nd Court	Landon to Southeast End Cul-de-sac
West 142nd Terrace	Landon to West End Dead End
West 143rd Terrace	Quivira to West End Cul-de-sac
West 147th Street	Quivira to West End Dead End
West 146th Street	Caenen to West End Dead End
South Cedar Niles Circle	Cedar Niles to East End Cul-de-sac
West 148th Street	Quivira to East End City Limit
West 148th Street	Quivira to Rosehill
West 149th Street	Quivira to 148th Street
West 149th Street	Quivira to 148th Street
West 150th Street	Lakeshore to Lakestone
West 150th Terrace	Rosehill to Caenen
South Caenen Lane	148th Street to North Pavement Change
South Caenen Lane	146th Street to North Pavement Change
North Cooper Street	Harold to 125th Terrace
South Mesquite Street	Elm to North End Cul-de-sac
West Elm Street	Elm to North End Cul-de-sac
West 150th Circle	150th Terrace to Caenen
West 151st Street	Old 56 Highway to New Century Parkway
East 151st Terrace	Avalon to Stagecoach
East 152nd Street	Ridgeview to Avalon
East 152nd Terrace	Ridgeview to Avalon
East 153rd Street	Ridgeview to Stagecoach
East 153rd Terrace	Lindenwood to Central
East 154th Street	Ridgeview to 153rd Terrace
East 154th Terrace	Central to Lennox
East 155th Street	Stagecoach to Central
South Lennox Drive	Lennox to East End Cul-de-sac
East 154th Street	154th Street to North End Cul-de-sac
South Twilight Lane	125th Street to Ellsworth
South Stonecrest Road	Persimmon to Southwest End Dead End
South Pascal Street	141st Terrace to North End Dead End
South Landon Street	143rd to North End Dead End
South Archer Street	141st Street to North End Dead End

West Concord Drive	Persimmon to Canyon
West Loula Street	Persimmon to Canyon
West Park Street	Pinon to West End Dead End
West Park Street	Pinon to Canyon
West Park Street	Canyon to Park Street Cul-de-sac
West Park Street	Persimmon to Park Street Cul-de-sac
North Pinon Street	Elm to Dartmouth
West Park Street	Park to North End Cul-de-sac
West Loula Street	Persimmon to Canyon
West Concord Drive	Persimmon to Canyon
West Elm Street	Pinon to Singletree
West Dartmouth Street	Pinon to West End Dead End
West Dartmouth Street	Pinon to East End Cul-de-sac
South Blackfoot Drive	123rd Terrace to 125th Terrace
South Blackfoot Drive	127th Street to 125th Terrace
West Greentree Court	Greentree to Northwest End Cul-de-sac
West 110th Terrace	110th Terrace to North End Cul-de-sac
North Buchanan Street	Harold to Piatt
West 145th Street	Caenen to West End Cul-de-sac
North Van Mar Drive	Harold to Purdom
South Lakeshore Drive	Dennis to 151st Street
South Lakestone Court	150th Street to South End Dead End
South Lakestone Drive	North End Cul-de-sac to South End Dead End
East Layton Drive	Cooper to Nelson
East Layton Drive	Van Mar to Walker
East 154th Terrace	153rd Terrace to Lennox
South Lennox Drive	151st Street to 153rd Street
South Lennox Drive	154th Terrace to 155th Street
South Caenen Lane	Rosehill to West End Dead End
South Caenen Lane	Rosehill to 148th Street
South Caenen Lane	146th Street to South Pavement Change
South Caenen Lane	143rd Street to South Pavement Change
South Caenen Lane	150th Terrace to 151st Street
South Caenen Lane	Caenen to West End Cul-de-sac
South Cedar Niles Circle	South of 108th Street to East of Glenview Lane
South Central Street	153rd Terrace to 155th Street
South Persimmon Drive	Persimmon to East End Cul-de-sac
South Persimmon Drive	Persimmon to West End Cul-de-sac
South Persimmon Drive	Persimmon Drive to East End Cul-de-sac
West Grace Street	Grace to Northwest End Cul-de-sac
North Church Street	Santa Fe to Kansas City Road
South Clairborne Road	151st Terrace to Avalon
North Cooper Street	Northview to Harold

South Copper Creek Drive	143rd Street to Copper Creek Drive
South Copper Creek Drive	East End Cul-de-sac to West End Cul-de-sac
East Cothrell Street	Nelson to Parkway Drive
East Cothrell Street	Walker to Woodland
North Walker Street	Whitney to Spruce
North Walker Street	Woodland to Whitney
East Westerfield Place	Poplar to Prairie
East Whitney Street	Woodland to Chestnut
East Whitney Street	Woodland to Nelson
South Whitetail Lane	110th Terrace to Southwest End Cul-de-sac
South Whitetail Lane	111th Terrace to South End Cul-de-sac
North Mahaffie Street	Santa Fe to Prairie
South Mahaffie Street	Santa Fe to South Pavement Change
East Mulberry Street	Walker to Curtis
East Dover Circle	Kansas City Road to Southeast End Cul-de-sac
South Earnshaw Street	147th Street to North End Dead End
East Northview Street	Nelson to Walker
West Ellsworth Court	Ellsworth to Southwest End Cul-de-sac
South Ellsworth Street	Ortega to 125th Street
West Elm Street	Persimmon to West End Dead End
West Elm Terrace	Hedge to Southwest End Dead End
South Canyon Drive	Pavement Change North of Concord to North End
South Canyon Drive	Elm to North End Dead End
South Canyon Drive	Sheridan to North End Cul-de-sac
South Ortega Drive	125th Street to Elsworth
West Ferrel Drive	Persimmon to Canyon
West Fredrickson Drive	Persimmon to Canyon
North Parkway Drive	Harold to Johnston
South Parkwood Drive	151st Terrace to Lennox
South Persimmon Drive	Santa Fe to Persimmon
East Piatt Lane	Walker to Van Mar
East Piatt Lane	Cooper to Nelson
East Poplar Street	Church to Westerfield
East Prairie Street	Church to Westerfield
East Prairie Terrace	Hamilton to Curtis
North Purdom Street	Whitney to Van Mar
North Purdom Street	Harold to Piatt
North Purdom Street	Cothrell to Johnston
South Persimmon Drive	Persimmon to Elm
South Persimmon Drive	Sheridan to Elm Terrace
South Persimmon Drive	Sheridan to South End Cul-de-sac
South Glenview Lane	110th Street to Cedar Niles
West Grace Street	Persimmon to Canyon

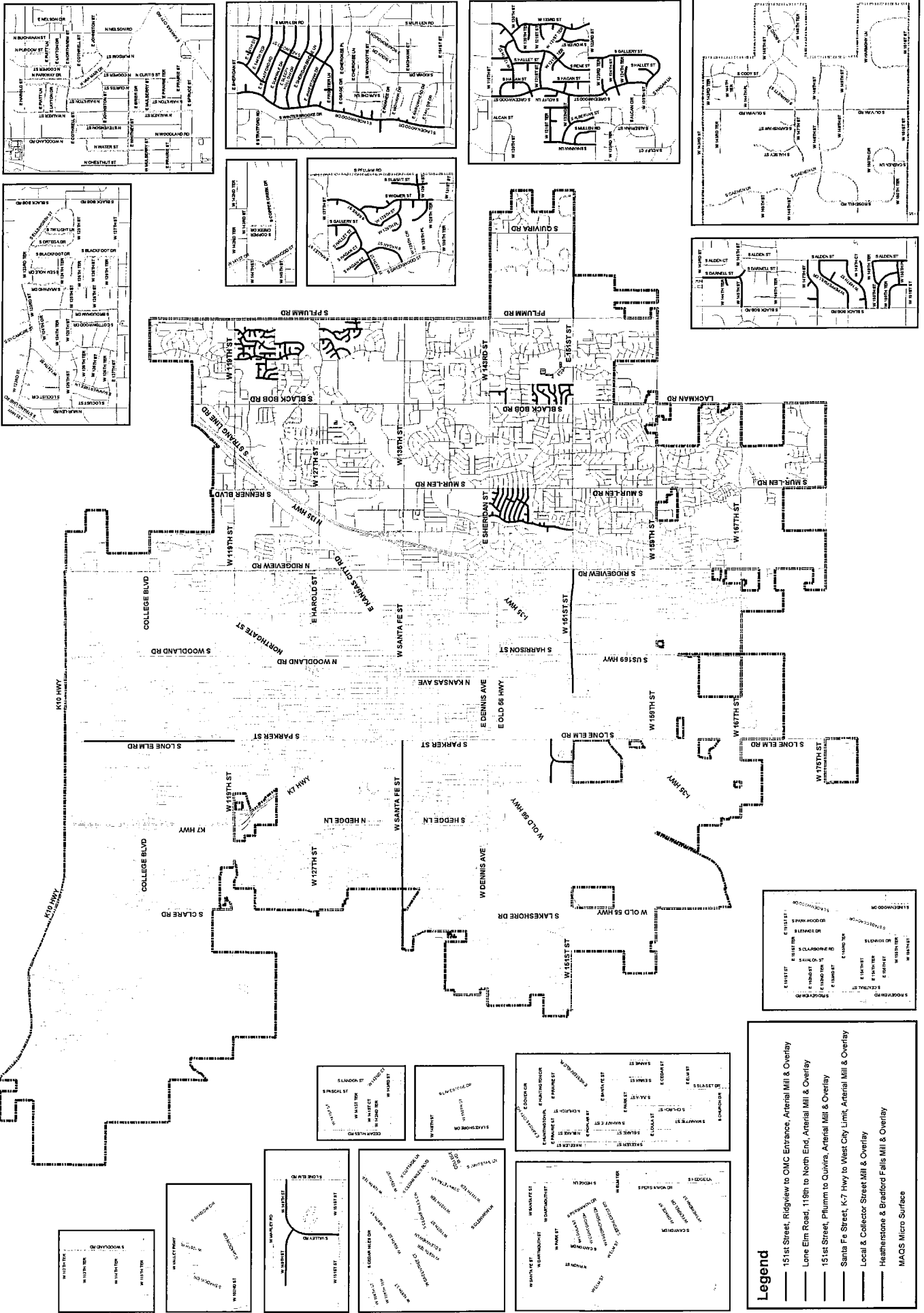
West Greentree Court
South Halsey Street
West Harmony Lane
East Huntington Circle
East Huntington Place
South Rosehill Road
South Inverness Street
South Inverness Street
South Shadow Circle

Cedar Niles Circle to 109th Street
147th Street to North End Dead End
151st Street to 151st Street
Church to East End Cul-de-sac
Church to Northwest End Cul-de-sac
150th Terrace to 148th Street
141st Street to North End Cul-de-sac
141st Street to 141st Terrace
North Pavement Change to South Pavement Change

**2019 MAQS MICRO SURFACE PROJECT, PN 3-P-007-19
ALTERNATE STREETS**

STREET NAME	FROM/TO
South Summertree Circle	124th Street to North End Cul-de-sac
South Summertree Lane	125th Street to 126th Terrace
South Sycamore Street	125th Street to 127th Street
West 124th Street	Mur-Len to 123rd Street
West 124th Terrace	Arapaho to West End Cul-de-sac
West 124th Circle	Sycamore to Brougham
West 124th Circle	124th Circle to South End Cul-de-sac
West 124th Circle	124th Circle to South End Cul-de-sac
West 125th Street	Mur-Len to Sycamore
West 125th Street	Sycamore to Brougham
West 125th Circle	125th Street to North End Cul-de-sac
West 125th Terrace	Sycamore to East End Cul-de-sac
West 125th Terrace	Sycamore to Summertree
West 125th Place	Sycamore to Cottonwood
West 125th Court	North End Cul-de-sac to South End Cul-de-sac
West 126th Street	Brougham to Sycamore
West 126th Street	Sycamore to Summertree
West 126th Terrace	Mur-Len to Sycamore
South Brougham Drive	124th Terrace to 127th Street
South Locust Circle	124th Street to North End Cul-de-sac
South Locust Street	125th Street to 126th Terrace
South Cottonwood Drive	125th Street to 126th Street
South Sycamore Street	125th Street to 124th Terrace

2019 Street Preservation Program Location Map



Legend

- 151st Street, Ridgview to OMC Entrance, Arterial Mill & Overlay
- - - Lone Elm Road, 119th to North End, Arterial Mill & Overlay
- · · 151st Street, Plum to Quivira, Arterial Mill & Overlay
- Santa Fe Street, K-7 Hwy to West City Limit, Arterial Mill & Overlay
- Local & Collector Street Mill & Overlay
- Heatherstone & Bradford Falls Mill & Overlay
- MAQS Micro Surface

Definitions of Street Preservation Project Categories

Crack Seal and Wide Crack Patch Seal



Crack seal is a preventative maintenance process consisting of sealing the cracks in the pavement with a rubberized sealant or asphalt sealing product to prevent the moisture from penetrating into the base and subgrade material. The joint between the asphalt surface and the concrete curb and gutter is also sealed. Wide Crack Patch

Seal is used on larger cracks that have also developed minor depressions. Usually along transverse cracks that are opened to a width wider than one half inch. The wide crack material incorporates a fine aggregate material to allow filling of larger cracks and depressions.

Target streets are Good or better condition.

Crack Seal is completed by Contractors and City Street Maintenance Crews depending on the scope of the project.

Resident Impact: Minimum, street open to traffic during work.

Full-Depth Repair (FDR)

If base or subgrade failure has occurred because of severe cracks or settlements of a pavement section, that pavement section needs to be replaced or repaired full-depth (typically 8 to 10 inches) to



a condition equal to or better than the surrounding pavement sections.

Full depth repairs are completed by Contractors and City Street Maintenance Crews depending on the scope of the project.

Resident Impact: Minimum, street open to traffic during work.

Micro Surface

Micro Surface is a mixture of an asphaltic oil and water (emulsion) and crushed rock aggregate that is spread over the street at about ¼ to 3/8-inch



thickness. The micro "cures" when the water evaporates leaving only the asphalt to coat the crushed rock. The asphalt acts as a binder to hold the slurry together and bonds to the existing pavement. The Micro Surface protects the existing street surface from the effects of aging and oxidizing and increases the skid resistance. Micro

Surface typically requires a crack seal on cracks 3/16 inch and larger.

All Micro Surface Streets are crack sealed prior to surface placement. Prep work may also include a minor amount of Full Depth Repair or surface replacement areas depending upon conditions; however, Micro Surface is typically used on streets that are in good to excellent condition. In general, a Micro Surface does not extend the life cycle of the pavement; it helps preserve the remaining utility and original design life of the pavement. Micro Surface is strictly a preventative maintenance operation.

Micro Surface projects are contracted.

Resident Impact: Medium – 2 to 4-hour cure time with street completely closed to traffic.

Ultrathin Bonded Asphalt Surface (UBAS)

An Ultrathin Bonded Asphalt Surface is an overlay that consists of a single layer of hot mix asphaltic concrete (minimum of 3/4 inch thick) used to level, waterproof, and restore the original street shape and ride. Edge Milling may be utilized to maintain the surface edge at the curb and gutter. Although it is not intended to add a substantial amount of structural value to the pavement section, it is a minor structural improvement, nonetheless. All UBAS streets are crack sealed prior to surface placement. Prep work may also include small amounts of isolated Full Depth Repair.

UBAS projects are contracted.

Resident Impact: medium – 4 to 8 hours street closed to traffic until pavement is placed, compacted and cooled.

Asphalt Mill and Overlay

Asphalt Mill and Overlay is rehabilitation which typically includes less than 30% FDR, limited curb and gutter repairs, ADA required sidewalk ramp improvements and a 2" depth structural mill and overlay.



Asphalt Mill and Overlay projects are contracted. FDR Base Repair may be completed by Street Maintenance crews prior to contractor construction.

Resident Impact: medium – street remains open to residents during concrete work with access limited at times, 1 to 2 days paving requires 4 to 8 hours street closed to traffic until pavement is placed, compacted and cooled.

Mill and Overlay Major Repair

Mill and Overlay Major Repair is a rehabilitation which typically includes greater than 30% but less than 70% FDR, extensive curb and gutter replacement, and a structural asphalt overlay usually 2" or more.

Mill and Overlay Major Repair projects are contracted. FDR Base Repair may be

completed by Street Maintenance crews prior to contractor construction.

Resident Impact: medium – street remains open to residents during concrete work, larger sections of FDR may require street closure at times, 1 to 2 days surface paving requires 4 to 8 hours street closed to traffic until pavement is placed, compacted and cooled.



Curb & Gutter Replacement



Concrete curb & gutter replacement if needed is completed by the contractor on all Street Preservation Asphalt Mill and Overlay projects. Curb Only Replacement Projects will usually be completed by Street Maintenance.

Resident Impact: medium – street remains open to residents during concrete work; however, access to residential drives may be limited at times.

Reconstruction

Reconstruction is the process of replacing the entire street within the existing right-of-way and consists of subgrade improvements, replacing the full depth asphalt or concrete pavement section, all the curb and gutter, storm sewer, sidewalks and ADA Sidewalk ramps. Street reconstruction can incorporate moderate changes to the street alignment, profile, cross section, and roadway width.

Resident Impact: Major, project duration varies depending on length of street. The street is usually closed to thru traffic with access provided to residents and emergency personnel only. Resident access is usually restricted during working hours and during certain construction phases.

Reconstruction projects are contracted.



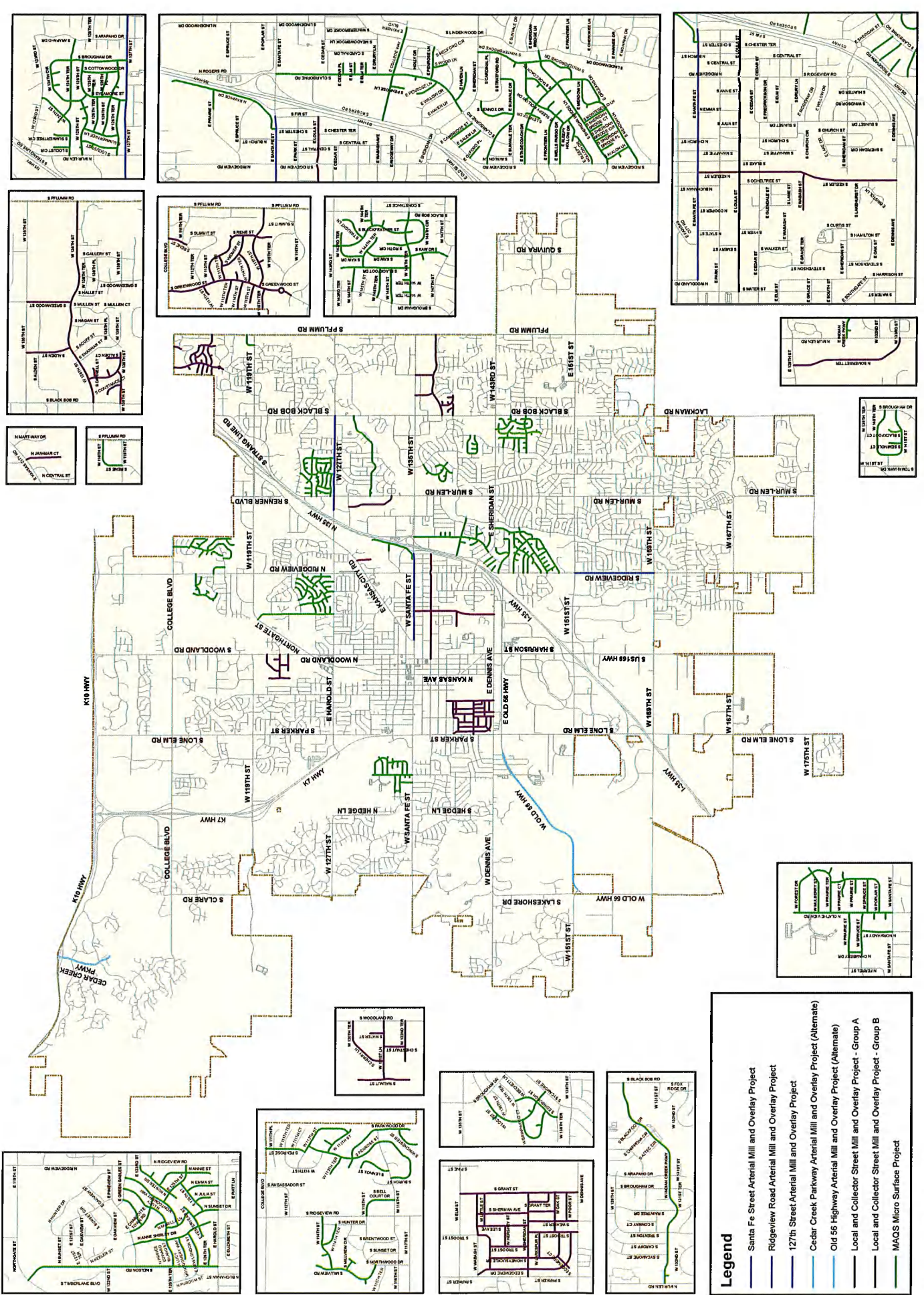
VI

2020 Program

COVID19 Revised - 2020 Street Preservation Program Funding Allocation
 Updated 4/9/2020

Project #	Project Name	CARS Program	CIP Cash	CPR Cash	SMST	GO Bonds	Street Excise	Other	2020 Revenues to Projects
3-P-000-20	2020 Street Preservation Program	-	-	-	185,000.00	-	-	-	185,000.00
3-P-001-19	Santa Fe Arterial M&O (KC Road to I-35)	-	-	-	2,200,000.00	-	-	-	2,200,000.00
3-P-002-20	127th Street Arterial M&O (Moore Ave to Black Bob)	600,000.00	-	-	628,000.00	-	-	-	1,228,000.00
3-P-004-20	Ridgeview Road Arterial M&O (151st to 159th)	-	-	-	783,000.00	-	-	-	783,000.00
3-P-005-20	Local and Collector Mill & Overlay - Group A	-	-	-	2,600,000.00	1,000,000.00	-	-	3,600,000.00
3-P-006-20	Local and Collector Mill & Overlay - Group B	-	-	800,000.00	1,524,000.00	-	-	-	2,324,000.00
3-P-007-20	MAQS Micro Surface	-	-	-	1,200,000.00	-	-	-	1,200,000.00
3-P-008-20	Street Maintenance Curb Replacement	-	-	-	400,000.00	-	-	-	400,000.00
3-P-009-20	Street Maintenance Crack Seal	-	-	-	210,000.00	-	-	-	210,000.00
2021 Design Projects		600,000.00	-	800,000.00	9,730,000.00	1,000,000.00	-	-	12,130,000.00
3-P-001-21	Mur-Len Road Arterial Mill & Overlay - SF to Rogers	-	-	-	180,000.00	-	-	-	180,000.00
3-P-002-21	159th Street Arterial Mill & Overlay - 169 Hwy to Brougham	-	-	-	230,000.00	-	-	-	230,000.00
3-P-003-21	Ridgeview Road Arterial Mill & Overlay Sheridan to SF	-	-	-	60,000.00	-	-	-	60,000.00
Total 2020 Revenues Allocated to Projects		600,000.00	-	800,000.00	10,200,000.00	1,000,000.00	-	-	12,600,000.00
Total 2020 Revenues to Projects		-	-	-	470,000.00	-	-	-	470,000.00

2020 Street Preservation Program Location Map



Legend

- Santa Fe Street Arterial Mill and Overlay Project
- Ridgeview Road Arterial Mill and Overlay Project
- 127th Street Arterial Mill and Overlay Project
- Cedar Creek Parkway Arterial Mill and Overlay Project (Alternate)
- Old 56 Highway Arterial Mill and Overlay Project (Alternate)
- Local and Collector Street Mill and Overlay Project - Group A
- Local and Collector Street Mill and Overlay Project - Group B
- MAGS Micro Surface Project

RESOLUTION NO. 20-1003

A RESOLUTION AUTHORIZING THE 2020 STREET PRESERVATION PROGRAM, PN 3-P-000-20.

BE IT RESOLVED BY THE GOVERNING BODY OF THE CITY OF OLATHE, KANSAS:

SECTION ONE: Pursuant to the authority of Charter Ordinance No. 74 of the City, the Governing Body hereby authorizes the 2020 Street Preservation Program. Such program shall rehabilitate the following streets in the City of Olathe:

Santa Fe Street Arterial Mill and Overlay Project – Kansas City Road to I-35. The project funding consists of CIP Fund Cash and Street Maintenance Sales Tax Cash. The project will be bid and constructed in coordination with the Santa Fe and Ridgeview Geometric Improvements Project.

127th Street Arterial Mill and Overlay Project – Moore Avenue to Black Bob Road. The project funding consists of CIP Fund Cash, Street Maintenance Sales Tax Cash and Johnson County CARS Program.

Ridgeview Road Arterial Mill and Overlay Project – 151st Street to 159th Street. The project funding consists of CIP Fund Cash and Street Maintenance Sales Tax Cash.

Old 56 Highway Arterial Mill and Overlay Project – 151st Street to Lone Elm Road. Alternate Project. The project funding consists of CIP Fund Cash and Street Maintenance Sales Tax Cash.

Cedar Creek Parkway Arterial Mill and Overlay Project – K-10 Highway to the south end. Alternate Project. The project funding consists of CIP Fund Cash and Street Maintenance Sales Tax Cash.

Local and Collector Street Mill and Overlay Projects – See street list exhibits for (**Exhibit A**). The project includes 68 streets totaling 28 lane miles. The project funding consists of General Obligation (G.O.) Bonds, CIP Fund Cash and Street Maintenance Sales Tax Cash.

Micro Surface Project – See street list exhibits (**Exhibit B**). The project includes Type II Micro Surface on approximately 174 streets, totaling 61 lane miles. The project funding consists of CPR Fund Cash and Street Maintenance Sales Tax Cash.

Street Maintenance Curb Replacement Project – Removal and replacement of approximately 25,000 linear feet of deteriorated curb and gutter by Street Maintenance Concrete Crews in multiple locations throughout Olathe. The project funding consists of Street Maintenance Sales Tax Cash.

Street Maintenance Crack Sealing Project – Crack sealing materials for approximately 250 lane miles to be applied by Street Maintenance Crews. The project funding consists of Street Maintenance Sales Tax Cash.

Design of 2021 Arterial Mill and Overlay Projects – Design costs for 2021 Arterial Mill and Overlay Projects will utilize 2020 CIP Fund Cash and/or Street Maintenance Sales Tax Funds. The following projects are currently included, but are not limited to:

Mur-Len Road, Santa Fe Street to Rogers Road
159th Street, US-169 Highway to Brougham Drive
Ridgeview Road, Sheridan Street to Santa Fe Street

Alternate Streets are included in the Street Listings for the Local and Collector Mill and Overlay and Micro Surface Projects. The alternate streets are not included in the total number of primary streets and lane miles listed above with each project. These alternate streets are authorized for construction but not currently scheduled for construction.

SECTION TWO: The cost for completing the projects listed in Section One is \$13,600,000. Funds to pay for the projects shall come from the following sources:

CIP Fund Cash	\$ 2,200,000
CPR Fund Cash	\$ 800,000
G.O. Bonds	\$ 1,000,000
Street Maintenance Sales Tax	\$ 9,000,000
<u>Johnson County Assistance Road System (CARS)</u>	<u>\$ 600,000</u>

TOTAL \$13,600,000

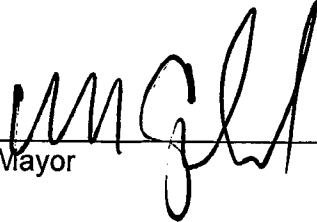
SECTION THREE: Pursuant to the authority of Charter Ordinance No. 74, the Governing Body hereby authorizes the issuance of not to exceed \$1,000,000 of general obligation bonds, all exclusive of issuance costs and interest on any temporary financing.

SECTION FOUR: The City intends to reimburse itself for capital expenditures made on or after the date which is 60 days before the date of this Resolution in connection with the project, pursuant to Treasury Regulation § 1.150-2, with the proceeds of bonds and/or notes in the maximum principal amount of \$1,000,000 exclusive of issuance costs and any interest costs for temporary financing.

SECTION FIVE: This Resolution shall take effect immediately.

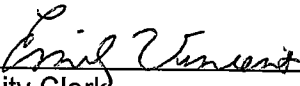
ADOPTED by the Governing Body this 7th day of January 2020.

SIGNED by the Mayor this 7th day of January 2020.



Mayor

ATTEST:




City Clerk

(SEAL)



APPROVED AS TO FORM:



City Attorney

2020 Local and Collector Street Mill and Overlay Project- Group A

STREET	FROM/TO
West Sheridan Street	Parker to Troost
West Sheridan Street	Troost to Grant
South Sherman Avenue	Oak to Sheridan
South Sherman Avenue	Sheridan to Wabash
South Troost Street	Sheridan to Dennis
South Troost Street	Sheridan to Troost
West Larkspur Place	Honeysuckle to Troost
South Lee Avenue	Sheridan to Wabash
West Little Street	Grant to Lee
West Wabash Street	Troost to Grant
South Troost Street	Edgemere to Wabash
South Weaver Street	Oak to Dennis
South Weaver Street	Sheridan to Oak
South Edgemere Court	Honeysuckle to Southwest End Cul-de-sac
South Edgemere Drive	Sheridan to Edgemere Court
South Edgemere Drive	Sheridan to Wabash
South Edgemere Drive	Edgemere Court to Troost
West Oak Street	Troost to Grant
West Poor Street	Weaver to Grant
South Grant Street	Dennis to Sheridan
South Grant Street	Sheridan to Elm
South Grant Terrace	Sheridan to Grant
West Hershey Street	Troost to Lee
South Honeysuckle Drive	Sheridan to Troost
South Honeysuckle Drive	Troost to Sheridan
South Keeler Street	Park to Cedar
South Keeler Street	Wabash to Dennis
South Keeler Street	Cedar to Wabash
East Loula Street	Ridgeview to Fir
East Loula Street	Emery to Keeler
East Loula Street	Water Street to Emery Street
East Loula Street	Keeler to Ridgeview
East Wabash Street	Keeler to West End Dead End (980 feet West)

2020 Local and Collector Street Mill and Overlay Project- Group B

STREET	FROM/TO
West 120th Terrace	Woodland to Cherry
West 121st Lane	Walnut to Woodland
West 122nd Terrace	Woodland to West End Cul-de-sac
South Cherry Lane	121st Lane to 120th Terrace
South Chestnut Street	121st Lane to 122nd Terrace
South Walnut Street	North End Cul-de-sac to South End Cul-de-sac
South Water Street	121st Lane to North End Cul-de-sac
South Alden Court	139th Street to North End Cul-de-sac
South Alden Street	135th Street to 138th Street
West 138th Street	Black Bob to Greenwood
West 138th Street	Greenwood to Pflumm
West 139th Street	Black Bob to 139th Street Intersection
South Darnell Street	139th Street to Northeast End Cul-de-sac
South Constance Court	139th Street to North End Dead End
West 139th Street	138th Street to South End Dead End
South Darnell Street	139th Street to East End Cul-de-sac
South Greenwood Street	138th Street to 135th Street
West 113th Street	Greenwood to Southwest End Cul-de-sac
West 113th Street	Greenwood to Rene
West 113th Terrace	Greenwood to West End Cul-de-sac
West 113th Terrace	Greenwood to Rene
West 114th Street	Greenwood to West Limits (Pavement Change)
West 114th Street	Greenwood to East End Cul-de-sac
West 115th Street	115th Street to Southeast End Cul-de-sac
West 114th Terrace	Greenwood to Widmer
West 115th Street	Greenwood to West End Cul-de-sac
West 115th Street	Greenwood to Pflumm
West 115th Terrace	Greenwood to West Limits (Pavement Change)
South Widmer Street	113th Terrace to Rene
South Greenwood Street	113th Street to Carriage
South Greenwood Street	College Boulevard to 113th Street
South Rene Street	113th Terrace to South End Cul-de-sac
South Rene Street	College Boulevard to South End Cul-de-sac
North Jan-Mar Court	Kansas City Road to South End Cul-de-sac
North Somerset Terrace	Mur-Len to 129th Street

2020 Local and Collector Street Mill and Overlay- Alternate Streets

STREET	FROM/TO
South Robinson Drive	Old 56 Highway to South End
North Cooper Street	Santa Fe to Park
North Emma Street	Santa Fe to South End Cul-de-sac
East Wabash Street	Walker to East End Dead End
South Wabash Circle	North End Cul-de-sac to South End Cul-de-sac
South Walker Street	Cedar to South Bridge
South Sunset Drive	Windsor to Cedar (North Windsor Entrance)
South Sunset Drive	Dennis to Windsor (North Windsor Entrance)
East Cedar Street	Mahaffie to Sunset
South Shannan Lane	141st Terrace to 141st Drive
South Shannan Lane	141st Terrace to 143rd Street
South Shannan Lane	Shannan Lane to South End Cul-de-sac
South Acuff Street	Shannan to North End Cul-de-sac
South Alcan Street	Shannan to North End Cul-de-sac
West 141st Terrace	Shannan to Greenwood
West 142nd Street	West End Cul-de-sac to East End Cul-de-sac
West 142nd Terrace	East End Cul-de-sac to West End Cul-de-sac
West 141st Terrace	141st Terrace to South End Cul-de-sac
West Valley Road	Cedar Hills to West End Cul-de-sac
South Cathy Circle	Diane to West End Cul-de-sac
South Cedar Hills Drive	Dennis to Valley
South Cedar Hills Drive	Valley Road to Southeast End Cul-de-sac
South Wyckford Road	Dennis Avenue to Dennis Avenue
West Dennis Avenue	Dennis to South End Cul-de-sac (West)
West Dennis Avenue	Dennis to South End Cul-de-sac (East)
South Diane Drive	Dennis to North End Cul-de-sac
South Palmer Lane	Palmer Drive to Palmer Drive
South Palmer Drive	Palmer Lane to Palmer Lane
South Palmer Drive	Dennis to Palmer Lane
South Cedar Hills Drive	Dennis to Valley
West Valley Road	Cedar Hills to West End Cul-de-sac
South Cedar Hills Drive	Valley Road to Southeast End Cul-de-sac

2020 MAQS Micro Surface Project

STREET	FROM/TO
East Salem Lane	Ridgeview Road to Clairborne Road
South Seminole Court	141st Street to North End Cul-de-sac
South Sheridan Bridge Circle	Sheridan Bridge Lane to South End Cul-de-sac
South Sheridan Bridge Court	Sheridan Bridge Lane to South End Cul-de-sac
East Sheridan Bridge Lane	Ridgeview to Lindenwood
South Sheridan Bridge Place	Sheridan Bridge Lane to South End Cul-de-sac
East Sleepy Hollow Circle	Sleepy Hollow Drive to Southeast End Cul-de-sac
East Sleepy Hollow Drive	Ridgeview to Wells Fargo
East Sleepy Hollow Drive	Winterbrooke to Wells Fargo
West Spruce Street	Olathe View to Normandy
West Spruce Street	Olathe View to Poplar
West Spruce Street	Normandy to West End Dead End
East Stagecoach Drive	Ridgeview to Winterbrooke
South Stagecoach Place	Stagecoach to Sleepy Hollow
South Summertree Circle	124th Street to North End Cul-de-sac
South Summertree Lane	125th Street to 126th Terrace
North Sunset Drive	Yesteryear to Harold
East Sunvale Drive	Ridgeview to Stratford
South Sycamore Street	125th Street to 127th Street
North Julia Street	126th Street to South End Cul-de-sac
West 112th Street	Penrose to 113th Street
West 113th Street	Penrose to Southeast End Cul-de-sac
West 113th Street	113th Street to Northeast End Cul-de-sac
West 113th Terrace	Penrose to Northwest End Dead End
West 114th Street	Millview to Ridgeview
West 114th Street	114th Street to North End Cul-de-sac
West 114th Terrace	Hunter to 114th Street
West 115th Street	Ridgeview to Bell Court Drive
West 118th Street	Rene to Pflumm
North Anne Shirley Drive	Prince Edward Island to South End Cul-de-sac
North Annie Street	Hunter to South End Cul-de-sac
West 124th Street	Mur-Len to 123rd Street
West 124th Terrace	Arapaho to West End Cul-de-sac
West 124th Circle	Sycamore to Brougham
West 124th Circle	124th Circle to South End Cul-de-sac (West)
West 124th Circle	124th Circle to South End Cul-de-sac (East)
West 125th Street	Mur-Len to Sycamore (Includes First West Cul-de-sac)
East 125th Street	Lucy Montgomery Way to Ridgeview

West 125th Street	Sycamore to Brougham
West 125th Circle	125th Street to North End Cul-de-sac
West 125th Terrace	Sycamore to East End Cul-de-sac
West 125th Terrace	Sycamore to Summertree
West 125th Place	Sycamore to Cottonwood
West 125th Court	North End Cul-de-sac to South End Cul-de-sac
East 126th Street	Sunset to 125th Street
West 126th Street	Brougham to Sycamore (Includes Cul-de-sac)
West 126th Street	Sycamore to Summertree
North Hunter Drive	Hunter to Southeast End Cul-de-sac
West 126th Terrace	Mur-Len to Sycamore
East 126th Terrace	Nelson to East End Cul-de-sac
South Avalon Lane	Sheridan Bridge to Meadow (Including Cul-de-sac)
West 140th Terrace	141st Street to Brougham
West 141st Street	140th Terrace to Brougham
West 143rd Terrace	Blackfeather to East End Cul-de-sac
West 144th Street	Brougham to Blackfoot
West 144th Terrace	Blackfeather to Black Bob
West 144th Terrace	Blackfoot to Southeast End Cul-de-sac
West 145th Terrace	Blackfoot to Brougham
West 146th Street	Blackfoot to Brougham
West 146th Terrace	Brougham to Black Bob
West 146th Circle	146th Terrace to 146th Terrace
West 112th Street	Penrose to Penrose
East Prairie Street	Rawhide to 515' West
East Haven Lane	Clairborne to Southeast End Parking Lot
	Olathe View to West End Dead End (127' West of Chambery)
West Prairie Street	146th Terrace to North End Cul-de-sac (East)
West 146th Terrace	146th Terrace to North End Cul-de-sac (West)
West 146th Terrace	Kaw to West End Cul-de-sac
South Kaw Drive	Kaw to East End Cul-de-sac
South Kaw Drive	Olathe View to West End Cul-de-sac (South)
North Olathe View Road	Olathe View to West End Cul-de-sac (North)
North Olathe View Road	Winterbrooke to West End Cul-de-sac
South Winterbrooke Drive	Sheridan Bridge to Southeast End Cul-de-sac
East Sheridan Bridge Lane	Locust to Northwest End Cul-de-sac
South Locust Street	Briarwood to North End Cul-de-sac
West Briarwood Court	Blackfeather to Northeast End Cul-de-sac
South Twilight Lane	146th Terrace to North End Cul-de-sac
South Twilight Lane	144th Terrace to North End Cul-de-sac
South Twilight Court	Blackfeather to 144th Terrace
South Kaw Drive	

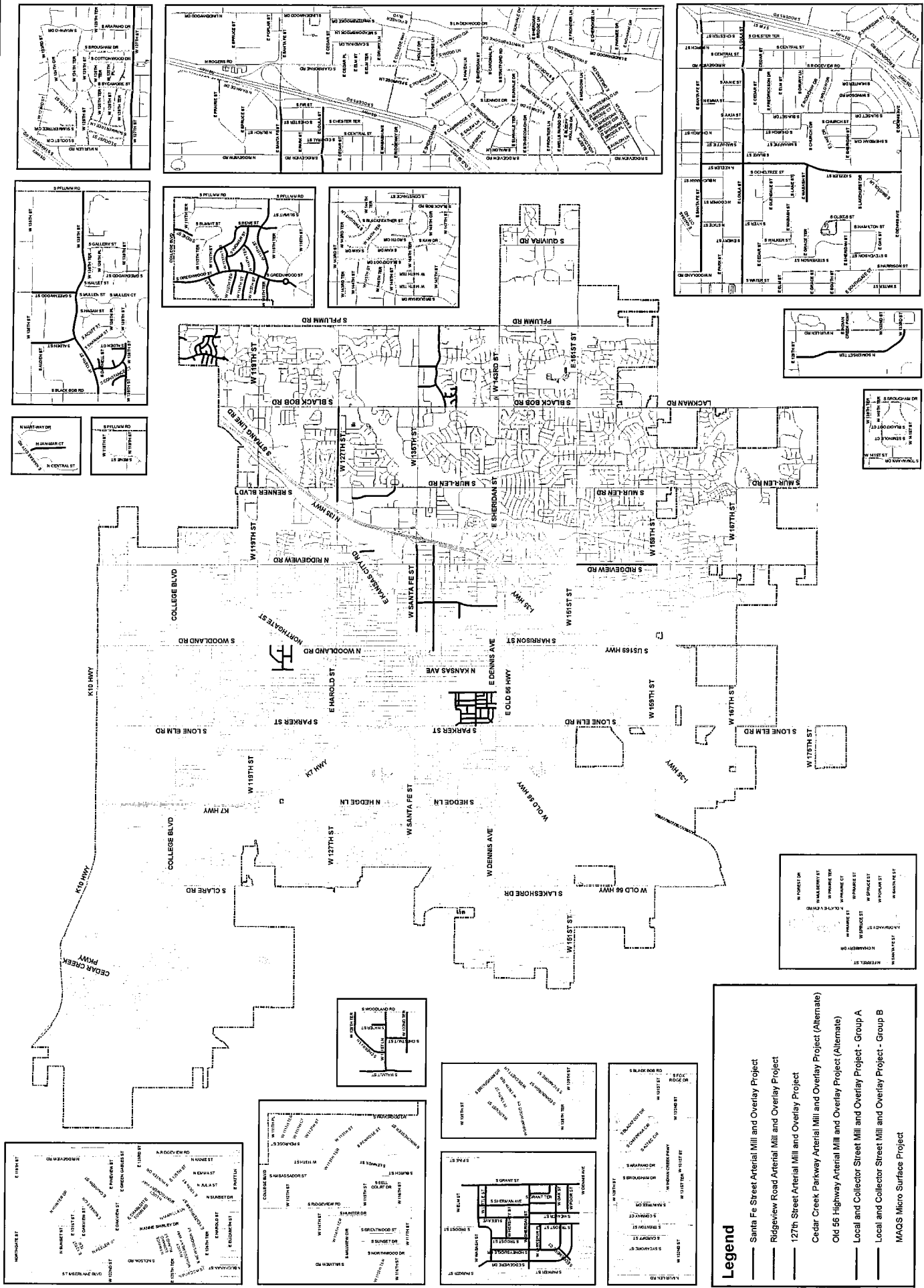
South Kaw Drive	144th Terrace to 147th Street
North Anne Shirley Drive	Pineview to Prince Edward Island
South Blackfeather Street	143rd to South End Cul-de-sac
South Blackfoot Court	141st Street to North End Cul-de-sac
South Blackfoot Drive	146th Terrace to North End Cul-de-sac
West Briarwood Court	Edinburgh to Locust
South Brougham Drive	124th Terrace to 127th Street
South Burch Street	116th Street to Penrose
South Blackfeather Street	Blackfeather to East End Cul-de-sac
South Lennox Street	116th Street to North End Cul-de-sac
South Lennox Drive	Sunvale to Stratford
South Lennox Drive	Stagecoach to South End Cul-de-sac
South Lennox Drive	Stagecoach to North End Cul-de-sac
South Locust Circle	124th Street to North End Cul-de-sac
South Locust Street	Sycamore to Brougham
South Locust Street	125th Street to 126th Terrace
North Lucy Montgomery Way	Green Gables to Marilla
North Lucy Montgomery Way	Anne Shirley Drive to West End Cul-de-sac
East Cambridge Street	Ridgeview to Clairborne
East Cavendish Trail	Green Gables to Charlotte Town
East Cedar Place	Clairborne to East End Cul-de-sac
North Chambery Drive	Spruce to Prairie
East Charlotte Town Road	Lucy Montgomery Way to Pineview
South Clairborne Road	Stagecoach to South End Cul-de-sac
South Clairborne Road	Rogers to Sheridan
South Clairborne Road	Santa Fe to Rogers
East College Way	Lindenwood to Rogers
South Cottonwood Drive	125th Street to 126th Street
East Wells Fargo Drive	Ridgeview to Sheridan Bridge
South Winchester Street	Parkwood to Southwest End Cul-de-sac
South Winterbrooke Drive	Sheridan to Stagecoach
South Wood Lane	Willow to Penrose
North Marilla Lane	Prince Edward Island to Yesteryear
East Meadow Lane	Montebello Orleans (2nd Intersection)
East Meadow Lane	Ridgeview to Montebello
South Millview Circle	Mill View Road to Southeast End Cul-de-sac
South Millview Road	Northwood to North End Dead End
South Montebello Lane	Sheridan Bridge to Meadow
West Mulberry Street	Olathe View to Forest
South Bell Court Drive	116th Street to 115th Street
East Yesteryear Street	Northeast End Cul-de-sac to Southwest End Cul-de-sac
South Nelson Road	Harold to Northgate
East New London Street	Nelson to Anne Shirley

North Normandy Street	Santa Fe to Spruce
North Hunter Drive	Ridgeview to Southwest End Cul-de-sac
South Edinburgh Street	136th Terrace to 138th Terrace
East Elm Street	Clairborne to East End Cul-de-sac
East Elm Terrace	Clairborne to East End Cul-de-sac
North Emma Street	126th Street to Harold
North Olathe View Road	Santa Fe to North End Dead End
East Orleans Drive	Winterbrooke to Meadow (2nd Intersection)
East Oxford Place	Ridgeview to Southeast End Cul-de-sac
West Forest Drive	Olathe View to Mulberry
East Frontier Lane	Ridgeview to East End Cul-de-sac
South Parkwood Drive	116th Street to South End Cul-de-sac
South Parkwood Drive	116th Street to Northwest End Cul-de-sac
East Penrose Lane	Clairborne to Northwest End Cul-de-sac
East Penrose Lane	Clairborne to Willow
South Penrose Lane	College Way to South End Cul-de-sac
South Penrose Street	College Boulevard to 112th Street
South Penrose Street	112th Street to Burch
West Poplar Street	Olathe View to Spruce
West Poplar Street	Spruce to Prairie Court
West Poplar Street	Prairie Terrace to Prairie Court
West Prairie Court	Poplar to East End Cul-de-sac
West Prairie Court	Poplar to West End Cul-de-sac
West Prairie Street	Poplar to West End Cul-de-sac
West Prairie Terrace	Olathe View to Poplar
West Prairie Terrace	Poplar to Mulberry
West Prairie Terrace	Prairie Terrace to Southeast End Cul-de-sac
North Prince Edward Island Street	Nelson to Green Gables
North Prince Edward Island Street	Prince Edward Island to North End Cul-de-sac
North Rawhide Drive	Santa Fe to North End Limit
South Rene Street	118th Street to 119th Street
South Roth Circle	146th Terrace to North End Cul-de-sac
West Indian Creek Parkway	Mur-Len to Black Bob
South Sycamore Street	125th Street to 124th Terrace

2020 MAQS Micro Surface Project- Alternates

STREET	FROM/TO
West 122nd Street	Blackfoot to Fox Ridge
West 123rd Street	Black Bob to West End
South Twilight Lane	123rd Street to South End
South Fox Ridge Drive	121st Terrace South End
West 121st Terrace	Blackfoot to Fox Ridge
West 122nd Terrace	Blackfoot to Fox Ridge
South Blackfoot Drive	123rd to 121st Terrace
West 168th Place	Kimble to West End Dead End
South Bradley Drive	169th Place to 168th Place
West 169th Place	South Mur-Len to 168th Terrace
West 168th Place	Kimble to 167th Terrace
West 168th Terrace	169th Place to 169th Place
West 167th Terrace	Kimble to 168th Place
South Kimble Street	168th Place to 167th Street

2020 Street Preservation Program Location Map



- Legend**
- Santa Fe Street Arterial Mill and Overlay Project
 - Ridgeview Road Arterial Mill and Overlay Project
 - 127th Street Arterial Mill and Overlay Project
 - Cedar Creek Parkway Arterial Mill and Overlay Project (Alternate)
 - Old 56 Highway Arterial Mill and Overlay Project (Alternate)
 - Local and Collector Street Mill and Overlay Project - Group A
 - Local and Collector Street Mill and Overlay Project - Group B
 - MAQS Micro Surface Project