

2018

**STREET MAINTENANCE
SALES TAX FINANCE
OVERSIGHT COMMITTEE**

ANNUAL REPORT





City of Olathe

2018 Annual Report



Street Maintenance Sales Tax Finance Oversight Committee

Background

On November 12, 2013, the citizens of Olathe approved a 10-year, 3/8 cent Street Maintenance Sales Tax, which the City began collecting on April 1, 2014. The purpose of the sales tax revenue is to finance the cost of repairing, rebuilding, rehabilitating, upgrading, and improving streets in the City of Olathe.

Introduction

On February 18, 2014 the City Council enacted Resolution No. 14-1020 that adopted the charter creating the Street Maintenance Sales Tax Finance Oversight Committee. The Street Maintenance Sales Tax (SMST) Finance Oversight Committee is an advisory body tasked with the annual review of the 3/8 cent sales tax-related revenues and expenditures during its term. The Committee shall consist of seven members, all residents of the City of Olathe, appointed by the City Council. Generally, terms will be limited to four, consecutive two-year terms for a total of eight consecutive years. The Committee's specific duties are as follows:

- Annually review SMST income and expenditure to ensure the SMST revenues were expended consistently with the voter-approved street maintenance sales tax referendum.
- Annually, prepare an independent report to the City Council regarding the revenue and expenditures of the Street Maintenance Sales Tax.

The Committee's function is strictly that of oversight. It should be noted that it is not within the purview of the Committee to make decisions or recommendations on the use of SMST funds, direct staff, or define the scope of a project. These responsibilities remain under the authority of the City Council, City Manager, and professional staff.

Summary of 2018 SMST Revenues and Expenditures

In presenting this annual SMST report on the revenues and expenditures, the Committee undertook a review of documentation provided by the Director of Resource Management, Public Works Deputy Director, and Project Manager. The 2018 SMST grew slightly above 2017 revenues (1.15%) with actual expenditures exceeding the original budget amount by 5%. It is noted that an additional authorization was requested on June 5, 2018 to expend excess fund balance thereby increasing the original SMST authorized budget of \$12,500,000 to \$13,127,000.

2018 Street Preservation Program Revenues & Expenditures Detail

AUTHORIZED SOURCES OF FUNDS SUMMARY		CIP CASH	SMST	Bonds	Grants	Street Excise	Other	TOTAL
Capital Improvement Cash		\$2,600,000						\$2,600,000
CARS					\$2,105,000			\$2,105,000
Street Excise						\$1,500,000		\$1,500,000
Other								\$0
Street Maintenance Sales Tax			\$13,127,000					\$13,127,000
General Obligation Bonds				\$1,055,000				\$1,055,000
Total Sources		\$2,600,000	\$13,127,000	\$1,055,000	\$2,105,000	\$1,500,000		\$20,387,000

ACTUAL ALLOCATION OF FUNDS BY PROJECT								
3-P-000-18	2018 Program	460,154.99					2,712.21	\$462,867.20
3-P-001-18	151 St Arterial Mill & Overlay	16,876.87	740,000.00		706,551.01		228.74	\$1,463,656.62
3-P-002-18	Lone Elm Rd Arterial Mill & Overlay	66,197.73	751,776.52		741,000.00	301,780.00	425.98	\$1,861,180.23
3-P-003-18	College Blvd Arterial Mill & Overlay	79,950.78	1,558,400.20			382,200.00	566.67	\$2,021,117.65
3-P-004-18	143 St Arterial Mill & Overlay	13,511.88	840,000.00				288.29	\$853,800.17
3-P-005-18	Local & Collector Mill & Overlay	1,013,104.05	5,418,593.54					\$6,431,697.59
3-P-006-18	Micro Surface Program	15,702.20	1,946,558.13					\$1,962,260.33
3-P-007-18	Ward Cliff Dr - Lake Olathe	145,000.00	-	1,055,000.00				\$1,200,000.00
3-P-008-18	Street Maint Curb Replacement Program	7,501.50	365,357.96					\$372,859.46
3-P-009-18	Street Maint Crack Sealing Program		91,036.10					\$91,036.10
3-P-011-18	Havencroft Mill & Overlay	\$38,000.00	1,415,277.55					\$1,453,277.55
3-P-001-19	Santa Fe St, Kansas City Rd to I-35	135,000.00						\$135,000.00
3-P-002-19	151st Arterial Mill & Overlay, Ridgeview to OMC Access Rd	240,000.00						\$240,000.00
3-P-003-19	Lone Elm Rd Arterial Mill & Overlay, 119th to Rd North of College	96,000.00						\$96,000.00
3-P-004-19	151st ST Arterial Mill & Overlay, Pflumm Rd to Quivira	73,000.00						\$73,000.00
3-P-005-19	Santa Fe St Arterial Mill & Overlay, Parker to Lakeshore Dr	200,000.00						\$200,000.00
TOTAL ALLOCATION		\$2,600,000.00	\$13,127,000.00	\$1,055,000.00	\$1,447,551.01	\$683,980.00	\$4,221.89	\$18,917,752.90

2018 SMST Fund Balance Summary

	2014 Actual	2015 Actual	2016 Actual	2017 Actual	2018 Actual*
Beginning Fund Balance	\$0	\$2,563,642	\$3,452,256	\$2,695,484	\$2,149,690
Revenue:					
Sales Tax	\$6,736,937	\$9,068,620	\$11,545,236	\$11,510,779	\$11,632,788
Interest Income	\$7,160	\$25,392	\$47,992	\$116,403	\$128,396
Transfer Revenue	\$669,545	\$1,209,550	\$0	\$0	\$0
Total Revenue	\$7,413,642	\$10,303,562	\$11,593,228	\$11,627,182	\$11,761,184
Funds Available	\$7,413,642	\$12,867,204	\$15,045,484	\$14,322,666	\$13,910,874
Expenditures:					
Transfer to Projects	\$4,850,000	\$9,414,948	\$12,350,000	\$12,172,976	\$13,127,000
Ending Fund Balance	<u>\$2,563,642</u>	<u>\$3,452,256</u>	<u>\$2,695,484</u>	<u>\$2,149,690</u>	<u>\$783,874</u>

*Unaudited

Conclusion

The Committee has concluded that:

- The revenue from SMST is being appropriately sequestered and routinely tracked, reported, and monitored.
- The expenditures of SMST funds were utilized in a manner consistent with the referendum passed by the Olathe voters.
- The City's funding of the Street Preservation Program is proceeding in a manner consistent with the commitments made to the voters of Olathe.

Further detailed information about the SMST Finance Oversight Committee's proceedings and the projects in the 2018 Street Preservation Program may be found in the appendix of this report. This report has been researched, assembled and presented in a manner the committee believes is consistent with the stated objectives of Resolution 14-1020.

In accordance with the directives of Resolution 14-1020, the 2018 Annual Report of the Street Maintenance Sales Tax Finance Oversight Committee is respectfully submitted:



Ms Anne Oswald, Chairperson

The Members of the SMST Finance Oversight Committee

Ms Carrie Rezac, Vice Chair

Mr Tom Grady

Mr Steve Smith

Mr Doug Svatos

Ms Becky Feller

Mr Gregg Herbert

City of Olathe
2018 Annual Report
Street Maintenance Sales Tax Finance Oversight Committee

Appendix

- I. SMST Finance Oversight Committee Activities

- II. Project Information
 - a. 151st Arterial Mill & Overlay
 - b. Lone Elm Rd Arterial Mill & Overlay
 - c. College Blvd Arterial Mill & Overlay
 - d. 143 Street Arterial Mill & Overlay
 - e. Local & Collector Mill & Overlay
 - f. Micro Surface Projects
 - g. Ward Cliff Drive (Lake Olathe)
 - h. Curb Replacement Projects
 - i. Crack Sealing Projects
 - j. Havencroft Mill & Overlay
 - k. Design Santa Fe Mill & Overlay, Kansas City Rd to I-35 (2019 project)
 - l. Design 151st Arterial Mill & Overlay, Ridgeview Rd to Olathe Medical Center Access Rd (2019 project)
 - m. Design Lone Elm Rd Arterial Mill & Overlay, 119th St to End of Road north of College (2019 project)
 - n. Design 151st Arterial Mill & Overlay, Pflumm Rd to Quivira Rd (2019 project)
 - o. Design Santa Fe Street Arterial Mill & Overlay, Parker to Lakeshore Dr (2019 project)
 - p. Map of 2018 projects

- III. Resolution No. 18-1055 authorizing the 2018 Street Preservation Program

- IV. Definitions of Street Preservation Project Categories

STREET MAINTENANCE SALES TAX
FINANCE OVERSIGHT COMMITTEE
ACTIVITIES

2018:

- ✓ March 6, 2018 Council appoints Gregg Herbert, Doug Svatos, Anne Oswald, and Carrie Rezac. To SMST Finance Oversight Committee. Svatos and Oswald are reappointed for their third consecutive term; Herbert reappointed for second consecutive term; upon completing an unexpired term Rezac is appointed to her first term. Becky Feller is appointed to fill an unexpired term which will expire 3/1/19. Council appoints Anne Oswald as Chair and Carrie Rezac as Vice Chair.

- ✓ April 5, 2018 Committee reviewed the 2017 financial information and the draft 2017 SMST Finance Oversight Committee's annual report. Received presentation by staff on the 2018 Street Preservation Program. Members in attendance included Chairman Oswald and committee members Herbert, Smith, Rezac, Svatos, and Feller; committee member Grady was absent. Also in attendance were staff members Dianna Wright, Director of Resource Management, Deputy Director of Public Works Celia Duran, Project Coordinator Jeff Beal and Kim Hubbard, Assistant City Clerk.

- ✓ April 17, 2018 Committee Chair Anne Oswald presented the 2017 Annual Financial Report to the City Council.

“151st Street Arterial Mill and Overlay Project”

Project Number: 3-P-001-18	
Project: 151 st Street Arterial Mill and Overlay Project	Project Description: The project included asphalt base repair, 2” depth mill and superpave asphalt overlay, curb and sidewalk replacements, pavement markings, traffic signal detection, traffic signal improvements at Brougham, and limited stormwater rehabilitation to existing curb inlets.
Lane Miles: 8.0	
Project Status: Complete	Design Revenues and Expenditures funded from 2017 Street Preservation and reported in 2017 - \$159,986.56

Revenue Source(s)	Amount	% of Project		Expenditures	Amount	% of Project
CIP Cash	\$176,863.43	10.89%		Design/Engineering	\$147,629.93	9.09%
General Obligation Bonds				Acquisition	\$735.00	.05%
CARS Program	\$706,551.01	43.52%		Construction	\$1,405,646.46	86.57%
Street Maintenance Sales Tax	\$740,000.00	45.58%		Project Management - Inspection	\$63,662.94	3.92%
Storm Water Funds				Utilities:		
Other Revenue:	\$228.74	.01%		Other: Testing & Publications	\$5,968.85	0.37%
Investment Earnings						
Total Revenues	\$1,623,643.18	100%		Total Expenditures	\$1,623,643.18	100%

Before Photo

After Photo



“Lone Elm Road Arterial Mill and Overlay Project”

Project Number: 3-P-002-18	
Project: Lone Elm Road Arterial Mill and Overlay Project (159 th Street to 175 th Street)	Project Description: This project from 159th Street to 175th Street includes turn lanes and traffic signal installation at 167th Street, asphalt base repair, 2" depth milling and superpave asphalt overlay, pavement markings, and stormwater improvements.
Design Consultant: HNTB Corp.	Restoration remaining for completion includes finish grading and sod/seed placement. Completion estimated 5/01/2019
Lane Miles: 4.9	No additional SMST funding transfers will be required.
Project Status: In Construction	Design Revenues and Expenditures funded from 2017 Street Preservation and reported in 2017 - \$239,223.48

Revenue Source(s)	Amount	% 2018 Project Funds	Expenditures	Amount	% of Project
CIP Cash	\$305,421.21	14.54%	Design/Engineering	\$218,889.64	10.42%
General Obligation Bonds			Acquisition	\$135,307.50	6.44%
CARS Program	\$741,000.00	35.28%	Construction	\$1,298,209.40	61.81%
Street Maintenance Sales Tax	\$751,776.52	35.79%	Project Management – Inspection	\$66,403.04	3.16%
Street Excise Tax	\$301,780.00	14.37%	Utilities:	\$113,163.75	5.39%
Other Revenue: Investment Earnings	\$425.98	0.02%	Other: KDHE Permit Fee, Testing, Publications	\$7,214.78	0.34%
Total Revenues	\$2,100,403.71	100%	Total Expenditures	\$1,839,188.11	87.56%

Before Photo



After Photo



“College Boulevard Arterial Mill and Overlay Project”

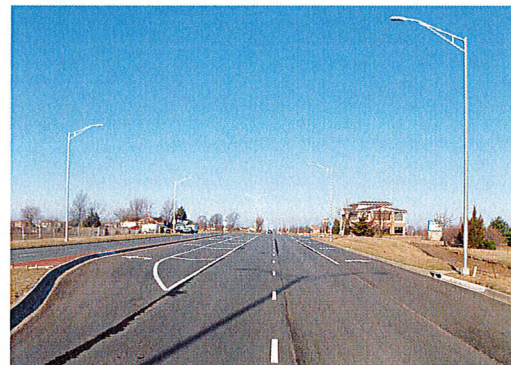
Project Number: 3-P-003-18	
Project: College Boulevard Arterial Mill and Overlay Project (Clare Road to K-7 Highway)	<p>Project Description: This project from Clare Road to K-7 Highway includes traffic signal and street light installation at the K-7 interchange, turn lane installations on the southbound K-7 off-ramp and on College at southbound Clare Road, asphalt base repair, 2" depth milling and superpave asphalt overlay, installation of 8' concrete shared use path, ADA ramps, curb and sidewalk replacements and pavement markings.</p> <p>Remaining construction items concrete overlay at K-7 interchange, bridge deck seal and installation of 8' wide concrete shared use path. Estimated completion date May 30, 2019.</p> <p>Design Revenues and Expenditures funded from 2017 Street Preservation and reported in 2017 - \$99,998.80</p>
Design Consultant: Olsson Assoc.	
Lane Miles: 4.4	
Project Status: In Construction	

Revenue Source(s)	Amount	% of Project		Expenditures	Amount	% of Project
CIP Cash	\$179,949.58	8.48%		Design/Engineering	\$158,757.36	7.48%
General Obligation Bonds				Acquisition		
CARS Program				Construction	931,872.55	43.93%
Street Maintenance Sales Tax	\$1,558,400.20	73.47%		Project Management – Inspection	\$41,237.21	1.94%
Excise Tax	\$382,200.00	18.02%		Utilities:		
Other Revenue: Interest	\$566.67	0.03%		Other: Testing, Publications	\$1,947.00	.09%
Total Revenues	\$2,121,116.45	100%		Total Expenditures	\$1,133,814.12	53.44%

Before Photo



After Photo



“143rd Street Arterial Mill and Overlay Project”

Project Number: 3-P-004-18	
Project: 143 rd Street Arterial Mill and Overlay Project (Black Bob Road to Pflumm Road)	Project Description: This project from Black Bob Road to Pflumm Road includes asphalt base repair, 2" depth milling and superpave asphalt overlay, stormwater improvements, ADA ramps, curb and sidewalk replacements, installation of 8' concrete shared use path, pavement markings and traffic signal detection.
Design Consultant: HNTB Corp.	
Lane Miles: 2.0	
Project Status: Complete	Design Revenues and Expenditures funded from 2017 Street Preservation and reported in 2017 - \$93,222.61

Revenue Source(s)	Amount	% of Project		Expenditures	Amount	% of Project
CIP Cash	\$106,734.49	11.27%		Design/Engineering	\$86,491.80	9.13%
General Obligation Bonds				Acquisition		
CARS Program				Construction	\$820,134.51	86.60%
Street Maintenance Sales Tax	\$840,000.00	88.70%		Project Management – Inspection	\$36,365.57	3.84%
Storm Water Funds				Utilities:		
Other Revenue: Interest	\$288.29	0.03%		Other: Publications Testing,	\$4030.90	0.43%
Total Revenues	\$947,022.78	100%		Total Expenditures	\$947,022.78	100%

Before Photo



After Photo



“2018 Local and Collector Street Mill and Overlay Project”

Project Number: 3-P-005-18	
Project: 2018 Local and Collector Street Mill & Overlay Project	Project Description: The project includes full depth asphalt base repair, 2” depth mill and asphalt overlay, curb and sidewalk replacements, and ADA sidewalk ramps on approximately 96 local and collector streets. The project also included the base repair for the streets scheduled as part of the 2019 Local and Collector Street Mill & Overlay. Moving forward the next years base repair will be completed in the year prior to the contracted work.
Lane Miles: 32.1	
Project Status: Complete	

Revenue Source(s)	Amount	% of Project		Expenditures	Amount	% of Project
CIP Cash	\$1,013,104.05	15.75%		Design/Engineering	\$9,201.80	0.14%
General Obligation Bonds				Acquisition		
CARS Program				Construction	\$6,296,732.33	97.90%
Street Maintenance Sales Tax	\$5,418,593.54	84.25%		Project Management - Inspection	\$93,536.28	1.45%
Storm Water Funds				Utilities: water relocate	\$14,553.40	0.23%
Other Revenue				Other: Testing & Publications, Towing	\$17,673.78	0.28%
Total Revenues	\$6,431,697.59	100%		Total Expenditures	\$6,431,697.59	100%

Before Photo



After Photo



“2018 MAQS Micro Surface Project”

Project Number: 3-P-006-18	
Project: 2018 MAQS Micro Surface Project	Project Description: The project includes application of a Type II Modified Aggregate Quickset Surface (MAQS) Micro Surface on the existing street surface and replacement of pavement markings on approximately 179 streets.
Lane Miles: 63.8	
Project Status: Complete	

Revenue Source(s)	Amount	% of Project		Expenditures	Amount	% of Project
CIP Cash	\$15,702.20	0.8%		Design/Engineering		
General Obligation Bonds				Acquisition		
CARS Program				Construction	\$1,946,558.15	99.20%
Street Maintenance Sales Tax	\$1,946,558.13	99.2%		Project Management - Inspection	\$10,865.59	0.55%
Storm Water Funds				Utilities:		
Other Revenue				Other: Testing & Publications	\$4,836.59	0.25%
Total Revenues	\$1,962,260.33	100%		Total Expenditures	\$1,962,260.33	100%

Before Photo

After Photo



“Street Maintenance Curb Replacement”

Project Number: 3-P-008-18	
Project: Street Maintenance Curb Replacement	<p>Project Description: Removal and replacement of existing concrete curb and gutter on local and collector streets. The project completed 23,794 Linear Feet of deteriorated and broken concrete curb spot location replacement throughout the city.</p> <p>Street Preservation funding is used to pay for all materials related to concrete curb replacement completed by the Street Maintenance Division of the Public Works Department.</p>
Contractor: Street Maintenance Division	
Linear Feet: 23,794	
Project Status: Complete	

Revenue Source(s)	Amount	% of Project		Expenditures	Amount	% of Project
CIP Cash	\$7,501.50	2.01%		Design/Engineering		
General Obligation Bonds				Acquisition		
CARS Program				Construction	\$372,859.46	100%
<i>Street Maintenance Sales Tax</i>	\$365,357.96	97.99%		Project Management - Inspection		
Storm Water Funds				Utilities		
Other Revenue				Other: Testing & Publications		
Total Revenues	\$372,859.46	100%		Total Expenditures	\$372,859.46	100%

“Street Maintenance Crack Sealing”

Project Number: 3-P-009-18	
Project: Street Maintenance Crack Sealing	<p>Project Description: Crack Sealing of pavement cracks up to a width of ¼ inch with rubberized asphalt sealant to prevent damage to base asphalt. The project also includes a wide crack sealant on cracks which have become wider than ¼ inch. Crack sealing is the first step of an efficient street preservation program.</p> <p>Materials for wide crack sealing of transverse cracks and concrete joints are also included in this project.</p> <p>SMST funding is used to pay for materials related to crack sealing completed by the Street Maintenance Division of the Public Works Department.</p>
Contractor: Street Maintenance Division	
Lane Miles: 250 Lane Miles	
Project Status: Complete	

Revenue Source(s)	Amount	% of Project		Expenditures	Amount	% of Project
CIP Cash				Design/Engineering		
General Obligation Bonds				Acquisition		
CARS Program				Construction	\$91,036.10	100%
Street Maintenance Sales Tax	\$91,036.10	100%		Project Management - Inspection		
Storm Water Funds				Utilities		
Other Revenue				Other: Testing & Publications		
Total Revenues	\$91,036.10	100%		Total Expenditures	\$91,036.10	100%

Before

After

“Havencroft Mill and Overlay Project”

Project Number: 3-P-011-18	
Project: Havencroft Mill and Overlay Project Lane Miles: 5.3 Project Status: Complete	Project Description: The project included 2” depth mill and asphalt overlay, full depth asphalt base repairs, curb and sidewalk replacements, and ADA sidewalk ramps on approximately 15 residential streets.

Revenue Source(s)	Amount	% of Project		Expenditures	Amount	% of Project
CIP Cash	\$38,000.00	2.61%		Design/Engineering		
General Obligation Bonds				Acquisition		
CARS Program				Construction	\$1,415,028.79	97.37%
Street Maintenance Sales Tax	\$1,415,277.55	97.39%		Project Management - Inspection	\$37,595.00	2.59%
Storm Water Funds				Utilities: Streetlights		
Other Revenue				Other: Testing & Publications	\$653.76	.04%
Total Revenues	\$1,453,277.55	100%		Total Expenditures	\$1,453,277.55	100%

Before Photo



After Photo



“Santa Fe Street Arterial Mill and Overlay Project”

Project Number: 3-P-001-19	
Project: Santa Fe Street Arterial Mill & Overlay, Kansas City Road to I-35	Project Description: The project includes asphalt base repair, 2” depth mill and superpave asphalt overlay, curb and sidewalk replacements, pavement markings, traffic signal detection and stormwater rehabilitation to existing pipes and curb inlets.
Lane Miles: 5.25	
Project Status: Design	

Revenue Source(s)	Amount	% of Project		Obligations & Expenditures	Amount	% of Project
CIP Cash	\$135,000.00	%		Design/Engineering	\$100,858.00	%
General Obligation Bonds				Acquisition		
CARS Program				Construction	\$	%
Street Maintenance Sales Tax	\$	%		Project Management - Inspection	\$34,142.00	%
Storm Water Funds				Utilities		
Other Revenue				Other: Testing & Publications	\$	%
Total Revenues	\$135,000	%		Total Obligations & Expenditures	\$135,000.00	%

Before Photo



After Photo



“151st Arterial Mill and Overlay Project”

Project Number: 3-P-002-19	
Project: 151 st Street Arterial Mill and Overlay, Ridgeview Road to Olathe Medical Center Access Road	Project Description: The project includes asphalt base repair, 3.5” depth concrete milling and asphalt overlay with a glassmat hybrid paving mat barrier, removal of existing deteriorated concrete bridge approaches at the BNSF rail bridge and I-35/US169 bridge, curb and sidewalk replacements, pavement markings, traffic signal detection and stormwater rehabilitation to existing pipes and curb inlets.
Lane Miles: 6.0	
Project Status: Design	

Revenue Source(s)	Amount	% of Project		Obligations & Expenditures	Amount	% of Project
CIP Cash	\$240,000.00	%		Design/Engineering	\$210,996.00	%
General Obligation Bonds				Acquisition		
CARS Program				Construction	\$	%
Street Maintenance Sales Tax	\$	%		Project Management - Inspection	\$29,004.00	%
Storm Water Funds				Utilities		
Other Revenue				Other: Testing & Publications	\$	%
Total Revenues	\$240,000.00	%		Total Obligations & Expenditures	\$240,000.00	%

Before Photo



After Photo

“Lone Elm Road Arterial Mill and Overlay Project”

Project Number: 3-P-003-19	
Project: Lone Elm Road Arterial Mill & Overlay, 119 th Street to End of Road North of College	Project Description: The project includes asphalt base repair, 2” depth mill and superpave asphalt overlay, curb and sidewalk replacements, replacing existing 5’ wide concrete sidewalk with an 8’ wide concrete shared use path on the east side of the road, pavement markings and traffic signal detection
Lane Miles: 4.0	
Project Status: Design	

Revenue Source(s)	Amount	% of Project		Obligations & Expenditures	Amount	% of Project
CIP Cash	\$96,000.00	%		Design/Engineering	\$85,745.00	%
General Obligation Bonds				Acquisition		
CARS Program				Construction	\$	%
Street Maintenance Sales Tax	\$	%		Project Management - Inspection	\$10,255.00	%
Storm Water Funds				Utilities		
Other Revenue				Other: Testing & Publications	\$	%
Total Revenues	\$135,000.00	%		Total Obligations & Expenditures	\$135,000.00	%

Before Photo

After Photo



“151st Street Arterial Mill and Overlay Project”

Project Number: 3-P-004-19	
Project: 151 st Street, Pflumm Road to Quivira Road	Project Description: This is a joint project with the City of Overland Park where the design and construction are managed by the city of Olathe. Overland Park funds the design and construction within their city limits by reimbursement agreement with the City of Olathe. The project includes asphalt base repair, 2” depth mill and superpave asphalt overlay, curb and sidewalk replacements, replacing pavement markings and traffic signal detection.
Lane Miles: 4.0	
Project Status: Design	

Revenue Source(s)	Amount	% of Project		Obligations & Expenditures	Amount	% of Project
CIP Cash	\$73,000.00	%		Design/Engineering	\$63,000.00	%
General Obligation Bonds				Acquisition		
CARS Program				Construction	\$	%
<i>Street Maintenance Sales Tax</i>	\$	%		Project Management - Inspection	\$10,000.00	%
Storm Water Funds				Utilities		
Other Revenue				Other: Testing & Publications	\$	%
Total Revenues	\$73,000.00	%		Total Obligations & Expenditures	\$73,000.00	%

Before Photo



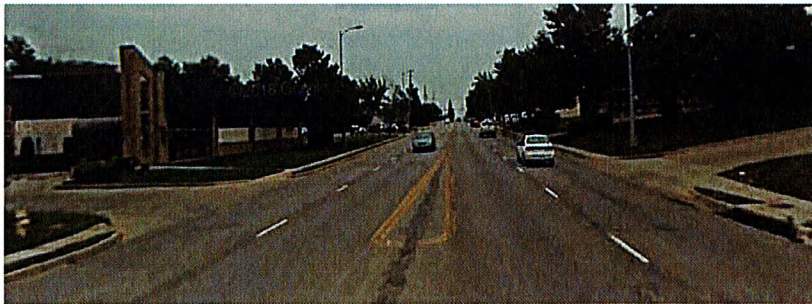
After Photo

“Santa Fe Street Arterial Mill and Overlay Project”

Project Number: 3-P-005-19	
Project: Santa Fe Street, from Parker Street to Lakeshore Drive	Project Description: The project includes asphalt base repair, 2” depth mill and superpave asphalt overlay, curb and sidewalk replacements, replacing pavement marking, added pavement markings for on street bike lanes, and traffic signal detection.
Lane Miles: 9.0	
Project Status: Design	

Revenue Source(s)	Amount	% of Project		Obligations & Expenditures	Amount	% of Project
CIP Cash	\$200,000.00	%		Design/Engineering	\$164,547.00	%
General Obligation Bonds				Acquisition		
CARS Program				Construction	\$	%
Street Maintenance Sales Tax	\$	%		Project Management - Inspection	\$35,453.00	%
Storm Water Funds				Utilities		
Other Revenue				Other: Testing & Publications	\$	%
Total Revenues	\$200,000.00	%		Total Obligations & Expenditures	\$200,000.00	%

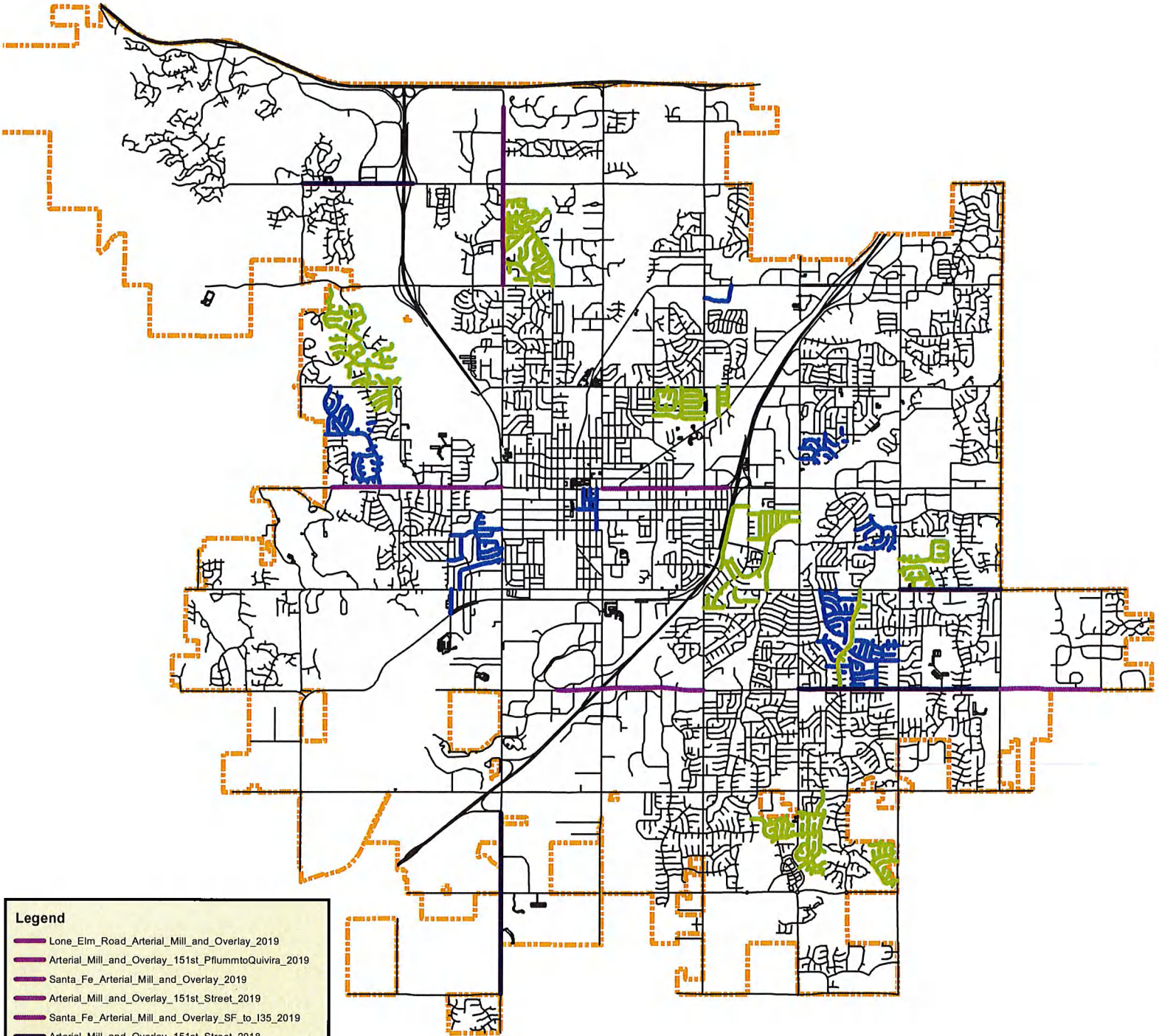
Before Photo



After Photo



2018 SMST Street Preservation Locations



Legend

- Lone Elm Road Arterial Mill and Overlay 2019
- Arterial Mill and Overlay 151st Pflumm to Quivira 2019
- Santa Fe Arterial Mill and Overlay 2019
- Arterial Mill and Overlay 151st Street 2019
- Santa Fe Arterial Mill and Overlay SF to I35 2019
- Arterial Mill and Overlay 151st Street 2018
- Lone Elm Road Arterial Mill and Overlay Project 2018
- College Boulevard Arterial Mill and Overlay 2018
- Arterial Mill and Overlay 143rd St BB to Pflumm 2018
- Micro Surface 2018
- Local and Collector Mill and Overlay 2018
- Havencroft Mill and Overlay 2018
- Raintree and Devonshire Mill and Overlay 2018
- Olathe Boundary

RESOLUTION NO. 18-1055

A RESOLUTION AUTHORIZING THE 2018 STREET PRESERVATION PROGRAM, PN 3-P-000-18, AND REPEALING RESOLUTION NO. 18-1009.

BE IT RESOLVED BY THE GOVERNING BODY OF THE CITY OF OLATHE, KANSAS:

SECTION ONE: Pursuant to the authority of Charter Ordinance No. 74 of the City, the Governing Body hereby authorizes the 2018 Street Preservation Program. Such program shall rehabilitate the following streets in the City of Olathe:

151st Street Arterial Mill and Overlay Project – Mur-Len Road to Pflumm Road. The project funding consists of CIP Fund Cash, Johnson County Assistance Road System (CARS) Funds, and Street Maintenance Sales Tax Cash. The project includes asphalt base repair, 2" depth milling and superpave asphalt overlay, median modifications, ADA ramps, curb and sidewalk replacements, pavement markings, traffic signal detection, traffic signal improvements at Brougham, and stormwater drainage improvements.

Lone Elm Road Arterial Mill and Overlay – 159th Street to 175th Street. The project funding consists of CIP Fund Cash, Johnson County Assistance Road System (CARS) Funds, and Street Maintenance Sales Tax Cash. The project includes turn lane and traffic signal installation at 167th Street, asphalt base repair, 2" depth milling and superpave asphalt overlay, pavement markings, and stormwater drainage improvements.

College Boulevard Arterial Mill and Overlay – Claire Road to K-7 Highway. The project funding consists of CIP Fund Cash, Street Maintenance Sales Tax Cash and Street Excise Tax Cash. The project includes traffic signal and street light installation at the K-7 interchange, turn lane installation on the southbound K-7 off-ramp, asphalt base repair, 2" depth milling and superpave asphalt overlay, installation of 8' concrete shared use path, ADA ramps, curb and sidewalk replacements and pavement markings.

143rd Street Arterial Mill and Overlay – Black Bob Road to Pflumm Road. The project funding consists of CIP Fund Cash and Street Maintenance Sales Tax Cash. The project includes asphalt base repair, 2" depth milling and superpave asphalt overlay, stormwater improvements, ADA ramps, curb and sidewalk replacements, installation of 8' concrete shared use path, pavement markings and traffic signal detection.

Ward Cliff Drive Street Improvements – Dennis Avenue to Santa Fe Street. The project funding consists of CIP Fund Cash and Street Maintenance Sales Tax Cash. The project includes removal and replacement of approximately ¾-miles of asphalt pavement along Ward Cliff Drive as part of the Lake Olathe Improvements.

SECTION TWO: The cost for completing the projects listed in Section One is \$20,387,000. Funds to pay for the projects shall come from the following sources:

Street Maintenance Sales Tax	\$13,127,000
General Obligation Bonds	\$ 1,055,000
CIP Fund	\$ 2,600,000
Johnson County Assistance Road System (CARS)	\$ 2,105,000
Street Excise Tax	<u>\$ 1,500,000</u>
TOTAL	\$20,387,000

SECTION THREE: Pursuant to the authority of Charter Ordinance No. 74, the Governing Body hereby authorizes the issuance of not to exceed \$1,055,000 of general obligation bonds, all exclusive of issuance costs and interest on any temporary financing.

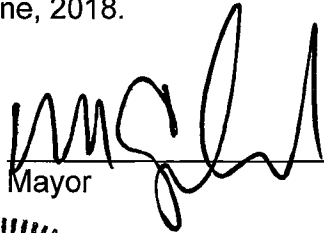
SECTION FOUR: The City intends to reimburse itself for capital expenditures made on or after the date which is 60 days before the date of this Resolution in connection with the project, pursuant to Treasury Regulation § 1.150-2, with the proceeds of bonds and/or notes in the maximum principal amount of \$1,055,000 exclusive of issuance costs and any interest costs for temporary financing.

SECTION FIVE: Resolution No. 18-1009 is hereby repealed.

SECTION SIX: This Resolution shall take effect immediately.


ADOPTED by the Governing Body this 5th day of June, 2018.

SIGNED by the Mayor this 5th day of June, 2018.



Mayor

ATTEST:

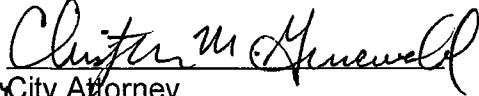


City Clerk

(SEAL)



APPROVED AS TO FORM:



Deputy City Attorney

West 147th Street	147th Street to South End Cul-de-sac (East)
North Mesquite Street	Mesquite Street to Northwest End Cul-de-sac
North Pinon Street	Pinon Street to East End Cul-de-sac (North)
North Pinon Street	Pinon Street to East End Cul-de-sac (Middle)
North Pinon Street	Pinon Street to East End Cul-de-sac (South)
West Post Oak Road	Post Oak Road to South End Cul-de-sac (West)
West Post Oak Road	Post Oak Road to South End Cul-de-sac (East)
South Kaw Street	Kaw to Northeast End Cul-de-sac
West 139th Terrace	139th Terrace to North End Cul-de-sac
South Kaw Street	Kaw to East End Cul-de-sac
South Kaw Drive	147th Terrace to 147th Street
South Kaw Street	Blackfoot to 139th Street
South Kaw Street	139th Street to South End Cul-de-sac
South Blackfoot Drive	138th Street to Brougham
South Blackfoot Drive	147th Terrace to 147th Street
South Blackfoot Drive	151st Street to North End Cul-de-sac
West 139th Terrace	139th Terrace to South End Cul-de-sac
West Valley Road	Elm Terrace to Wabash Terrace
South Valley Road	Alta to North End Cul-de-sac
North Lennox Street	119th Street to 120th Street
West Cedar Street	Valley to East End Cul-de-sac
West Cedar Terrace	Valley Road to East End Cul-de-sac
North Cedarcrest Drive	Persimmon to North End Dead End
South Wabash Court	Wabash to South End Cul-de-sac
West Wabash Street	Valley to Wabash Terrace
West Wabash Terrace	Parker to Valley Road
South Water Street	Santa Fe to Loula
North Mesa Street	Persimmon to Overlook
North Mesquite Street	Surrey to Post Oak
West Mesquite Terrace	Mesquite to Southwest End Dead End
South Navaho Drive	147th Street to 147th Terrace
South Navaho Drive	148th Terrace to South End Cul-de-sac
South Navaho Drive	150th Terrace to 151st Street
West Elm Street	Valley to Parker
West Elm Terrace	Valley to Montclair
West Elm Terrace	Elm to Valley
South Oscar Street	Elm to Ferrel
North Overlook Drive	Persimmon to Arroyo
North Canyon Drive	Canyon to Northwest End Cul-de-sac
West Persimmon Circle	Persimmon to West End Cul-de-sac
North Persimmon Drive	Persimmon to East End Cul-de-sac
North Persimmon Drive	West End Cul-de-sac to East End Cul-de-sac
North Persimmon Drive	Santa Fe to 131st Street

**Alternate Streets
2018 Local and Collector Street Mill and Overlay**

STREET	FROM/TO
West Sheridan Street	Ferrel to Parker
West Sheridan Street	Ferrel to Dennis
North Singletree Street	Persimmon to 131st Street
North Sumac Street	131st Street to North End Dead End
South Summertree Lane	Brougham to North End Cul-de-sac
West 131st Street	Persimmon to West End Dead End
West 131st Terrace	Trenton to Raintree
West 131st Terrace	Brougham to West End Cul-de-sac
West 132nd Street	Mur-Len to East End Cul-de-sac
West 132nd Street	Trenton to Southeast End Dead End
West 132nd Court	132nd Street to Northeast End Cul-de-sac
West 132nd Terrace	Brougham to Northwest End Cul-de-sac
West 132nd Street	132nd to Locust (West) and Trenton (East)
West 133rd Street	Mur-Len to Locust
West 133rd Street	Locust to both Southeast End Cul-de-sacs
West 147th Terrace	Locust to Brougham
West 132nd Street	132nd Street to North End Cul-de-sac
West 132nd Circle	132nd Circle to Northwest End Cul-de-sac
West Sheridan Street	Sheridan to South End Cul-de-sac
West 147th Terrace	147th Terrace to Southwest End
West 147th Terrace	147th Terrace to North End Cul-de-sac
South Saddletree Lane	147th Terrace to Southwest End Cul-de-sac
South Trenton Street	Indian Creek Parkway to 132nd Street
South Locust Street	132nd Street to 133rd Street
South Cottonwood Drive	Indian Creek Parkway to North End Cul-de-sac
West Ferrel Drive	Oscar to Montclair
South Summit Street	North End Cul-de-sac to South End Cul-de-sac
South Summit Street	131st Street to North End Cul-de-sac
South Summit Street	131st Street to South End Cul-de-sac
West 128th Street	Gallery to Greenwood
West 129th Street	Pflumm to Widmer
West 129th Street	Widmer to Rene
West 129th Terrace	Widmer to Northwest End Cul-de-sac
West 129th Circle	Widmer to West End Cul-de-sac
West 129th Place	129th Street to West End Cul-de-sac
West 131st Street	Pflumm to Widmer
West 127th Terrace	Gallery to West End Cul-de-sac
South Widmer Street	130th Terrace to 775' North
South Widmer Street	Widmer to West End Cul-de-sac

Local and Collector Street Micro Surface Project

STREET	FROM/TO
South Scarborough Street	Willow to Cedar
North Jan-Mar Drive	Kansas City Road to Harold
South Stratford Road	Sheridan to Winterbrooke
South Summertree Lane	163rd Terrace to North End Cul-de-sac
East Johnston Street	Cothrell to Ridgeview
North Sunset Drive	Harold to Cothrell
East Sunvale Terrace	Sunvale Drive to Ridgeview
East Sylvia Street	Mart-Way to Jan-Mar
West 112th Terrace	Lone Elm to Theden
West 113th Place	114th Street to 114th Place
West 114th Street	Lone Elm to 114th Terrace
West 114th Terrace	113th Place to Southwest End Cul-de-sac
West 114th Place	Iowa to Northeast End Dead End
West 115th Street	Iowa to Deer Run
South Alcan Street	139th Terrace to 140th Terrace
West 115th Terrace	Deer Run to 116th Street
West 116th Street	115th Terrace to Lone Elm
West 116th Street	Webster to Southwest End Cul-de-sac
West 116th Terrace	117th Street to Iowa
West 117th Street	Lone Elm to Iowa
South Alden Court	142nd to North End Cul-de-sac
South Alden Court	140th Terrace to Northwest End Cul-de-sac
West 117th Terrace	117th Street to 117th Street
West 118th Terrace	117th Street to Southeast End Cul-de-sac
West 118th Terrace	Monroe to West End Dead End
West 120th Street	Barth to West End Cul-de-sac
West 121st Street	Clare to Solomon
West 121st Street	Sunray to both West End Cul-de-sacs
West 121st Terrace	Solomon to East End Cul-de-sac
West 123rd Terrace	Clare to both West End Cul-de-sacs
West 124th Street	Clare to West End Cul-de-sac
West 124th Terrace	Clare to West End Dead End
West 124th Court	125th Street to 125th Street
West 124th Place	Solomon to both Northeast End Cul-de-sacs
West 125th Street	Clare to East End Cul-de-sac
West 126th Street	East to West End Cul-de-sacs

South Dunraven Street	Southwest to Northwest End Cul-de-sacs
South Redbud Lane	114th Place to North End Dead End
South Twilight Lane	163rd Terrace to North End Dead End
West 163rd Terrace	Twilight to West End Cul-de-sac
South Ryckert Street	Ryckert to Southeast End Cul-de-sac
South Ryckert Street	Ryckert Cul-de-sac to Ryckert Cul-de-sac
South Ryckert Street	Ryckert to South End Cul-de-sac
West 112th Terrace	112th Terrace to Northwest End Cul-de-sac
South Whitehall Street	Whitehall to Southwest End Cul-de-sac
East Nelson Circle	Nelson Circle to Nelson Circle
North Blake Street	Harold to Elizabeth
North Blake Street	Elizabeth to South End Cul-de-sac
South Bradley Drive	161st Street to South End Cul-de-sac
South Brookfield Street	161st Street to Summertree
South Brougham Drive	143rd Street to 151st Street
West 118th Terrace	118th Terrace to Southwest End Cul-de-sac
East Layton Drive	Church to Hunter
East Leona Street	Jan-Mar to Mart-Way
South Lindenwood Drive	Cedar to Willow
South Lindenwood Drive	Sheridan to College Way
South Locust Street	159th Street to 161st Street
South Locust Street	161st Street to South End Cul-de-sac
South Bradley Drive	South End Cul-de-sac to North End Cul-de-sac
South Cardinal Drive	Cedar to Drury
East Cedar Street	Clairborne to Mur-Len
North Church Street	Elizabeth to Layton
South Clairborne Road	Sheridan to Sunvale Terrace
South Longview Street	116th Terrace to Iowa
South Constance Court	North to South End Cul-de-sacs
East Cothrell Street	Ridgeview to Johnston
East Cothrell Street	Nelson to Johnston
South Darnell Court	142nd Street to North End Cul-de-sac
South Darnell Court	140th Terrace to Northeast End Cul-de-sac
East Willow Drive	Mur-Len to College Way
East Willow Drive	College Way to Rogers
North Mahaffie Street	Elizabeth to South End Cul-de-sac
South Winterbrooke Drive	Cedar to Willow
North Mart-Way Drive	Kansas City Road to Harold
South Meadowbrook Lane	Drury to Cedar
South Medford Circle	Willow to Southwest End Cul-de-sac
South Darnell Street	143rd Street to 142nd Street
South Monroe Street	119th Street to 117th Street
South Mullen Street	139th Terrace to 140th Terrace

South Twilight Lane
South Monroe Street
South Rogers Road
South Elmridge Street
South Marion Street
South Kimble Street
South Deer Run Street
South Deer Run Street
South Deer Run Street
South Marais Drive
West 147th Terrace
South Brownridge Street

164th Terrace to North End Dead End
Iowa to Marion
Clairborne to Sheridan
161st Street to North End Cul-de-sac
117th Street to North End Cul-de-sac
165th Street to Southwest End Dead End
115th Street to Brownridge
117th Street to South End Dead End
West 115th Terrace to South End
Lackman to Northwest End Dead End
Brougham to Southeast End Cul-de-sac
115th Street North to Pavement Change

Havencroft Mill and Overlay Project Streets

STREET	FROM/TO
South Summertree Lane	143rd Street to 145th Terrace
South Ashton Street	145th Terrace to North End Cul-de-sac
West 143rd Terrace	Summertree to 144th Street
West 144th Street	Cottonwood to Brougham
West 144th Street	Summertree to Cottonwood
West 145th Terrace	Village to Brougham
West 146th Street	Brougham to Chalet
South Village Drive	Village to North End Cul-de-sac
South Village Drive	Summertree to Chur
South Village Drive	Chur to South Chalet
South Chalet Drive	145th Terrace to North End Cul-de-sac
South Chalet Drive	Village to Southeast End Cul-de-sac
West Chur Street	Village to East End Cul-de-sac
South Cottonwood Drive	145th Terrace to 144th Street
South Cottonwood Drive	143rd Street to 143rd Terrace

Definitions of Street Preservation Project Categories

Crack Seal and Wide Crack Patch Seal



Crack seal is a preventative maintenance process consisting of sealing the cracks in the pavement with a rubberized sealant or asphalt sealing product to prevent the moisture from penetrating into the base and subgrade material. The joint between the asphalt surface and the concrete curb and gutter is also sealed. Wide Crack Patch

Seal is used on larger cracks that have also developed minor depressions. Usually along transverse cracks that are opened to a width wider than one half inch. The wide crack material incorporates a fine aggregate material to allow filling of larger cracks and depressions.

Target streets are Good or better condition.

Crack Seal is completed by Contractors and City Street Maintenance Crews depending on the scope of the project.

Resident Impact: Minimum, street open to traffic during work.

Full-Depth Repair (FDR)

If base or subgrade failure has occurred because of severe cracks or settlements of a pavement section, that pavement section needs to be replaced or repaired full-depth (typically 8 to 10 inches) to



a condition equal to or better than the surrounding pavement sections.

Full depth repairs are completed by Contractors and City Street Maintenance Crews depending on the scope of the project.

Resident Impact: Minimum, street open to traffic during work.

Micro Surface

Micro Surface is a mixture of an asphaltic oil and water (emulsion) and crushed rock aggregate that is spread over the street at about ¼ to 3/8-inch



thickness. The micro "cures" when the water evaporates leaving only the asphalt to coat the crushed rock. The asphalt acts as a binder to hold the slurry together and bonds to the existing pavement. The Micro Surface protects the existing street surface from the effects of aging and oxidizing and increases the skid resistance. Micro

Surface typically requires a crack seal on cracks 3/16 inch and larger.

All Micro Surface Streets are crack sealed prior to surface placement. Prep work may also include a minor amount of Full Depth Repair or surface replacement areas depending upon conditions; however, Micro Surface is typically used on streets that are in good to excellent condition. In general, a Micro Surface does not extend the life cycle of the pavement; it helps preserve the remaining utility and original design life of the pavement. Micro Surface is strictly a preventative maintenance operation.

Micro Surface projects are contracted.

Resident Impact: Medium – 2 to 4-hour cure time with street completely closed to traffic.

Ultrathin Bonded Asphalt Surface (UBAS)

An Ultrathin Bonded Asphalt Surface is an overlay that consists of a single layer of hot mix asphaltic concrete (minimum of 3/4 inch thick) used to level, waterproof, and restore the original street shape and ride. Edge Milling may be utilized to maintain the surface edge at the curb and gutter. Although it is not intended to add a substantial amount of structural value to the pavement section, it is a minor structural improvement, nonetheless. All UBAS streets are crack sealed prior to surface placement. Prep work may also include small amounts of isolated Full Depth Repair.

UBAS projects are contracted.

Resident Impact: medium – 4 to 8 hours street closed to traffic until pavement is placed, compacted and cooled.

Asphalt Mill and Overlay

Asphalt Mill and Overlay is rehabilitation which typically includes less than 30% FDR, limited curb and gutter repairs, ADA required sidewalk ramp improvements and a 2" depth structural mill and overlay.



Asphalt Mill and Overlay projects are contracted. FDR Base Repair may be completed by Street Maintenance crews prior to contractor construction.

Resident Impact: medium – street remains open to residents during concrete work with access limited at times, 1 to 2 days paving requires 4 to 8 hours street closed to traffic until pavement is placed, compacted and cooled.

Mill and Overlay Major Repair

Mill and Overlay Major Repair is a rehabilitation which typically includes greater than 30% but less than 70% FDR, extensive curb and gutter replacement, and a structural asphalt overlay usually 2" or more.

Mill and Overlay Major Repair projects are contracted. FDR Base Repair may be

completed by Street Maintenance crews prior to contractor construction.



Resident Impact: medium – street remains open to residents during concrete work, larger sections of FDR may require street closure at times, 1 to 2 days surface paving requires 4 to 8 hours street closed to traffic until pavement is placed, compacted and cooled.

Curb & Gutter Replacement



Concrete curb & gutter replacement if needed is completed by the contractor on all Street Preservation Asphalt Mill and Overlay projects. Curb Only Replacement Projects will usually be completed by Street Maintenance.

Resident Impact: medium – street remains open to residents during concrete work; however, access to residential drives may be limited at times.

Reconstruction

Reconstruction is the process of replacing the entire street within the existing right-of-way and consists of subgrade improvements, replacing the full depth asphalt or concrete pavement section, all the curb and gutter, storm sewer, sidewalks and ADA Sidewalk ramps. Street reconstruction can incorporate moderate changes to the street alignment, profile, cross section, and roadway width.

Resident Impact: Major, project duration varies depending on length of street. The street is usually closed to thru traffic with access provided to residents and emergency personnel only. Resident access is usually restricted during working hours and during certain construction phases.

Reconstruction projects are contracted.

