

2017

**STREET MAINTENANCE
SALES TAX FINANCE
OVERSIGHT COMMITTEE**

ANNUAL REPORT





City of Olathe

2017 Annual Report



Street Maintenance Sales Tax Finance Oversight Committee

Background

On November 12, 2013, the citizens of Olathe approved a 10-year, 3/8 cent Street Maintenance Sales Tax, which the City began collecting on April 1, 2014. The purpose of the sales tax revenue is to finance the cost of repairing, rebuilding, rehabilitating, upgrading, and improving streets in the City of Olathe.

Introduction

On February 18, 2014 the City Council enacted Resolution No. 14-1020 that adopted the charter creating the Street Maintenance Sales Tax Finance Oversight Committee. The Street Maintenance Sales Tax (SMST) Finance Oversight Committee is an advisory body tasked with the annual review of the 3/8 cent sales tax-related revenues and expenditures during its term. The Committee shall consist of seven members, all residents of the City of Olathe, appointed by the City Council. Generally, terms will be limited to four, consecutive two-year terms for a total of eight consecutive years. The Committee's specific duties are as follows:

- Annually review SMST income and expenditure to ensure the SMST revenues were expended consistently with the voter-approved street maintenance sales tax referendum.
- Annually, prepare an independent report to the City Council regarding the revenue and expenditures of the Street Maintenance Sales Tax.

The Committee's function is strictly that of oversight. It should be noted that it is not within the purview of the Committee to make decisions or recommendations on the use of SMST funds, direct staff, or define the scope of a project. These responsibilities remain under the authority of the City Council, City Manager, and professional staff.

Summary of 2017 SMST Revenues and Expenditures

In presenting this annual SMST report on the revenues and expenditures, the Committee undertook a review of documentation provided by the Director of Resource Management, Public Works Deputy Director, and Project Manager. The 2017 SMST fell slightly below 2016 revenues with actual expenditures exceeding the original budget amount by 1.4%. It is noted that an additional authorization was requested to expend excess fund balance and due to the changes in scope of the Woodland project which occurred later in the year \$627,023 of this additional request was not utilized. The timing of the change prevented the reallocation of the funds to another project, these funds will be included in the 2018 program.

2017 Street Preservation Program Revenues & Expenditures Detail

AUTHORIZED SOURCES OF FUNDS SUMMARY		CIP CASH	SMST	Bonds	Grants	OTHER	TOTAL
Capital Improvement Cash		\$2,400,000					\$2,400,000
CARS					\$2,125,000		\$2,125,000
Street Excise						\$225,000	\$225,000
Other							\$0
Street Maintenance Sales Tax			\$12,800,000				\$12,800,000
General Obligation Bonds				\$1,000,000			\$1,000,000
Total Sources		\$2,400,000	\$12,800,000	\$1,000,000	\$2,125,000	\$225,000	\$18,550,000

ACTUAL ALLOCATION OF FUNDS BY PROJECT							
PN 3-P-000-17	Street Preservation	\$90,658.66				\$3,364.35	\$94,023.01
PN 3-P-001-17	Dennis Avenue Arterial M&O (Parker to Ridgeview)	\$145,687.00	\$621,403.92		\$620,228.91	\$481.67	\$1,387,801.50
PN 3-P-002-17	Mur-len Rd Arterial M&O Phase I(151st to 167nd)	\$32,000.00	\$947,182.12		\$600,000.00	\$584.39	\$1,579,766.51
PN 3-P-003-17	Santa Fe Arterial M&O (Parker to Kansas)	\$0.00	\$380,321.34		\$379,658.93	\$361.48	\$760,341.75
PN 3-P-004-17	Woodland Rd Arterial M&O (Harold to K-10)	\$468,584.06	\$1,351,899.53			\$225,827.97	\$2,046,311.56
PN 3-P-005-17	119th Street Arterial M&O (Black Bob to Plfum)	\$103,000.00	\$1,775,875.79			\$487.82	\$1,879,363.61
PN 3-P-007-17	Mur-len Rd Arterial M&O Phase II (143rd to 135th)	\$38,000.00	\$1,225,540.03			\$445.40	\$1,263,985.43
PN 3-P-009-17	Local/Collector Mill & Overlay	\$85,000.00	\$3,809,516.51	\$1,000,000.00			\$4,894,516.51
PN 3-P-010-17	Local/Collector Micro Surface	\$50,000.00	\$1,766,918.42				\$1,816,918.42
PN 3-P-011-17	Street Maintenance Curb Replacement		\$138,474.55				\$138,474.55
PN 3-P-012-17	Street Maintenance Crack Sealing		\$155,843.99				\$155,843.99
PN 3-P-013-17	Raintree & Devonshire Mill & Overlay	\$794,638.83					\$794,638.83
3-P-001-18	151st Street Arterial M&O	\$159,986.56					\$159,986.56
3-P-002-18	Lone Elm Road Arterial M&O	\$239,223.48					\$239,223.48
3-P-003-18	College Blvd Arterial M&O	\$99,998.80					\$99,998.80
3-P-004-18	143rd Street Arterial M&O	\$93,222.61					\$93,222.61
TOTAL ALLOCATION		\$2,400,000.00	\$12,172,976.20	\$1,000,000.00	\$1,599,887.84	\$231,553.08	\$17,404,417.12

2017 SMST Fund Balance Summary

	2014 Actual	2015 Actual	2016 Actual	2017 Budget	2017 Actual*
Beginning Fund Balance	\$0	\$2,563,642	\$3,452,256	\$2,569,850	\$2,695,484
Revenue:					
Sales Tax	\$6,736,937	\$9,068,620	\$11,545,236	\$11,161,785	\$11,510,779
Interest Income	\$7,160	\$25,392	\$47,992	\$7,599	\$116,403
Transfer Revenue	\$669,545	\$1,209,550	\$0	\$0	\$0
Total Revenue	\$7,413,642	\$10,303,562	\$11,593,228	\$11,169,384	\$11,627,182
Funds Available	\$7,413,642	\$12,867,204	\$15,045,484	\$13,739,234	\$14,322,666
Expenditures:					
Transfer to Projects	\$4,850,000	\$9,414,948	\$12,350,000	\$12,000,000	\$12,172,946
Ending Fund Balance	\$2,563,642	\$3,452,256	\$2,695,484	\$1,739,234	\$2,149,720

*Unaudited

Conclusion

The Committee has concluded that:

- The revenue from SMST is being appropriately sequestered and routinely tracked, reported, and monitored.
- The expenditures of SMST funds were utilized in a manner consistent with the referendum passed by the Olathe voters.

- The City's funding of the Street Preservation Program is proceeding in a manner consistent with the commitments made to the voters of Olathe.

Further detailed information about the SMST Finance Oversight Committee's proceedings and the projects in the 2017 Street Preservation Program may be found in the appendix of this report. This report has been researched, assembled and presented in a manner the committee believes is consistent with the stated objectives of Resolution 14-1020.

In accordance with the directives of Resolution 14-1020, the 2017 Annual Report of the Street Maintenance Sales Tax Finance Oversight Committee is respectfully submitted:

Ms Anne Oswald, Chairperson

The Members of the SMST Finance Oversight Committee

Ms Carrie Reza, Vice Chair

Mr Tom Grady

Mr Steve Smith

Mr Doug Svatos

Ms Becky Feller

Mr Gregg Herbert

City of Olathe
2017 Annual Report
Street Maintenance Sales Tax Finance Oversight Committee

Appendix

- I. SMST Finance Oversight Committee Activities

- II. Project Information
 - a. Dennis Avenue Arterial Mill & Overlay
 - b. Mur-len Arterial Mill & Overlay Phase I (151st to 167th)
 - c. Santa Fe Arterial Mill & Overlay (Parker to Kansas)
 - d. Woodland Road Arterial Mill & Overlay (Harold to K-10)
 - e. 119th Street Arterial Mill & Overlay (Black Bob to Plfumn)
 - f. Mur-len Arterial Mill & Overlay Phase II (143rd to 135th)
 - g. Local/Collector Mill & Overlay
 - h. Local/Collector Micro Surface Treatment
 - i. Curb Replacement program
 - j. Crack Sealing program
 - k. Raintree & Devonshire Mill & Overlay
 - l. 151st Street Arterial Mill & Overlay – design
 - m. Lone Elm Road Arterial Mill & Overlay – design
 - n. College Boulevard Arterial Mill & Overlay – design
 - o. 143rd Street Arterial Mill & Overlay – design
 - p. Map of 2017 projects

- III. Resolution No. 17-1011 authorizing the 2017 Street Preservation Program

- IV. Definitions of Street Preservation Project Categories

**STREET MAINTENANCE SALES TAX
FINANCE OVERSIGHT COMMITTEE
ACTIVITIES**

2018:

- ✓ March 6, 2018 Council reappoints Gregg Herbert, Doug Svatos, Anne Oswald, and Carrie Rezac. for second 2-year term. Svatos and Oswald are reappointed for their third consecutive term; Herbert reappointed for second consecutive term; upon completing an unexpired term Rezac is appointed to her first term. Becky Feller is appointed to fill an unexpired term which will expire 3/1/19. Council appoints Anne Oswald as Chair and Carrie Rezac as Vice Chair.

- ✓ April 5, 2018 Committee reviewed the 2017 financial information and the draft 2017 SMST Finance Oversight Committee's annual report. Received presentation by staff on the 2018 Street Preservation Program.

- ✓ April 17, 2018 Committee Chair Anne Oswald presented the 2017 Annual Financial Report to the City Council.

“Dennis Avenue Arterial Mill and Overlay Project”

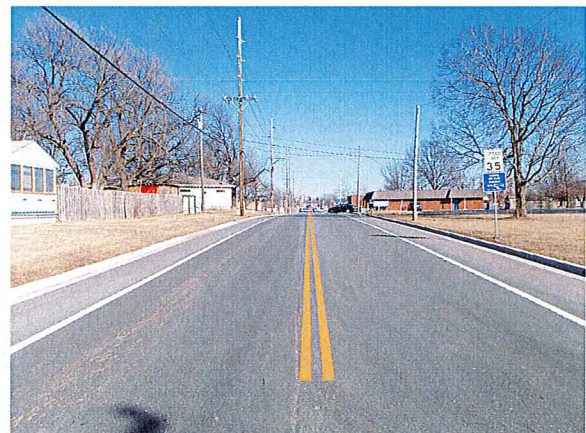
Project Number: 3-P-001-17	
Project: Dennis Avenue Arterial Mill and Overlay Project	Project Description: The arterial mill and overlay from Parker Street to Ridgeview Road included 2” milling and asphalt resurfacing, concrete curb and gutter replacement, sidewalk and ADA sidewalk ramp replacement, installation of new sidewalk from Frisco Lake to Harrison Street, traffic signal detection, and pavement markings. The project also included replacement of several storm sewer crossings between Parker and Harrison Streets.
Contractor: Freeman Concrete Const.	
Lane Miles: 4.5	
Project Status: Complete	
	Design Revenues and Expenditures funded from 2016 Street Preservation and reported in 2016 - \$80,000.

Revenue Source(s)	Amount	% of Project		Expenditures	Amount	% of Project
CIP Cash	\$145,687.00	10.5%		Design/Engineering	\$27,400.00	1.97%
General Obligation Bonds	\$0.00			Acquisition	\$0.00	
CARS Program	\$620,228.91	44.69%		Construction	\$1,240,457.81	89.38%
Street Maintenance Sales Tax	\$621,403.92	44.78%		Project Management – Inspection	\$41,928.39	3.02%
Storm Water Funds				Utilities	\$0.00	
Other Revenue: Investment Earnings	\$481.67	0.03%		Other: Testing, Publications, BNSF Pedestrian Crossings	\$78,015.30	5.63%
Total Revenues	\$1,387,801.50	100%		Total Expenditures	\$1,387,801.5	100%

Before



After



“Mur-Len Road Arterial Mill & Overlay”

Phase I

Project Number: 3-P-002-17	
Project: Mur-Len Road Arterial Mill & Overlay (167 th Street to 151 st Street)	Project Description: The project from 151 st Street to 167 th Street included asphalt base repair, 2” depth milling and superpave asphalt overlay, installation of 8’ concrete shared use path, ADA ramps, curb and sidewalk replacements, pavement markings, traffic signal detection and stormwater improvements.
Contractor: O’Donnell & Sons Const.	Design Revenues and Expenditures funded from 2016 Street Preservation and reported in 2016 - \$97,000.
Lane Miles: 4.2	
Project Status: Complete	

Revenue Source(s)	Amount	% of Project		Expenditures	Amount	% of Project
CIP Cash	\$32,000.00	2.0%		Design/Engineering		
General Obligation Bonds				Acquisition		
CARS Program	\$600,000.00	38.0%		Construction	\$1,525,735.01	96.6%
Street Maintenance Sales Tax	\$947,182.12	59.9%		Project Management – Inspection	\$31,851.62	2.0%
Storm Water Funds				Utilities: Streetlights	\$17,600.00	1.1%
Other Revenue: Investment Earnings	\$584.39	0.1%		Other: Testing & Publications	\$4,579.88	0.3%
Total Revenues	\$1,579,766.51	100%		Total Expenditures	\$1,579,766.51	100%

Before Photo



After Photo



“Santa Fe Street Arterial Mill and Overlay Project”

Project Number: 3-P-003-17	
Project: Santa Fe Arterial Mill & Overlay	Project Description: The arterial mill and overlay from Parker Street to the BNSF Railroad Crossing east of Walnut Street, included 2” milling and asphalt resurfacing, complete concrete curb and gutter replacement, sidewalk and ADA sidewalk ramp replacement where needed, a median reconstruction at the Parker Street intersection, traffic signal detection, and pavement markings. Design and Project Management Revenues and Expenditures funded from 2016 Street Preservation and reported in 2016 - \$60,000.
Contractor: Freeman Concrete Const.	
Lane Miles: 3.75	
Project Status: Complete	

Revenue Source(s)	Amount	% of Project		Expenditures	Amount	% of Project
CIP Cash	\$0	%		Design/Engineering	\$	%
General Obligation Bonds	\$0			Acquisition		
CARS Program	\$379,658.93	49.93%		Construction	\$759,317.85	99.86%
Street Maintenance Sales Tax	\$380,321.34	50.02%		Project Management - Inspection	\$	%
Storm Water Funds				Utilities		
Other Revenue: Investment Earnings	\$361.48	0.05%		Other: Testing & Publications	\$1023.90	0.14%
Total Revenues	\$760,341.75	100%		Total Expenditures	\$760,341.75	100%

Before Photo



After Photo

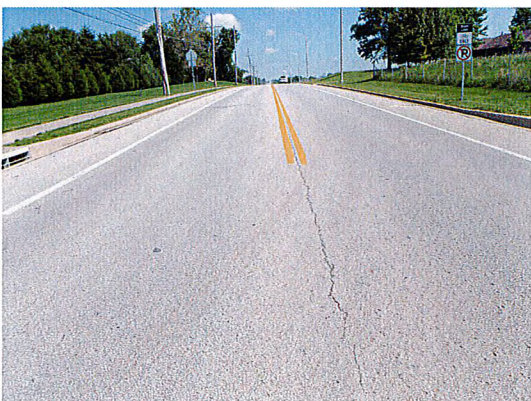


“Woodland Road Arterial Mill and Overlay Project”

Project Number: 3-P-004-17	
Project: Woodland Road	Project Description: The project includes asphalt base repair, 2” depth milling and asphalt overlay, 5’ concrete sidewalk, ADA ramps, curb and sidewalk replacements, pavement markings, traffic signal modification and right turn lanes at the intersection of College and a right turn lane on the eastbound K-10 off ramp along with installation of a traffic signal on College at the ramp.
Contractor: O’Donnell & Sons Const.	
Lane Miles: 8.1	
Project Status: Construction Complete and Final Payment Pending	
	Design Revenues and Expenditures funded from 2016 Street Preservation and reported in 2016 - \$166,000.

Revenue Source(s)	Amount	% of Project		Expenditures	Amount	% of Project
CIP Cash	\$468,584.06	22.9%		Design/Engineering	\$27,780.00	1.36%
Street Excise Tax	\$225,000.00	11.0%		Acquisition		
CARS Program				Construction	\$1,959,221.55	95.74%
Street Maintenance Sales Tax	\$1,351,899.53	66.07%		Project Management - Inspection	\$55,946.56	2.73%
Storm Water Funds				Utilities		
Other Revenue: Investment Earnings	\$827.97	0.03%		Other: Testing & Publications	\$3,363.45	0.17%
Total Revenues	\$2,046,311.56	100%		Total Expenditures	\$2,046,311.56	100%

Before Photo



After Photo



“119th Street Arterial Mill and Overlay Project”

Project Number: 3-P-005-17	
Project: 119 th Street, Pflumm Road to Black Bob Road	Project Description: The project included asphalt base repair, 2” depth milling and superpave asphalt overlay, installation of 8’ concrete shared use path, ADA ramps, curb and sidewalk replacements, pavement markings and traffic signal detection.
Contractor: Freeman Concrete Const.	
Lane Miles: 4.2	Design Revenues and Expenditures funded from 2016 Street Preservation and reported in 2016 - \$120,000.
Project Status: Complete	

Revenue Source(s)	Amount	% of Project		Expenditures	Amount	% of Project
CIP Cash	\$103,000.00	5.48%		Design/Engineering	\$21,945.00	1.17%
General Obligation Bonds				Acquisition		
CARS Program				Construction	\$1,823,682.57	97.04%
Street Maintenance Sales Tax	\$1,775,875.79	94.49%		Project Management - Inspection	\$31,449.74	1.67%
Storm Water Funds				Utilities		
Other Revenue: Investment Earnings	\$487.82	0.03%		Other: Testing & Publications	\$2,286.30	0.12%
Total Revenues	\$1,879,363.61	100%		Total Expenditures	\$1,879,363.61	100%

Before Photo



After Photo



“Mur-Len Road Arterial Mill & Overlay”

Phase II

Project Number: 3-P-007-17	
Project: Mur-Len Road Arterial Mill & Overlay (143 rd Street to Santa Fe Street)	Project Description: The project from 143 rd Street to Santa Fe included asphalt base repair, 2” depth milling and superpave asphalt overlay, installation of 8’ concrete shared use path, ADA ramps, curb and sidewalk replacements, pavement markings, traffic signal detection and stormwater drainage improvements.
Contractor: O’Donnell & Sons Const.	Design Revenues and Expenditures funded from 2016 Street Preservation and reported in 2016 - \$74,000.
Lane Miles: 4.1	
Project Status: Complete	

Revenue Source(s)	Amount	% of Project		Expenditures	Amount	% of Project
CIP Cash	\$38,000.00	3.0%		Design/Engineering		
General Obligation Bonds				Acquisition		
CARS Program				Construction	\$1,211,865.86	95.9%
Street Maintenance Sales Tax	\$1,225,540.03	96.9%		Project Management – Inspection	\$37,046.48	2.9%
Storm Water Funds				Utilities: Streetlights	\$11,550.00	0.9%
Other Revenue: Investment Earnings	\$445.40	0.1%		Other: Testing & Publications	\$3,523.09	0.3%
Total Revenues	\$1,263,985.43	100%		Total Expenditures	\$1,263,985.43	100%

Before Photo



After Photo



“2017 Local and Collector Street Mill & Overlay Project”

Project Number: 3-P-009-17	
Project: 2017 Local and Collector Street Mill & Overlay Project	Project Description: The project includes full depth asphalt base repair, 2” depth mill and asphalt overlay, curb and sidewalk replacements, and ADA sidewalk ramps on approximately 57 local and collector streets.
Contractor: O’Donnell & Sons Const.	
Lane Miles: 23.0	The project also included the base repair for the streets scheduled as part of the 2018 Local and Collector Street Mill & Overlay. Moving forward the next years base repair will be completed in the year prior to the contracted work.
Project Status: Complete	

Revenue Source(s)	Amount	% of Project	Expenditures	Amount	% of Project
CIP Cash	\$85,000.00	1.8%	Design/Engineering		
General Obligation Bonds	\$1,000,000.00	20.4%	Acquisition		
CARS Program			Construction	\$4,773,711.95	97.5%
Street Maintenance Sales Tax	\$3,809,516.51	77.8%	Project Management - Inspection	\$84,725.88	1.7%
Storm Water Funds			Utilities: Streetlights	\$27,057.00	0.6%
Other Revenue			Other: Testing & Publications	\$9,021.68	0.2%
Total Revenues	\$4,894,516.51	100%	Total Expenditures	\$4,894,516.51	100%

Before Photo



After Photo



“2017 MAQS Micro Surface Project”

Project Number: 3-P-010-17	
Project: 2017 MAQS Micro Surface Project	Project Description: The project includes application of a Type II Modified Aggregate Quickset Surface (MAQS) Micro Surface on the existing street surface and replacement of pavement markings on approximately 187 streets.
Contractor: Donelson Construction	
Lane Miles: 59.0	
Project Status: Complete	

Revenue Source(s)	Amount	% of Project		Expenditures	Amount	% of Project
CIP Cash	\$50,000.00	2.8%		Design/Engineering		
General Obligation Bonds				Acquisition		
CARS Program				Construction	\$1,746,403.17	96.1%
Street Maintenance Sales Tax	\$1,766,918.42	97.2%		Project Management - Inspection	\$14,727.31	0.8%
Storm Water Funds				Utilities: Streetlights	\$52,201.40	2.9%
Other Revenue				Other: Testing & Publications	\$3,586.54	0.2%
Total Revenues	\$1,816,918.42	100%		Total Expenditures	\$1,816,918.42	100%

Before Photo



After Photo



“Street Maintenance Curb Replacement”

Project Number: 3-P-011-17	
Project: Street Maintenance Curb Replacement	<p>Project Description: Removal and replacement of existing concrete curb and gutter on local and collector streets. The project completed 6,544 Linear Feet of deteriorated and broken concrete curb spot location replacement throughout the city.</p> <p>SMST funding is used to pay for all materials related to concrete curb replacement completed by the Street Maintenance Division of the Public Works Department.</p>
Contractor: Street Maintenance Division	
Linear Feet: 7,675	
Project Status: Complete	

Revenue Source(s)	Amount	% of Project		Expenditures	Amount	% of Project
CIP Cash				Design/Engineering		
General Obligation Bonds				Acquisition		
CARS Program				Construction	\$138,474.55	100%
Street Maintenance Sales Tax	\$138,474.55	100%		Project Management - Inspection		
Storm Water Funds				Utilities		
Other Revenue				Other: Testing & Publications		
Total Revenues	\$138,474.55	100%		Total Expenditures	\$138,474.55	100%

“Street Maintenance Crack Sealing”

Project Number: 3-P-012-17	
Project: Street Maintenance Crack Sealing	Project Description: Crack Sealing of pavement cracks up to a width of ¼ inch with rubberized asphalt sealant to prevent damage to base asphalt. The project also includes a wide crack sealant on cracks which have become wider than ¼ inch. Annual target for completion is 250 lane miles receiving crack seal treatment for any cracking along the length of the street segment. Crack sealing is the first step of an efficient street preservation program. SMST funding is used to pay for materials related to crack sealing completed by the Street Maintenance Division of the Public Works Department.
Contractor: Street Maintenance Division	
Lane Miles: 277	
Project Status: Complete	

Revenue Source(s)	Amount	% of Project		Expenditures	Amount	% of Project
CIP Cash				Design/Engineering		
General Obligation Bonds				Acquisition		
CARS Program				Construction	\$155,843.99	100%
Street Maintenance Sales Tax	\$155,843.99	100%		Project Management - Inspection		
Storm Water Funds				Utilities		
Other Revenue				Other: Testing & Publications		
Total Revenues	\$155,843.99	100%		Total Expenditures	\$155,843.99	100%

Before

After

“Raintree and Devonshire Mill and Overlay Project ”

Project Number: 3-P-013-17	
Project: Raintree and Devonshire Mill and Overlay Project	Project Description: The project includes full depth asphalt base repair, 2” depth mill and asphalt overlay, curb and sidewalk replacements, and ADA sidewalk ramps on approximately 16 local streets.
Contractor: Currently out for Bid	
Lane Miles: 3.5	This project is funded from the 2017 Street Preservation Program and will be constructed in the summer of 2018. No expenditures have occurred in the 2017 program year.
Project Status: Advertised for Bids	

Revenue Source(s)	Amount	% of Project		Expenditures	Amount	% of Project
CIP Cash	\$794,638.83	100%		Design/Engineering		
General Obligation Bonds				Acquisition		
CARS Program				Construction		
Street Maintenance Sales Tax				Project Management - Inspection		
Storm Water Funds				Utilities: Streetlights		
Other Revenue				Other: Testing & Publications		
Total Revenues	\$794,638.83			Total Expenditures		

Before Photo

After Photo

“151st Street Arterial Mill and Overlay Project”

Project Number: 3-P-001-18	
Project: 151 st Street Arterial Mill and Overlay Project (Mur-len Road to Pflumm Road)	Project Description: This project from Mur-Len Road to Pflumm Road includes asphalt base repair, 2" depth milling and superpave asphalt overlay, median modifications, ADA ramps, curb and sidewalk replacements, pavement markings, traffic signal detection, traffic signal improvements at Brougham, and stormwater drainage improvements.
Design Consultant: HNTB Corp.	
Lane Miles: 8.0	
Project Status: Design	

Revenue Source(s)	Amount	% of Project		Expenditures	Amount	% of Project
CIP Cash	\$159,986.56	100%		Design/Engineering	\$157,387.00	98.4%
General Obligation Bonds				Acquisition		
CARS Program				Construction		
<i>Street Maintenance Sales Tax</i>				Project Management – Inspection	\$2,599.56	1.6%
Storm Water Funds				Utilities:		
Other Revenue:				Other:		
Total Revenues	\$159,986.56	100%		Total Expenditures	\$159,986.56	100%

“Lone Elm Road Arterial Mill and Overlay Project”

Project Number: 3-P-002-18	
Project: Lone Elm Road Arterial Mill and Overlay Project (159 th Street to 175 th Street)	Project Description: This project from 159th Street to 175th Street includes turn lanes and traffic signal installation at 167th Street, asphalt base repair, 2" depth milling and superpave asphalt overlay, pavement markings, and stormwater improvements.
Design Consultant: HNTB Corp.	
Lane Miles: 4.9	
Project Status: Design	

Revenue Source(s)	Amount	% of Project		Expenditures	Amount	% of Project
CIP Cash	\$239,223.48	100%		Design/Engineering	\$222,230.00	92.9%
General Obligation Bonds				Acquisition	\$8,382.50	3.5%
CARS Program				Construction		
<i>Street Maintenance Sales Tax</i>				Project Management – Inspection	\$8,610.98	3.6%
Storm Water Funds				Utilities:		
Other Revenue:				Other: KDHE Permit Fee		
Total Revenues	\$239,223.48	100%		Total Expenditures	\$239,223.48	100%

“College Boulevard Arterial Mill and Overlay Project”

Project Number: 3-P-003-18	
Project: College Boulevard Arterial Mill and Overlay Project (Clare Road to K-7 Highway)	Project Description: This project from Clare Road to K-7 Highway includes traffic signal and street light installation at the K-7 interchange, turn lane installation on the southbound K-7 off-ramp, asphalt base repair, 2" depth milling and superpave asphalt overlay, installation of 8' concrete shared use path, ADA ramps, curb and sidewalk replacements and pavement markings.
Design Consultant: Olsson Assoc.	
Lane Miles: 4.4	
Project Status: Design	

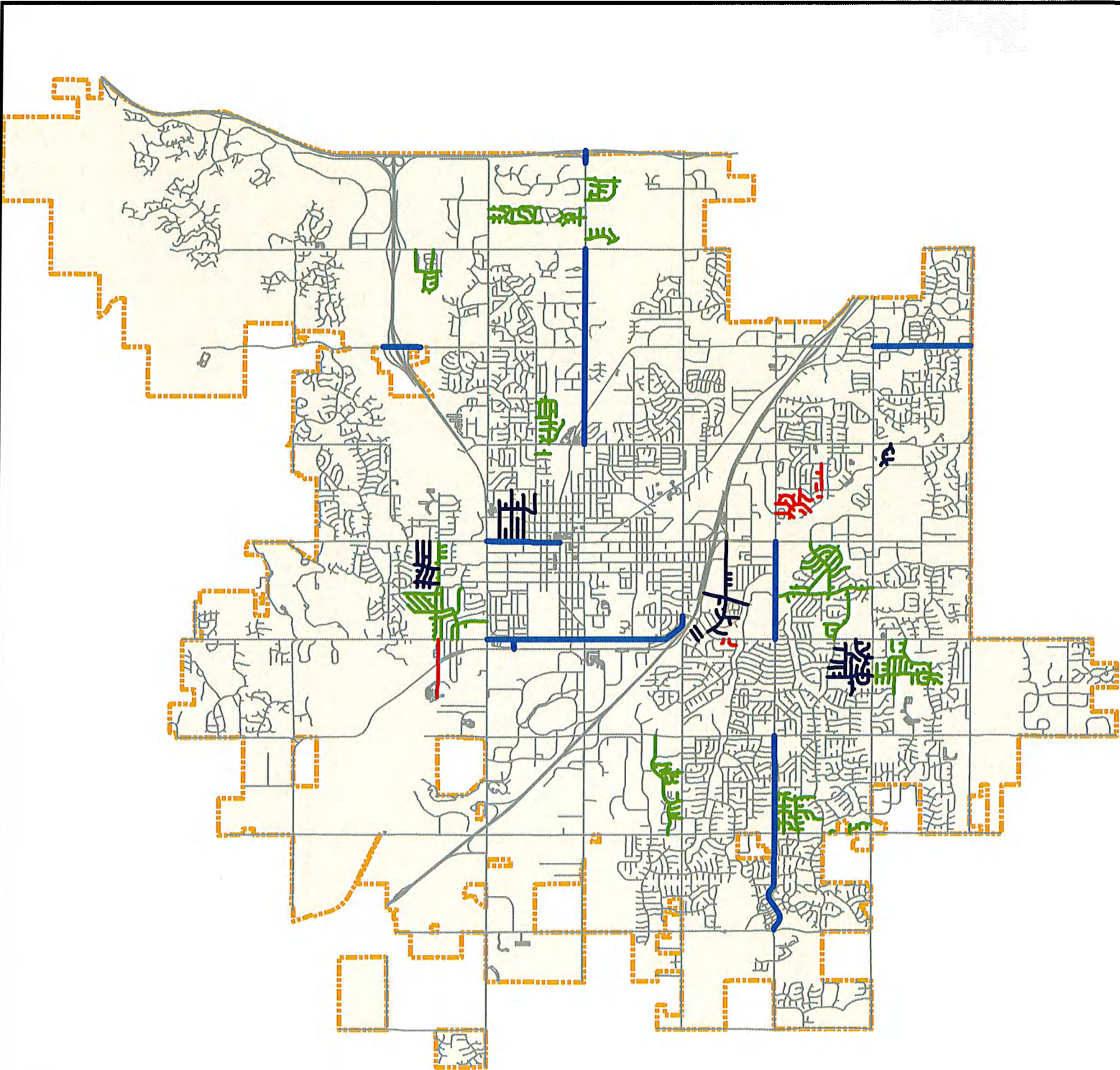
Revenue Source(s)	Amount	% of Project		Expenditures	Amount	% of Project
CIP Cash	\$99,998.80	100%		Design/Engineering	\$98,448.00	98.4%
General Obligation Bonds				Acquisition		
CARS Program				Construction		
<i>Street Maintenance Sales Tax</i>				Project Management – Inspection	\$1,550.80	1.6%
Storm Water Funds				Utilities:		
Other Revenue:				Other:		
Total Revenues	\$99,998.80	100%		Total Expenditures	\$99,998.80	100%

“143rd Street Arterial Mill and Overlay Project”

Project Number: 3-P-004-18	
Project: 143 rd Street Arterial Mill and Overlay Project (Black Bob Road to Pflumm Road)	Project Description: This project from Black Bob Road to Pflumm Road includes asphalt base repair, 2" depth milling and superpave asphalt overlay, stormwater improvements, ADA ramps, curb and sidewalk replacements, installation of 8' concrete shared use path, pavement markings and traffic signal detection.
Design Consultant: HNTB Corp.	
Lane Miles: 2.0	
Project Status: Design	

Revenue Source(s)	Amount	% of Project		Expenditures	Amount	% of Project
CIP Cash	\$93,222.61	100%		Design/Engineering	\$89,115.00	95.6%
General Obligation Bonds				Acquisition		
CARS Program				Construction		
<i>Street Maintenance Sales Tax</i>				Project Management – Inspection	\$4,107.61	4.4%
Storm Water Funds				Utilities:		
Other Revenue:				Other:		
Total Revenues	\$93,222.61	100%		Total Expenditures	\$93,222.61	100%

2017 Street Preservation Program Project Locations



Legend

- Dennis_Ave_Arterial_Mill_and_Overlay_2017
- Mur_Len_Rd_Arterial_Mill_and_Overlay_151st_to_167th_2017
- Santa_Fe_Arterial_Mill_and_Overlay_Parker_to_Kansas_2017
- Arterial_Mill_and_Overlay_119th_St_BlackBob_to_Pflumm_2017
- Mur_Len_Rd_Arterial_Mill_and_Overlay_143rd_to_135th_2017
- Arterial_Mill_and_Overlay_119th_St_at_K7_Highway_2017
- Woodland_Rd_Arterial_Mill_and_Overlay_Harold_to_K10_2017
- Local_and_Collector_Mill_and_Overlay_2017
- Raintree_and_Devonshire_Area_Mill_and_Overlay_Construction in 2018
- Micro_Surface_2017



RESOLUTION NO. 17-1011

**A RESOLUTION AUTHORIZING THE 2017 STREET PRESERVATION PROGRAM,
PN 3-P-000-17.**

**BE IT RESOLVED BY THE GOVERNING BODY OF THE CITY OF OLATHE,
KANSAS:**

SECTION ONE: Pursuant to the authority of Charter Ordinance No. 74 of the City, the Governing Body hereby authorizes the 2017 Street Preservation Program. Such program shall rehabilitate the following streets in the City of Olathe:

Dennis Avenue Arterial Mill and Overlay Project – Parker Street to Ridgeview Road. The project funding consists of CIP Fund Cash, Johnson County Assistance Road System (CARS) Funds, and Street Maintenance Sales Tax Cash. The project includes asphalt base repair, 2" depth milling and superpave asphalt overlay, median modifications, ADA ramps, curb and sidewalk replacements, pavement markings, traffic signal detection and stormwater drainage improvements.

Mur-Len Road Arterial Mill and Overlay Project – 167th Street to 151st Street. The project funding consists of CIP Fund Cash, Johnson County Assistance Road System (CARS) Funds, and Street Maintenance Sales Tax Cash. The project includes asphalt base repair, 2" depth milling and superpave asphalt overlay, installation of 8' concrete shared use path, ADA ramps, curb and sidewalk replacements, pavement markings, traffic signal detection and stormwater drainage improvements.

Santa Fe Street Arterial Mill and Overlay Project – Parker Street to Kansas Avenue. The project funding consists of CIP Fund Cash, Johnson County Assistance Road System (CARS) Funds, and Street Maintenance Sales Tax Cash. The project includes asphalt base repair, 2" depth milling and superpave asphalt overlay, median modifications, ADA ramps, curb and sidewalk replacements, pavement markings and traffic signal detection.

Woodland Road Arterial Mill and Overlay Project – Harold Street to K-10 Highway. The project funding consists of Street Excise Tax (Signal Installation), CIP Fund Cash and Street Maintenance Sales Tax Cash. The project includes asphalt base repair, 2" depth milling and superpave asphalt overlay, installation of right turn lanes at the College Boulevard intersection, traffic signal installation at K-10 Highway ramps, ADA ramps, curb and sidewalk replacements, pavement markings and traffic signal detection.

119th Street Arterial Mill and Overlay Project – Black Bob Road to Pflumm Road and the K-7 Highway interchange. The project funding consists of CIP Fund Cash and Street Maintenance Sales Tax Cash. The project includes asphalt base repair, 2" depth milling and superpave asphalt

overlay, median modification at the Greenwood Street intersection, installation of 8' concrete shared use path, ADA ramps, curb and sidewalk replacements, pavement markings and traffic signal detection.

Mur-Len Road Arterial Mill and Overlay Project – 143rd Street to Santa Fe Street. The project funding consists of CIP Fund Cash and Street Maintenance Sales Tax Cash. The project includes asphalt base repair, 2" depth milling and superpave asphalt overlay, installation of 8' concrete shared use path, ADA ramps, curb and sidewalk replacements, pavement markings, traffic signal detection and stormwater drainage improvements.

Local and Collector Street Mill and Overlay Project – See street list exhibits and map locations. The project includes full depth asphalt base repair on up to 90 lane miles, 2" depth mill and asphalt overlay, curb and sidewalk replacements, and ADA sidewalk ramps on approximately 57 streets totaling 22 lane miles. The project funding consists of General Obligation Bonds, CIP Fund Cash and Street Maintenance Sales Tax Cash.

Local and Collector Street Micro Surface Project – See street list exhibits and map locations. The project includes Type II Micro Surface on approximately 187 streets, totaling 59 lane miles. The project funding consists of CIP Fund Cash and Street Maintenance Sales Tax Cash.

Street Maintenance Curb Replacement Project – Removal and replacement of approximately 25,000 linear feet of deteriorated curb and gutter by Street Maintenance Concrete Crews in multiple locations throughout Olathe.

Street Maintenance Crack Sealing Project – Crack sealing materials for approximately 250 lane miles to be applied by Street Maintenance Crews.

Design of 2018 Arterial Mill and Overlay Projects – Design costs for 2018 Arterial Mill and Overlay Projects will utilize 2017 CIP Fund Cash and/or Street Maintenance Sales Tax Funds. Starting the consultant design process for these projects in the year preceding allows for adequate design time, utility coordination and earlier bidding of the projects in the construction year. Construction of these projects will be authorized and funded through the 2018 Street Preservation Program. The following projects are currently included but not limited to:

Lone Elm Road, 159th Street to 175th Street
151st Street, Mur-Len Road to Pflumm Road
Renner Road, Kansas City Road to North City Limits
College Boulevard, Claire Road to K-7 Highway
Strang Line Road, Mur-Len Road to Black Bob Road

SECTION TWO: The cost for completing the projects listed in Section One is \$18,550,000. Funds to pay for the projects shall come from the following sources:

Street Maintenance Sales Tax	\$12,800,000
General Obligation Bonds	\$ 1,000,000
CIP Fund	\$ 2,400,000
Johnson County Assistance Road System (CARS)	\$ 2,125,000
Street Excise Tax	\$ <u>225,000</u>

TOTAL \$18,550,000

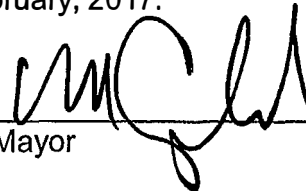
SECTION THREE: Pursuant to the authority of Charter Ordinance No. 74, the Governing Body hereby authorizes the issuance of not to exceed \$1,000,000 of general obligation bonds, all exclusive of issuance costs and interest on any temporary financing.

SECTION FOUR: The City intends to reimburse itself for capital expenditures made on or after the date which is 60 days before the date of this Resolution in connection with the project, pursuant to Treasury Regulation § 1.150-2, with the proceeds of bonds and/or notes in the maximum principal amount of \$1,000,000 exclusive of issuance costs and any interest costs for temporary financing.

SECTION FIVE: This Resolution shall take effect immediately.

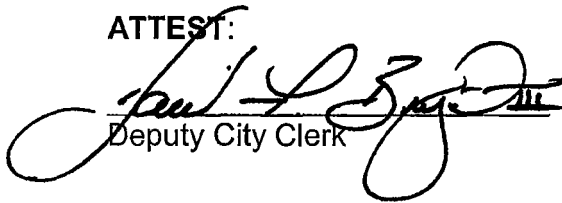
ADOPTED by the Governing Body this 7th day of February, 2017.

SIGNED by the Mayor this 7th day of February, 2017.



Mayor

ATTEST:




Deputy City Clerk



(SEAL)

APPROVED AS TO FORM:



City Attorney

2017 Local & Collector Street Mill & Overlay Streets

Project Streets

STREET	FROM/TO
West 143rd Terrace	Blackfeather to East End Cul-de-sac
West 144th Street	Brougham to Blackfoot
West 144th Terrace	Blackfeather to Black Bob
West 144th Terrace	Blackfoot to Southeast End Cul-de-sac
West 145th Terrace	Blackfoot to Brougham
West 146th Street	Blackfoot to Brougham
West 146th Terrace	Brougham to Black Bob
West 146th Circle	146th Terrace to 146th Terrace
West 146th Terrace	146th Terrace to North End Cul-de-sac (East)
West 146th Terrace	146th Terrace to North End Cul-de-sac (West)
South Kaw Drive	Kaw to West End Cul-de-sac
South Kaw Drive	Kaw to East End Cul-de-sac
South Twilight Lane	Blackfeather to Northeast End Cul-de-sac
South Twilight Lane	146th Terrace to North End Cul-de-sac
South Twilight Court	144th Terrace to North End Cul-de-sac
South Kaw Drive	144th Terrace to 147th Street
South Blackfeather Street	143rd to South End Cul-de-sac
South Blackfoot Drive	146th Terrace to North End Cul-de-sac
South Blackfeather Street	Blackfeather to East End Cul-de-sac
South Roth Circle	146th Terrace to North End Cul-de-sac
North Iowa Street	Prairie to Catalpa
North Troost Circle	Prairie to North End Cul-de-sac
North Troost Street	Santa Fe to North End Dead End (680' North)
North Logan Street	Santa Fe to North End Cul-de-sac
North Clinton Street	Santa Fe to Spruce
North Clinton Street	Prairie to North End Cul-de-sac
North Marion Street	Santa Fe to North End Parking Lot
North Monroe Street	Santa Fe to Forest
West Prairie Street	Iowa to Marion
West 128th Street	Southwest End to Northeast End Cul-de-sac
South Constance Street	Constance to Southeast End Cul-de-sac
South Constance Street	127th Street to South End Dead End
South Darnell Street	Constance to Southeast End Cul-de-sac
East Salem Lane	Ridgeview Road to Clairborne Road
East Cambridge Street	Ridgeview to Clairborne
East Cedar Place	Clairborne to East End Cul-de-sac

South Clairborne Road	Rogers to Sheridan
South Clairborne Road	Santa Fe to Rogers
East College Way	Lindenwood to Rogers
South Wood Lane	Willow to Penrose
East Elm Street	Clairborne to East End Cul-de-sac
East Elm Terrace	Clairborne to East End Cul-de-sac
East Penrose Lane	Clairborne to Northwest End Cul-de-sac
East Penrose Lane	Clairborne to Willow
South Penrose Lane	Collegeway to South End Cul-de-sac
East Haven Lane	Clairborne to Southeast Parking Lot
South Janell Street	Santa Fe to Cedar
West Elm Terrace	East Pavement Change to Chamberry
South Chambery Drive	Chambery to Northwest End Cul-de-sac
South Brittany Drive	Cedar to South End Cul-de-sac
South Chambery Drive	Cedar to South End Cul-de-sac
South Chambery Drive	Santa Fe to Cedar
South Normandy Drive	Cedar to South End Cul-de-sac
North Normandy Drive	Santa Fe to Cedar
West Park Street	Normandy to Chambery
West Cedar Street	Montclair to West Pavement Change
West Elm Terrace	Montclair to West Pavement Change

Alternate Streets

STREET	FROM/TO
West 131st Terrace	Trenton to Raintree
West 131st Terrace	Brougham to West End
West 132nd Street	Mur-Len to East Cul-de-sac
West 132nd Street	132nd Circle to Brougham
West 132nd Court	132nd Circle to Northeast End
West 132nd Terrace	Brougham to West End
West 132nd Street	132nd to Locust
West 133rd Street	Mur-Len to East End
West 133rd Street	Locust to East End
West 132nd Street	132nd Street to North End
West 132nd Circle	132nd Circle to Northwest End
South Trenton Street	Indian Creek Parkway to 132nd
South Brougham Drive	Indian Creek Parkway to 129th
South Locust Street	132nd Circle to 133rd
South Cottonwood Drive	Indian Creek to North End Cul-de-sac
West Brougham Court	South Brougham to End

Base Repair Streets

STREET	FROM/TO
South Cottonwood Drive	119th Street to 120th Street
South Greenwood Street	119th Street to 123rd Street
South Rene Street	119th Street to 123rd Street
South Hallet Street	120th Street to 121st Street
West 120th Street	120th Street to North End Cul-de-sac
South Hallet Street	120th Street to North End Cul-de-sac
South Acuff Lane	121st Lane to North End Cul-de-sac
South Widmer Street	121st Terrace to 123rd Street
West 121st Terrace	121st Terrace to South End Cul-de-sac
South Alcan Street	122nd Street to North End Dead End
South Timberlane Boulevard	122nd Street to North End Dead End
South Albervan Street	123rd Street to 122nd Street
South Greenwood Street	123rd Street to 125th Street
South Summit Street	123rd Street to East End Cul-de-sac
West 120th Street	123rd Street to East End Dead End
South Hagan Street	123rd Street to North End Cul-de-sac
South Shannan Lane	123rd Street to North End Dead End
West 121st Terrace	123rd Street to Northwest End Cul-de-sac
South Mullen Road	123rd Street to Shannan
West 120th Terrace	123rd Street to West End Cul-de-sac
West 121st Street	123rd Street to West End Cul-de-sac
South Summit Street	123rd Street to West End Cul-de-sac
South Gallery Street	125th Street to 123rd Street
South Hallet Street	125th Street to North End Cul-de-sac
North Parkway Drive	125th Terrace to South End Cul-de-sac
North Persimmon Drive	131st Street to 127th Street
North Sumac Street	131st Street to North End Dead End
East 144th Street	144th Street to North End Cul-de-sac
East 144th Street	144th Street to North End Cul-de-sac
South Blackfoot Drive	147th Terrace to 147th Street
South Kaw Drive	147th Terrace to 147th Street
South Arapaho Drive	147th Terrace to North End Cul-de-sac
South Seminole Drive	147th Terrace to 147th Street
South Alden Street	147th Street to 149th Street
West 147th Street	147th Street to North End Cul-de-sac
West 147th Street	147th Street to North End Cul-de-sac
South Peppermill Court	147th Street to North End Cul-de-sac
West 147th Street	147th Street to Northwest End Cul-de-sac
West 147th Street	147th Street to South End Cul-de-sac

West 147th Street	147th Street to South End Cul-de-sac
West 147th Terrace	147th Terrace to North End Cul-de-sac
West 147th Terrace	147th Terrace to Southwest End Cul-de-sac
South Saddletree Lane	147th Terrace to Southwest End Cul-de-sac
South Navaho Drive	147th Street to 147th Terrace
South Seminole Circle	147th Street to North End Cul-de-sac
South Navaho Drive	148th Terrace to 283' South
West 149th Court	149th Street to East End Cul-de-sac
West 149th Terrace	150th Street to Alden
South Navaho Drive	150th Terrace to 151st Street
South Arapaho Drive	150th Terrace to North End Cul-de-sac
South Lindenwood Drive	151st Street to 2681' North (Cul-de-sac to East)
South Blackfoot Drive	151st to North End Cul-de-sac
South Lindenwood Drive	143rd Street to 2681' South
West 150th Place	Alden to 150th Terrace
South Valley Road	Alta to North End Cul-de-sac
West 148th Terrace	Arapaho to 149th Terrace
West 150th Street	Arapaho to Blackfoot
South Arapaho Drive	Arapaho to West End
West 150th Street	Black Bob to 150th Place
West 150th Terrace	Black Bob to 151st Street
West 149th Street	Black Bob to Alden
West Peppermill Drive	Black Bob to Alden
West 147th Street	Black Bob to Alden
West 149th Terrace	Blackfoot to Arapaho
West 147th Drive	Blackfoot to East End Cul-de-sac
West 147th Street	Brougham to Black Bob
West 147th Terrace	Brougham to Black Bob
West 149th Terrace	Brougham to East end
South Summertree Lane	Brougham to North End Cul-de-sac
North Canyon Drive	Canyon to Northwest End Cul-de-sac
West Johnston Street	Canyon to West End Cul-de-sac
North Cherry Street	City Hall to North End Cul-de-sac
North Woodland Road	Cothrell to Spruce
West 150th Terrace	East End to West End
West Valley Road	Elm Terrace to Wabash Terrace
South Oscar Street	Elm to Ferrel
West Elm Terrace	Elm to Valley
West Sheridan Street	Ferrel to Dennis
West Sheridan Street	Ferrel to Parker
East Frontier Lane	Frontier to North End Cul-de-sac
West 123rd Terrace	Gallery to West End Cul-de-sac
West 124th Street	Gallery to West End Cul-de-sac

West 121st Lane	Greenwood to Acuff
West 124th Terrace	Greenwood to East End Cul-de-sac
South Hagan Street	Greenwood to Greenwood
West 121st Terrace	Greenwood to Hagan
South Greenwood Street	Greenwood to West End Cul-de-sac
South Hagan Street	Hagan Street to West End Cul-de-sac
West 122nd Terrace	Hagan to West End Cul-de-sac
West 125th Street	Hallet to Gallery
West 120th Terrace	Hallet to West End Cul-de-sac
North Woodland Road	Harold to Cothrell
North Curtis Street	Harold to North End Dead End
South Nelson Road	Harold to Northgate
East Frontier Lane	Jamestown to Sleepy Hollow
North Nelson Road	Kansas City Road to Harold
South Lindenwood Drive	Lindenwood to East End Cul-de-sac
South Lindenwood Drive	Lindenwood to East End Cul-de-sac
South Lindenwood Drive	Lindenwood to East End Cul-de-sac (North)
South Lindenwood Drive	Lindenwood to East End Cul-de-sac (South)
East Frontier Lane	Lindenwood to Jamestown
East Sheridan Bridge Lane	Lindenwood to Mur-Len
East Pawnee Drive	Lindenwood to West End Parking Lot
West 149th Street	Locust to Arapaho
West 147th Terrace	Locust to Brougham
North Mesquite Street	Mesquite to Northwest End Cul-de-sac
West Mesquite Terrace	Mesquite to Southwest End Dead End
East 144th Street	Mur-Len to Kenwood
East 144th Terrace	Mur-Len to Kenwood
East Jamestown Drive	Mur-Len to Lindenwood
East Sleepy Hollow Drive	Mur-Len to Lindenwood
East Stratford Road	Mur-Len to Lindenwood
East Sunvale Drive	Mur-Len to Lindenwood
North Purdom Street	Nelson to 125th Terrace
East 125th Terrace	Nelson to Parkway
West 122nd Street	Nelson to West End Dead End
South Greenwood Street	Northeast End to Southwest End Cul-de-sac
West 121st Terrace	Northwest End to Southeast End Cul-de-sac
West Ferrel Drive	Oscar to Montclair
North Arroyo Drive	Overlook to North End Cul-de-sac
West Wabash Terrace	Parker to Valley
West Peppermill Drive	Peppermill to Southeast End Cul-de-sac
North Singletree Street	Persimmon to 131st Street
North Overlook Drive	Persimmon to Arroyo
North Persimmon Drive	Persimmon to East Cul-de-sac

North Persimmon Drive	Persimmon to East End Cul-de-sac
North Persimmon View Street	Persimmon to North End Cul-de-sac
North Cedarcrest Drive	Persimmon to North End Dead End
North Mesa Street	Persimmon to Overlook
North Arroyo Drive	Persimmon to Overlook
West Post Oak Road	Persimmon to Pinion
West Post Oak Road	Persimmon to Pinion
West Persimmon Circle	Persimmon to West End Cul-de-sac
West Sage Circle	Persimmon to West End Cul-de-sac
West 131st Street	Persimmon to West End Dead End
North Pinion Street	Pinion Street to East End Cul-de-sac
North Pinion Street	Pinion Street to East End Cul-de-sac (North)
North Pinion Street	Pinion Street to East End Cul-de-sac (South)
West Surrey Street	Pinon to Persimmon
West Post Oak Road	Post Oak Road to South End Cul-de-sac (East)
West Post Oak Road	Post Oak Road to South End Cul-de-sac (West)
North Pinion Street	Post Oak to Surrey
North Purdom Street	Purdom to Northeast End Cul-de-sac
North Purdom Street	Purdom to South End Cul-de-sac
West 123rd Street	Rene Street to South End Cul-de-sac
West 121st Street	Rene to Greenwood
West 120th Street	Rene to Hagan
South Rene Street	Rene to Northwest End Cul-de-sac
North Persimmon Drive	Santa Fe to 131st Street
North Chestnut Street	Santa Fe to 3840' North
North Water Street	Santa Fe to Poplar
West 121st Terrace	Shannan to Alcan
West 122nd Street	Shannan to Greenwood
South Kenwood Street	Sheridan to Stratford
South Kenwood Street	Sleepy Hollow to Stratford
North Woodland Road	Spruce to Santa Fe
North Sumac Street	Sumac to Northeast End Cul-de-sac
North Mesquite Street	Surrey to Post Oak
West Cedar Terrace	Valley Road to East End Cul-de-sac
West Cedar Street	Valley to East End Cul-de-sac
West Elm Terrace	Valley to Montclair
West Elm Street	Valley to Parker
West Wabash Street	Valley to Wabash Terrace
South Wabash Court	Wabash to South End Cul-de-sac
North Persimmon Drive	West End Cul-de-sac to East End Cul-de-sac
North Stevenson Street	Whitney to Prairie
North Water Street	Whitney to South End Cul-de-sac
East 126th Terrace	Woodland to 125th Terrace

2017 Local and Collector Street Micro Surface Streets

Project Streets

STREET	FROM/TO
South Shannan Street	146th Terrace to Greenwood
West Alta Lane	Alta to West End at the School Parking Lot
South Sycamore Street	Brougham to Beckett
South Sycamore Street	139th Street to Brougham
West 105th Street	Woodland to East End Cul-de-sac
West 105th Terrace	Langley to West End Cul-de-sac
West 105th Terrace	Langley to East End Cul-de-sac
West 106th Terrace	Langley to East End Cul-de-sac
West 106th Terrace	Langley to Emerald
West 107th Street	Woodland to Millstone
West 107th Terrace	107th Place to 108th Street
West 107th Place	Lone Elm to 108th Street
West 108th Street	Southwest to Northeast End Cul-de-sacs
West 108th Street	Lone Elm to 107th Place
West 108th Street	107th Place to 108th Street
West 108th Terrace	108th Street to 108th Street
West 108th Terrace	Woodland to West End Dead End
West 110th Street	Woodland to 110th Terrace
West 110th Terrace	Southwest to Northeast Dead End
South Acuff Court	Greenwood to South End Cul-de-sac
South Acuff Lane	146th Terrace to South End Cul-de-sac
West 113th Street	Chouteau to Aminda
West 113th Street	Aminda to Woodsonia
West 113th Street	Chouteau to East End Dead End
West 113th Terrace	Chouteau to Aminda
West 113th Place	Chouteau to West End Cul-de-sac
South Alden Court	143rd Street to South End Cul-de-sac
South Alden Street	145th Street to 147th Street
West Alta Lane	Dennis to Ferrel
South Alta Lane	Ferrel to Valley
West 123rd Court	Iowa to Race
West 139th Street	139th Street to North End Cul-de-sac
West 124th Terrace	Race to Iowa
West 124th Place	Race to Crestone
West 125th Court	Race to West End Cul-de-sac
West 125th Terrace	West End Cul-de-sac to East End Cul-de-sac

West 125th Place	Belford to Race
South Arapaho Drive	141st Terrace to Brougham
West 126th Terrace	Race to Northwest End Cul-de-sacs
West 126th Place	126th Terrace to Southwest End Cul-de-sac
West 136th Street	Brougham to Beckett
West 136th Street	Brougham to Locust
West 136th Terrace	Locust to Brougham
West 137th Street	Brougham to Sycamore
West 138th Street	Brougham to Northeast End Dead End
West 138th Terrace	Sycamore to West End Cul-de-sac
West 139th Street	Brougham to Black Bob
West 139th Street	Mur-Len to Brougham
West 139th Circle	139th Street to South End Cul-de-sac
West 141st Terrace	Brougham to West End Dead End
West 144th Street	Greenwood to West End Cul-de-sac
West 144th Terrace	Greenwood to West End Cul-de-sac
West 145th Street	Darnell to Greenwood
West 145th Terrace	Darnell to West End Cul-de-sac
West 146th Street	Darnell to West End Cul-de-sac
West 146th Terrace	Black Bob to East End Cul-de-sac
West 147th Street	West End Cul-de-sac to East End Cul-de-sac
West Loula Street	West End Cul-de-sac to Montclair
South Harwick Street	108th Terrace to 142' North
South Greenwood Street	Greenwood Street to East End Cul-de-sac
West 146th Court	146th Terrace to North End Cul-de-sac
West Brittany Drive	Brittany to Northeast End Cul-de-sac
South Brougham Drive	Brougham to East End Cul-de-sac
South Brougham Circle	139th Street to South End Cul-de-sac
West 138th Terrace	138th Terrace to North End Cul-de-sac
West 139th Street	139th Street to North End Cul-de-sac
South Brougham Drive	Brougham to West End Cul-de-sac
West 123rd Court	123rd Court to Northwest End Cul-de-sac
South Chouteau Street	Chouteau to South End Cul-de-sac
West 108th Terrace	108th Terrace to Southwest End Cul-de-sac
West 107th Place	107th Place to North End Cul-de-sac
West 108th Terrace	108th Terrace to South End Cul-de-sac
West 108th Street	108th Street to Southeast End Cul-de-sac
South Woodsonia Drive	College to 113th Street
West 107th Street	107th Street to North End Cul-de-sac
South Millbrook Lane	108th Street to 108th Terrace
West 107th Place	108th Street to East End
South Redbud Lane	108th Street to 108th Street
West 108th Street	108th Terrace to East End

West Beckett Lane	Brougham to Northeast Cul-de-sac
West Beckett Lane	Brougham to Edinburgh
South Crestone Street	Race to South End Cul-de-sac
West Brittany Drive	Montclair to Wabash
South Brookwood Court	139th Street to South End Cul-de-sac
South Brougham Drive	139th Street to 143rd Street
South Brougham Drive	Santa Fe to 139th Street
South Virginia Lane	Ferrel to Dennis
West Virginia Lane	Parker to Ferrel
West Locust Street	Brougham to Beckett
South Millstone Drive	107th Street to North End Dead End
South Millstone Drive	Millstone to East End Cul-de-sac
West Chambery Drive	Wabash to Ferrel
South Harwick Street	108th Terrace to South End Dead End
South Constance Court	146th Terrace to South End Cul-de-sac
South Constance Street	146th Terrace to South End Cul-de-sac
South Constance Street	146th Terrace to North End Cul-de-sac
West Wabash Street	Ridge to 130' West of Chambery
West Dartmouth Street	Montclair to East End Cul-de-sac
South Darnell Street	145th Street to South End Cul-de-sac
South Montclair Drive	Santa Fe to Dennis
South Mullen Street	146th Terrace to 145th Street
South Theden Street	108th Street to 108th Terrace
South Race Street	Harold to 123rd Court
South Langley Street	110th Street to North End Cul-de-sac
South Langley Street	107th Street to 105th Street
West Normandy Drive	Ferrel to Wabash
South Edgebrook Street	Virginia to South End Cul-de-sac
West Elizabeth Street	Iowa to East End Cul-de-sac
South Belford Street	126th Terrace to North End Dead End
South Belford Street	108th Terrace to Northwest End Dead End
South Barker Road	110th Terrace to North End Cul-de-sac
West Ferrel Drive	Montclair to Pavement Change 788' West
South Ferrel Drive	Dennis to Oscar
South Quail Ridge Drive	123rd Court to North End Cul-de-sac
West Park Street	Montclair to East End Cul-de-sac
South Freedom Street	Aminda to South End Cul-de-sac
North Pine Street	Elizabeth to North End Dead End
South Greenwood Street	146th Terrace to Hagan
South Greenwood Street	143rd Street to 146th Terrace
South Brownridge Street	North End Cul-de-sac to South End Cul-de-sac
South Quail Ridge Drive	123rd Court to 124th Terrace
South Chouteau Street	113th Street to Freedom

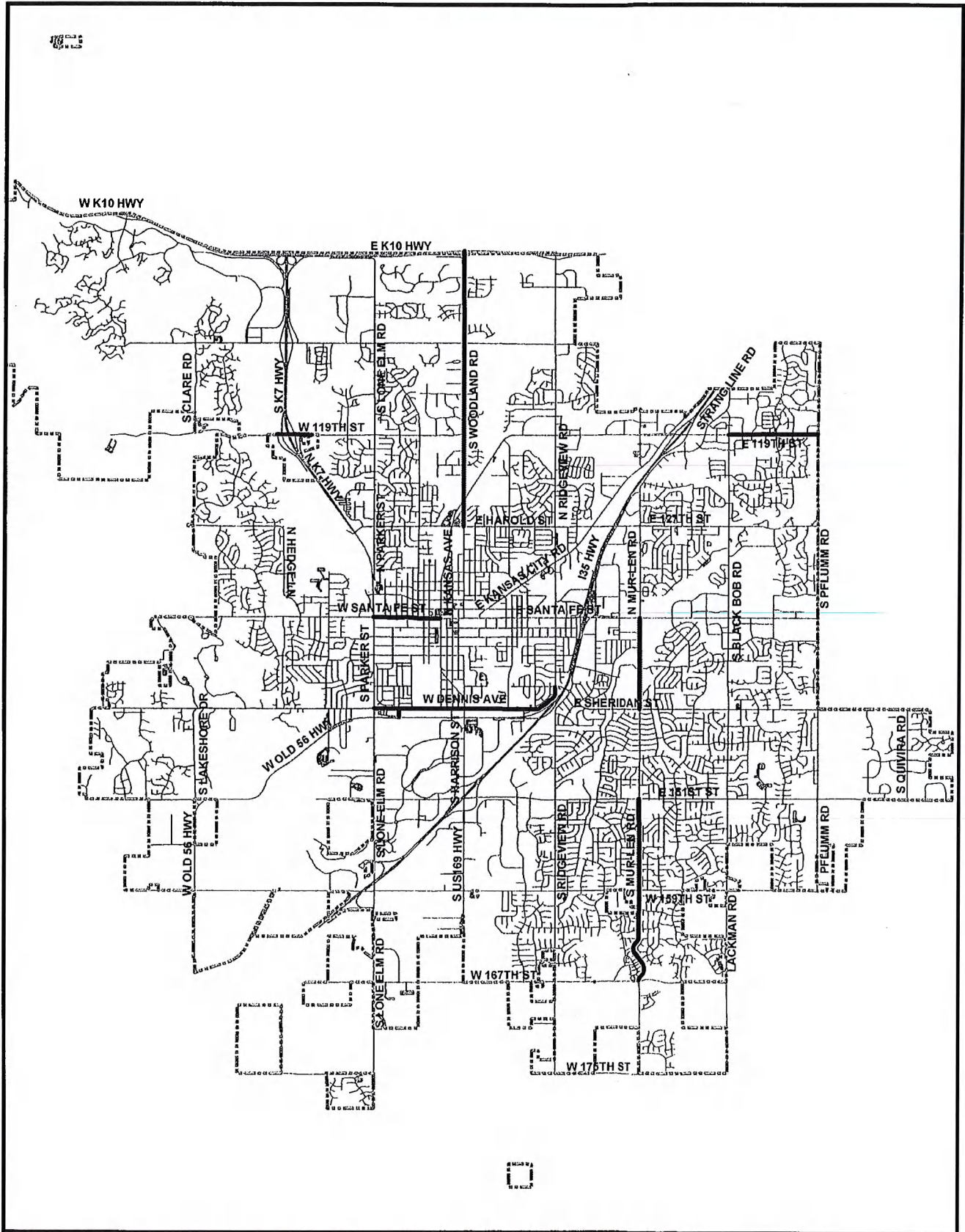
South Emerald Street	107th Street to North End Cul-de-sac
South Emerald Street	110th Street to North End Cul-de-sac
South Emerald Street	105th Street to North End Dead End
South Hagan Street	146th Terrace to North End Cul-de-sac
South Hagan Street	146th Terrace to Greenwood
South Hallet Street	147th Street to South End Cul-de-sac
South Aminda Street	113th Street to Freedom
South Rockford Street	Aminda to 113th Street
South Rockford Street	College to Aminda
South Cornice Street	110th Street to North End Cul-de-sac
South Ridge Drive	Elm to Ferrel
South Pine Street	124th Terrace to 123rd Court
South Deer Run Street	North End Cul-de-sac to South End Cul-de-sac
West Ferrel Drive	Pavement Change to Chambery
South Annie Street	154th Street to 155th Street
South Brentwood Street	157th Street to 159th Street
South Brentwood Street	151st Street to 153rd Terrace
West 153rd Terrace	Brentwood to East End Cul-de-sac
West 153rd Place	Hillside to West End Cul-de-sac
West 153rd Place	Hillside to East End Cul-de-sac
West 154th Street	Brentwood to Ridgeview
West 154th Street	154th Street to North End Cul-de-sac
West 154th Terrace	Annie to East End Cul-de-sac
West 155th Street	Brentwood to East End Cul-de-sac
West 157th Street	Ridgeview to Brentwood
West 157th Terrace	Brentwood to East End Cul-de-sac
West 157th Place	Brentwood to East End Cul-de-sac
West 158th Street	Ridgeview to Brentwood
South Brentwood Street	153rd Terrace to 157th Street
West 153rd Terrace	153rd Terrace to South End Cul-de-sac
South Hunter Street	157th Street to North End Cul-de-sac
South Hillside Street	155th Street to North End Cul-de-sac
South Hillside Street	153rd Terrace to 154th Street
South Summertree Court	157th Street to South End Cul-de-sac
West 155th Place	156th Street to Northeast End Cul-de-sac
West 156th Street	Mur-Len to Brougham
West 156th Street	156th Street to End Cul-de-sac
West 156th Terrace	Locust to East End Cul-de-sac
West 156th Terrace	East End Cul-de-sac to West End Cul-de-sac
West 157th Street	Locust to 157th Terrace
West 157th Terrace	Locust to Mur-Len
West 157th Terrace	Locust to East End Cul-de-sac
West 157th Terrace	157th Terrace to Southwest End Cul-de-sac

West 157th Terrace	157th Terrace to Northeast End Cul-de-sac
West 157th Terrace	Brougham to 157th Street
West 158th Street	Locust to East End Cul-de-sac
West 158th Terrace	Bradley to Brookfield
West 158th Terrace	Locust to 158th Terrace
West 158th Terrace	Locust to East End Cul-de-sac
West 158th Terrace	Black Bob to Blackfoot
West 158th Terrace	Brookfield to 158th Terrace Cul-de-sac
West 158th Terrace	158th Terrace to Southwest End Cul-de-sac
West 158th Terrace	159th Street to North End Cul-de-sac
South Blackfoot Court	159th Street to North End Cul-de-sac
South Bradley Drive	North End Dead End to South End Cul-de-sac
South Bradley Drive	156th Street to South End Cul-de-sac
South Bradley Drive	157th Terrace to South End Dead End
South Brookfield Street	159th Street to 156th Street
West 156th Street	156th Street to South End Cul-de-sac
South Locust Street	159th Street to 156th Street
South Locust Street	156th Street to North End Cul-de-sac
South Fox Ridge Court	158th Terrace to South End Cul-de-sac
South Roth Court	Northwest to Southeast End Cul-de-sacs

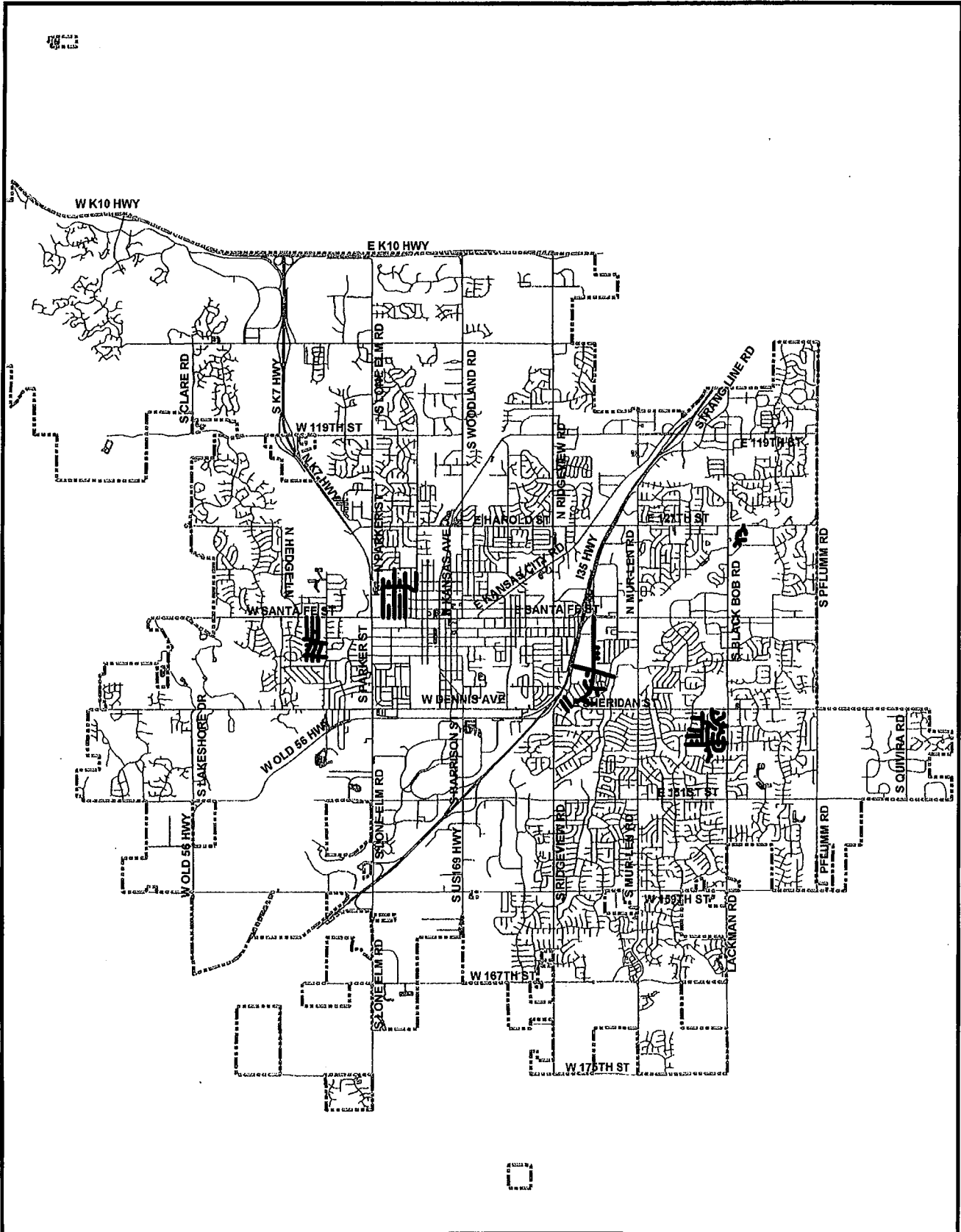
Alternate Streets

STREET	FROM/TO
South Arapaho Street	155th Street to Blackfoot
West 152nd Place	Brougham to East End Cul-de-sac
West 152nd Circle	Brougham to East End Cul-de-sac
West 154th Terrace	West End Cul-de-sac to East End Cul-de-sac
West 155th Street	Black Bob to Brougham
West 155th Terrace	Blackfoot to Southwest End Cul-de-sac
West 156th Street	Blackfeather to East End Cul-de-sac
West 156th Street	Blackfoot to Southwest End Cul-de-sac
West 156th Terrace	Blackfeather to East End Cul-de-sac
West 156th Terrace	Brougham to Southwest End Cul-de-sac
West 156th Court	Blackfoot to Southwest End Cul-de-sac
West 156th Place	West End Cul-de-sac to East End Cul-de-sac
West 157th Street	Brougham to West End Cul-de-sac
West 157th Street	Arapaho to West End Cul-de-sac
West 157th Terrace	Black Bob to Blackfeather
West 157th Terrace	Blackfeather to Blackfoot
West 157th Terrace	Arapaho to Southwest End Cul-de-sac
West 158th Street	Brougham to Arapaho
South Blackfeather Street	155th Street to 156th Street
South Blackfeather Street	156th Street to 157th Terrace
South Blackfeather Street	Blackfeather to Northeast End Cul-de-sac
South Blackfoot Street	157th Terrace to 155th Street
South Brougham Drive	151st Street to 156th Terrace
South Brougham Drive	156th Terrace to 159th Street
West 157th Terrace	157th Terrace to Northeast End Cul-de-sac
South Blackfoot Street	155th Street to Northwest End Cul-de-sac
South Navaho Court	155th Street to Northeast End Cul-de-sac

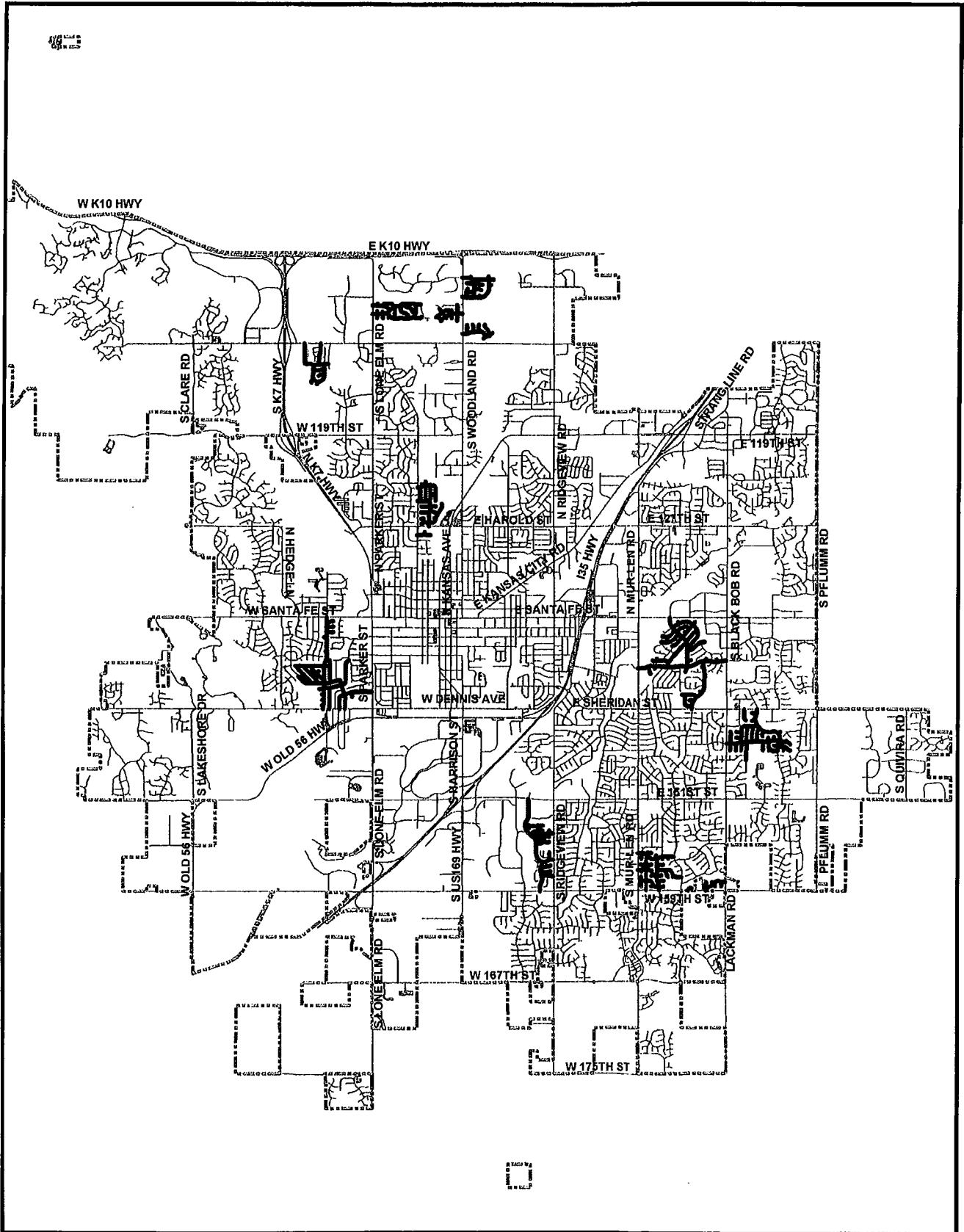
2017 Arterial Mill & Overlay Projects



2017 Local & Collector Street Mill & Overlay Project



2017 MAQS Micro Surface Project



Definitions of Street Preservation Project Categories

Crack Seal and Wide Crack Patch Seal



Crack seal is a preventative maintenance process consisting of sealing the cracks in the pavement with a rubberized sealant or asphalt sealing product to prevent the moisture from penetrating into the base and subgrade material. The joint between the asphalt surface and the concrete curb and gutter is also sealed. Wide Crack Patch

Seal is used on larger cracks that have also developed minor depressions. Usually along transverse cracks that are opened to a width wider than one half inch. The wide crack material incorporates a fine aggregate material to allow filling of larger cracks and depressions.

Target streets are Good or better condition.

Crack Seal is completed by Contractors and City Street Maintenance Crews depending on the scope of the project.

Resident Impact: Minimum, street open to traffic during work.

Full-Depth Repair (FDR)

If base or subgrade failure has occurred because of severe cracks or settlements of a pavement section, that pavement section needs to be replaced or repaired full-depth (typically 8 to 10 inches) to



a condition equal to or better than the surrounding pavement sections.

Full depth repairs are completed by Contractors and City Street Maintenance Crews depending on the scope of the project.

Resident Impact: Minimum, street open to traffic during work.

Micro Surface

Micro Surface is a mixture of an asphaltic oil and water (emulsion) and crushed rock aggregate that is spread over the street at about ¼ to 3/8-inch



thickness. The micro "cures" when the water evaporates leaving only the asphalt to coat the crushed rock. The asphalt acts as a binder to hold the slurry together and bonds to the existing pavement. The Micro Surface protects the existing street surface from the effects of aging and oxidizing and increases the skid resistance. Micro Surface typically requires a crack

seal on cracks 3/16 inch and larger.

All Micro Surface Streets are crack sealed prior to surface placement. Prep work may also include a minor amount of Full Depth Repair or surface replacement areas depending upon conditions; however, Micro Surface is typically used on streets that are in good to excellent condition. In general, a Micro Surface does not extend the life cycle of the pavement; it helps preserve the remaining utility and original design life of the pavement. Micro Surface is strictly a preventative maintenance operation.

Micro Surface projects are contracted.

Resident Impact: Medium – 2 to 4-hour cure time with street completely closed to traffic.

Ultrathin Bonded Asphalt Surface (UBAS)

An Ultrathin Bonded Asphalt Surface is an overlay that consists of a single layer of hot mix asphaltic concrete (minimum of 3/4 inch thick) used to level, waterproof, and restore the original street shape and ride. Edge Milling may be utilized to maintain the surface edge at the curb and gutter. Although it is not intended to add a substantial amount of structural value to the pavement section, it is a minor structural improvement, nonetheless. All UBAS streets are crack sealed prior to surface placement. Prep work may also include small amounts of isolated Full Depth Repair.

UBAS projects are contracted.

Resident Impact: medium – 4 to 8 hours street closed to traffic until pavement is placed, compacted and cooled.

Asphalt Mill and Overlay

Asphalt Mill and Overlay is rehabilitation which typically includes less than 30% FDR, limited curb and gutter repairs, ADA required sidewalk ramp improvements and a 2" depth structural mill and overlay.



Asphalt Mill and Overlay projects are contracted. FDR Base Repair may be completed by Street Maintenance crews prior to contractor construction.

Resident Impact: medium – street remains open to residents during concrete work with access limited at times, 1 to 2 days paving requires 4 to 8 hours street closed to traffic until pavement is placed, compacted and cooled.

Mill and Overlay Major Repair

Mill and Overlay Major Repair is a rehabilitation which typically includes greater than 30% but less than 70% FDR, extensive curb and gutter replacement, and a structural asphalt overlay usually 2" or more.



Mill and Overlay Major Repair projects are contracted. FDR Base Repair may be completed by Street Maintenance crews prior to contractor construction.

Resident Impact: medium – street remains open to residents during concrete work, larger sections of FDR may require street closure at times, 1 to 2 days surface paving requires 4 to 8 hours street closed to traffic until pavement is placed, compacted and cooled.

Curb & Gutter Replacement



Concrete curb & gutter replacement if needed is completed by the contractor on all Street Preservation Asphalt Mill and Overlay projects. Curb Only Replacement Projects will usually be completed by Street Maintenance.

Resident Impact: medium – street remains open to residents during concrete work; however, access to residential drives may be limited at times.

Reconstruction

Reconstruction is the process of replacing the entire street within the existing right-of-way and consists of subgrade improvements, replacing the full depth asphalt or concrete pavement section, all the curb and gutter, storm sewer, sidewalks and ADA Sidewalk ramps. Street reconstruction can incorporate moderate changes to the street alignment, profile, cross section, and roadway width.

Resident Impact: Major, project duration varies depending on length of street. The street is usually closed to thru traffic with access provided to residents and emergency personnel only. Resident access is usually restricted during working hours and during certain construction phases.

Reconstruction projects are contracted.

