

Frisco Lake 2022

# Neighborhood Survey

City of Olathe Healthy Neighborhood Initiative





# Neighborhood Surveys: Results

In August of 2022, as part of its Healthy Neighborhood Initiative (HNI), the City of Olathe mailed surveys to residents in three different Focus Area neighborhoods. These neighborhoods are identified as Focus Areas, or priority areas where we are working to align strategies to help restore the physical environment and fundamental conditions.

The purpose of each neighborhood survey was to:

- understand how residents perceive their neighborhood,
- learn what further improvements residents would like to see, and
- connect residents with each other to continue working together on key issues.

The City of Olathe has an entire team of internal staff known as our **Neighborhood Resource Team**, representing various City divisions, dedicated to being a resource and advocating for our neighborhoods. We communicate and collaborate on various neighborhood issues, working together to improve Olathe neighborhoods.

**NEXT STEPS >>** Based on your feedback and survey results, the Neighborhood Resource Team, along with any residents who would like to be involved, will begin to assess survey results and work together to create strategies to address issues raised by residents in each neighborhood. Strategies that come out of these meetings will be shared with the residents.

**HOW TO GET INVOLVED >>** If you would like to be included in these collaboration efforts with city staff on finding solutions to issues raised in this survey, please contact the Olathe Planning Division at [PlanningContact@olatheks.org](mailto:PlanningContact@olatheks.org) attention Neighborhood Surveys and include the name of your neighborhood included on the front of this survey. You can also call (913) 971-8750 and ask to speak with Planning Division staff regarding your Neighborhood Survey Results.

Please note that some issues mentioned in survey responses, such as housing repair or stormwater issues on individual properties, can be addressed directly by resources the City of Olathe already provides to residents. Please see these resources on page 12 and share them with any neighbors who may benefit from them.

Thank you again for your willingness to share your ideas and insight into your neighborhood!



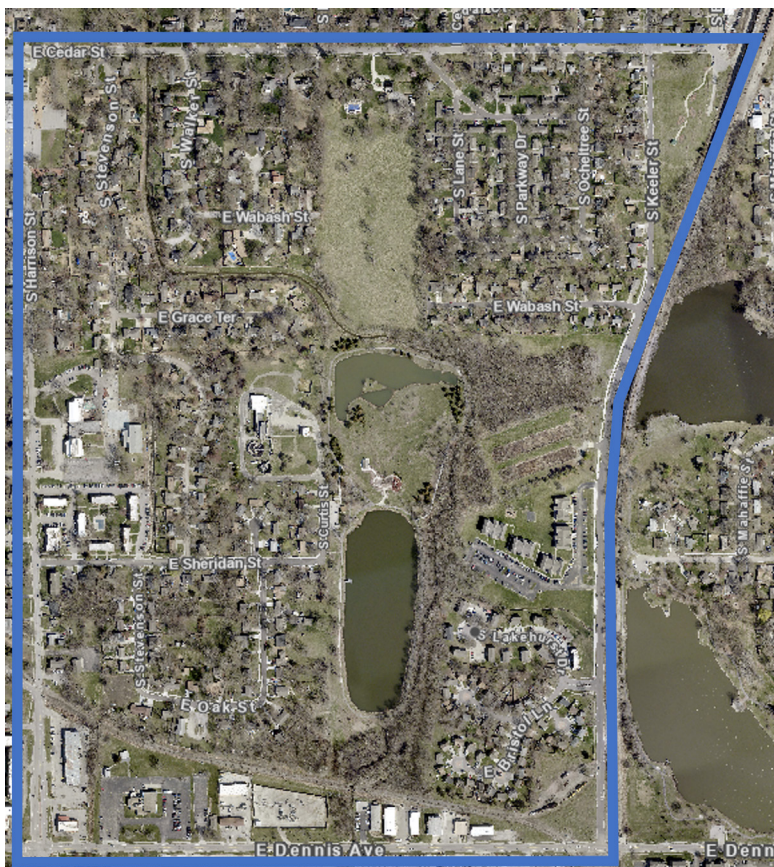
**Olathe Healthy  
Neighborhoods**

PRESERVE | PROTECT | ENHANCE

Olathe's Healthy Neighborhoods Initiative (HNI) works to identify, advocate, and assist residents so that they can continue to live in safe homes and neighborhoods they can be proud of for years to come.

To learn more about neighborhood grants and other support available through the Healthy Neighborhood Initiative, visit [olatheks.org/HealthyNeighborhoods](https://olatheks.org/HealthyNeighborhoods)

## *Frisco Lake Neighborhood Survey*



**628**  
Surveys  
Mailed

**64**  
Survey  
Responses

**10.2%**  
Response  
Rate

**Do you own or rent your home?**

**75%**      **25%**  
Own              Rent

According to the Census Bureau's American Community Survey (2020), the neighborhood's homeownership rate is roughly 50%. Renters were underrepresented in this survey's responses.

**How long have you lived in this neighborhood?**

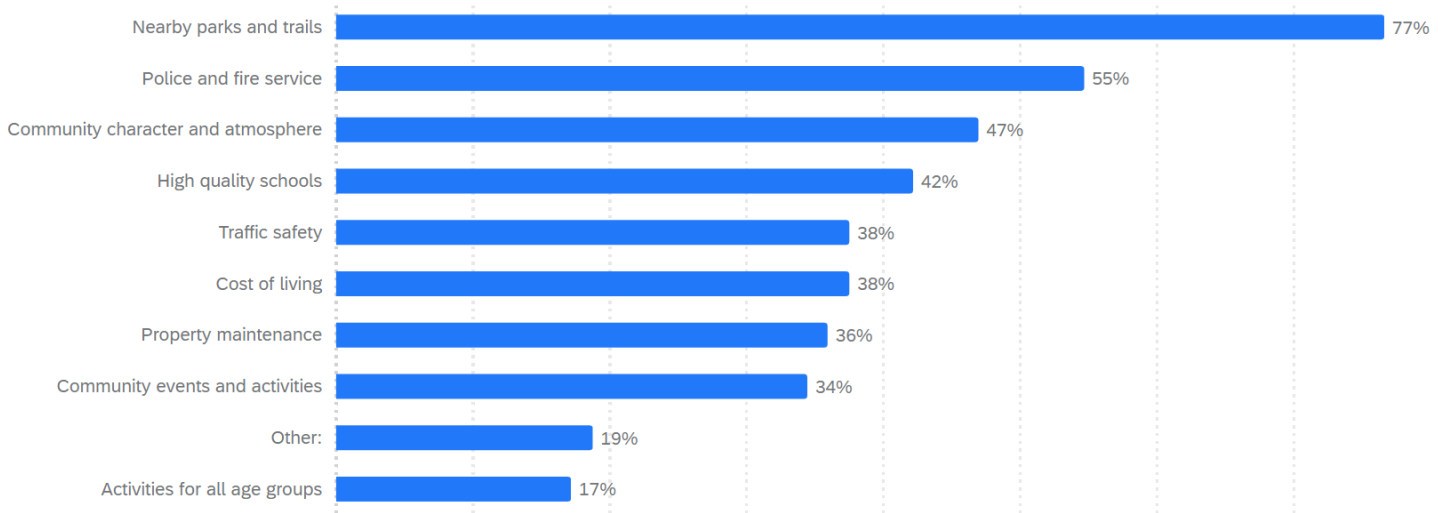
**35%**      **11%**      **18%**      **35%**  
0-5 years      5-10 years      10-20 years      20+ years

# Survey Responses

## 1: Do you feel like you are part of a neighborhood?

**89%** **11%**  
Yes No

## 2: What are some of the strengths of your neighborhood?



On average, each respondent selected over 4 strengths they saw in their neighborhood. Over 75% of respondents selected “nearby parks and trails” as a strength of their neighborhood, making this the most common strength selected.

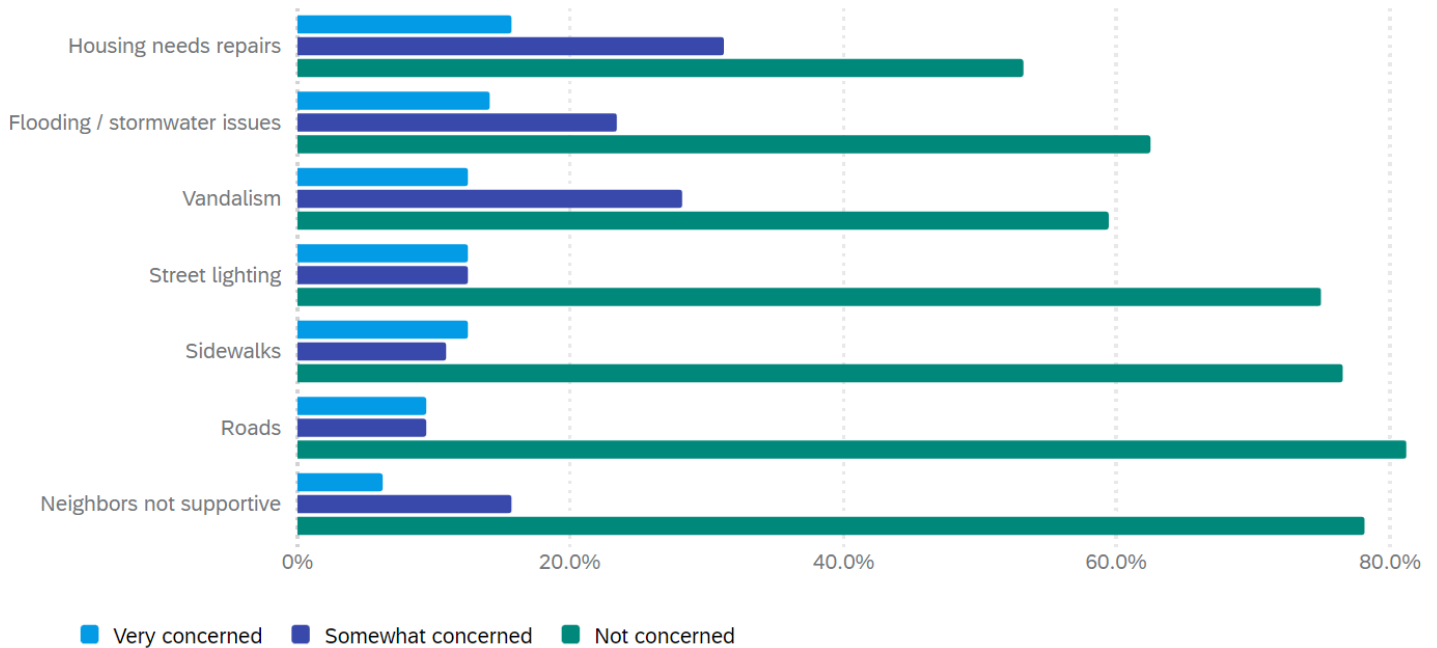
While property maintenance and traffic safety came up as concerns in later survey questions, over 33% of respondents still saw these as strengths of their neighborhood.

### The write-in entries for the “other” category were:

- “Great neighbors.”
- “Diversity.”
- “Olathe Civic Theatre Association.”
- “Quiet.”
- “Residents.”
- “Friendly neighbors.”
- “Quiet, well-developed, mature landscape.”
- “Great mix of house styles - not cookie-cutter.”

# Survey Responses

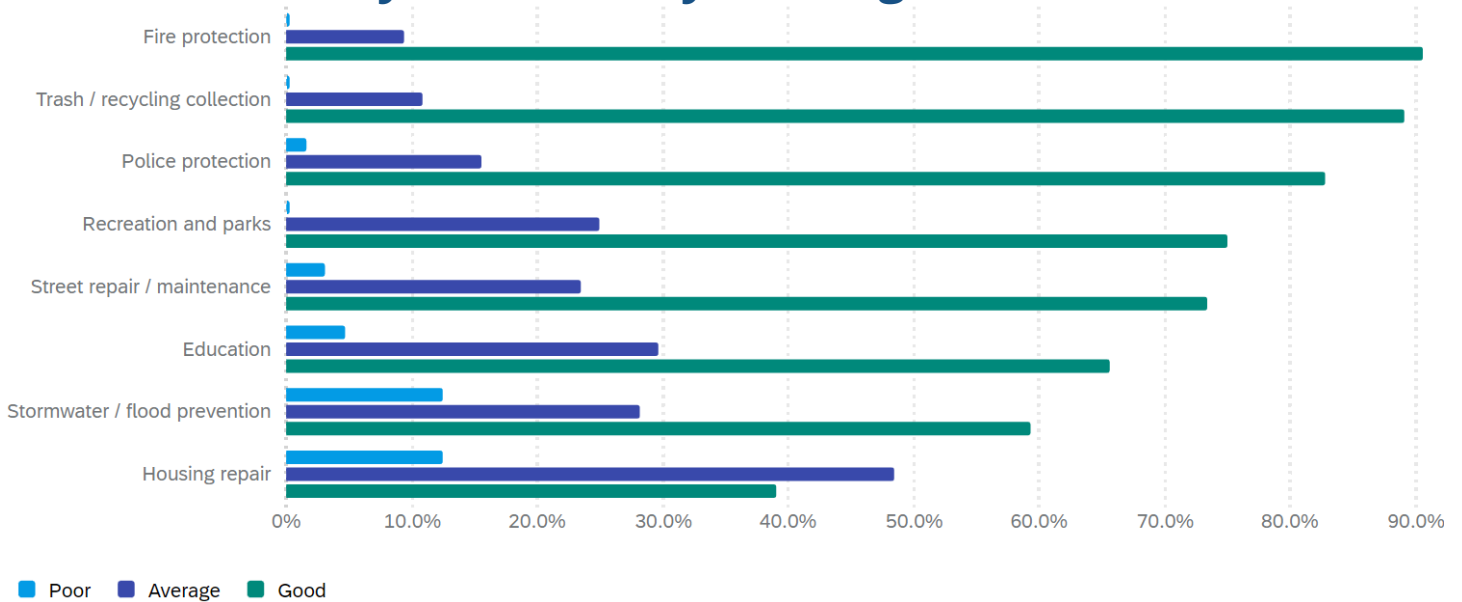
## 3: Please rate concerns you have for your neighborhood.



Housing needing repairs, flooding and stormwater issues, and vandalism were top concerns. Over 40% of respondents were either concerned or very concerned about these issues.

While over 75% of respondents were not concerned about street lighting, sidewalks, and roads, several respondents who had concerns identified what changes were needed in later questions.

## 4: How are city services in your neighborhood?



Respondents marked fire protection and trash / recycling collection as top city services for their neighborhood. About 90% said these services were good, and 0% said these services were poor.

Respondents marked housing repair and stormwater / flood prevention as city services most needing improvement. 13% of respondents said these services were poor. More respondents said housing repair services were poor or average than said this service was good.

# Survey Responses

## 5: What needs to be improved in the city services you rated "average" or "poor"?

Comment	# of residents with a similar comment
"Housing repair."	7
"There are some places that still flood."	6
"Enforcement/regulation of large apartment complexes that have fallen into disrepair and contribute to litter in surrounding areas."	4
"The back side of Waterworks Park is not taken care of... it is poorly mowed and has fallen trees that will burn if given a chance."	3
"Local park needs better patrols and lighting."	2
"Street lighting on Keeler along the creek area. We walk our dogs at night and there are foxes and coyotes in the woods."	2
"Increased police presence."	2
"4th of July 'no fireworks' law needs to be enforced."	1
"Police are always wandering around looking for someone to harass."	1
"There are many trees on this street and leaves in the neighborhood are sometimes raked to the street, which can fill up the storm drain."	1
"Ott Mill is falling apart and has broken windows from vandalism."	1
"The train gives off a lot of smoke and makes too much noise"	1
"Traffic laws need to be enforced."	1

# Survey Responses

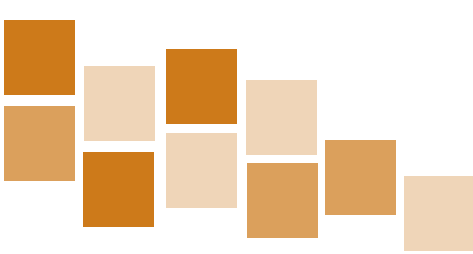
**6: Is there a city service that your neighborhood needs that is not provided?**

**33%**  
Yes

**67%**  
No

## 7: Identify the needed service

Comment	# of residents with a similar comment
"Clean, brushhog, and drain stormwater from the southeast side of Waterworks Park."	■ ■ ■
"Better enforcement of yard maintenance rules."	■ ■ ■
"Mill Creek flood plan."	■ ■
"Community events: bike group, volunteering, neighborhood watch, etc. Things to get involved and get to know your neighbors."	■
"RideKC bus stop near Olathe Community Center and Downtown Library."	■
"More tree service."	■
"Finish and continue sidewalks."	■
"That the train does not park next to our houses."	■
"Curbside glass recycling."	■



# Survey Responses

## 8: What do you like most about living in your neighborhood?

Comment	# of residents with a similar comment
"It is quiet and safe."	20
"Our neighbors."	15
"Love being close to the downtown area."	7
"It is more affordable than other areas."	5
"Old original neighborhood has character!"	4
"Tall trees and shady yards."	4
"Close to Waterworks Lake."	3
"Diverse neighborhood."	2
"No HOA."	2
"New streets and lights and sidewalks."	1





# Survey Responses

## 9: What changes would most improve your neighborhood?

Comment	# of residents with a similar comment
"Tree trimming."	5
"Safety at Waterworks Park."	4
"Landlords and property owners being held accountable for lack of maintenance."	4
"Enforcing property maintenance."	4
"More and better maintained sidewalks with street lighting."	3
"Not having the train blow its horn late at night. And it moves too slow, cutting off a lot of streets."	3
"Less racist neighbors."	2
"We have lots of feral cats that I feel animal control could assist with."	2
"Complete sidewalks along Dennis and Keeler."	2
"Better streetlights along Keeler."	2
"AcCess to Waterworks Park from Keeler."	2
"Mill Creek flood plan."	2
"Better rain management."	2

# Survey Responses

## 9: What changes would most improve your neighborhood?

Comment	# of residents with a similar comment
"Good, affordable places to eat around downtown Olathe - a local breakfast, lunch, or dinner place would be great."	2
"A code for old broken vehicles sitting out."	2
"More police patrols."	2
"Better roads."	2
"A grocery store that is close enough for a walk. Since Dillon's closed there is nothing nearby."	1
"Speed bump / children at play sign on S. Keeler St."	1
"Extend walking trails down to Ott's Mill and make that into a park/ community center."	1
"More RideKC bus stops."	1
"Tenant protections for renters like that have in KCMO."	1
"No more multifamily housing."	1
"Stop investors buying houses that make families not able to affordable ownership."	1
"Improving the already existing businesses off Dennis."	1
"I'm very happy with our neighborhood."	3

# Survey Responses

## 10: Do you have any other comments, questions, or concerns?

Comment	# of residents with a similar comment
"I just want to say, we really do love this neighborhood!"	5
"Trains blow their horns at night since this crossing is apparently not residential."	3
"So excited for the new library."	2
"Love the street and curb updates, and the new street lights and fire hydrants."	2
"Contacted evergy about my neighbors' trees on wires - very loose poles"	1
"I've noticed many of the apartment complexes don't have their trash removed very often. Piles of furniture and debris will sit for months."	1
"Would like a farmer's market."	1
"I really like living in Olathe and all the public services. The only reason I'd move away is if the rent keeps going up."	1
"Love Olathe. Just asking as we continue the beautification of our downtown hold the surrounding properties to the same accountability."	1



# Resources

Click on the links (any word that is underlined) to learn more about each resource.

## Healthy Neighborhood Grants

- Community Engagement Grant - up to \$2,000 - for neighborhood block parties, music events, classes, and other events that connect neighbors.
- Neighborhood Beautification Grant - up to \$4,000 - for community gardens, pocket parks, neighborhood clean-ups, and other projects that enhance neighborhoods.

## Housing Rehabilitation

- Deferred Loan Program: income-eligible homeowners can apply for an interest-free deferred loan to make major home repairs.
- Emergency Repair Program: income-eligible homeowners can apply for a grant for repairs that would pose a threat to their health and safety.
- Accessibility Modification Program: income-eligible homeowners with physical limitations can apply for a grant to remove structural barriers from their home.

## Neighborhood Traffic Safety

This program is designed to resolve traffic issues such as speeding and illegal parking.

## Community Enhancement

Otherwise known as Codes Enforcement, these staff inspect properties for exterior code violations and require corrections. Submit a codes concern at the link above.

## Stormwater Cost Share Program

The program helps cover the cost of materials, equipment, and labor with a 50 percent match for expenses on the following:

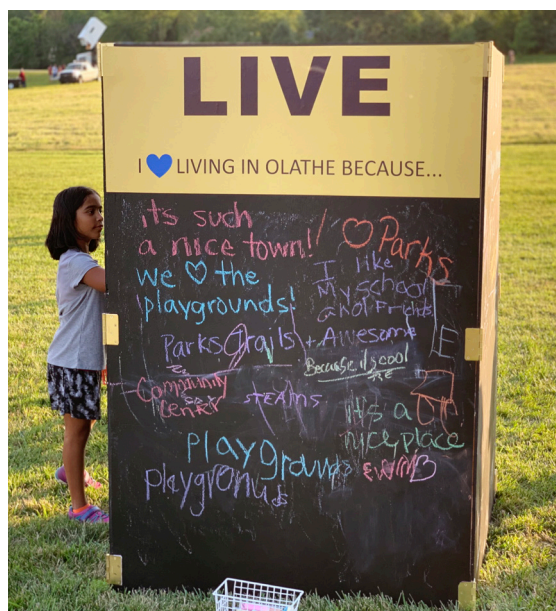
- Rain gardens, bioswales, stream buffers, or native plantings, up to \$1,000.
- Rain barrels, up to \$75 each. Limit: two rain barrels per household.

## Snow Removal Assistance

The Snow Brigade operates as a volunteer service for elderly or disabled Olathe residents who request snow removal.

## City of Olathe Contacts

City of Olathe - Main Line	913-971-8600
Planning Division	913-971-8750
Housing Rehabilitation	913-971-7900
Community Enhancement	913-971-9880
Stormwater	931-971-9071
Neighborhood Traffic Safety	913-971-5081
Snow Removal Assistance	913-971-8566
Utilities & Trash	913-971-9311



For additional information, contact the City of Olathe Planning Division at [planningcontact@olatheks.org](mailto:planningcontact@olatheks.org) or (913) 971-8750