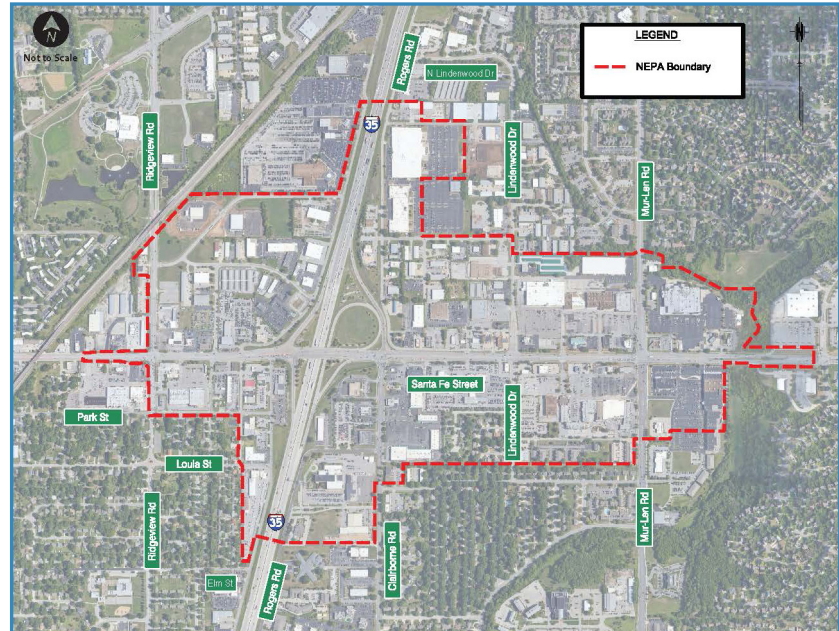


Project Overview

The City of Olathe is conducting an Environmental Assessment (EA) on the I-35/Santa Fe interchange to identify and review improvement alternatives. This corridor has one of the highest average daily traffic volumes in the Kansas City Metro. As the area continues to grow and redevelop, the I-35/Santa Fe interchange and corridor must enhance safety and accommodate ever-increasing traffic.



Project Background

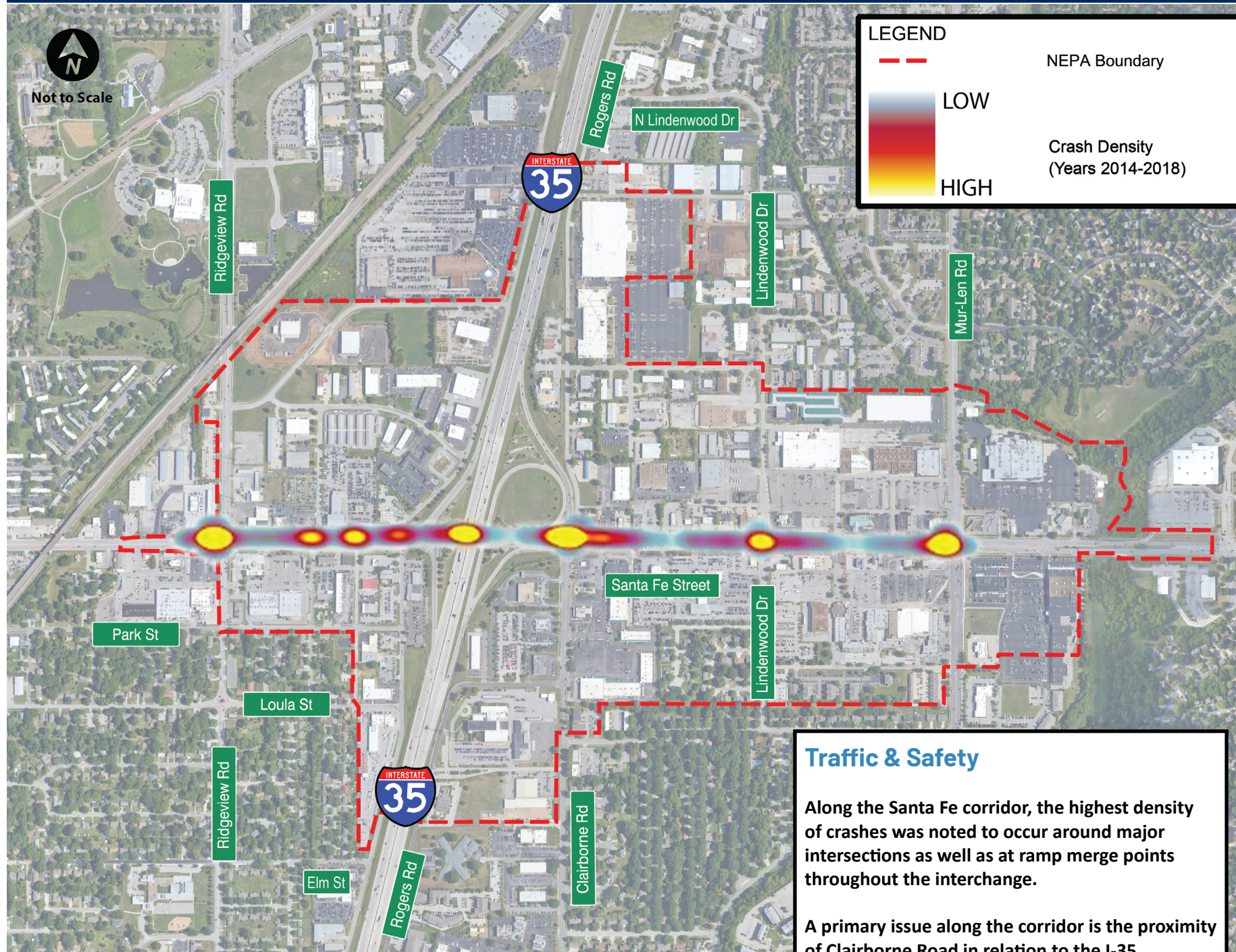
The City conducted a study to establish an overall vision for the Santa Fe Corridor from Ridgeview to Mur-Len. As part of the study, the City of Olathe conducted a survey in November 2019 to understand how the public uses Santa Fe and the improvements they would like to see. Nearly 2,300 people took the survey, confirming this is an important corridor to the community. 87% selected Safety or Congestion as the number one priority for Santa Fe.



Based on preliminary input and work during the Corridor Visioning Study, the City is moving forward to evaluate transportation infrastructure improvement alternatives. Potential improvements that may be considered and evaluated during the environmental process include but are not limited to:

- Interchange Reconfiguration
- Santa Fe Corridor Widening
- Local Access and Circulation

PROJECT LOCATION



The NEPA boundary extends from west of Ridgeview to east of Mur-Len and from as far south as Elm Street up to just north of Spruce. This boundary defines the project area for which associated NEPA analysis may take place.

Traffic & Safety

Along the Santa Fe corridor, the highest density of crashes was noted to occur around major intersections as well as at ramp merge points throughout the interchange.

A primary issue along the corridor is the proximity of Clairborne Road in relation to the I-35 northbound ramps.

What is an Environmental Assessment?

Under the National Environmental Policy Act of 1969 (NEPA), a federal law, projects that may involve federal funding or require a federal action must evaluate potential impacts to the natural and manmade environment. For this Project, the evaluation will be conducted and documented in an Environmental Assessment (EA). EAs are designed to help agencies, elected officials and the public make sound decisions.

The environmental process began in June 2021 and is expected to be completed by summer 2023. The public will be informed of progress and the status of the Project at key milestones. This will also provide the opportunity for the public to provide input.

Purpose & Need

A Purpose and Need Statement describes the transportation problems that a proposed project is to address. This statement provides a description of the purpose of the I-35/Santa Fe Street corridor project and demonstrates the need for improvements the proposed project is to address within the study area.

The purpose of the proposed improvements is to accommodate increased travel demands and improve safety at the I-35 and Santa Fe Street interchange and in the broader Santa Fe Street corridor from Ridgeview Road to Mur-Len Road.

The proposed improvements are needed to:

-  Improve existing safety conditions through improved traffic operations, geometric improvements, and conformity with state and local access management policies;
-  Improve existing and future traffic operations at the I-35 and Santa Fe Street interchange ramp terminals and at intersections in the Santa Fe corridor;
-  Accommodate transportation mode choices and active transportation modes over I-35 and in the corridor, and
-  Support land use planning for economic development and redevelopment and growth.

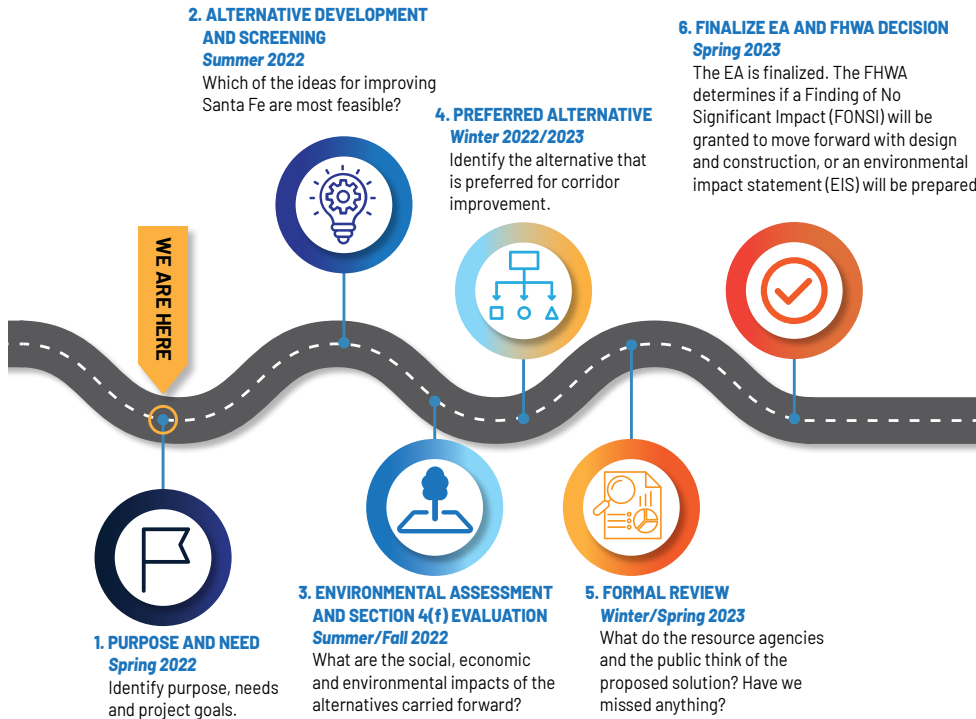
We want your input!

Please provide any input or let us know if you have changes or additions you would make to the Purpose and Need. Scan the QR code below to submit a comment on our Comment Form.



What is the Environmental Process?

This graphic outlines the steps for developing the Environmental Assessment (EA). We are currently in step 1 to identify the Purpose and Need, outlined in the graphic below. The next step in the process is for the Project Team to develop and screen the corridor improvement alternatives that meet the Purpose and Need for the Project. This will lead to a recommendation of a Preferred Alternative for the Project.



Once a Preferred Alternative is identified, the Project Team will evaluate the social, economic and environmental impacts to the natural and manmade environment. The Team will document the analysis and findings in the EA document. The public will be asked for input throughout the EA process.

The Federal Highway Administration (FHWA) determines if a Finding of No Significance Impact (FONSI) will be granted to move forward with design and construction, or an Environmental Impact Statement (EIS) will be prepared. The environmental process began in June 2021 and is expected to be completed by summer 2023.

Overall I-35 & Santa Fe Development Schedule

The City of Olathe is engaged in a detailed, well-planned initiative to move Santa Fe Corridor improvements forward. In partnership with Kansas Department of Transportation (KDOT), this initiative means Olathe can deliver significant improvements to the state and local economies and transportation network. Olathe has currently committed \$4.5M in the CIP to advance preliminary engineering. Below is a proposed tentative schedule.

I-35 & Santa Fe Corridor Development Plan

	2022				2023				2024			
	Q1	Q2	Q3	Q4	Q1	Q2	Q3	Q4	Q1	Q2	Q3	Q4
NEPA/Break-in-Access (Began 2021)		●		●	●							
Preliminary Design (Began 2021)					●							
Federal Grant Opportunities		●	●	●		●	●	●		●	●	●

● Public Meetings

● City of Olathe Funded



For more information, please contact:

Therese Vink, P.E.
Assistant City Manager
City of Olathe Public Works

913-971-9032
tmersmann@olatheks.org