

SPRING 2022



Eastbrooke Park

RESIDENTS AFFIRM OLATHE CONTINUES AS A LEADING CITY

The City of Olathe is setting the standard for municipalities regionally and across the nation with resident satisfaction at or near the top in the recently released 2021 DirectionFinder® survey.

Olathe residents say the overall quality of City services and the quality of customer service they receive are in the nation’s top 10 percent among cities with 100,000 or more in population. The value received for tax dollars is also rated in the nation’s top 10 percent.

“While national websites and publications continually affirm Olathe’s position as one of America’s best places to live, it’s more important that our taxpayers and residents feel the same way. Because residents tell us where they want resources

to go, our employees are able to deliver at exceptional levels,” said City Manager Michael Wilkes. “2021 was a testament to our staff’s resilience and determination. We could not be more proud of the City of Olathe employees who continue to set the standard for excellence in public service.”

Residents’ highest City services satisfaction levels were in the overall quality of police, fire, and emergency medical services; the solid waste system; parks and recreation programs and facilities; the libraries; and water and sewer utilities.

Additionally, the City’s efforts to keep residents informed increased significantly. These areas received a five percent or greater increase in satisfaction over 2020 survey responses.

Continued on page 3

INSIDE THIS ISSUE

- Mayor’s Message 2

- Your City Budget 3

- Olathe Live! Dates 4

- Library News 4

- 2022 Olathe Street Preservation 5

- Property Maintenance Reminders 6

- Yard Waste Urban Myths 7

Visit [OlatheKS.org](https://www.OlatheKS.org) and click on **NEWS** for additional Olathe news.



MAYOR'S MESSAGE

GET ACTIVE OLATHE!

One goal for quality of life in the City of Olathe is optimizing residents' access to physical activities for a healthy community. Providing opportunities for all ages and abilities to participate in healthy activities is important, especially since about 80 percent of U.S. adults and adolescents are insufficiently active, according to the American Medical Association. In addition to reducing the risk for many chronic diseases, physical activity can make you feel, function, and sleep better. Walking about 10 miles a week, push-ups each morning and simple stretches are my tickets to keeping active.

If you'd like to become more active, I encourage you to try one or several ways to rev up a healthy lifestyle around Olathe. Take advantage of the trails at Johnson County's new Cedar Niles Park in west Olathe or Heritage Park to the south. At Stagecoach Park, enjoy the paved 1-mile trail around the park. Next door, the Olathe Community Center extends opportunities

for individuals and groups, such as weekly drop-in activities like pickleball, swimming, a fitness floor, or exercise classes.

Children and adults of all abilities are invited to learn how to swim through our aquatics program lessons. This lifelong skill allows you to enjoy our water amenities throughout the City. Staff is working now to hire lifeguards and other staff to safely open and operate the outdoor pools and Lake Olathe's beach and marina.

Here's a quick update on other park projects we're working on:

Residents continue to provide input to create a Trails and Greenways Guiding Plan to identify desired trail system improvements. We expect to have a draft plan available for public review later this summer.

Several enhancements are underway at Calamity Line Park, 901 W. Santa Fe St. Kids will want to climb aboard the new train play structure at the park's renovated playground. Improvements to the park's walking trail and new shelter flower beds are nearly complete. The Cedar Creek Streamway Trail is progressing nicely with all trail passages finished under

existing bridges. This trail will ultimately connect Cedar Lake and Lake Olathe, and will tie into Johnson County's Cedar Niles Park Trail northwest of Lake Olathe. This will give residents easier access to the County's new 4.5-mile single-track trail for mountain biking and hiking at Cedar Niles Park.

The people of Olathe are what makes this community so special, and we want you to be healthy. We will continue to consider and invest in ways to serve your needs for active lives. I hope to see you on the trail!

Sincerely,

John Bacon
John Bacon
Mayor



Trails and Greenways Public Meeting

OLATHE ACTIVE BY THE NUMBERS

- 22,465** Sports program participants in 2021
- 26** Neighborhood parks
- 13** Community parks
- 40** Park shelters
- 43** Miles of trails
- 20** Soccer fields
- 18** Softball fields
- 17** Baseball fields
- 5** Swimming pools



NEW WARD 1 CITY COUNCILMEMBER

Robyn Essex is the new Olathe Ward 1 City Councilmember, sworn in on March 15. The City Council appointed her to finish Larry Campbell's term, who retired in Dec. 2021.

Councilmember Essex has served on the Olathe Planning Commission, as a precinct committee woman, in Olathe Rotary Club, and on the Certified Emergency Response Team. She is a graduate of the Olathe Civic Academy, Olathe Public Schools Citizen Education Academy, and the Eisenhower Leadership Series.

Councilmember Essex has called Olathe home for 36 years. She and her husband, Steve, have three sons.

RESIDENTS AFFIRM OLATHE CONTINUES AS A LEADING CITY (CONTINUED FROM PAGE 1)

They include:

- The availability of City programs/services information
- The City’s efforts to keep you informed about local issues
- Access to public meetings (City Council, Planning Commission) through cable/webstream on **OlatheKS.org**
- The responsiveness of the City’s social media page
- Communication with non-English speaking persons
- Communication with seniors

Residents continue to give traffic flow the highest priority, 63 percent, followed closely by maintenance of city streets/buildings/facilities, 59 percent, according to survey participants.

Olathe’s resident satisfaction results have increased more during the past two decades than any other city, according to Chris Tatham of ETC Institute, who administered the survey.

“Olathe continues to be one of the absolute best performing cities in America,” said Tatham. “Satisfaction levels in nearly all key categories tower above regional and national averages.”

The City of Olathe has used the annual DirectionFinder® survey since 2000 to track and benchmark performance and to help make services delivery and resource allocation decisions.

The entire report can be viewed at **OlatheKS.org/Performance**



YOUR CITY BUDGET = COMMUNITY PRIORITIES

The City of Olathe will soon allocate resources to meet 2023 community priorities and advance the Olathe 2040: Future Ready Strategic Plan. You’re invited to join the budget process when it kicks off this spring.

Visit **OlatheKS.org/Budget** to learn about public involvement opportunities, including City Council budget workshops. You’ll also find budget FAQs, and an archive of budget documents.

You can also provide comments and ask questions of budget staff at **OlatheKS.org/OlatheConnect**



A Trails and Greenways Guiding Plan will recommend improvements for Olathe’s trail network.

Learn more at **OlatheKS.org/TrailsGreenways**

IMPORTANT CITY PHONE NUMBERS

Regular Business Hours: Monday - Friday, 8 a.m. - 5 p.m.
OlatheKS.org/ServicesDirectory

EMERGENCY911

Emergency TDD/TTY Calls911

GENERAL INFORMATION
(TDD/Voice) 971-8600

CUSTOMER SERVICE
(Billing, Trash, Water & Sewer)
 1385 S. Robinson..... 971-9311

FIRE ADMINISTRATION
(Non-Emergency)
 1225 S. Hamilton Circle971-7900

OLATHE PUBLIC LIBRARY - Indian Creek
 16100 W. 135th St. 971-6835

OLATHE PUBLIC LIBRARY - Temporary Location
 1078A W. Santa Fe 971-6850

OLATHE PARKS & RECREATION /COMMUNITY CENTER (TDD/Voice)
 1205 E. Kansas City Rd 971-8563

POLICE DEPARTMENT
 501 E. 56 Highway 971-7500

HUMAN RESOURCES
 100 E. Santa Fe 971-8735

OLATHE CITY COUNCIL

John Bacon
 Mayor
 913-971-8500
 (City office)
jbacon@olatheks.org

Wes McCoy
 At-Large
 913-269-1035
rwmccoy@olatheks.org

Kevin Gilmore
 At-Large
 Mayor Pro Tem
 913-768-8285
kpgilmore@olatheks.org

Robyn Essex
 Ward 1
 913-971-6368
rrsessex@olatheks.org

Adam Mickelson
 Ward 2
 913-538-1197
amickelson@olatheks.org

LeEtta Felter
 Ward 3
 913-971-6995
lfelter@olatheks.org

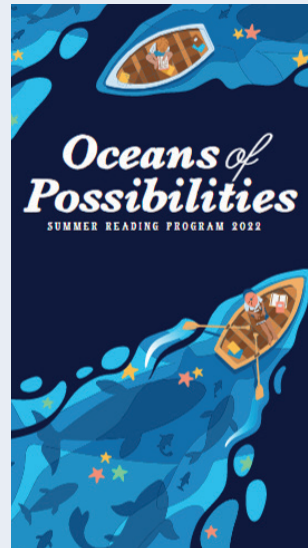
Marge Vogt
 Ward 4
 913-269-0625
mvogt@olatheks.org



2022 SHOWS
JUNE 10
JUNE 17
JULY 8
JULY 15
JULY 29

All shows are at Stagecoach Park and start at 7 PM

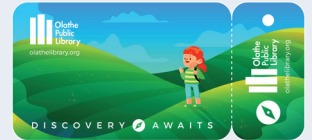
Visit OlatheKS.org/OlatheLive for the 2022 artist lineup



Read books, attend cool programs, and win prizes during “Oceans of Possibilities,” the Olathe Public Library’s Summer Reading Program. Kids can earn a free book and teens can win great prizes by reading titles of their choice from May 23 through August 6. Adults may also get in on the fun by winning prizes of their own. Participate virtually or in-person. To learn more and to register, visit OlatheLibrary.org/SummerReading

POOL DISCOUNT

Get a discount at the pool this summer with your Library Card! Show your Olathe Public Library card at Mill Creek, Frontier, or Oregon Trail Pools and get \$2 off an admission. Discount is one person per card.



NEW LIBRARY LOCKERS OFFER CONVENIENCE

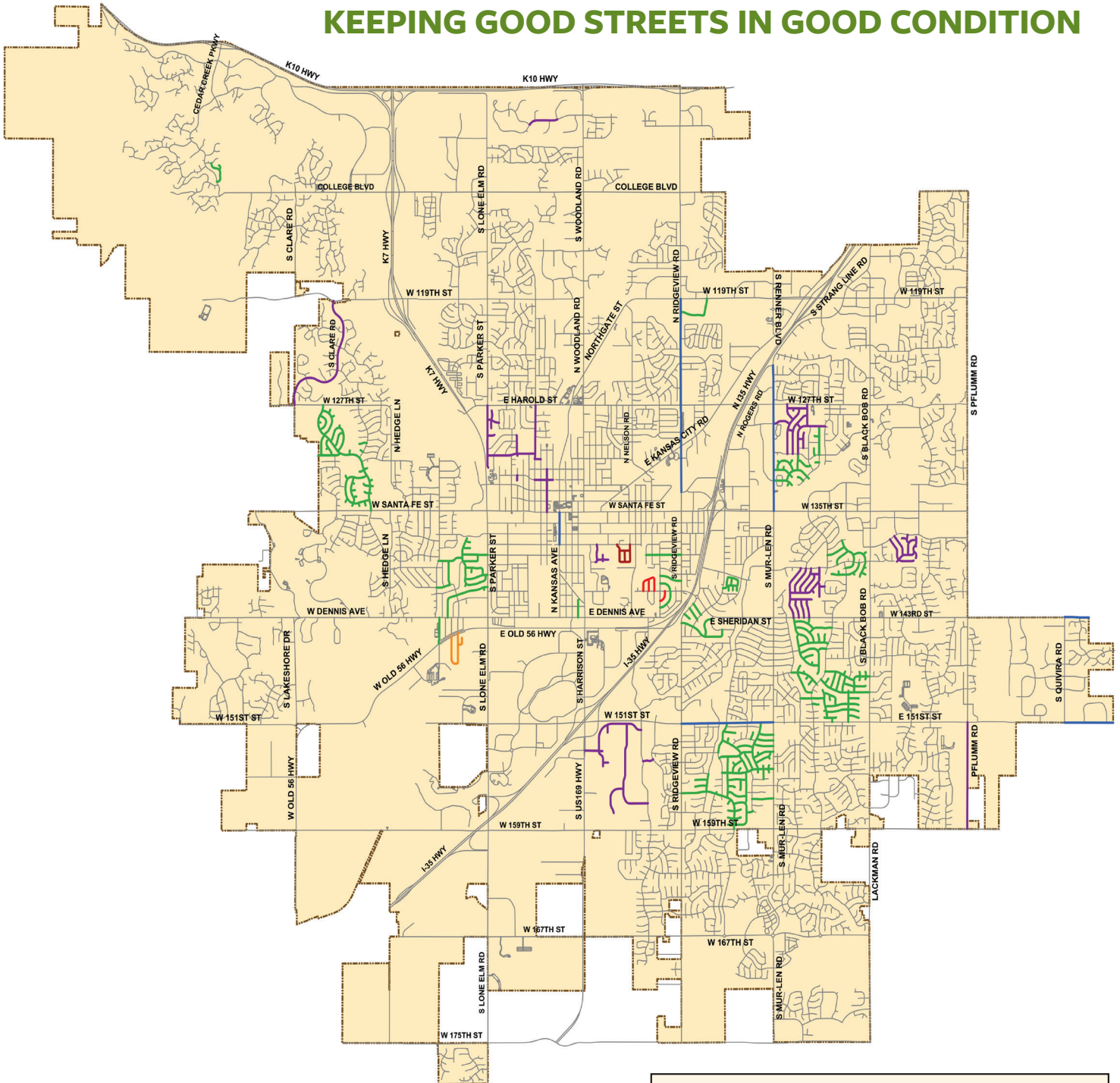
Library customers have a new option for picking up holds with the opening of Fire Station 8, 14700 S. Lakeshore Dr. Recently installed self-serve library lockers there provide greater convenience for customers who live in southwest Olathe.

Other library locker locations include Fire Station 6, 24200 W. College Blvd.; Fire Station 7, 16110 S. Mur-Len; and the Olathe Community Center, 1205 E. Kansas City Rd.

Fire Station lockers can be accessed from 7 a.m.-8 p.m. daily. Community Center lockers can be accessed whenever the Community Center is open.

All library locker locations also have outdoor return boxes. To learn more about using library lockers, please visit OlatheLibrary.org/Lockers

KEEPING GOOD STREETS IN GOOD CONDITION



116 lane miles in Olathe are scheduled for street preservation resurfacing in 2022.

Three lane miles are scheduled for street reconstruction.

Street preservation is funded with the Street Maintenance Sales Tax, General Fund Cash, and General Obligation Bonds.

LEGEND

- Arterial Mill and Overlay
- 143rd Street and 151st Street Ultra-Thin Bonded Asphalt Project
- Local & Collector Street Mill and Overlay Projects
- Micro Surface Projects
- Highland Park Street Reconstruction
- Ridgeview West Street Reconstruction
- Provence Village Street Reconstruction

For every \$1 spent on street preservation it saves \$8 spent on future street reconstruction.

SOLID WASTE DRIVER SHOWS KINDNESS

During February’s freezing temperatures, City of Olathe solid waste driver Patrick Keegan was working his route when he noticed an elderly woman sitting on the edge of her driveway. He quickly got out of his truck to check on her. She had slipped on ice and was unable to get up, leaving her stranded in the bitter cold for nearly 20 minutes. Patrick made sure she wasn’t injured and helped her inside.

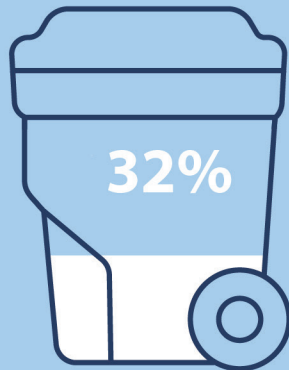
Patrick continued his route, but he couldn’t help thinking of this woman. He happened upon a spot on the road where a snowplow had spilled some extra rock salt. Patrick scooped up a pile, returned to the woman’s house, and spread it on the icy patch where she had fallen. In addition, Patrick alerted his supervisor to the situation and a follow up welfare check was made on the resident to ensure the woman’s safety.



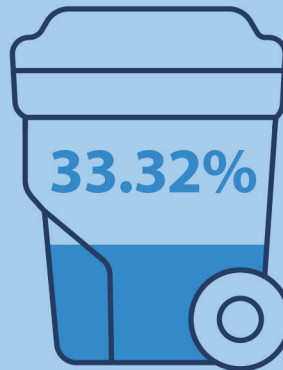
These are the moments that set our community apart. Not only did Patrick do the right thing, but he continued to show his heart through every action that followed. Thank you, Patrick, for being a shining example of excellence in the City of Olathe!



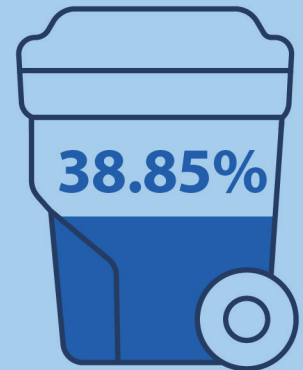
2021 Waste Diversion Rates



National Average



Johnson County



Olathe

PROPERTY MAINTENANCE

We all have a role to play to keep Olathe a beautiful city.



LAWN MAINTENANCE

- Grass and weeds may not exceed eight inches in height.
- Property owners must maintain adjacent rights-of-way and easement areas within property lines.

Olathe Municipal Code Chapter 6.09.050



NUISANCE ITEMS

- Spare materials, furniture, trash, etc. may not be stored on the exterior of the property.
- To schedule a bulk pick-up, call 913-971-9311 or visit [OlatheKS.org/Trash](https://www.olatheks.org/Trash) at least one day prior to the pick-up date.

Olathe Municipal Code Chapter 6.06.040

SPRUCING UP FOR SPRING

Get a little help with your spring cleaning by taking old or unused household hazardous waste items to the next drive through collection event.

Saturday, May 14

8 a.m.-2 p.m.

1420 S. Robinson Dr.

Appointments available on weekdays.

Find more information at
OlatheKS.org/HHW

Items Allowed

Aerosol cans
Antifreeze
Bathroom cleaner
Carpet cleaner
Cooking oil
Diesel fuel
Fertilizer
Floor cleaner
Floor polish
Fluorescent bulbs
Gasoline

Kerosene
Motor oil
Paint
Paint thinner
Pesticide
Solvent
Stain
Thermometers
Thermostats
Varnish
Wood preservative

YARD WASTE URBAN MYTHS

“IT’S OK TO DUMP GRASS CLIPPINGS INTO STREAMS.”

NOT TRUE — as with many things in life, too much can be a bad thing. Dumping leaves and grass clippings in or near a stream is illegal. It also overwhelms the system, adds excess nutrients into our streams and lakes, and can lead to potentially harmful algae blooms.

“IT’S OK TO DUMP MY YARD WASTE IN THE STORM DRAIN.”

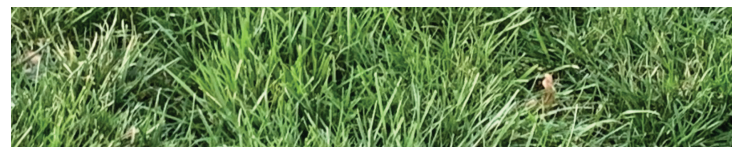
NOT TRUE — it is illegal to dump anything, other than clean water, into the storm drain. Not only is it bad for water quality because stormwater is not treated, it also causes clogging in catch basins which could result in flooding on your street and increased maintenance costs.

“BLOWING YARD WASTE INTO THE STREETS, ASSUMING THE CITY WILL TAKE CARE OF IT.”

IS NOT ONLY FALSE – IT IS ILLEGAL

The City of Olathe offers curbside yard waste pick-up instead. Refer to OlatheKS.org/YardWaste for more information.

The City of Olathe does not have a combined stormwater system and sanitary sewer system. In other words, unlike the water used in our homes, storm/rain water is never treated. It is returned directly to the environment.



Olathe LINK

P.O. Box 768
Olathe, Kansas 66051-0768
913-971-8700

OlatheConnect

Look up information or submit a service request 24/7.
OlatheKS.org/OlatheConnect

Stay Informed

Receive Olathe news and updates by email or text message. **Click on e-notification or the envelope icon at OlatheKS.org.**

PRSRST STD
U.S. POSTAGE
PAID
Permit No. 323
Olathe, KS

CONNECT WITH US



Apps available
on the App Store
and Google Play

OLATHE CONNECT **OLATHE** TrashDay



SATURDAYS

April 30 to October 22

WEDNESDAYS

May 4 to September 21

TWO LOCATIONS

Stagecoach Park

1205 E. Kansas City Rd.

Black Bob Park

14500 W. 151 St.

Operating from 7:30 a.m.
until items are sold.