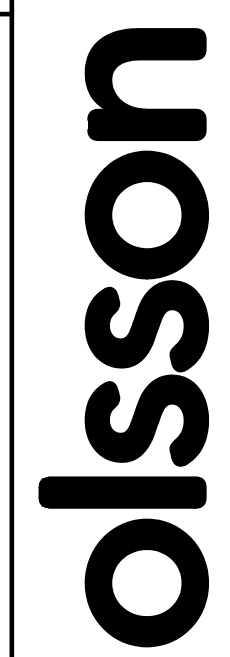
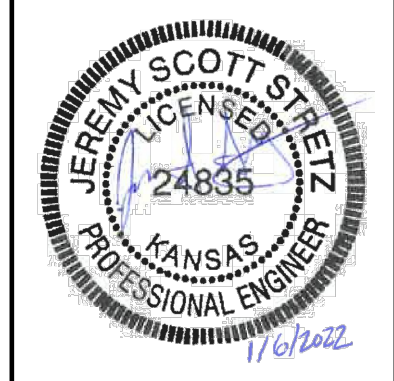


STATE	PROJECT NO.	YEAR	PAGE NUMBER	TOTAL PAGES
KANSAS	46 N-0722-01	2022	185	302

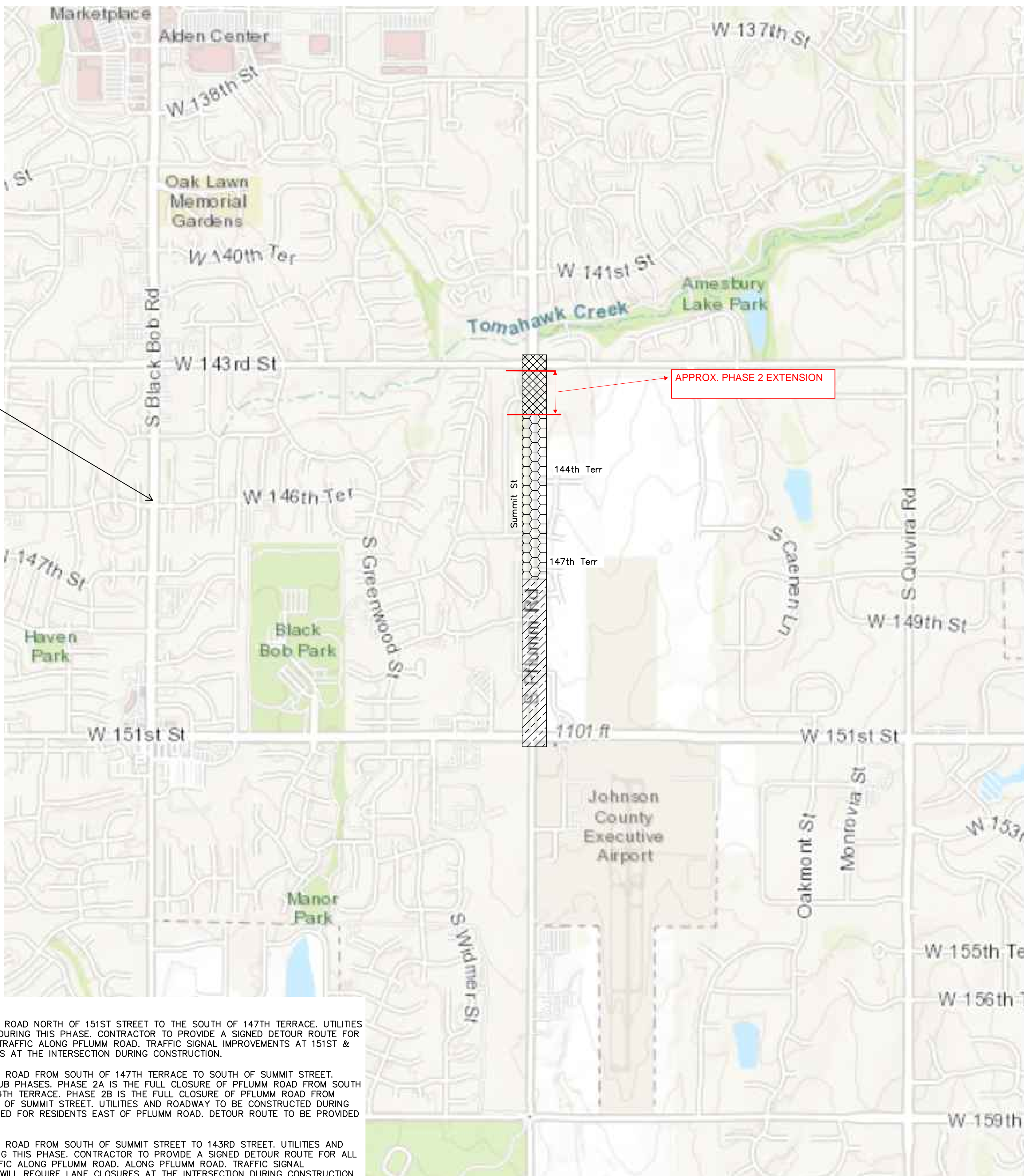


7301 West 133rd Street, Suite 200
Overland Park, KS 66213-4760
TEL 913.381.1170
FAX 913.381.1174
www.olsson.com



REV. NO.	DATE	REVISIONS DESCRIPTION	BY

TRAFFIC CONTROL SHEETS	2022
PFLUMM ROAD, 143RD STREET TO 151ST STREET ROADWAY IMPROVEMENTS	
OLATHE, KANSAS	
drawn by: JSC	
checked by: JMB	
approved by: JSS	
QA/QC by: SLI	
project no.: 020-0217	
drawing no.: F TC 200217	
date: 01.06.2022	



BLACKBOB RD IS OFFICIAL DETOUR ROUTE

APPROX. PHASE 2 EXTENSION

CONSTRUCTION SEQUENCE:

PHASE 1.) FULL CLOSURE OF PFLUMM ROAD NORTH OF 151ST STREET TO THE SOUTH OF 147TH TERRACE. UTILITIES AND ROADWAY TO BE CONSTRUCTED DURING THIS PHASE. CONTRACTOR TO PROVIDE A SIGNED DETOUR ROUTE FOR ALL TRAFFIC INCLUDING RESIDENTIAL TRAFFIC ALONG PFLUMM ROAD. TRAFFIC SIGNAL IMPROVEMENTS AT 151ST & PFLUMM WILL REQUIRE LANE CLOSURES AT THE INTERSECTION DURING CONSTRUCTION.

PHASE 2.) FULL CLOSURE OF PFLUMM ROAD FROM SOUTH OF 147TH TERRACE TO SOUTH OF SUMMIT STREET. PHASE 2 TO BE BROKEN OUT INTO SUB PHASES. PHASE 2A IS THE FULL CLOSURE OF PFLUMM ROAD FROM SOUTH OF 147TH TERRACE TO SOUTH OF 144TH TERRACE. PHASE 2B IS THE FULL CLOSURE OF PFLUMM ROAD FROM SOUTH OF 144TH TERRACE TO SOUTH OF SUMMIT STREET. UTILITIES AND ROADWAY TO BE CONSTRUCTED DURING THIS PHASE. ACCESS TO BE MAINTAINED FOR RESIDENTS EAST OF PFLUMM ROAD. DETOUR ROUTE TO BE PROVIDED TO DRIVERS ALONG PFLUMM ROAD.

PHASE 3.) FULL CLOSURE OF PFLUMM ROAD FROM SOUTH OF SUMMIT STREET TO 143RD STREET. UTILITIES AND ROADWAY TO BE CONSTRUCTED DURING THIS PHASE. CONTRACTOR TO PROVIDE A SIGNED DETOUR ROUTE FOR ALL TRAFFIC INCLUDING RESIDENTIAL TRAFFIC ALONG PFLUMM ROAD. ALONG PFLUMM ROAD. TRAFFIC SIGNAL IMPROVEMENTS AT 143RD & PFLUMM WILL REQUIRE LANE CLOSURES AT THE INTERSECTION DURING CONSTRUCTION.

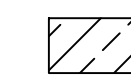
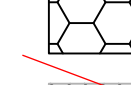

UPDATE NOTE, 9/9/2022: AT CONTRACTOR'S REQUEST, THE CITY HAS DECIDED TO MOVE FORWARD WITH EXTENDING PHASE 2. PHASE 2 WILL NOW REQUIRE A CLOSURE OF PFLUMM ROAD FROM SOUTH OF 147TH TERRACE TO JUST SOUTH OF 143RD STREET. WEATHER PERMITTING, PHASE 2 IS PLANNED TO BE OPEN TO TRAFFIC BY THE END OF THE YEAR.

GENERAL NOTES:

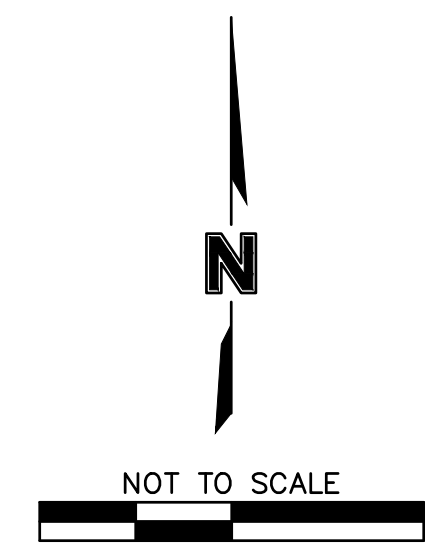
1. REFERENCE STANDARD TRAFFIC CONTROL DETAIL SHEETS FOR WATERLINE AND STORM SEWER CONSTRUCTION.

NOTE: ALL UPDATES ARE PENDING WEATHER AND MATERIAL AVAILABILITY.

LEGEND

-  Phase 1 Traffic Control
-  Phase 2 Traffic Control
-  Phase 3 Traffic Control

SEE PHASE 2 EXTENSION UPDATES



DWG: F:\2020\0001-0500\020-0217\40-Design\AutoCAD\Final Plans\Streets\TFC\TRAFFIC CONTROL PLAN\F_TC_200217.dwg
 DATE: Jan 07, 2022 10:08am
 USER: jeek
 F_PWT-BASE_0200217
 T_XTOPO_0200217
 V_XTOPO_0200217
 F_PBLK_0200217