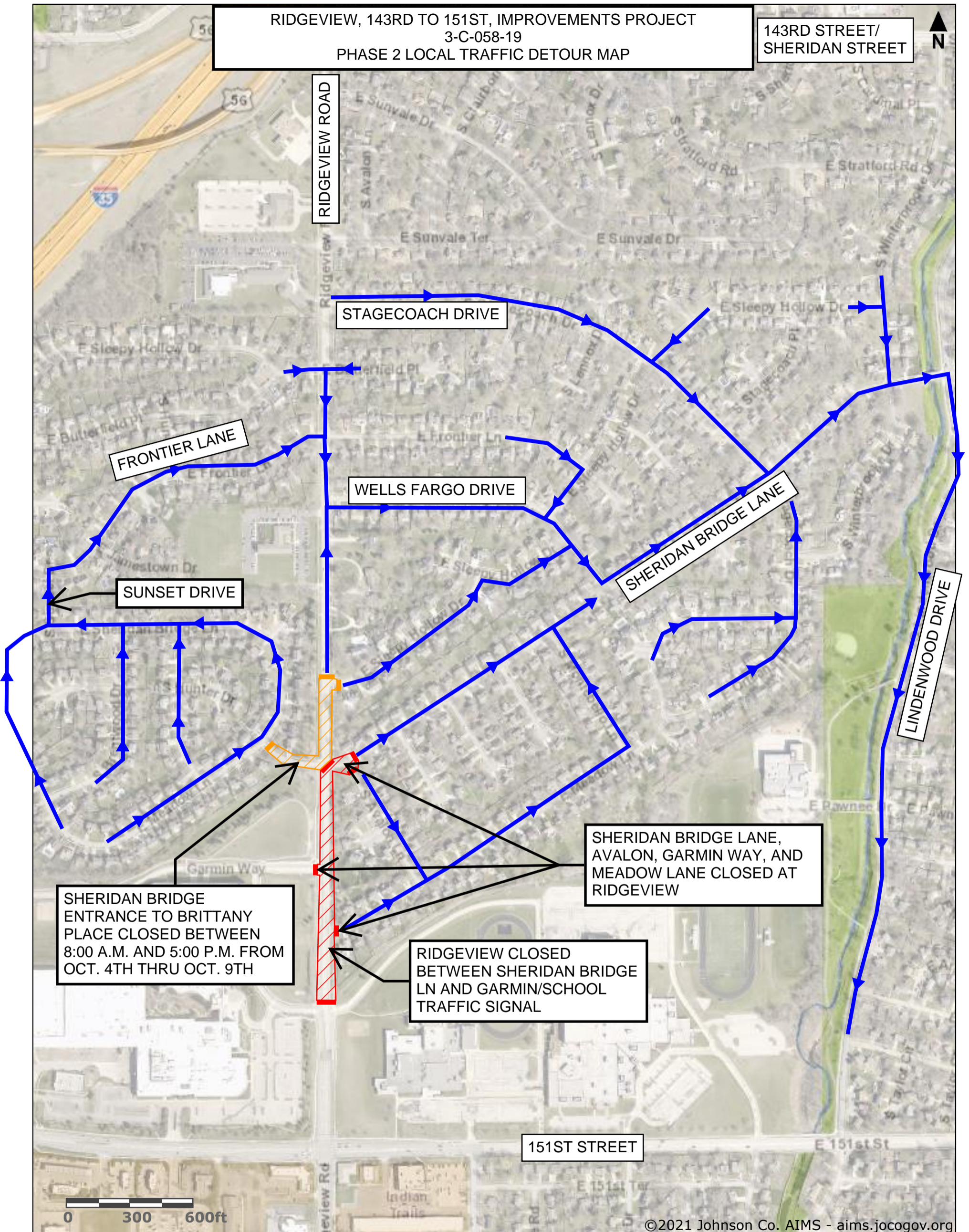


RIDGEVIEW, 143RD TO 151ST, IMPROVEMENTS PROJECT  
3-C-058-19  
PHASE 2 LOCAL TRAFFIC DETOUR MAP

143RD STREET/  
SHERIDAN STREET



SHERIDAN BRIDGE  
ENTRANCE TO BRITTANY  
PLACE CLOSED BETWEEN  
8:00 A.M. AND 5:00 P.M. FROM  
OCT. 4TH THRU OCT. 9TH

SHERIDAN BRIDGE LANE,  
AVALON, GARMIN WAY,  
AND MEADOW LANE CLOSED AT  
RIDGEVIEW

RIDGEVIEW CLOSED  
BETWEEN SHERIDAN BRIDGE  
LN AND GARMIN/SCHOOL  
TRAFFIC SIGNAL

151ST STREET

©2021 Johnson Co. AIMS - aims.jocogov.org

— SOUTHBOUND RIDGEVIEW RD  
LOCAL TRAFFIC DETOUR