



Lake Olathe Tri-Run

ROUTE INFORMATION

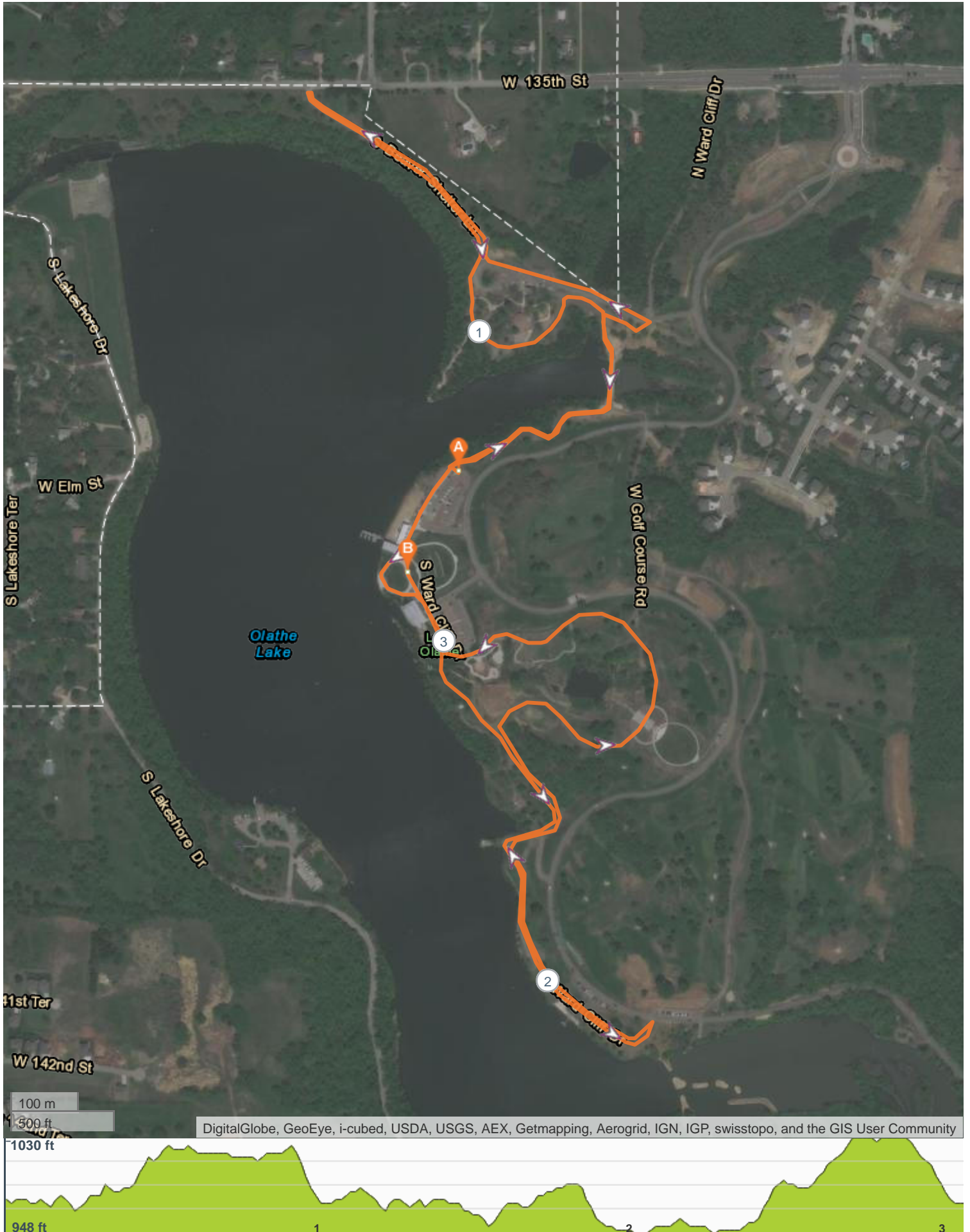


ROUTE LENGTH 3.067 miles
ASCENT 216 ft
DESCENT 219 ft
HILLS ⬆ 46.3% | ⬇ 40.7% | ➡ 13.0%
TERRAIN Mixed
START **LAT:** 38.878508, **LNG:** -94.870125



NOTES

Lake Olathe Tri-Run



ROUTE DIRECTIONS

No	Miles	Turn	Directions
1	3.067		