

## New Indian Creek Library Opens Saturday, October 19

### Join the Celebration

- 9:30 a.m. Flag Raising by Boy Scout Troop 86
- 9:45 a.m. Ribbon Cutting
- 10 a.m. Library Doors Open

### Opening Day Special Activities

#### Demonstrations

- makerspace
- gaming area
- recording studio

Olathe's new **Indian Creek Library** will have state-of-the-art library services, all on one level, and will be the largest of the three new libraries in Johnson County. Approximately 93,000 library items are planned at this location. Laptop computers and iPads will be available for use in the library.

Inviting, light-filled spaces will offer plenty of places to gather or study by yourself. Children, teens, and adults have customized spaces.

The **Indian Creek Café**, operated by Olathe's Park Street Pastry, will offer pastries, specialty coffee, and other light fare.

**Indian Creek Library, 16100 W. 135th St.**



## City Council Adopts 2020 Budget

The Olathe City Council formally adopted the 2020 operating budget Aug. 20, allocating continued funding for residents' top priorities, including street maintenance, traffic flow improvements, and public safety. Olathe's 2020 general fund budget is \$113,074,326, and the City's current mill levy is maintained.

Budget supported transportation improvements include continued street maintenance, Lone Elm Road widening, Old 56 Highway to 151st Street; Woodland Road widening, K-10 to College Boulevard; and the Mahaffie Circle extension under I-35 to improve traffic flow in the 151st Street area near Garmin.

The 2020 budget includes funds for new Fire Station 8 to serve a growing population in the city's southwest area. Construction is expected to begin this winter on the northwest corner of 148th and Lakeshore. Construction of a fire training center is also planned with completion expected next year. In 2020, three police officers will be hired to achieve the goal of having School Resource Officers assigned to each of Olathe's middle and high schools. In addition, a new community enhancement officer will assist with a growing case load of property violations, and a senior planner will support future land use planning.

Significant park improvements were completed in 2019 with new amenities at Lake Olathe and at Lone Elm Park. During 2020, work continues on Olathe's trail system expansion and neighborhood park improvements are planned.

The City Council conditionally approved the 2020 budget in 2018 as part of the City's two-year budget development cycle. The state requires formal adoption each year.

Budget documents are available at [OlatheKS.org/Budget](http://OlatheKS.org/Budget).



Find additional Olathe news at [OlatheKS.org](http://OlatheKS.org). Click on NEWS.

### Inside This Issue

Mayor's Message .....	2	Progress as Promised .....	5
Teens' Perspectives for Olathe's Future .....	3	Olathe Earth News .....	6-7
Slow Down Near Schools .....	4	Spooktober & Wild West Days .....	8



## Mayor's Message

## Looking Toward the Future



Serving as mayor of Olathe is a tremendous honor and brings great satisfaction. Surpassing this is my role of husband and father to three children. Raising our kids in the Olathe community has brought immeasurable rewards – the kind of rewards that are dear to the heart of parents as they watch their families grow and thrive.

I readily admit my heart is full when I speak of my kids. How does this happen? Our kids are shaped by the many opportunities for intellectual growth and physical health in Olathe's family-oriented community. We have excellent schools, beautiful parks and trails, fine libraries, cultural opportunities, and top-rated city services. My kids feel safe here. They have a sense of community.

Our community is filled with people who take pride in what our city offers. Best of all, many of these same people are working to ensure the future is bright for our children through strategic planning. Together, we are preparing to stay one of the nation's top performing cities. We are planning to remain one of the nation's safest cities and we look for ways Olathe's quality of life can improve.

The City of Olathe is nearing the final development stages of

our 20-year strategic plan, Olathe 2040: Future Ready. Our strategic planning has involved hundreds of citizens and City staff who care about Olathe's future.

The Olathe 2040: Future Ready strategic plan identifies overall community goals derived from public engagement and the Strategic Planning Advisory Committee's vision framework. The goals are further defined with strategies and measures, encompassing quality of life, infrastructure, economy, and exceptional services to address tomorrow's challenges. In October, we'll reveal the strategic plan at the annual State of the City Address, and it will be available for public viewing at **OlatheKS.org**.

My hope for 2040 is probably much like that of many parents. Should our children make Olathe their future home, I want them to have an even better quality of life.

Sincerely,

Michael Copeland  
Mayor

## Celebrate Lake Olathe • Friday, September 27, 5:30 p.m.



Family fun activities  
celebrating Lake Olathe's  
new features

Free event

Tours & information

Face painting, photo booth, food for purchase

Movie at the amphitheater at sunset  
Approximately 7:30 p.m.

445 S. Ward Cliff Dr. Visit **OlatheKS.org** for more information

**Komalpreet Kaur**

10th grade, Olathe East High School

*What positive qualities or community services will set Olathe apart from other cities in the year 2040?*

In 2040, I hope to see all youth more involved in their communities. I want Olathe to be a big family. Though that does sound very cliché, having everyone come together, having all neighbors be there for their neighbors will make Olathe an even better place. We all need to learn how to be nice, it's one thing that we make so complex. We need to hate less and love more because I believe hate isn't something that just comes, it is something we learn. We need to be each other's support systems.

**Akerth Jain**

10th grade, Olathe North High School

*What positive qualities or community services will set Olathe apart from other cities in the year 2040?*

Olathe currently provides great education, and prepares kids for their careers through programs such as the Olathe Advanced Technical Center or for college

through the 21st Century Academies. Olathe should continue providing these opportunities to students through 2040 and beyond. Also, Olathe should continue working on its community facilities such as the Olathe Community Center, parks, and other recreation.

**Bridget Schippers**

12th grade, St. James Academy

*What do you think will be the most pressing issue, challenge, or opportunity facing the Olathe community in the next 20 years?*

I believe that the economy will be a pressing issue for Olathe in coming years. The city must be constantly working to attract new companies, and also nurture relationships with companies who are already here. If we are able to foster a thriving economy, then the city will be attractive to young families looking for new opportunities. It's especially important that Olathe attracts young people in the next 20 years as the Kansas brain drain, a steady loss of Kansas' college graduates to other states, continues to persist. We must take as many opportunities as possible to appeal to the younger working generation.

Olathe 2040 Strategic Plan Focus Areas

The Olathe 2040 strategic plan will be unveiled to the public this fall.

**Important City Phone Numbers**

Regular Business Hours:

Monday - Friday, 8 a.m. - 5 p.m.

Except for **Emergency 911**, and unless otherwise noted

**EMERGENCY** ..... 911

**Emergency TDD/TTY Calls** ..... 911

**GENERAL INFORMATION (TDD/Voice)** .... 971-8600

**CUSTOMER SERVICE**

1385 S. Robinson ..... 971-9311

Billing, Trash, Water & Sewer

**FIRE ADMINISTRATION**

1225 S. Hamilton Circle (Non-Emergency) .... 971-7900

Printed on recyclable paper.



**OlatheKS.org/ServicesDirectory**

**OLATHE PUBLIC LIBRARY**

201 E. Park St. .... 971-6850

(Beginning Oct. 19) 16100 W. 135th St. .... 971-6835

**PARKS AND RECREATION DEPARTMENT  
OLATHE COMMUNITY CENTER**

1205 E. Kansas City Rd. (TDD/Voice) ... 971-8563

**POLICE DEPARTMENT**

501 E. 56 Highway ..... 971-7500

**HUMAN RESOURCES**

100 E. Santa Fe ..... 971-8735

**Olathe City Council**

**Larry Campbell**  
Ward 1

913-488-7278  
lcampbell@olatheks.org

**Michael Copeland**  
Mayor

913-971-8500  
(City office)  
mcpeland@olatheks.org

**John Bacon**  
At Large

913-269-6305  
jbacon@olatheks.org

**Karin Brownlee**  
At Large

913-484-3255  
kbrownlee@olatheks.org

**Jim Randall**  
Ward 2

**and Mayor Pro Tem**  
913-424-3999  
jrandall@olatheks.org

**Wes McCoy**  
Ward 3

913-269-1035  
rwmccoy@olatheks.org

**Marge Vogt**  
Ward 4

913-269-0625  
mvogt@olatheks.org

CONNECT WITH US



Apps available on the App Store and Google Play

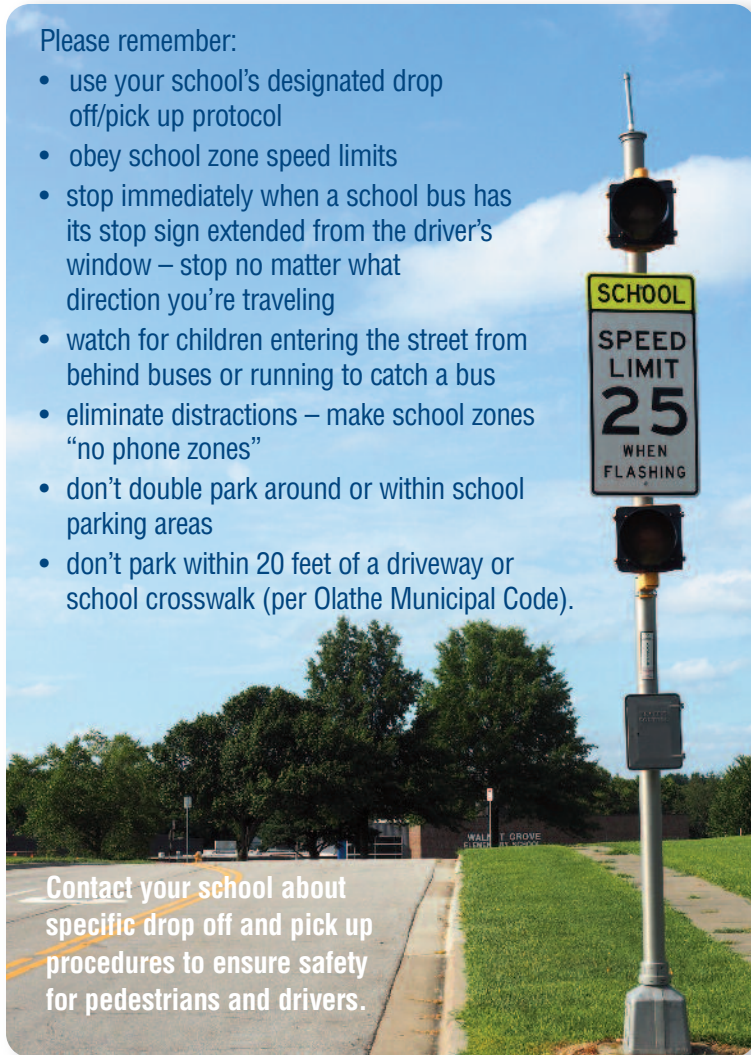
**OLATHE CONNECT TrashDay**

# Slow Down, Use Caution Around Schools

**Children walking or riding bicycles in areas around schools make it vitally important for all drivers to pay special attention.**

Please remember:

- use your school's designated drop off/pick up protocol
- obey school zone speed limits
- stop immediately when a school bus has its stop sign extended from the driver's window – stop no matter what direction you're traveling
- watch for children entering the street from behind buses or running to catch a bus
- eliminate distractions – make school zones "no phone zones"
- don't double park around or within school parking areas
- don't park within 20 feet of a driveway or school crosswalk (per Olathe Municipal Code).



Contact your school about specific drop off and pick up procedures to ensure safety for pedestrians and drivers.



## OlatheConnect Provides Avenue for City Hall Requests 24/7

If you have questions or concerns about City of Olathe services, go to the source for information — OlatheConnect. This virtual City Hall service is available at [OlatheKS.org/OlatheConnect](http://OlatheKS.org/OlatheConnect), or you can contact us "on the go" by downloading the **OlatheConnect mobile app**.

When you make a request, it will be routed to the person who can best serve you. More than 95 percent of all contacts with OlatheConnect receive responses in less than two business days.

We're here to serve you!

# Olathe Drivers Recognized

**Allstate rated Olathe the sixth safest driving city in the nation.**

The average Olathe driver will experience a collision once every 12.66 years, according to Allstate's 2019 Best Drivers Report. The average driver in America gets into a collision once every 10.57 years. Olathe moved up from the 11th safest city ranking in 2018.

## Safest Driving Cities

The cities with drivers that are least likely to experience collisions.

1. Brownsville, Texas
2. Boise, Idaho
3. Huntsville, Alabama
4. Kansas City, Kansas
5. Laredo, Texas
6. Olathe, Kansas
7. Fort Collins, Colorado
8. Overland Park, Kansas
9. McAllen, Texas
10. Cape Coral, Florida

# What's Being Built in Olathe

## Black Bob 151 Shops Medical Building

A new 6,000 square foot building was recently completed near the southeast corner of 151st Street and Black Bob Road. The new structure is the second medical building built within the Black Bob 151 Shops.



## Pacific Dental Services

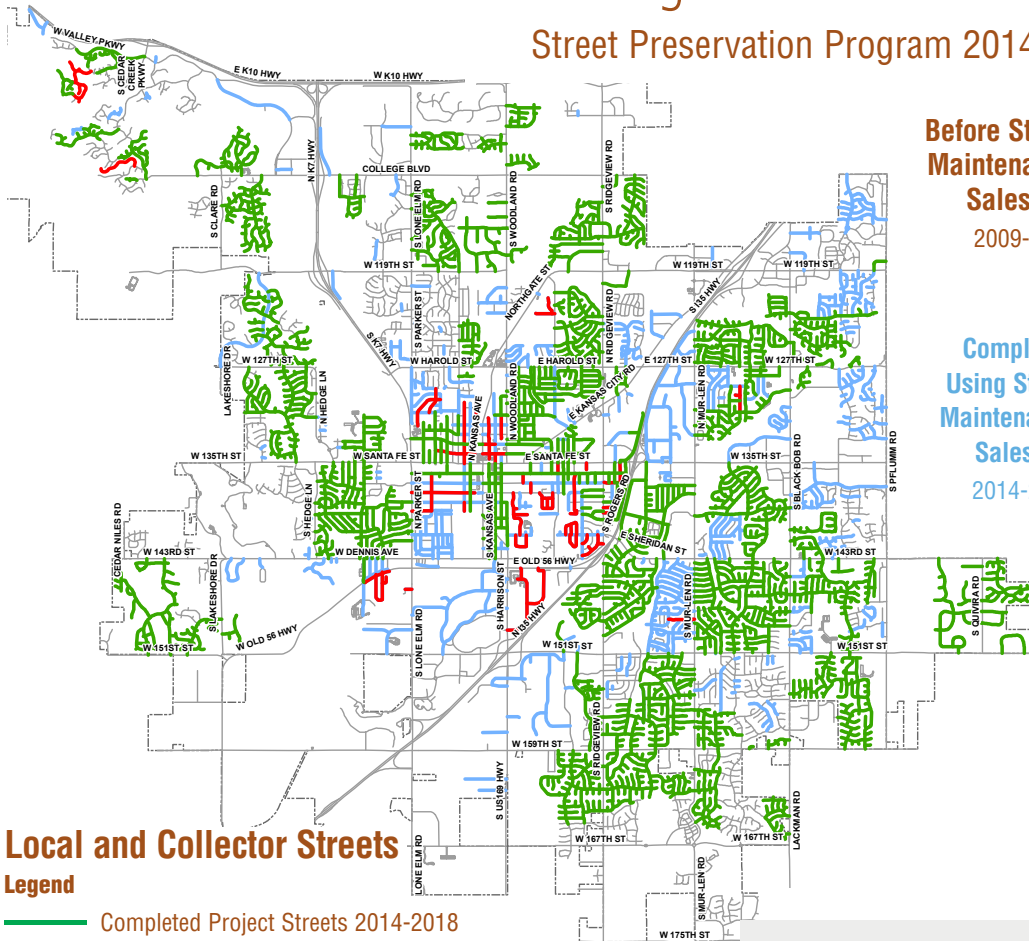
A new 4,800 square foot dentist building is under construction in The Shops at Prairie Farms, located at the southwest corner of Santa Fe Street and Hedge Lane.

Find more information on Olathe development at [OlatheKS.org/WhatsBeingBuilt](http://OlatheKS.org/WhatsBeingBuilt)



# Progress as Promised for Street Maintenance

## Street Preservation Program 2014-2023 – Mid Program Update

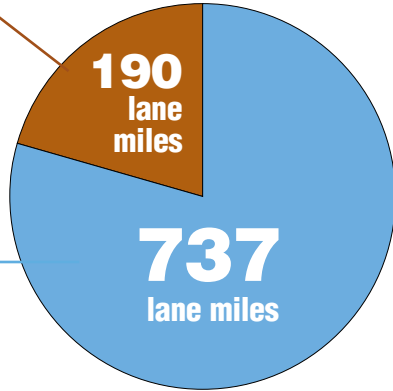


**Local and Collector Streets Legend**

- Completed Project Streets 2014-2018
- Future Reconstruction Streets
- Mill and Overlay Candidates 2019-2023

**Before Street Maintenance Sales Tax 2009-2013**

**Completed Using Street Maintenance Sales Tax 2014-2018**

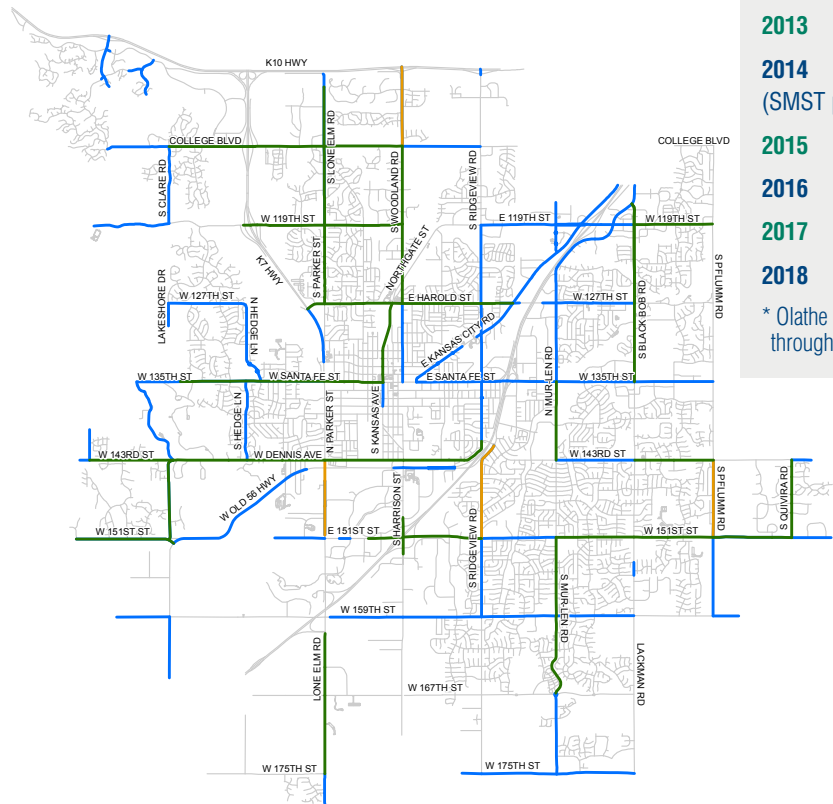


Olathe voters approved the Street Maintenance Sales Tax in November 2013 and the tax became effective in April 2014.

### Investments in Olathe's Street System

Year	G.O. Bond	Cash	Street Maintenance Sales Tax*	Other	Total
2013	\$2,976,661	\$1,600,000		\$1,365,600	\$5,942,261
2014	\$2,040,000	\$1,800,000	\$4,850,000	\$1,504,000	\$10,194,000 (SMST partial year)
2015	\$2,200,000	\$2,000,000	\$9,460,000	\$1,830,000	\$15,490,000
2016	\$250,000	\$2,200,000	\$12,350,000	-	\$14,800,000
2017	\$1,000,000	\$2,400,000	\$12,800,000	\$2,350,000	\$18,550,000
2018	\$1,055,000	\$2,600,000	\$13,127,000	\$3,605,000	\$20,387,000

\* Olathe Street Preservation is the only program using the Street Maintenance Sales Tax through the first five years of the tax.



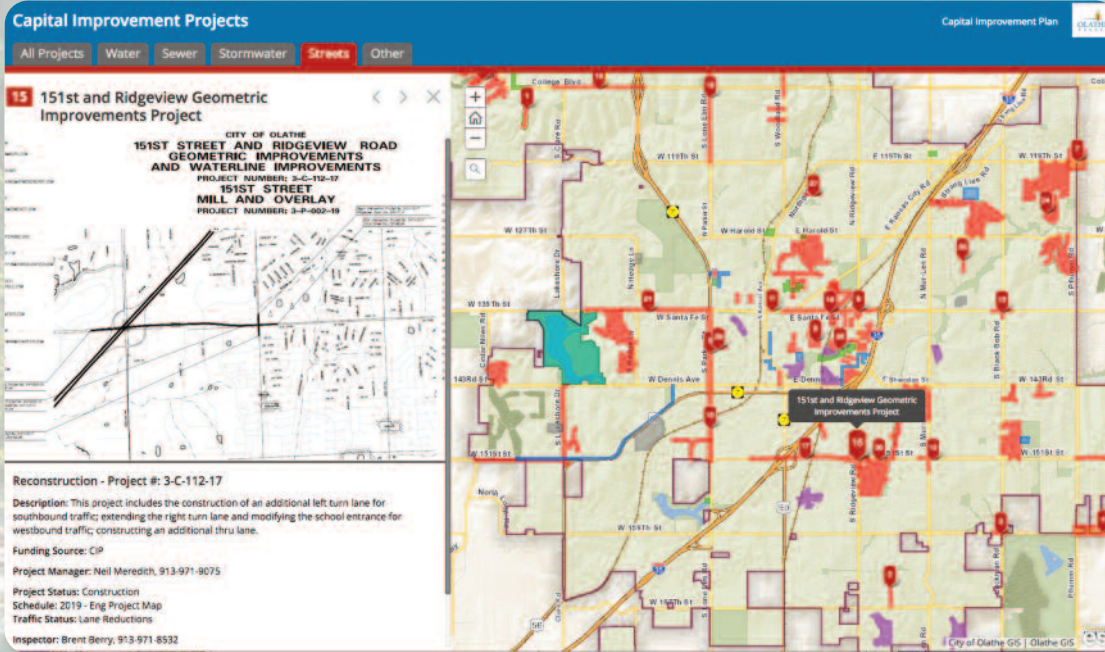
### Arterial Streets Legend

**Legend**

- Project Streets 2014-2018
- CIP Capacity Improvements 2020-2023
- Mill and Overlay Candidates 2020-2023

# Earth News

from the City of Olathe, Kansas



Check out Olathe's new Construction Project Map. The refreshed format makes it easy to see what and where improvements are occurring throughout the city. Choose the type of project you want to see, click a number on the map, and the left panel displays project details. Visit [OlatheKS.org](http://OlatheKS.org) and search Construction Map.

## Green Means GO! – Traffic Impact of Distracted Driving

We are all too familiar with the dangers of distracted driving involving vehicles in motion, but have you ever thought about the impact on traffic when we look at our phone to text or call while waiting for a traffic signal to turn green?

When drivers are distracted at a red light, it could delay their start into an intersection by as much as five to 10 seconds when the traffic signal turns green. Five to 10 seconds may not seem like a long time, but on average, it takes two seconds for one vehicle to clear an intersection. During rush hour, side streets may have as little as 10 seconds for cars to pass through an intersection, while the main roadway could have as much as two minutes.

To put this in perspective, when a driver is distracted and does not accelerate when the light turns green, it could cause up to four vehicles to wait more than two minutes for the next green light.

Please remember to put your phone away anytime you are in the car for the safety of you and everyone on the road.



# Help Keep Olathe Beautiful Adopt a Street or Stream!

Keeping trash and debris off the streets helps build civic pride within Olathe. Removing debris from our streams cleans our environment and protects water quality. In the Adopt a Street program alone, 35 plus companies, churches, schools, and others are regularly beautifying 42 miles of Olathe's main streets. More volunteers are needed to keep Olathe beautiful.



## Who Can Participate?

Anyone can sign up for the Adopt a Street or Stream programs, including schools, churches, businesses, Scouts, neighborhoods, and families. If you live, work, or play in Olathe, you're eligible to participate. Each participant will receive a free Adopt a Street or Stream t-shirt and the tools necessary to complete clean-up work as scheduled.

Visit [OlatheKS.org](http://OlatheKS.org) and search "Adopt a Street" or Adopt a Stream" for more information.



## Signing Up Is Easy

1. **Recruit** your friends, family & co-workers.
2. Fill out a **Group Volunteer Application** at [OlatheKS.org](http://OlatheKS.org). The City will contact you soon.
3. **Organize and plan** a date for your first clean-up. Call the City at least one week before your organized clean-up to schedule free delivery of any materials you will need, such as trash bags, gloves, safety vests, etc.



# Olathe LINK

P.O. Box 768, Olathe, Kansas 66051-0768

PRSR STD  
U.S. POSTAGE  
PAID  
Permit No. 323  
Olathe, KS

**Reader Feedback**  
Please send your comments to:  
Olathe Link  
P.O. Box 768  
Olathe, KS 66051-0768  
linkcomments@OlatheKS.org  
913-971-8700

## Issues Affecting You

- New Indian Creek Library Opens in October ..1**
- Mayor's Message..... 2**
- Teens' Perspectives for Olathe's Future .... 3**
- Slow Down Near Schools..... 4**
- Progress as Promised..... 5**
- Olathe Earth News ..... 6-7**

If you require this material in a black and white format, please contact the Olathe human relations manager, 913-971-8827.



### OlatheConnect

Look for information or submit a service request 24/7.

[OlatheKS.org/OlatheConnect](http://OlatheKS.org/OlatheConnect)



Receive Olathe news and updates by email or text message. Click on e-notification or the envelope icon at [OlatheKS.org](http://OlatheKS.org).

**OLATHE SPOOKTOBER OCT. 25-26**

<b>CELEBRATE OLATHE</b> <b>OCTOBER 25</b> 6:30 PM Olathe Community Center 1205 E. Kansas City Rd.	<b>MAHAFFIE TRICK OR TREAT OFF THE STREET</b> <b>OCTOBER 25</b> 3-6 PM Mahaffie Stagecoach Stop & Farm 1200 E. Kansas City Rd.	<b>HAUNTED SWAMP</b> <b>OCTOBER 26</b> 6:30-8PM Olathe Community Center 1205 E. Kansas City Rd.
---	--	---

OLATHEKS.ORG/SPOOKTOBER

ACTIVITIES FOR THE WHOLE FAMILY!

**Wild West Days**

MAHAFFIE STAGECOACH STOP & FARM

**Olathe Live!**  
**Oct. 11**  
 Tallgrass Express  
 with Kelly Hunt

**MAIN EVENT**  
**OCTOBER 12 & 13**  
 10am-4pm | 11am-4pm

1200 E. Kansas City Rd. ★ Olathe, KS 66061 ★ [mahaffie.org](http://mahaffie.org)