



Olathe Residents' Number One Source for City of Olathe Information—DirectionFinder®

Santa Marta Park

Keeping You Moving Is Our Priority



Soon you will see these signs on City of Olathe projects to highlight the major improvements and the expected timelines.

The City of Olathe is listening and making additional traffic flow improvements to address this top resident priority. The 2019 General Fund Budget invests 69 percent of funds to transportation and public safety. Work is focused on the most congested intersections for improved traffic flow, decreased delays, and reduced emissions. Traffic signal coordination complements construction projects for reduced traffic delays.

Santa Fe and Ridgeview Improvements in Progress

Recent resident surveys indicated improvements at Santa Fe Street and Ridgeview Road were the most desired.

Drivers should expect intermittent delays at this intersection as utilities relocations are in progress. When completed, the intersection's capacity will be improved with:

- two left turn and two through lanes for each quadrant of the intersection
- dedicated right turn lanes for northbound, southbound, and eastbound traffic
- a shared through/right turn lane for westbound traffic.

Parker/K7 Corridor Improvements Underway

Beginning this spring, additional turn lanes, medians and traffic signal replacements will be installed between Santa Fe and Old 56 Highway. These improvements will help alleviate existing traffic

delays resulting from left-turning vehicles. Expect intermittent delays during construction.

151st Street Corridor Improvements

Drivers in this area should expect lane closures beginning this summer on 151st Street, Ridgeview Road to Olathe Medical Center, for mill and pavement overlay and curb, gutter, sidewalk, and ADA ramp replacements. A 24/7 lane closure will occur in the westbound lane for a bridge approach replacement. In addition, work has started at the 151st and Ridgeview intersection to provide new turn lanes for improved capacity. Upon the intersection's completion, it is projected the combined time saved will total 20 hours daily for all drivers.

Mahaffie Circle Extension under I-35

The City is managing a public-private partnership to provide an alternative route from the 151st Street area near Garmin. Mahaffie Circle will be extended north to the intersection of Old 56 Highway and Church Street. As a partner in these improvements, the Kansas Department of Transportation (KDOT) will expand the I-35 bridge over the railroad to accommodate the new street, which includes pavement, curb and gutter, storm sewer, streets lights, and sidewalks. This spring through late fall, I-35 will be reduced from three to two lanes in each direction from 143rd to 151st Street. This project was selected to receive \$7,000,000 in funding from the KDOT Economic Development Program. In addition, Garmin is providing \$1,800,000 for the project.

I-35 and K-10 Highway Paving

Although not City of Olathe projects, allow extra travel time for lane closures occurring with pavement surfacing work on I-35 from 95th to Santa Fe Street, and on K-10 Highway to the Douglas County line. These projects are managed by KDOT.



Find additional Olathe news at OlatheKS.org. Click on NEWS.

Inside This Issue

Mayor's Message	2	Police and Ring Offer New Safety Partnership	5
Indian Creek Library Moving Forward	3	Olathe Earth News	6-7
What's Being Built	4	Count Me In	8



Mayor's Message

We Live in One of America's Safest Cities

We are fortunate that our community supports and invests in public safety initiatives that make Olathe one of the safest cities of our size. This is affirmed with an overall 95 percent citizen satisfaction rating for fire, police, and emergency medical services in 2018 surveys. Residents also rate Olathe first in satisfaction for emergency response times to fire protection, emergency medical, and police services among Kansas City area cities.

There are multiple reasons why we have a safe city. Our community is among the few recognized with both a Class I ISO rating (Insurance Services Office) and a Fire Department accredited from the Commission on Fire Accreditation International. We are further supporting safety as Fire Station No. 8 on West Dennis Avenue becomes 24/7 operational when 12 new firefighters come on board this summer. A permanent Fire Station No. 8 facility is currently in design for the northwest corner of 148th Street and Lakeshore Drive. In addition, a fourth fire squad became operational in 2018 at Fire Station No. 3, near 143rd Street and Black Bob Road.

Our Fire Department's emergency life-saving impact is shown as Olathe is in the top tier of communities with a 69.23 percent cardiac arrest survival rate upon arrival to the hospital. To broaden life-saving effectiveness, the Fire Department trained 2,000 people in CPR last year and launched a Verified Responder program. This program uses the PulsePoint mobile app to notify off-duty firefighters of nearby persons experiencing cardiac arrest, allowing them to respond to a home or other private location.

One hundred percent of Olathe residential areas are covered by outdoor storm warning sirens. Three new sirens were recently installed, providing our community with 43 total warning sirens.

Investments in our Police Department are equally critical in safeguarding our city to the fullest. Olathe is outperforming peer law enforcement agencies with lower than average crime rates and total crimes against persons and property. Our crime analysts and police management are providing timely and effective intelligence, tactics, resource deployment, and

follow-up to address crime. This performance has occurred with community support and continued resource allocation. The 2019/2020 budget is adding two police detectives and a detective sergeant to help prevent and solve crimes in the coming years. In partnership with Olathe Public Schools, five additional school resource officers (SROs) and one SRO sergeant will achieve having officers in all middle and high schools.

Earlier this year, our Police Department joined in the new county-wide law enforcement records management system. Eighteen agencies and the Johnson County District Attorney's Office are now using the same system, significantly improving efficiency and intelligence sharing among these agencies. The public safety benefits to our community and the county are far-reaching.

Our growing city is investing in other public safety facilities with a recently updated Emergency Operations Center. In a few years, we expect to open a Fire Training Center and expand the Police Headquarters building. We continue to support efforts to "home grow" Olathe fire and police careers at the Public Safety Academy at Olathe West High School.



Fire Division Chief Joey Heideman at work in Olathe's recently updated Emergency Operations Center.

While allocating resources to equipment and facilities is important, the most vital part of keeping our city safe is the men and women who serve in public safety roles. The next time you see one them, be sure to thank them for the service they provide our city.

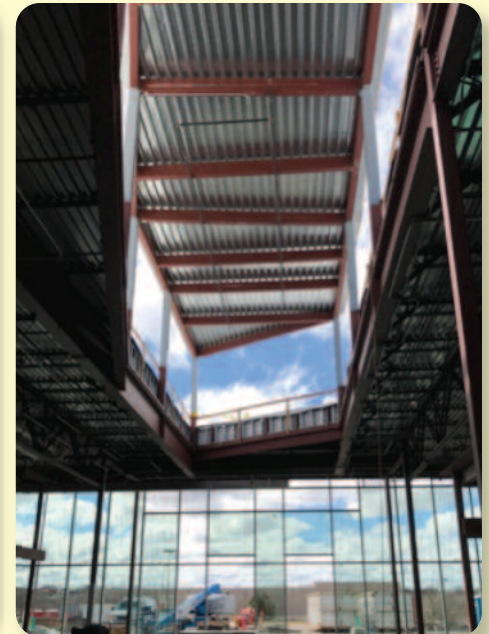
Sincerely,

Michael Copeland
Mayor

Significant Progress Made at Indian Creek Library



The Children's Reading Garden is coming together on the building's northeast side. A security fence will be installed at the area's retaining wall to protect young library patrons.



An interior view of the Indian Creek Library's raised roof with windows and skylights showcase the natural light entering the building.

Construction at the Indian Creek Library is moving along with a new roof, the glass facing in place, and exterior wall work nearly complete. On the north side, an outside area is turning into a park, and the courtyard space is clearly defined.

Simultaneously, work is in motion on the building's interior and library operations preparation. Earlier this year, Olathe's

Park Street Pastry was selected to serve customers at the Indian Creek Café.

The new Indian Creek Library at 16100 W. 135th St. is expected to open in fall 2019.

See the latest construction updates, including a video flyover, at OlatheLibrary.org.

Important City Phone Numbers

Regular Business Hours:

Monday - Friday, 8 a.m. - 5 p.m.

Except for **Emergency 911**, and unless otherwise noted

EMERGENCY **911**

Emergency TDD/TTY Calls **911**

GENERAL INFORMATION (TDD/Voice) 971-8600

CUSTOMER SERVICE

1385 S. Robinson 971-9311

Billing, Trash, Water & Sewer

FIRE ADMINISTRATION

1225 S. Hamilton Circle (Non-Emergency) 971-7900

Printed on recyclable paper.



OlatheKS.org/ServicesDirectory

OLATHE PUBLIC LIBRARY

201 E. Park St. 971-6850

13511 S. Mur-Len Rd. 971-6835

PARKS AND RECREATION DEPARTMENT

OLATHE COMMUNITY CENTER

1205 E. Kansas City Rd. (TDD/Voice) ... 971-8563

POLICE DEPARTMENT

501 E. 56 Highway 971-7500

HUMAN RESOURCES

100 E. Santa Fe 971-8735

Olathe City Council

Larry Campbell
Ward 1

913-488-7278
lcampbell@olatheks.org

Michael Copeland
Mayor

913-971-8500
(City office)
mcopeland@olatheks.org

Jim Randall
Ward 2

and Mayor Pro Tem
913-424-3999
jrandall@olatheks.org

John Bacon
At Large

913-269-6305
jbacon@olatheks.org

Wes McCoy
Ward 3

913-269-1035
rwmccoy@olatheks.org

Karin Brownlee
At Large

913-484-3255
kbrownlee@olatheks.org

Marge Vogt
Ward 4

913-269-0625
mvogt@olatheks.org

CONNECT WITH US



Apps available on the App Store and Google Play

OLATHE CONNECT **OLATHE TRASH DAY**

What's Being Built in Olathe

Bank of Blue Valley – West Santa Fe Street

A new bank with a drive-through is under construction in west Olathe, at Santa Fe and Monroe Street. The building will be the new Olathe branch location, as the existing bank at Santa Fe and Ridgeview will be removed for intersection improvements. The new branch is expected to open in late summer/early fall 2019.



Sutherland's Home Improvement Store – 151st Street and Mur-Len Road

The former Price Chopper grocery store is being renovated for a new home improvement store with an outdoor garden center. The development will include façade renovations, new parking lot landscaping, and sidewalk connections to Mur-Len Road.



Tint World – Santa Fe and Ridgeview Road

A new automotive accessory retail store will occupy the vacant building that was formerly a QuikTrip convenience store. This will be the only Tint World facility in the Kansas City Metro area, as they will be moving from their current Lenexa location. Tint World will upgrade the exterior of the existing building. Construction will begin this spring with an expected summer 2019 opening.



More information on Olathe development is at: OlatheKS.org/WhatsBeingBuilt

City of Olathe Named 2019 Healthiest Employer

The City of Olathe is proud to be named a 2019 Healthiest Employer by the *Kansas City Business Journal*. Each year, the *Kansas City Business Journal* works with Healthiest Employers LLC, a data and research company, to measure employer commitment to making health and wellness a priority for their companies based on wellness programming and benefits.



Olathe employees accepted the 2019 Healthiest Employer Award on behalf of the City, from left: Zach Baker, Jana Goolsby, Travis Tomison, and Kim Marshall.



2019 DATES

6/14
Frontier Park

6/28
Frontier Park

7/12
CELEBRATE OLATHE
Lake Olathe

7/26
Stagecoach Park

10/11
Stagecoach Park

All shows start at 7 PM.
For artist announcements,
visit OlatheKS.org/OlatheLive
or follow Olathe Live on Facebook

Spruce Up for Spring

Household Hazardous Waste Drop-off

Dispose of old or unwanted household chemicals at the monthly, second Saturday HHW collection event, 8 a.m. to 2 p.m.

Or, schedule a drop-off appointment 24-hours in advance:

Wednesday, Thursday, and Friday: 10 a.m. to 6 p.m.

First, third, and fourth Saturdays of each month: 8 a.m. to 2 p.m.

Call 913-971-9311 or book online: OlatheKS.org/HHW.

HHW facility: 1420 S. Robinson Dr.

Products for ReUse

Check the ReUse shelves for free products before heading to the hardware store. Items often available include latex and spray paints, carpet cleaners, and gardening supplies.

Shop the ReUse shelves 10 a.m. to 3 p.m., Monday-Friday, 1420 S. Robinson Dr.



Tool Lending Library

Check out a rake, shovel, wheelbarrow or push mower from the Tool Lending Library. Visit the Downtown Olathe Library to become a member. Members must be at least 18 years of age and complete an application.

Visit OlatheLibrary.org. Search [Tool Lending](#).

Bulk Item Pickup

Schedule a curbside pickup for large or bulky items on your regular trash collection day. Call 913-971-9311 by 5 p.m. the day before your collection day. Fees apply.

Call and Haul Dumpster

Taking on a remodeling project? Four and six-yard containers are available to residents for weekday (Monday-Friday) or weekend rentals. Call 913-971-9311.

Free Compost and Mulch

Bring a photo ID and shovel to self-load free compost or wood chip mulch at the Olathe Composting Facility, 1100 Hedge Lane. Call first to check availability: 913-971-5178.

Open 8 a.m. to 4 p.m., Monday-Saturday



Olathe Police Department

has joined Neighbors by Ring

Neighbors by Ring is a new neighborhood watch tool that sends real-time crime and safety notifications directly to your phone.

To join the Olathe Police Department on the **FREE** Neighbors App,

Text olatheks to 555888

or go to **Download.Ring.com/Olathe**

Join the neighborhood and use the free app to:

- Monitor neighborhood activity
- Share crime and safety-related videos, photos and text-based posts directly with the Olathe Police Department
- Receive real-time safety alerts from neighbors, local law enforcement, and the Ring team.

For every 20 new residents who join the Ring Neighbors App, Ring provides the Olathe Police Department one Ring doorbell device. Olathe Police will distribute these devices to domestic violence or stalker victims.

You don't need a Ring device to participate in this program.

Earth News

from the City of Olathe, Kansas

Boost Your Property's Stormwater Absorption

Olathe property owners are encouraged to manage stormwater and improve water quality by participating in the Stormwater Cost Share Program. A 50 percent match for expenses is available for:

- Rain gardens, bioswales, stream buffers, or native plantings, up to \$1,000
- Rain barrels, up to \$75 each. Limit: two rain barrels per household



Installing a rain garden, rain barrel, and/or adding native plants to properties can help slow stormwater runoff, reduce erosion, and potential downstream flooding. More information and a Cost Share Program application are available at OlatheKS.org. **Search Stormwater.**



Public Works Improves Pavement Marking Formula

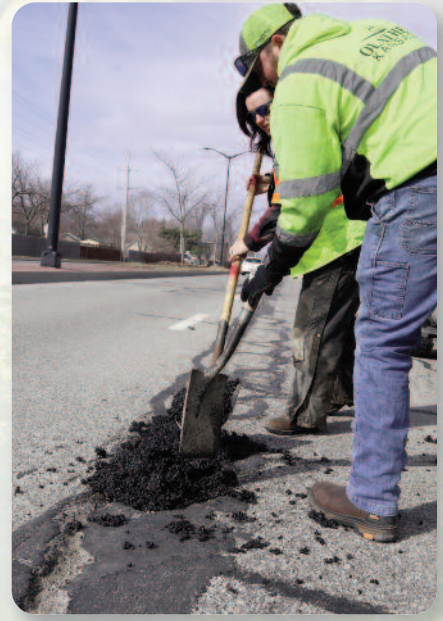
Pavement markings help drivers and pedestrians reach their destinations safely by defining traffic lanes, turn lanes, and crosswalks. Reflective pavement materials are especially important for drivers' night visibility. During the past three years, Olathe Public Works tested and refined pavement marking paint that is producing greater strength, durability, and reflectivity at a 40 percent cost savings. The result is a high performance paint that is proving effective in these essential areas. The word is out. Other governmental agencies have asked Public Works about the innovative pavement marking material to make their own improvements.





What's Behind Potholes?

Potholes in the Midwest are inevitable. They form when moisture from rain or snow enters cracks in the road surface and freezes. When the water freezes, it expands and takes up more physical space under the road surface. The affected road area weakens, causing the pavement to bend and crack. Next, the pavement temperatures warm above freezing and the ice melts, causing pavement to contract. This freeze-thaw cycle, combined with traffic, buckles and sinks the pavement to create potholes.



Repairing Potholes

City crews repaired more than 4,000 potholes the first quarter of this year, an unusually high number resulting from the past year's winter weather. During winter, a temporary cold mix asphalt is used, since a hot asphalt mix is not readily available. Once a pothole is identified, the crews:

- Clear loose debris and moisture from the pothole
- Fill the pothole with the cold asphalt mix
- Compact the cold mix down to make it as smooth as possible.

Now that warmer temperatures are here, crews use a mobile pothole repair unit that holds hot asphalt mix.

Report Potholes

Report potholes by calling 913-971-9311, or submit pothole locations and photos through OlatheConnect. For those who prefer a mobile option, the OlatheConnect app is available for iPhone and Android devices.

Preparation Counts for Yard Waste Collection



It's important to set out yard waste for curbside collection **ONLY** in compostable paper bags or in yard waste carts purchased from the City of Olathe. Yard waste should **NOT** be placed in plastic bags or generic trash bins or carts.

Loose branches should be securely tied in bundles, be no longer than four feet and four inches in diameter, and must weigh less than 50 pounds for curbside collection.

Storm Debris Clean-Up by the Numbers

Storm Event: **January 11-12, 2019**

Clean-up duration:
January 28-February 23

13,305

Cubic yards collected

Equal to a football field stacked almost 10 ft. high with debris

188.50

Public Works crews overtime hours

Remember:

Household trash must be in City of Olathe gray carts for collection, not in generic carts or bins. An additional trash cart is available for \$5 per month.

Olathe **LINK**

P.O. Box 768, Olathe, Kansas 66051-0768

Reader Feedback

Please send your comments to:

Olathe Link

P.O. Box 768

Olathe, KS 66051-0768

linkcomments@OlatheKS.org

913-971-8700

PRSR STD
U.S. POSTAGE
PAID
Permit No. 323
Olathe, KS

Issues Affecting You

Keeping You Moving	1
Mayor's Message	2
Indian Creek Library Update	3
What's Being Built	4
Spruce Up for Spring	5
Olathe Earth News	6-7

If you require this material in a black and white format, please contact the Olathe human relations manager, 913-971-8827.



OlatheConnect

Look for information or submit a service request 24/7.

OlatheKS.org/OlatheConnect



Receive Olathe news and updates by email or text message. Click on e-notification or the envelope icon at OlatheKS.org.

061
VENUES *at* 061

Eagles Landing
AT LAKE OLATHE

For more information and to book the new venue at Lake Olathe, visit OlatheKS.org/Venuesat061 or call 913-971-5501.

2019 PICK
the knot
best of
weddings

#CountMeInJoCo

Count Me In JoCo
Everyone counts for the 2020 Census

Learn more at
CountMeInJoCo.org