



Olathe Residents' Number One Source for City of Olathe Information—DirectionFinder® *Third graders learn about Olathe Public Works Department services.*

## Olathe Continues to Set the Standard for City Services

The City of Olathe continues as a national leader among cities and exceeds the Kansas City area in providing residential services according to the 2018 DirectionFinder® citizen survey. The City of Olathe has the highest rating, 93 percent, for the overall quality of city services in the nation. Citizen satisfaction ratings for overall quality of city services was 43 percent above the national average — nearly double an average U.S. city's rating! The City of Olathe also rated first in quality of customer service received from city employees (for cities over 100,000).

“Olathe is one of the best cities out there,” says Chris Tatham, ETC Institute chief executive officer. ETC conducts surveys with nearly 900 cities throughout the nation. Approximately 60 areas of Olathe services are compared each year to other communities.

Tatham attributes citizens' high satisfaction to Olathe's implementation of a vision, budgeting based on input from residents, and the City's constant response to residents' needs to move the city forward.

“The City of Olathe is getting these results because we're listening to our taxpayers,” says Olathe Mayor Michael Copeland. “We rely on these surveys to invest dollars in the way residents want resources allocated,” he says.

Olathe has asked citizens to participate in the surveys since 2000 as an objective platform to assess City services, gain input from

residents to help set priorities, evaluate trends, and compare Olathe's performance with other cities throughout the nation. During 2018, 2,000 Olathe residents provided the City input.

### Olathe Services with Top Ratings in Kansas City Area

- Overall Quality of City Services
- Overall Solid Waste System & Trash, Yard Waste, Recycling
- Overall Water & Taste of Tap Water, and Sewer Utilities
- City Communication with the Public
- City Swimming Pools
- Indoor Recreation Facilities
- Outdoor Athletic Fields
- Youth Athletic Programs
- Adult Athletic Programs
- How Quickly Fire/EMS Respond to Emergencies
- How Quickly Police Respond to Emergencies
- Quality of Animal Control

When asked what services are most important, residents' priorities continue to be traffic flow/traffic management, and maintenance of City streets, buildings, and facilities.

Find a full DirectionFinder® report at [OlatheKS.org](http://OlatheKS.org) by searching “Performance Management.”

## Keeping You Moving

Residents have spoken and the City of Olathe is listening. Traffic flow improvements and street maintenance are consistent resident priorities. The five-year Olathe Capital Improvement Plan contains 18 major street improvement projects to address safety and help reduce travel time through the city.

You will likely encounter both City and KDOT improvement projects this year. Thank you for your patience throughout construction.

**2019 Major Traffic Improvements—Page 5**



Find additional Olathe news at [OlatheKS.org](http://OlatheKS.org). Click on NEWS.

### Inside This Issue

Mayor's Message .....	2	Register Your Neighborhood .....	4
Coming Soon to Lake Olathe .....	3	Olathe Earth News .....	6-7
What's Being Built .....	4	Spring Events .....	8



## Mayor's Message

## More People Choosing Olathe

Olathe's population reached 141,159 at the end of January 2019. We've welcomed more than 40,000 new residents in the past two decades, and are consistently one of the fastest growing cities in the Midwest. During this time, more people have chosen to live and raise families here than just about anywhere else in this region. As one of the largest cities in the state, Olathe's grown from a small bedroom community to a nationally recognized destination for families.

Why? Although we're a substantial-size city, Olathe still has the feel of a smaller and united community. Neighbors care about each other. We all come together to celebrate. We line the streets to welcome the return of a fallen hero. On top of that, we are consistently ranked one of America's safest cities. We have great parks, trails, excellent schools, and health care.

We've transitioned from a small, rural community to a destination for business investment and hometown jobs at great Olathe companies like Garmin and Terracon Engineering. We continue to see investment in our community with additions like Orizon Aerostructures, joining our expanding aeronautics and aviation industry.

As you note from the story on page one, once people are living here, they are happy. More than nine in 10 residents are satisfied or very satisfied with our quality of life. They feel



*Among our many community amenities, Olathe is home to a downtown outdoor sculpture exhibit.*

safe and connected. According to residents responding to the 2018 citizen survey, 95 percent said Olathe is an excellent or good place to live, and 94 percent said Olathe is an excellent or good place to raise children.

While Olathe's appeal is great, that doesn't mean we can stop seeking ways to improve our community. The Olathe City Council and City staff are committed to making our city better through improvements, ongoing planning, finding responsible use of resources, and through community collaboration. Most importantly, we will continue to listen directly to residents for guidance as we move forward.

Sincerely,

Michael Copeland  
Mayor

Why do YOU think more people are choosing to raise their families here? Let us know! Share your thoughts on the City's Facebook page @CityofOlatheKS or Twitter @CityofOlatheKS.

## Did You Know ...?

Community volunteers contributed 31,596 hours of service to the City of Olathe during 2018. If those individuals were paid for their contributions, that's a \$780,105 value.

Volunteering provides the opportunity to enhance the quality of life of others and offers an enriching experience to those who care enough to make a difference.

Interested in volunteering? Click on **I Want to ... VOLUNTEER** at [OlatheKS.org](http://OlatheKS.org) to learn about opportunities and apply.

## Congratulations to the American Legion



on their **100th birthday**  
and to **Olathe Earl Collier Post 153**  
for their **service to local veterans.**

# Coming Soon New Lake Olathe Park



## What to Look For

- Eagles Landing, a new 6,500-square foot rental venue perched on the lake's east side with a large deck overlooking the water
- New swimming beach with an aquatic obstacle course
- Marina to provide rental of canoes, kayaks, peddle boards, and paddle boards
- Accessible dock and fishing pavilion
- Beaver Shelter renovation, including restrooms surrounded by a nature destination playground, designed in collaboration with children and families
- Four miles of accessible, hard surface trails
- Renovated upper pond with formal and natural brooks and a cascading waterfall
- Aquatic sprayground
- Renovated disc golf course

Lake Olathe is transforming into an even more iconic Olathe park destination as Phase I of the park improvements are nearing completion. Beginning this summer, the renovated Lake Olathe Park is set to offer greater access and more opportunities to enjoy this beautiful area on Olathe's west side.

This significant park improvement is possible with the majority of funding from the Olathe Park Sales Tax. Public input to identify preferences for the park's elements were developed through the Lake Olathe Park Master Plan, completed in 2016. Beginning in 2018, new and improved roads, parking, and water and sewer infrastructure construction occurred.

A grand opening celebration is planned for this summer. Learn about the event details as they become available and see construction progress in an aerial video at: [OlatheKS.org/LakeOlathe](http://OlatheKS.org/LakeOlathe).

## Important City Phone Numbers

Regular Business Hours:

Monday - Friday, 8 a.m. - 5 p.m.

Except for **Emergency 911**, and unless otherwise noted

**EMERGENCY** ..... 911

**Emergency TDD/TTY Calls** ..... 911

**GENERAL INFORMATION (TDD/Voice)** .... 971-8600

### CUSTOMER SERVICE

1385 S. Robinson ..... 971-9311

Billing, Trash, Water & Sewer

### FIRE ADMINISTRATION

1225 S. Hamilton Circle (Non-Emergency) .... 971-7900

Printed on recyclable paper.



[OlatheKS.org/ServicesDirectory](http://OlatheKS.org/ServicesDirectory)

### OLATHE PUBLIC LIBRARY

201 E. Park St. .... 971-6850

13511 S. Mur-Len Rd. .... 971-6835

### PARKS AND RECREATION DEPARTMENT

#### OLATHE COMMUNITY CENTER

1205 E. Kansas City Rd. (TDD/Voice) ... 971-8563

### POLICE DEPARTMENT

501 E. 56 Highway ..... 971-7500

### HUMAN RESOURCES

100 E. Santa Fe ..... 971-8735

## Olathe City Council

**Larry Campbell**  
Ward 1

913-488-7278

[lcampbell@olatheks.org](mailto:lcampbell@olatheks.org)

**Michael Copeland**  
Mayor

913-971-8500

(City office)

[mcopeland@olatheks.org](mailto:mcopeland@olatheks.org)

**Jim Randall**  
Ward 2

and Mayor Pro Tem

913-424-3999

[jrandall@olatheks.org](mailto:jrandall@olatheks.org)

**John Bacon**  
At Large

913-269-6305

[jbacon@olatheks.org](mailto:jbacon@olatheks.org)

**Wes McCoy**  
Ward 3

913-269-1035

[rwmccoy@olatheks.org](mailto:rwmccoy@olatheks.org)

**Karin Brownlee**  
At Large

913-484-3255

[kbrownlee@olatheks.org](mailto:kbrownlee@olatheks.org)

**Marge Vogt**  
Ward 4

913-269-0625

[mvogt@olatheks.org](mailto:mvogt@olatheks.org)

CONNECT WITH US



Apps available on the App Store and Google Play

**OLATHE CONNECT TrashDay**

# What's Being Built in Olathe

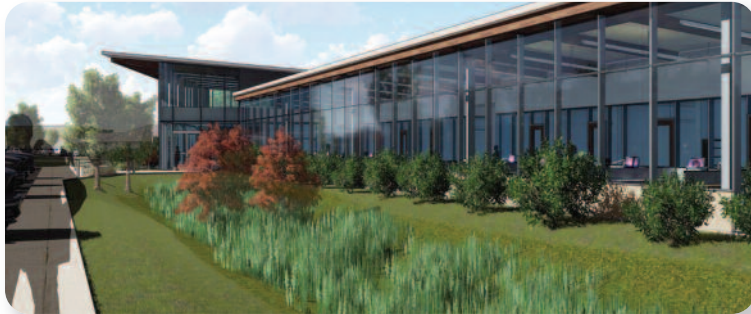
## Holiday Inn Express, Ridgeview Marketplace

A new hotel is under construction at K-10 Highway and Ridgeview Road, next to the Olathe Soccer Complex. The four-story hotel includes 93 rooms and will help serve the soccer complex and nearby convention center. The developer expects to open the hotel in July 2019.



## Johnson County Medical Examiner Facility

Johnson County has recently started construction for a new 32,000 square foot Medical Examiner facility near 119th Street and Sunset Drive within the Johnson County Sunset campus. The building is anticipated to open the second quarter of 2020.



## Ridgeview Falls Medical Building

An 8,600 square foot, multi-tenant office building is currently under construction at the northeast corner of 119th Street and Ridgeview Road. The building will be occupied by a new Olathe Health facility and Ridgeview Eye Care, which is moving from its current location in the adjacent commercial building. The building is expected to open by July 2019.



# Why You Should Register Your Neighborhood

The City of Olathe is encouraging organized neighborhood groups, homeowner associations (HOAs), or anyone wishing to organize their neighborhood to register online with the City at [OlatheKS.org](http://OlatheKS.org).



## Olathe Healthy Neighborhoods

PRESERVE | PROTECT | ENHANCE

Registration formally recognizes organized neighborhood groups and HOAs to create a network of neighborhood relationships and leaders for stability, ownership, and most importantly a partnership with the City for improved communication.

### Registration Program Benefits

#### Inclusion in a Neighborhood Contact and Mapping Database

The City will regularly update this resource for public outreach and project notifications.

**Organizational Support** Services may include, but are not limited to, connecting neighborhood leaders to City departments and services and with other neighborhood leaders.

**Leadership Training** Neighborhoods will receive information and training opportunities.

**Empowerment** Registration can engage neighborhood leaders and provide them with a greater sense of ownership as a community stakeholder.

**Incentives!** Funding opportunities are available to registered neighborhoods and HOAs for community engagement and improvements.

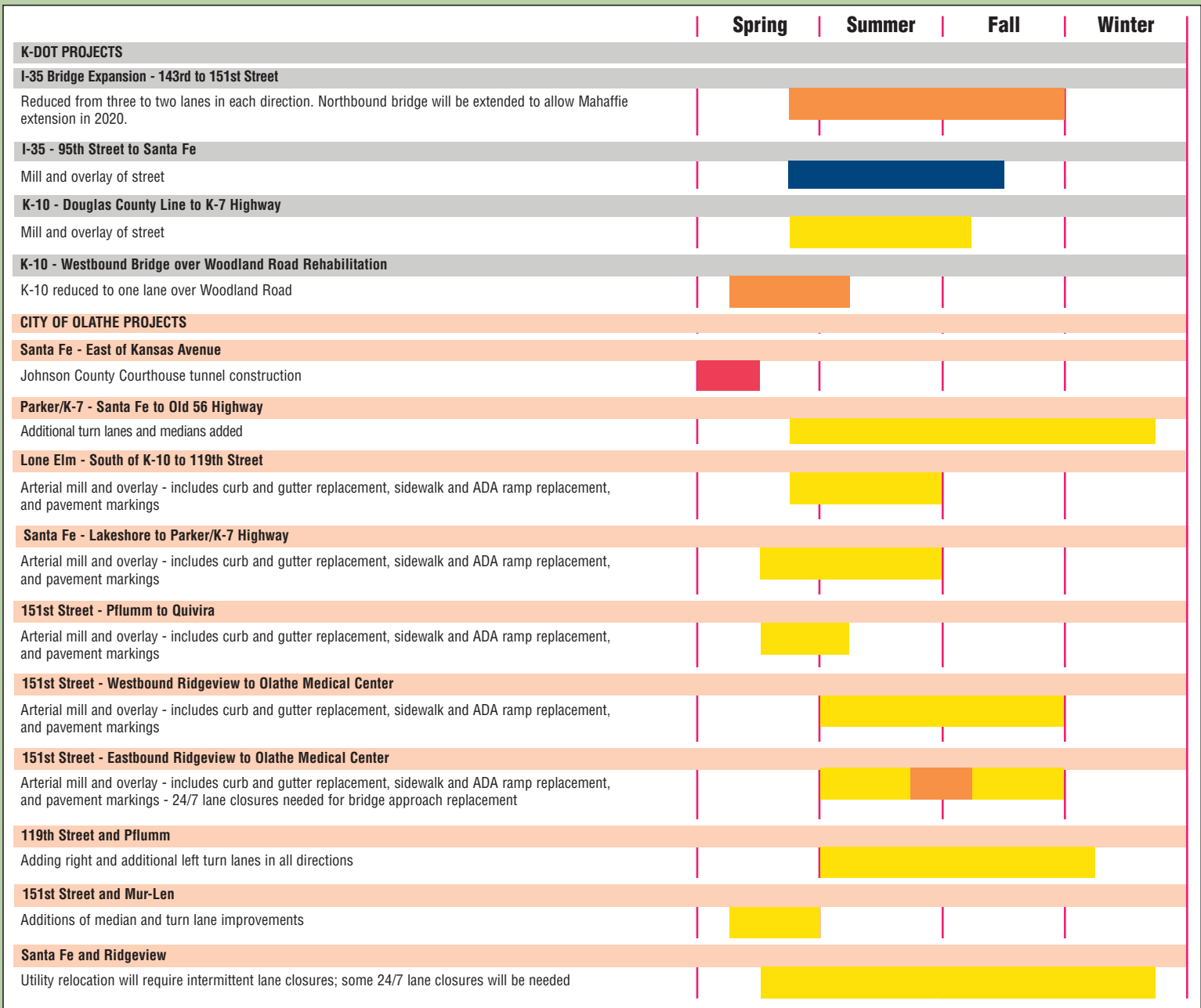
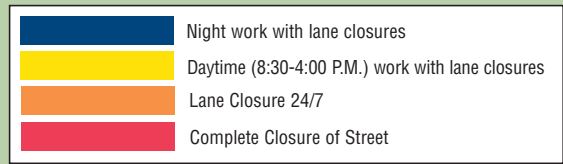
### A Neighborhood Grant Program is available to organized neighborhoods and HOAs registered with the City.

Two separate grants will be awarded based on different needs: Community Engagement, up to \$2,000 potential award funds available per application; Beautification and Improvement, up to \$4,000 available.

Successful applicants will include neighborhood projects that foster partnerships, neighborhood pride, or enhance and beautify the neighborhood. Example projects may include gatherings or block parties, community gardens, rain gardens, street sign toppers or entry signs and features. Get creative, have fun and get to know your neighbors!

For more information, including online applications and deadlines, please visit [OlatheKS.org](http://OlatheKS.org) or contact the Planning Division at 913-971-8750.

# 2019 Major Traffic Improvements and Impacts



## More Bike Lanes

Olathe residents have more ways to move throughout the city with an expanding transportation network providing active life style options for pedestrians and bicyclists.

## Bike Lane Safety

Motorists should share the road with bicycles. Always check the rearview mirror to see if there is a bicyclist in the bike lane before changing lanes or opening doors.

## Kansas Avenue

New, dedicated bike lanes are on Kansas Avenue from just south of Cedar Street to Dennis Avenue. Bike lane placement allows on-street parking.

## Coming Soon!

### Santa Fe

Look for dedicated bike lanes from Montclair west to Lakeshore Drive.

### Lone Elm Road

Dedicated bike lanes will run from 119th Street to K-10 Highway, and an eight-foot shared use path will also be constructed.

# Earth News

from the City of Olathe, Kansas

## Water Plant Improvements Ensure Continued Quality Drinking Water



Olathe Water Treatment Plant 2, 27065 W. 83rd St.

### Upgrades are underway at Olathe Water Treatment Plant 2

Originally built in 1964 and last expanded in 2006, Water Treatment Plant 2 provides drinking water to approximately 135,000 residents in Olathe and surrounding areas.

Plant updates will rehabilitate critical treatment infrastructure and ensure reliable operation into the

future for delivering safe and delicious drinking water to all customers. Design and construction of approximately \$17 million in upgrades will occur at the water plant during the next two years. For more information, visit [OlatheKS.org/WaterTreatment](http://OlatheKS.org/WaterTreatment).

### Project Components

#### Basin Modifications

Improve overall treatment process

#### Water Storage Tank Replacement

Meet water storage demands during peak season

#### Lime Feed Building Improvements

Ensure reliable operation of treatment process

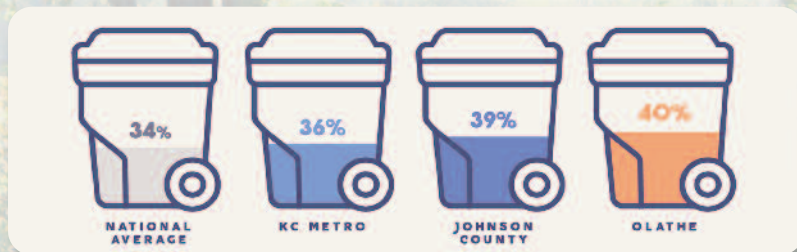
#### Chlorine Dioxide Disinfection Facilities

Implement new technology in water treatment process

## Olathe Exceeds National Recycling Diversion Rate

*“We focused on quality over quantity in 2018. All of the material recycled by residents is in fact being recycled because of the efforts being put forth.”*

—Solid Waste Manager Kent Seyfried



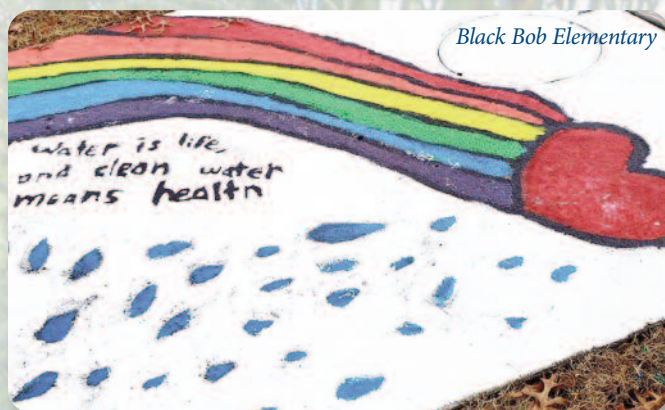
Residents continue to divert materials from the landfill for positive environmental impact through recycling efforts. During 2018, Olathe residents far exceeded the national waste diversion average by recycling.

So far, the conversion of streetlights with LED fixtures has reduced electrical expense by \$232,200 per year. Out of 7,000 plus streetlights, 3,500 are now equipped with LED fixtures.

## Olathe Youth Help Protect Water Quality

### Stormdrain Art

Students at Black Bob and Green Springs Elementary Schools designed and painted murals on stormdrains to serve as reminders to keep pollution out of local waterways. School art teachers for any grade level are invited to contact Olathe Water Quality Program Coordinator Michele Silsbee about participating in a project: [mlsilsbee@olatheks.org](mailto:mlsilsbee@olatheks.org).



### Eagle Scout Rain Garden Project



Laying out plants for Eagle Scout Rain Garden planting

**Togi Tiafau** installed a rain garden in a poor drainage area of Frisco Lake Park for his Eagle Scout project. The City of Olathe provided the plants, mulch, and compost; Togi coordinated the garden's installation.

Rain gardens slowly infiltrate water using deep-rooted, native plants to help reduce erosion, stormwater pollution, and potential flooding. Cost-share opportunities are available to property owners to build rain gardens by visiting [OlatheKS.org](http://OlatheKS.org) and searching “Stormwater Cost Sharing.”

# Olathe **LINK**

P.O. Box 768, Olathe, Kansas 66051-0768

## Reader Feedback

Please send your comments to:

Olathe Link

P.O. Box 768

Olathe, KS 66051-0768

linkcomments@OlatheKS.org

913-971-8700

PRSR STD  
U.S. POSTAGE  
PAID  
Permit No. 323  
Olathe, KS

## Issues Affecting You

- Olathe Sets Standard for City Services . . . . 1
- Mayor's Message . . . . . 2
- Coming Soon to Lake Olathe . . . . . 3
- What's Being Built . . . . . 4
- 2019 Major Traffic Improvements . . . . . 5
- Olathe Earth News . . . . . 6-7

If you require this material in a black and white format, please contact the Olathe Human Relations manager, 913-971-8827.



### OlatheConnect

Look for information or submit a service request 24/7.

[OlatheKS.org/OlatheConnect](http://OlatheKS.org/OlatheConnect)



Receive Olathe news and updates by email or text message. Click on e-notification or the envelope icon at [OlatheKS.org](http://OlatheKS.org).



**SATURDAYS**  
April 20 to October 12

**WEDNESDAYS**  
May 1 to August 28

**TWO LOCATIONS**  
**Stagecoach Park**  
1205 E. Kansas City Rd.  
**Black Bob Park**  
14500 W. 151 St.

Operating from 7:30 a.m.  
until items are sold.

EASTER EGG HUNTS JOEY THE BUNNY  
 PHOTO BOOTH FOOD TRUCKS ACTIVITIES FOR ALL

# CELEBRATE OLATHE

FRIDAY, APRIL 19 | 5:30 - 7:30 P.M.  
 1205 E. KANSAS CITY RD.  
[OLATHEKS.ORG/CELEBRATEOLATHE](http://OLATHEKS.ORG/CELEBRATEOLATHE)