



CITY OF OLATHE NEWSLETTER

# Olathe LINK

Olathe Residents' Number One Source for City of Olathe Information—DirectionFinder®

EARLY AUTUMN 2018

Fourth Fridays, Downtown Olathe

## Olathe's 2019/2020 Budget Reflects Citizen Priorities

This summer, the Olathe City Council approves the 2019/2020 budget and five-year capital improvement plan to establish a citywide operational plan and move forward the City's strategy for infrastructure needs. City officials developed these policy documents based on citizen guidance on how the City's resources should be allocated.

As of this printing, the proposed 2019 General Fund budget is \$107,745,287 and the 2020 General Fund budget is \$113,074,326. The 2019/2020 budget includes a proposed one-quarter mill property tax reduction.



Public safety is supported in the 2019/2020 budget with additional School Resource Officer positions.

See Olathe's 2019/2020 Budget, continued on page 3

**New Interactive Map Shows What's Being Built in Olathe • Page 5**

## Community Launches Future Ready Planning



The City is working to prepare the community for the next 20-plus years with the Olathe 2040: Future Ready strategic plan. You may have already seen City Engagers at events this summer asking for community input about future life in Olathe.

In addition to community engagement during the next several months, a Strategic Planning Advisory Committee will consider high impact trends and identify opportunities for Olathe. The committee will consider community ideas, and develop a vision framework to present to the City Council for approval. Following the vision process, draft goals, measures, and targets will result in a draft strategic plan. The City Council will adopt the final strategic plan.



## How Do You Imagine Olathe in 2040?

Fast forward to the year 2040. How will our neighborhoods, jobs, infrastructure, schools, technology, and the way you play change? We've initiated the community-based strategic planning process to make the 20-plus year plan relevant to you.

See Olathe 2040, continued on page 3



Find additional Olathe news at [OlatheKS.org](http://OlatheKS.org). Click on NEWS.

### Inside This Issue

Mayor's Message .....	2	What's Being Built in Olathe .....	5
Olathe's 2019/2020 Budget .....	3	Olathe Earth News .....	6-7
Share Your Vision at <a href="http://OlatheKS.org/Olathe2040">OlatheKS.org/Olathe2040</a> .....	3	Autumn Events .....	8



## Mayor's Message

# Olathe Solid Waste Services Setting the Standard

The City of Olathe's Solid Waste Division is leading the way, providing customers outstanding, cost-effective services, ranging from trash and recycling collection to an innovative Product ReUse Program. For the past several years, customer satisfaction with Olathe's solid waste services has ranked among the top five percent in the nation, and 93 percent of residential customers are satisfied with our overall solid waste system. Focus groups and survey responses affirm that our commercial customers are also pleased with the quality of City services.

We are diverting more waste from the landfill than ever before, which helps keep solid waste rates stable. Last year, our customers diverted more than 45 percent of waste through recycling and yard waste collection. This is the highest diversion rate in Johnson County, and it exceeds the national rate of 34 percent. If you recycle, you can take credit for this achievement!

### Olathe Solid Waste Division Distinctions

#### Customer Satisfaction

for Overall Services  
Top Five Percent in the U.S.

#### Trash Day App

4.85 stars out of 5  
Outstanding Project



Solid Waste Association of North America

#### Olathe Public Service Award

for Customer Service

#### Excellence in Operations

Recycling, American Public Works Association

#### Kansas Solid Waste Hall of Fame

Member – Solid Waste manager

We're proud that Olathe's Household Hazardous Waste (HHW) Program and Product ReUse Center are recognized nationally as a best practice. The Solid Waste Division supports recycling of hazardous waste products with customer HHW drop-off appointments and HHW drop-off events on the second Saturday of each month. Reusable products from our Product ReUse shelves are offered free to residents and non-profit groups.

Isn't it good to know that your old cell phone, printer, or television can also be recycled? We make it convenient to recycle small electronics by calling Customer Service at 913-971-9311 for an appointment.

Premier customer service is at the heart of our Solid Waste operations. Olathe employees are proud to go above and beyond in serving you, such as picking up tons of debris following storms that cause significant tree damage. They go the extra mile because they truly care about our community and the people they serve.

Looking ahead, we must evaluate how to continue working more efficiently, while addressing future needs. The City recently completed a Solid Waste Master Plan to assist in identifying needs and services we may need to optimize or change. This is critical in light of changing regulations and current and emerging solid waste issues here and around the world. See page seven to learn more about Olathe's Solid Waste Master Plan.



Olathe Solid Waste Division employees

Thank you for helping us make Olathe a model community for solid waste management. Working together, we'll carry on our tradition of excellence, offering the highest-quality solid waste services and preparing our city for the future.

Sincerely,

Michael Copeland  
Mayor



## Olathe Is Safe

The budget supports Olathe as a safe city, including public safety investments like:

- five school resource officers (SROs) and one school resource police sergeant to place SROs in all public middle schools and high schools
- two police detectives and one sergeant detective
- four firefighters will be added in both 2019 and 2020 to build firefighter capacity in preparation for opening a new fire station in west Olathe in 2021
- a Fire Training Center.

## Olathe Is Moving

Residents' desire for well-maintained streets is addressed in the budget with more funding for the annual street maintenance program. Improvements to traffic flow and additional maintenance are included with 18 major street improvement projects. Among those improvements:

### Other Street Projects

- K-7 Highway, Santa Fe to Old 56 Highway
- Lone Elm Road, Old 56 Highway to 151st Street
- Design of I-35 & 119th Street Interchange improvements.

### Intersections

- Santa Fe and Ridgeview
- 119th Street and Pflumm
- 119th Street and Black Bob
- 151st Street and Mur-Len
- 159th Street and Pflumm.

## Olathe Is Active

Leveraging park sales tax funding, investments to advance an active community include Lake Olathe's redevelopment, the new Cedar Creek Streamway Trail, and Lone Elm Park improvements. Resources support the 2019 opening of the new Indian Creek Library's programs to promote creativity, innovation, and lifelong learning.

## Olathe Is Transparent

Budget documents, the capital improvement plan, and a variety of other financial and performance documents are available at [OlatheKS.org](http://OlatheKS.org). Questions and comments can be directed to [budgetcomments@olatheks.org](mailto:budgetcomments@olatheks.org) or 913-971-8683.

### Olathe 2040 from page 1

### Visit [OlatheKS.org/Olathe2040](http://OlatheKS.org/Olathe2040) to:

- Share your vision about areas such as transportation, infrastructure, neighborhoods, and more.
- Connect at an event where you can share your vision with the Engager Team. Nearly 100 City employees are involved and helping with community outreach for Olathe 2040.
- Be informed throughout the Olathe 2040: Future Ready planning by signing up for email updates. Or, use the hashtag #Olathe2040 to share your dreams for Olathe's future.
- Upload photos or videos of your ideas or those from other communities.

Questions about Olathe 2040: Future Ready may be directed to [CommunicationsStaff@OlatheKS.org](mailto:CommunicationsStaff@OlatheKS.org)

## Important City Phone Numbers

Regular Business Hours:

Monday - Friday, 8 a.m. - 5 p.m.

Except for **Emergency 911**, and unless otherwise noted

**EMERGENCY** ..... 911

**Emergency TDD/TTY Calls** ..... 911

**GENERAL INFORMATION (TDD/Voice)** .... 971-8600

### CUSTOMER SERVICE

1385 S. Robinson ..... 971-9311

Billing, Trash, Water & Sewer

### FIRE ADMINISTRATION

1225 S. Hamilton Circle (Non-Emergency) .... 971-7900

Printed on recyclable paper. 



### [OlatheKS.org/ServicesDirectory](http://OlatheKS.org/ServicesDirectory)

#### OLATHE PUBLIC LIBRARY

201 E. Park St. .... 971-6850

13511 S. Mur-Len Rd. .... 971-6835

#### PARKS AND RECREATION DEPARTMENT

##### OLATHE COMMUNITY CENTER

1205 E. Kansas City Rd. (TDD/Voice) ... 971-8563

#### POLICE DEPARTMENT

501 E. 56 Highway ..... 971-7500

#### HUMAN RESOURCES

100 E. Santa Fe ..... 971-8735

## Olathe City Council

**Larry Campbell**  
Ward 1  
913-488-7278  
[lcampbell@olatheks.org](mailto:lcampbell@olatheks.org)

**Michael Copeland**  
Mayor  
913-971-8500  
(City office)  
[mcpeland@olatheks.org](mailto:mcpeland@olatheks.org)

**Jim Randall**  
Ward 2  
and Mayor Pro Tem  
913-424-3999  
[jrandall@olatheks.org](mailto:jrandall@olatheks.org)

**John Bacon**  
At Large  
913-269-6305  
[jbacon@olatheks.org](mailto:jbacon@olatheks.org)

**Wes McCoy**  
Ward 3  
913-269-1035  
[rwmccoy@olatheks.org](mailto:rwmccoy@olatheks.org)

**Karin Brownlee**  
At Large  
913-484-3255  
[kbrownlee@olatheks.org](mailto:kbrownlee@olatheks.org)

**Marge Vogt**  
Ward 4  
913-269-0625  
[mvogt@olatheks.org](mailto:mvogt@olatheks.org)

CONNECT WITH US



Apps available on the App Store and Google Play

**OLATHE CONNECT TrashDay**

The Olathe Police Department  
and Citizens' Police Advisory Council

PROUDLY PRESENT

## COMMUNITY CONVERSATIONS

THURSDAY, SEPTEMBER 13, 7 - 8:30 P.M.

An ongoing series of conversations between  
the community, the Chief of Police and Command  
Staff of the Olathe Police Department

**OLATHE COMMUNITY CENTER**  
1205 E. Kansas City Rd.

Please contact Major Dave Schroeder at 913-971-7775  
to request any accommodations or interpreter services.

OLATHEKS.ORG/POLICE



## New Renewal Dates for City Alarm Program

The City of Olathe partners with alarm users each year to prevent false alarms, which can be costly and dangerous, divert public safety resources and delay response to emergencies.

**Starting January 1, 2019, alarm renewal dates will change to the alarm user's original registration month** instead of the end of each calendar year, which has been the City's schedule in the past. The renewal process will remain the same: Look for your renewal notice in the mail at least 30 days before your renewal is due and complete it at <https://CryWolf.OlatheKS.org> or follow the letter's instructions for paper registration. If you have questions, please contact Alarm Coordinator Tammy Foxworthy at 913-971-8530 or [falsealarm@olatheks.org](mailto:falsealarm@olatheks.org).

Note: Both monitored and unmonitored alarm systems, intended to summon a public safety response, require annual registration. Without it, your system is considered unregistered, which can result in penalties. Visit [OlatheKS.org/Government/City-Clerk/Alarm-System-Registration](https://OlatheKS.org/Government/City-Clerk/Alarm-System-Registration) to view the alarm ordinance and information on registration, renewal, and false alarm prevention.

## Drivers Should Use Extra Caution Around Schools

**Keep our students safe as they  
travel to and from school.**

### Drivers should:

- Stop immediately when a school bus has the stop sign extended from the driver's window. Stop no matter what direction you are traveling.
- Watch for children entering the street from behind buses or running to catch the bus.
- Watch your speed when you are entering school zones.
- Follow the school's drop off and pick up procedures to ensure safety for pedestrians and drivers.
- Watch your children until they are safely on school grounds.
- Drive slowly when approaching children who are riding bicycles and walking near the street.
- Practice making school zones "no phone" zones.

## Yield for Pedestrians When Beacons Flash

When **drivers** see the flashing yellow beacons, they should yield to the pedestrian. The flashing yellow lets drivers know a pedestrian is waiting to cross the street. Always yield when there is a pedestrian in the crosswalk.



**Pedestrians** should use the pedestrian pushbutton to activate the flashing lights. Look for drivers to yield before crossing the street. While crossing the street, pedestrians should stay alert and continue to watch for traffic approaching from both sides. Be alert to the most recent beacon installations in the city at school and trail crossings.

### School Crossings

- Ridgeview and Elm for Ridgeview Elementary School – installed last year
- 133rd Street near Hagan Street for California Trail Middle School
- East Orlean Drive near Meadow Lane for Heritage Elementary School

### Trail Crossings

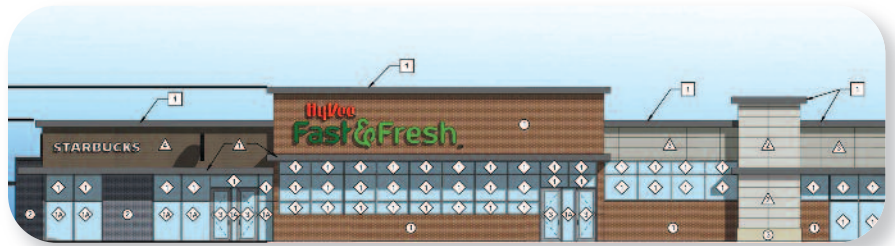
- 159th Street between Avalon and Lennox for Indian Creek Trail
- Ridgeview between 163rd and 164th Streets for Indian Creek Trail
- NEW – Woodland and 107th Terrace for Meadow Lane Trail



# What's Being Built in Olathe

## Hy-Vee Fast and Fresh Market

The Planning Commission approved a new convenience store and gas station for a pad site in Alden Center on 135th Street near Greenwood Street. The convenience store consists of a market for Hy-Vee and an attached Starbucks with a drive-through lane.



## Village Cooperative

A new senior housing development is currently pending final site development plan approval at the northwest corner of W. 133rd and Greenwood Streets, immediately west of Regency Place Elementary School. The senior housing will be a cooperative and will have 49 units.



## West Market Shops

A new Starbucks location is planned for West Market Shops near the southwest corner of Santa Fe Street and Parker Road. Starbucks will replace the site currently occupied by the BP gas station. Additionally, a Chipotle restaurant and other future tenants are planned for a remodeled northern portion of the shopping center. The property will also receive updates to the parking lot including new lighting and landscaping.



**NEW** mapping allows you to see more of what's being built in Olathe.

**View the new interactive development map:**

**[OlatheKS.org/WhatsBeingBuilt](http://OlatheKS.org/WhatsBeingBuilt)**

It shows locations for current permitted projects by clicking on the map.

You can also see future projects in the development planning process. Select this icon for the map legend.



*The Olathe Police Department found new ways to reach out to the community this summer. Kickin' it with the Cops included kickball, mini golf, fishing, and visits to local pools. Chillin' with the Cops, featuring sno cones, rounded out the fun activities during the summer.*

## Fall Is a Good Time for Tree Maintenance

### **Please remember property owner responsibilities**

- Severely damaged, dead or diseased trees must be removed from properties.
- Limbs hanging lower than 13.5 feet over a street or 10 feet over a sidewalk must be trimmed.

**Olathe Municipal Code Chapter 12.16.020**



# Earth News

from the City of Olathe, Kansas

We are pleased to serve you  
at Olathe Customer Service

Monday – Friday, 8 a.m. to 5 p.m.  
Call 913-971-9311

Have a service request after hours?  
Contact us at OlatheConnect 24/7.  
[OlatheKS.org/OlatheConnect](http://OlatheKS.org/OlatheConnect)



## Recycle Glass

You can recycle glass at Ripple Recycling bins located throughout Olathe. Visit [RippleGlass.com](http://RippleGlass.com) to find the nearest recycling location.

Glass accepted for recycling:

- Glass food and beverage containers (all colors, labels can stay on)
- Drinking vessels (pint, wine, mason jars)
- Candle jars (leftover wax okay)
- Cosmetic bottles/jars
- Windows, shower doors, table tops (frames/hardware removed).



Big Cleanup from  
Early June Storm

Olathe Customer Service fielded:

**2,000 calls** over one week

Public Works crews worked:

- **12** hour days
- **6** days a week for **3** weeks
- **7,425 cubic yards** of storm debris was collected out of **1,338 pick up** requests

## Determining Pavement Conditions for Maintenance



This summer, Stantec Inc. collected pavement condition information on nearly 395 lanes miles of Olathe arterial streets.

The Stantec vehicle is equipped to measure pavement deterioration information, which in turn is incorporated into the Public Works Department's pavement data. This provides an overall Pavement Condition Index for streets to determine which streets receive priority for maintenance. Every street segment in the city is inspected at least once every three years.



# Solid Waste Master Plan

## Supporting Clean and Healthy Neighborhoods into the Future

The City of Olathe recently completed a Solid Waste Master Plan to prepare for future services and maintain healthy neighborhoods. Olathe's increasing population, homes, and commercial growth will require additional resources, services, and infrastructure to continue the current level of solid waste services.

An Olathe Waste Planning Team forecasted future waste generation and assessed the capacity of the existing waste infrastructure to manage future waste until 2064. A long-term approach is appropriate since some solid waste facilities, such as landfills, can require several decades to develop in an urban area such as Olathe and Johnson County.

**In 2018, two Master Plan recommendations will be implemented:**

- changes at the recycling drop-off centers
- expansion at the current composting facility.

### Look for Changes at Recycling Drop-off Centers

**Beginning this fall, All MIXED PAPER, ALUMINUM and TIN CAN bins will be moved to the Olathe Composting Facility, 1100 N. Hedge Lane.**

The Composting Facility is open Monday through Saturday, 8 a.m. – 4 p.m.

The downtown recycling center will be closed because of courthouse construction and other proposed development downtown. It will be consolidated with the west Olathe drop-off center at Wal-Mart, less than a mile away.

This change is the result of continued contamination of items for recycling with items that are not accepted. In addition, open dumping continues to be a challenge at the multi-material drop-off centers.

**Cardboard and glass will still be accepted** at the drop-off centers (west Olathe Wal-Mart, and east Olathe Wal-Mart).



### More Space for Yard Waste

Yard waste diversion from the landfill consistently accounts for at least 65 percent of the total waste diversion efforts. The combined curbside collection and drop-off programs have captured more than 90 percent of the City's yard waste for processing and reuse in the past two years. Yard waste collected curbside is largely grass and leaves and is processed into compost. The yard waste Olathe residents bring to the Compost Facility typically consists of larger limbs and branches, which the City grinds into mulch.

Work is underway to provide more capacity for yard waste processing at the existing Composting Facility, 1100 N. Hedge Lane. Two compost pads will be constructed to serve the yard waste diversion program.





# OlatheLINK

P.O. Box 768, Olathe, Kansas 66051-0768

## Reader Feedback

Please send your comments to:

Olathe Link  
P.O. Box 768

Olathe, KS 66051-0768

linkcomments@OlatheKS.org

913-971-8700

PRSR STD  
U.S. POSTAGE  
PAID  
Permit No. 323  
Olathe, KS

## Issues Affecting You

- Community Launches Olathe 2040..... 1
- Mayor's Message..... 2
- OlatheKS.org/Olathe2040 ..... 3
- Back to School Safety..... 4
- What's Being Built in Olathe ..... 5
- Olathe Earth News ..... 6-7

If you require this material in a black and white format, please contact the Olathe Human Relations manager, 913-971-8827.



### OlatheConnect

Look for information or submit a service request 24/7.

[OlatheKS.org/OlatheConnect](http://OlatheKS.org/OlatheConnect)



Receive Olathe news and updates by email or text message. Click on e-notification or the envelope icon at [OlatheKS.org](http://OlatheKS.org).

**OLATHE**  
**SPOOKTOBER**  
OCT. 26 & 27

OCTOBER 26 | 6-8:30 PM  
OLATHE COMMUNITY CENTER  
1205 E. KANSAS CITY RD.

**CELEBRATE**  
**OLATHE**

**MAHAFFIE**  
**TRICK OR TREAT**  
**OFF THE STREET**

OCTOBER 27 | 3-6 PM  
MAHAFFIE STAGECOACH STOP  
1200 E. KANSAS CITY RD.

OCTOBER 27 | 6:30-8 PM  
OLATHE COMMUNITY CENTER  
1205 E. KANSAS CITY RD.

**HAUNTED**  
**SWAMP**

FOR MORE INFORMATION VISIT [OLATHEKS.ORG/SPOOKTOBER](http://OLATHEKS.ORG/SPOOKTOBER)

**MAHAFFIE**  
STAGECOACH STOP & FARM HISTORIC SITE  
OLATHE, KANSAS  
EST. 1858

**Wild West Days**

**ACTIVITIES FOR THE WHOLE FAMILY!**

★ ★ ★ ★ ★ ★ ★ ★

**Olathe Lives!**

**MAIN EVENT**

**SEPTEMBER**

**Sept. 21**  
The Gibson Brothers  
with Kelly Hunt

**22** & **23**  
10am-4pm      11am-4pm

★ ★ ★ ★ ★ ★ ★ ★

**\$5 FAMILY FRIENDLY ADMISSION!**  
ages 5+  
Some activities have an additional fee

Free parking and free shuttle bus from Olathe North High School

1200 E. Kansas City Rd. ★ Olathe, KS 66061 ★ 913.971.5111 ★ [mahaffie.org](http://mahaffie.org)